

23 THINGS TO SEW



EXCLUSIVE TICKET OFFER

Simply Sewing

FRESH IDEAS WITH FABRIC

ISSUE THIRTY TWO



9 KITCHEN ACCESSORIES
SEW FOR YOUR HOME

THE MIA DRESS + TOP
STATEMENT SLEEVES SET
IN SIZES 6-20



UPDATE YOUR WARDROBE!



+
SHIRT DRESS
BABY KIMONO
T-SHIRT TOTE

GET THE LOOK

High street fashion trends to sew at home

HOW TO: Pistil stitch • Shirt refashion • Maternity hacks • Sew with oilcloth • Lace inserts

Amazing Summer Deals

UK Dealer List

Innov-is 55FE

Sewing machine

- 81 built in stitches plus lettering
- Back-lit LCD screen with digital stitch length and width controls
- Advanced automatic needle threading system
- 10 styles of 1-step automatic buttonhole
- Slide type speed control
- Combine & save stitch patterns
- Includes 12 accessory feet
- Hard Case



£449

FREE
Creative quilt
Pack worth
£149.99

Innov-is 955

Sewing and embroidery machine

- 129 utility & decorative stitches
- 70 embroidery designs, plus 126 on CD & 100 on USB Stick
- 6 embroidery & 3 sewing fonts
- LCD touch screen
- 100mm x 100mm embroidery area
- Advanced automatic needle threader
- Quick set drop in bobbin
- Drop feed
- 3-year warranty



£599
usual price
£799

SAVE
£200

Innov-is 1100

8.3" Long arm sewing and quilting machine

- 10 Styles of automatic 1-step button holes
- 140 built-in stitches excluding lettering
- 5 Styles of lettering
- SFDS – Square Feed Drive System
- Combine and memorise stitches
- Automatic thread cutter



£749

FREE
Creative Quilt
Kit worth
£149.99

OR

FREE
Creative
Sewing Pack
& Couture Kit
worth
£144.98

Innov-is V3

Embroidery machine

- Large 300mm x 180mm embroidery area (Increased to 300mm x 200mm with Premium pack 1)
- 17 fonts including Cyrillic & Japanese
- 227 built-in embroidery designs
- 11¼" Long arm
- 3-year warranty



£1,999

FREE
Premium
Pack 1 and LED
embroidery foot
worth
£297.98

Scotland	
David Drummond Edinburgh EH12 5HD	01315 397 766
Karelia House Ltd Aberfeldy PH15 2LS	01887 822 027
Pemberton's Sewing Machines Stirling FK8 1HA	01786 462 993
The Sewing Machine Shop Fochabers IV32 7DU	01343 823 961
North East	
The Fat Quarters Newcastle upon Tyne NE17 7TN	01207 565 728
Sewing Machine Sales Whitley Bay NE26 2SY	0191 2525 825
Tullys Sewing Machines Sunderland SR1 3JG	0191 5657 995
UK Sewing Machines Darlington DL3 7JY	01325 463 630
North West	
Bamber Sewing Machines Ltd Eccles M30 7HY	0161 707 7786
Cumbria Sewing & Craft Centre Barrow LA141DS	01229 823 714
Etty Lilly Bolton Le Sands LA5 8DB	01524 734 713
Fabrics at Fleetwood Fleetwood FY7 6DU	01253 870 470
Hobkirk's Sewing Machines Ltd Blackburn BB2 2AJ	01254 693 555
Jaycotts Sewing Machines Chester CH1 4LT	01244 394 099
Lord's Sew Knit Centre Accrington BB5 3DE	01254 389 171
M&S Sewing Machines Heywood OL10 4NN	01706 366 943
Superior Sewing Centre Carlisle CA3 8PW	01228 599 880
Temptations Bentham LA2 7HQ	01524 261 868
Yorkshire & The Humber	
A61 Woodseats Sewing Machines Ltd Sheffield S8 0RY	0114 255 2822
Fabric Mouse Richmond DL10 7SN	01748 811593
Gillies Fabrics York YO1 8SW	01904 626 244
Grimby Sewing & Knitting Grimby DN32 9DR	01472 343 921
Sewing Machines and Crafts Keighley BD21 1AD	0153 560 9466
Midlands	
Brewers Sewing Machines Wolverhampton WV2 3AF	01902 458 885
Couling Sewing Machines Lincoln LN5 8AW	01522 521 841
Crafty Sew & So Leicester LE1 5DN	0116 319 6930
Creative Hands 2 Worcester WR1 2LU	01905 249 40
DC Nutt Sewing Machines Walsall WS3 3SS	01922 497 603
GS UK Ltd Nottingham NG2 3DE	0115 844 8000
Grain Sewing Machines Ltd Nottingham NG6 8UY	0115 927 1155
L & M Nutt Sutton Coldfield B73 5BS	0121 373 5497
The Lorna Knight Sewing Academy Leek ST13 7NX	01538 371 682
Sewing Machine Centre Shrewsbury SY1 1XJ	01743 343 902
Specialist Crafts Limited Leicester LE4 9HQ	0116 274 4730
East Anglia	
Bedford Sew & Knit Limited Bedford MK41 7LE	01234 217 096
Beccles Sewing Machines Beccles NR34 9TB	01502 714 234
Franklins Group Limited Chelmsford CM2 0LG	01245 346 300
Franklins Group Limited Colchester CO2 7DU	01206 563 955
Franklins Group Limited Ipswich IP1 3EL	01473 221 188
Sewing Machine World Kings Lynn PE30 5DD	01553 773 362
Stitch X Stitch Stowmarket IP14 1HH	01449 257 070
Wales	
Cliffords Sewing Machines Swansea SA1 3JY	01792 655 928
J&B Sewing Machine Co Ltd Cardiff CF11 8AA	02922 402 418
J&B Sewing Machine Co Ltd Newport NP19 4SY	01633 284 646
Sewing Innovations Techsoft UK Ltd LL18 5TQ	01745 586 845
Sewing Machine Direct Wrexham LL12 0PJ	08006 226 224
South East	
Brighton Sewing Centre Brighton BN1 1YD	01273 621 653
British Sewing Centre Boreham Wood WD6 1FJ	0208 236 1520
C & A Supply Co Ltd Cranleigh GU6 8NE	01483 267 777
CCB Sewing Machines Rochester ME1 1HS	01634 841 597
Dowlings Wickford SS11 8YJ	01268 570 248
Eastleigh Sewing Centre Eastleigh SO50 5LD	02380 650 808
Emporia Fabric & Craft Ashford TN24 8RY	01233 612 278
GTS Sewing Machines Banbury OX16 9PQ	01295 701 384
Lewisham & Deptford S/Mcs Ltd London SE8 3NT	02086 921 077
Maidstone Sewing Centre Maidstone ME14 1ED	01622 670 254
Regent Home of Sewing Ilford IG1 2AG	0208 4780 669
Rona Sewing Machines Waltham Cross EN8 7AP	01992 640 250
Sew Devine Reading RG6 1JQ	01189 268 664
The Sewing Centre London SW11 3BP	0207 228 3022
The Sewing Shop Canterbury CT1 2HX	01227 457 723
Suoco UK Portsmouth PO3 5BZ	02392 697 621
Stitched By You Alton GU34 1BN	01420 544033
Tysew Southall UB1 3AF	02085 741 750
Wimbledon Sewing Machines Co. Ltd SW17 7AA	0208 767 0036
Woking Sewing & K/M Centre Woking KT15 3NY	01932 352 958
The World of Sewing Orpington BR6 75Q	01689 638 638
The World of Sewing Tunbridge Wells TN1 2QP	01892 533 188
South West	
And Sew to Knit Taunton TA1 1NZ	07547 006 618
Caffle Crafts Weston Super Mare BS24 6SE	01934 838 327
D & S Sewing Machines Newton Abbot TQ12 2BS	01626 369 840
Exeter Sewing Machine Company Exeter EX1 2LD	01392 275 660
Franklins Group Limited Salisbury SP2 7SU	01722 554 466
Sewcraft Swindon SN1 1SD	01793 536 778
The Sewing Studio Redruth TR15 2DB	01209 216 942
White Orchid Corfe Mullen BH21 3UX	01202 886 001
Northern Ireland	
Sew N Knit Belfast BT14 1AB	028 9045 6015

Offers valid from 1st June to 31st July 2017



brothersewing.co.uk



Simply Sewing

FRESH IDEAS WITH FABRIC

We love sewing (there's no doubt about that), but sometimes the best part isn't the process of making the item, but enjoying the compliments that come flooding in afterwards. Whether it's a friend that comments on your handmade kitchen accessories or a work colleague admiring your new blouse, we *love it* when our handiwork inspires others to start sewing too. Share your latest makes on Facebook @simplysewingmag – we'd love to see what you've been up to!

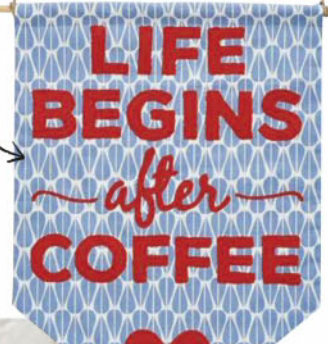


Simply Sewing

FRESH IDEAS WITH FABRIC

ISSUE THIRTY TWO
CONTENTS

Make a kitchen banner, p20



Sew The Mia Set, page 34



20
PROJECTS
TO SEW
FOR YOUR KITCHEN



GREAT PATTERNS FOR YOU

HOW TO...

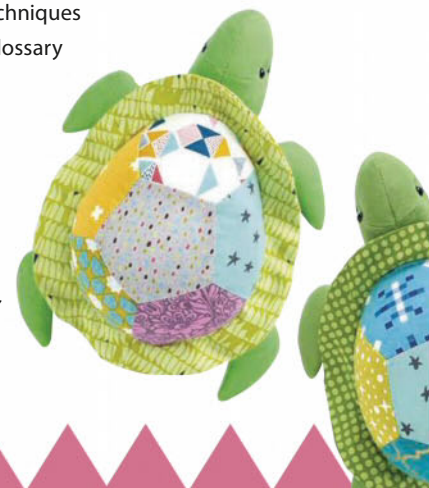
56 FIND OUT ABOUT THE CREATIVE DUO BEHIND MADEIT PATTERNS!

- 20 RETRO KITCHEN ACCESSORIES
- 34 PATTERN: THE MIA SET
- 40 MATERNITY HACK: JERSEY DRESS
- 45 QUICK FIX: POM POM SCARF
- 46 PATTERN: THE DROP SET
- 51 TRANSFORM IT: SHIRT DRESS
- 53 RECYCLED T-SHIRT TOTE BAG
- 60 PATTERNLESS: BEACH COVER-UP
- 65 DENIM UPCYCLE: TECH POUCH
- 72 BABY KIMONO AND MITTENS
- 75 FAST FAT QUARTER: KID'S BAG
- 77 TOY: PAIR OF TURTLES
- 87 OILCLOTH TABLE COVER

- 67 WORKSHOP: SEWING WITH LACE
Learn the technique and find out how to insert a lace panel into a blouse
- 85 EMBROIDERY: PISTIL STITCH
Make a decorated pincushion
- 91 SEWING GUIDE
Tips, techniques and a glossary



Sew a pair of turtle toys, p77





40



72



85



45

WIN £299 WORTH OF TEFAL PRODUCTS!
 Enter today to win a steam iron, steam generator and hand-held steamer from Tefal, p17

GET THE LOOK...

Wow, what a month. This issue I've gone all-out to curate you a fab selection of looks inspired by high street trends. **The Drop Set** (p46) from Madeit Patterns is certain to become your go-to for comfort with its stylish asymmetric hem. **The Mia Set** (p34) ticks all the boxes with its statement sleeves (choose from fluted or ruffled), and our off-the-shoulder **shirt dress transformation** (p51) is a quick way for you to try out the bare-shoulder trend. Enjoy!



Charlie Moorby, Editor

Charlie

PS: SAVE 72% ON SHOP PRICE when you subscribe (see p18)

GOOD READS & IDEAS

- 9 PINBOARD: Ideas, events, new fabric
- 15 SEWING QUARTER: FREE SCISSORS
- 17 WIN: STEAMERS WORTH £299
- 38 COLUMN: LISA COMFORT
- 56 PROFILE: MADEIT PATTERNS
- 80 FEATURE: SEWING BEE LIVE!
- 97 COMING UP NEXT MONTH
- 98 MY FAVOURITE THING



GREAT SUBS OFFERS! P18
 GET A HUGE 72% OFF WHEN YOU SUBSCRIBE THIS MONTH...



51



60

* FREE PATTERNS ONLY AVAILABLE ON UK NEWSSTAND

CONTRIBUTORS

A huge round of applause for this issue's stars...



"Join the recycling movement at www.trashmztees.com"

JENELLE MONTILONE

Jenelle Montilone is a recycling and repurposing revolutionary. Jenelle believes that she can make a difference, and she knows that you can too! To get started, find out how to make old T-shirts into shopper bags with her tutorial on page 53.



"See more of my work at www.cafenohut.blogspot.com"

AYDA ALGIN

Ayda is an engineer who lives in Istanbul. Her blog, CafenoHut, is where she shares her craft, baking and interior ideas. Her first sewing book, *Made for Baby: Cute Sewn Gifts* has just been released. Sew her baby kimono on page 72.



"I set myself a challenge to make all my girl's new clothes!"

OLU FALOLA

Olu worked as a graphic designer in advertising for 15 years but gave it up to spend more time with her daughters. She met Anna (below) through blogging and now they're partners at Madeit Patterns. Read more on page 56.



"I've finally fulfilled my dream of working for myself!"

ANNA BRUCE

Anna spent 15 years working as Creative Pattern Cutter in the UK for several brands and retailers. She launched Madeit Patterns in 2014 when she realised her dream of "doing a job I love." Find the Madeit Drop Dress and Top pattern on page 46.

OTHER CONTRIBUTORS

Jo Carter, Samantha Claridge, Lisa Comfort, Rumana Lasker Dawood, Jessica Entwistle, Debbie Von Grabler-Crozier, Mollie Johanson, Jennie Jones, Portia Lawrie, Zoë Patching, R&B Designs
Special thanks to: Annelise Brant, Leila D'Aguilar, Jenny Forsyth, Victoria Guerrero

WWW.SIMPLYSEWINGMAG.COM

[facebook.com/simplysewingmagazine](https://www.facebook.com/simplysewingmagazine) twitter.com/SimplySewing [pinterest.com/simplysewingmag](https://www.pinterest.com/simplysewingmag) [instagram.com/simplysewingmag](https://www.instagram.com/simplysewingmag)

COMPETITION RULES

By taking part in one of our Competitions, you agree to be bound by these Competition Rules. Late or incomplete entries will be disqualified. Proof of posting (if relevant) shall not be deemed proof of delivery. Entries must be submitted by an individual (not via any agency or similar) and, unless otherwise stated, are limited to one per household. The Company reserves the right in its sole discretion to substitute any prize with cash or a prize of comparable value. Unless otherwise stated, the Competition is open to all GB residents of 18 years and over, except employees of Immediate Media Company and any party involved in the competition or their households. By entering a Competition you give permission to use your name, likeness and personal information in connection with the Competition and for promotional purposes. All entries will become the property of the Company upon receipt and will not be returned. You warrant that the Competition entry is entirely your own work and not copied or adapted from any other source. If you are a winner, you may have to provide additional information. Details of winners will be available on request within three months of the closing date. If you are a winner, receipt by you of any prize is conditional upon you complying with (among other things) the Competition Rules. You acknowledge and agree that neither the Company nor any associated third parties shall have any liability to you in connection with your use and/or possession of your prize. Competition open 13 July - 17 August 2017

Simply
Sewing
FRESH IDEAS WITH FABRIC

EDITORIAL

EDITOR Charlie Moorby
ART EDITOR Lisa Jones
TECHNICAL EDITOR Rebecca Reid
PRODUCTION EDITOR Michelle Grady
DIGITAL EDITOR Zoe Williams
FEATURES WRITER Judy Darley
PHOTOGRAPHER Philip Sowels

ADVERTISING

Call 0117 300 8206
SENIOR ADVERTISING MANAGER Penny Stokes
SENIOR SALES EXECUTIVE Tiffany Jackson
CLIENT PARTNERSHIP MANAGER Beckie Pring

MARKETING & CIRCULATION

SUBSCRIPTIONS DIRECTOR Jacky Perales-Morris
DIRECT MARKETING EXECUTIVE Lily Nguyen
HEAD OF NEWSTRADE MARKETING Natalie Shearer
NEWSTRADE MARKETING MANAGER Janine Smith

BUYING

Paul Torre, Karen Flannigan, Corinne Mellerup

PRODUCTION

JUNIOR PRODUCTION COORDINATOR Lily Owens-Crossman
PRODUCTION MANAGER Sian Rodgers / Emma McGuinness
PRODUCTION DIRECTOR Sarah Powell

LICENSING

DIRECTOR OF INTERNATIONAL LICENSING
& SYNDICATION MANAGER
Tim Hudson tim.hudson@immediate.co.uk
INTERNATIONAL PARTNERS MANAGER
Anna Brown anna.brown@immediate.co.uk

PUBLISHING

PUBLISHER Liz Taylor
CHIEF EXECUTIVE OFFICER Tom Bureau
MANAGING DIRECTOR, BRISTOL Andy Marshall

DISTRIBUTION

FRONTLINE Call +44 (0)1733 55161

PRINTED IN THE UK

BY WILLIAM GIBBONS

NEED TO GET IN TOUCH?

EDITORIAL TEAM
simplysewing@immediate.co.uk

SUBSCRIPTIONS TEAM
simplysewing@servicehelpline.co.uk
0844 844 0386

NEXT ISSUE ON SALE

THURSDAY 10TH AUGUST 2017

No gift included? Ask your newsagent.
Covergift may be unavailable overseas.

**IMMEDIATE
MEDIA** ^{CO}

Immediate Media Company Bristol Limited (company number 05715415) is registered in England and Wales. The registered office of Immediate Media Company Bristol Limited is at Vineyard House, 44 Brook Green, London W6 7BT. All information contained in this magazine is for information only and is, as far as we are aware, correct at the time of going to press. Immediate Media Company Bristol Limited cannot accept any responsibility for errors or inaccuracies in such information. Readers are advised to contact manufacturers and retailers directly with regard to the price of products/services referred to in this magazine. If you submit unsolicited material to us, you automatically grant Immediate Media Company Bristol Limited a licence to publish your submission in whole or in part in all editions of the magazine, including licensed editions worldwide and in any physical or digital format throughout the world. Any material you submit is sent at your risk. Although every care is taken, neither Immediate Media Company Bristol Limited nor its employees agents or subcontractors shall be liable for loss or damage.



When you have finished with this magazine please recycle it.





Introducing the Fold Away Petite - Dunster Edition
small but perfectly formed! With a small footprint
when closed and a folding work table there is a
spacious work area and plenty of storage.

fold away Petite

Dunster Edition



- § Folding desk offering a generous work space
- § Choice of storage racks to keep supplies
- § Cable access to enable integrated power
- § Optional built in lighting pack

Regular Price £995
(excluding delivery and lighting kit)

Magazine Offer
£850 (SAVE £145)

Mainland UK delivery £35 extra
Optional lighting kit £50 extra
Offer Coupon - DUN715



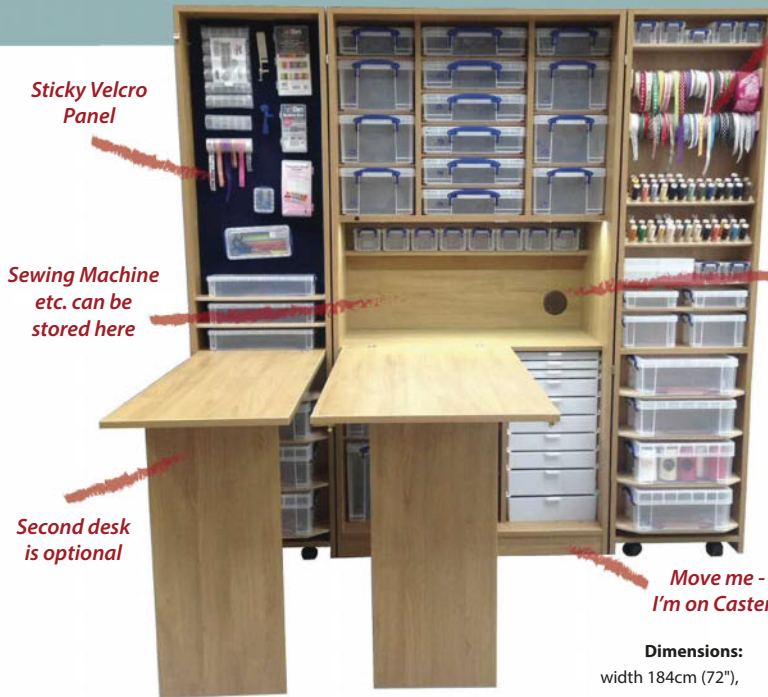
Unit pictured in Vanilla finish

*Specially designed with
the quilter in mind*

Choose options
to suit you

fold away Deluxe

Watersmeet Edition



Sticky Velcro Panel

Sewing Machine etc. can be stored here

Second desk is optional

Add Power - Cable Access here

Move me - I'm on Casters!

Dimensions:
width 184cm (72"),
depth 50cm (20")

with desk folded up, depth 150cm (59")
with desk(s) in use, height 183cm (72")

Unit pictured in Oak finish

Finished Crafting...
Then just Fold Away to a unit which is barely larger than a standard double wardrobe

Fold Away Deluxe - Watersmeet
Regular Price £1495
(excluding delivery and lighting kit)

Magazine Offer
£1195 (SAVE £300)

Mainland UK delivery £50 extra
Optional lighting kit £50 extra
Offer Coupon - WM715



width 92cm (36"),
depth 65cm (25 1/2"),
height 183cm (72")

Ribbons

Threads

Lighting

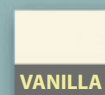


Please note all furniture items are supplied self assembly - assembly can be arranged please call for further details and charges

www.storage4crafts.co.uk
mail@storage4crafts.co.uk

Call us free
0800 048 8606

Offers expire end of month following magazine publication
(eg. Jan Issue expires end of Feb)



THE GREAT
BRITISH

LIVE 21-24 SEPTEMBER 2017,
EXCEL LONDON

SEWING BEE

THE UK'S LARGEST
NEW DRESSMAKING
& SEWING EVENT

£1.50 off
tickets*.
Use code:
SMD



- ◇ All your favourites from the TV programme
- ◇ See the Sewing Bee judges in the Super Theatre
- ◇ 100s of workshops for all levels of ability

- ◇ Shopping ◇ Fashion catwalk
- ◇ Great British Sewing Bee fashion gallery
- ◇ Make your own ◇ Vintage garments

21-24 September 2017, EXCEL LONDON, UK
www.thegreatbritishsewingbeelive.com



SHOW SUPPORTERS



VOGUE PATTERNS

*£1.50 off adult, OAP and student tickets only.

PINBOARD

IDEAS ♡ INSPIRATION ♡ ACCESSORIES ♡ WEBSITES ♡ EVENTS ♡ STUFF



Photo: www.louisantoinette.co.uk

WONDER WOMAN

The summer patterns from indie French label Louis Antoinette have us saying ooh-la-la! Titled Heroines, the collection features hero garments to rescue you from those I-don't-know-what-to-wear days, available as patterns and kits. Styles include a classic shirt with a cut-out detail and a 30s-inspired drop-waist dress. We've got our eye on the Simone shirt-dress kit in quirky pineapple-print poplin. From approx £14, www.louisantoinette.co.uk



DO IT YOURSELF

▼ Put down your needle and thread and try a different kind of DIY with a make-it-yourself copper clothes rack for your sewing room. We spend too long stitching our me-made frocks to hide them away in the wardrobe, so we'll be putting our latest handiwork proudly (and stylishly) on display on this on-trend copper rail with an industrial-cool look. Find the tutorial at en.dawanda.com/diy-tutorials



FORTIES FUN

Jennifer Lauren proves that sleek tailoring and whimsical design details are a perfect match with her 1940s-inspired Laneway Dress. With a turn-back collar and elegant V-back, it has dream-summer-wedding-outfit written all over it! PDF approx £13, www.jenniferlaurenhandmade.store

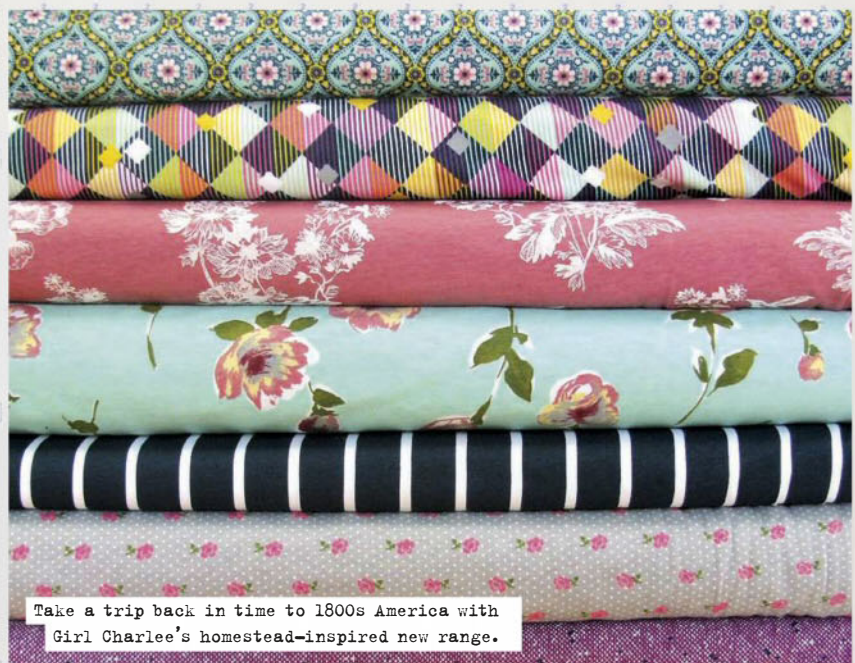


CLASSIC COOL

Head to Cashmerette for an effortlessly stylish shirt dress with curve-friendly princess seams, a traditional or band collar and a pleated or gathered skirt. The Lenox looks fabulous in classic chambray, or in a bright print for the wow factor. PDF approx £11, printed pattern approx £14, in sizes 12 to 28, shop.cashmerette.com

PRAIRIE PRETTIES

Channel *Little House on the Prairie* with Girl Charlee's latest collection in the Bolt range, Homestead Life. Inspired by life on the homestead settlements of mid-1800s America, the collection brings the era to life and gives it a modern twist with bold blooms, checks, stripes, birds, log cabins and textured tweed prints in a palette of berry, dusky rose and hazy aqua. As with the rest of the Bolt range, the designs are printed on medium-weight spandex knits with a four-way stretch, so are ideal for comfy tees and dresses. £17.95 per metre from www.girlcharlee.co.uk



Take a trip back in time to 1800s America with Girl Charlee's homestead-inspired new range.



MINI PROFILE

HELEN BAKER

Designer Helen Baker grew up in a house where the sewing machine was constantly in use. "Either my mum would be running up a pair of curtains for the house or I'd be making hair scrunchies for my friends (this was the 1980s, after all)." Helen was a primary school teacher for nine years. "I loved the creative side to the job and found working with children who were so confident to express themselves inspirational to see." Helen left teaching when her two sons were little and started a small sewing business, but says she "soon found I enjoyed designing more than making."

After moving from Cornwall to Wiltshire in 2015, Helen was looking for fabrics for her new home "that suited us as a family whilst not compromising on style." Frustrated by not finding anything to suit, Helen decided to look into how fabrics are designed. "I taught myself digital illustration, took online surface pattern courses and read lots of books. I used our new home as a testing ground to see if the designs translated from the screen to fabric to be made into blinds, cushions and lampshades."

Helen was so pleased with the results that she went on to design her debut collection, titled 'You can take the girl out of Cornwall...' which she says is "a contemporary take on coastal designs inspired by growing up and living in Cornwall. All my designs are suited to family friendly living and are gender neutral."

Helen says she strives for her designs to be accessible to all. "I use elements such as nature that everyone can connect with. I am also drawn to silhouette shapes, gender-neutral colours and bold, unfussy patterns. I take photos on my phone for inspiration, then I'll sketch them out in a sketchbook with pencil, trying different layouts and repeats, and then I'll work on the final pattern on the computer."

One of her favourite pieces is The Cornish Cloud. "I wanted to redesign and update the nautical stripe so I created the horizontal lines based on Breton stripes (my husband is half French), and I love clouds so I added a cloud motif. I love its simplicity and clean lines."

Her first collection is proving to be popular. "The need for family friendly designs that suit modern family living really seems to resonate with people." She's now working on her next one, inspired by British gardens. "I'd love to see my designs on a range of homeware products (plates, mugs, bowls, glasses) so people get to enjoy these designs in their everyday lives." We shall look forward to it! See more at www.helenbaker.com



Helen's uses "elements such as nature that everyone can connect with" in her work.

INSPIRING BOOKS



TILDA PLANNER 2018 (£12.99, F&W Media)

Plan your days in the new hardback, cloth-bound 2018 Tilda Planner. Each week, turn the page to a new photograph of adorable Tilda fabrics and products created by Norwegian designer Tone Finnanger and get inspired. The month-to-view calendar will help you plan out your year of exciting stitchery events. www.sewandso.co.uk



MADE FOR BABY Ayda Algin (£14.95, Tuva Publishing)

Celebrate a new arrival with a lovingly hand-sewn gift with this book of 20 inspirational ideas, ranging from bibs and blankets to clothing and stuffed toys, with beginner-friendly illustrated step-by-step instructions. *Psst! Find a project from the book on page 72.* www.tuvapublishing.com



MR X STITCH GUIDE TO CROSS STITCH

Jamie Chalmers (£12.99, Search Press)

Jamie Chalmers' new book celebrates cross stitch as an art form through innovative projects aimed at all abilities. Jamie includes the basics as well as offering his own twist. This is cross stitch, but not as you know it! www.searchpress.com



HALF YARD VINTAGE Debbie Shore (£9.99, Search Press)

Bring a touch of vintage-inspired shabby-chic style to your home with Debbie Shore's latest book of 23 accessories to sew. Pretty up a bedroom with a lacy pillow cover and dressing table cover, set the table for afternoon tea with a tea cosy, tray cover and cake frill, and get ready for the festive season (it's never too early!) with Christmas makes to bring seasonal cheer to your sewing. www.searchpress.com



WALL TO WALL

We change our minds more than we change our sewing machine needles, so we love decor we can mix and match to suit our mood – especially when it comes to sprucing up our favourite room in the house, our craft space. Pixers' wall murals are made to fit your wall, self-adhesive and reusable, and there are millions of designs to choose from, ranging from pretty florals to abstract prints. Hello, shiny new sewing room! Browse the range at new.pixersize.com

THINK PIECE

▼ The thoughtful details of Maven Patterns' Rochester style had us adding it to our basket straight away. An update on the classic shift dress, it has a unique frilled elasticated neckline (so no fastening needed, hurrah!), loose-fit silhouette and curved hemline. This is the ideal pattern for those looking to take their stitching skills to the next level. PDF £9.96 from www.mavenpatterns.etsy.com



SUMMER STAPLE

We can't wait to stitch up the brand-new design from Sew Over It, a gorgeously stylish and wearable summer shirt dress that's the perfect balance of comfort and cool. The Penny Dress features a sleeveless button-up bodice, flat collar, 50s-style dropped shoulder, easy-fit elasticated waist and neat midi-length skirt. We'd love this dress in a pretty cotton lawn. PDF pattern £7.50, www.sewoverit.co.uk



3 OF THE BEST

PEACHY KEEN

We're looking to the fruit bowl for summer style inspiration with these pretty-in-peach finds.

1. This mini canvas backpack in a cute pug print will have your little ones holidaying in style this summer (although you may be tempted to keep it for yourself!). £21.97, www.beckyandlolo.co.uk

2. Add an on-trend hint of copper to your home with this washable paper pot by Warm Grey Company. It's the perfect size for storing everything from threads to flowers. £12 each, www.warmgreycompany.etsy.com

3. Accessorise your summer me-made frocks on cooler days with this floaty scarf in an abstract design – or hang it on your wall! £28, www.oliverbonas.com





CLUB TROPICANA

Tropical prints were everywhere on the high street last summer, and they're back and bolder than ever this season – think big blooms and large-scale palms. We're taking inspiration from The McCall Pattern Company's summer collection and adding a few tropical numbers to our holiday wardrobe; the M7592 tank dress' simple style will let a vibrant print do the talking, while the M7595 sun dress is perfect for swishing about poolside. We're off to the tropics! £9.25 each, www.sewdirect.com



SEW SCRUMPTIOUS

Following on from the success of the cute and kooky Marshmallow Dress pattern for women, CocoWawa Crafts have launched a version of this sweet dress for children ages 3 to 12. The Mini Marshmallow Dress keeps its trapeze shape, fun ruffle, Peter pan collar and optional bow. There are also three sleeve styles, giving lots of options to wear all year round. PDF pattern £9.50 from www.cocowawacrafts.com

Make a cute mini-me version of the Marshmallow Dress. Twinning is winning!



OUT & ABOUT

SKILLS, SHOWS & EVENTS

29-30 JULY

Weaving Colour: 2-Day Tapestry Course. Fashion and Textile Museum, London. Learn the art of colour-blending with master weaver Caron Penney. www.ftmlondon.org

10-13 AUGUST

Festival of Quilts. NEC Birmingham. Learn new skills, admire the work of talented quilt artists from around the world and stock up on supplies. www.thefestivalofquilts.co.uk

31 AUGUST

Bundle Dyed Scarf Workshop. In Bristol Studios, Bristol. Learn how to create patterns and prints on silk fabric using flowers, leaves, roots and barks. www.floraarbuthnott.com

21-24 SEPTEMBER

The Great British Sewing Bee Live. Excel London. Sew along with the GBSB judges and contestants at this new event. *Psst! Turn to our feature on page 80 for a discount code.* www.thegreatbritishsewingbeelive.com

5 FAB FINDS

Picnic party

Be the most colourful picnickers at the park with these rainbow-hued al fresco accessories.



TASTE OF SUMMER

These bright and colourful melamine forks add a burst of sunshine to any picnic. £6.50, www.sistersguild.com



TWINKLE TWINKLE

Pour refreshments in these fun-sized drinks bottles; perfect for your little stars. 85p each, www.candleandcake.co.uk

SUNSET SALAD

Serve a tropical feast with pink ombre servers in environmentally friendly bamboo. £7.50, www.amaroni.com



DRAPED IN RAINBOWS

No need to pick your favourite hue – have them all with this bright blanket. £54, www.cotswoldtrading.com

PLATE UP

Treats will look even more appetising on these rainbow paper plates. £5.95 for 12, www.luckandluck.co.uk





SCRAP HAPPY

My Handmade World by Giovanna Monfeli is packed with ideas for using your treasured remnants, from nursery mobiles and toy animals to soft pillows and pouffes, with fabulous photographs and illustrated step-by-steps. It's time to gather up your fabric scraps! £16.99, www.meteorbooks.com



LABEL LOVE

Add a professional finishing touch to your me-mades with a free printable label from Madeit Patterns, designer of this issue's Drop Set sewing pattern on page 46. Simply download the labels, print your chosen design on iron-on transfer paper, then iron it onto a piece of ribbon and sew the label on your project. Download the free set at www.madeit-patterns.com

TEXTILES IN TOKYO

▼ Explore Japan's fascinating mix of ancient culture and modern technology and long history of textiles excellence with Stitchtopia's Quilt Festival & Textile Contrasts of Japan trip on 15th-29th January 2018. This sewist's holiday of a lifetime will offer stitchers the chance to attend Tokyo's Great Quilt Festival and explore the very best of Japan's sights and textiles. www.stitchtopia.co.uk



ALL IN THE DETAILS

Learn how to add stunning finishing touches to your projects with new book *Creating Couture Embellishment*. Author Ellen Miller taught at Boston's School of Fashion Design for ten years and worked as a seamstress and costumer. Chapters cover pleating, quilting, tucking, ruffling and smocking, as well as applying feathers, beading, embroidery, flowers, ribbons, piping, fringes and braids, and using lace. £50, www.laurenceking.com



LIBERTY CORNER

DOWN TO A FINE ART

We're gradually filling up our wardrobe with me-made Liberty frocks, and now it's time for us to fill our walls with Liberty prints too thanks to artist Jenny Dunlop. Jenny is based in South Wirral, UK, and uses Liberty scraps to add colour and print to her beautiful and varied artworks, which range from elephants and penguins to traditional French village scenes and even the Liberty store itself. From £20 for a print, www.jennydunlop.etsy.com

We've never seen Liberty fabric scraps used like this before!



Sewing QUARTER

WATCH IT • LOVE IT • SEW IT

Sewing Quarter is the only TV channel dedicated to all things sewing. Watch it live on Freeview channel 78 and online at www.sewingquarter.com

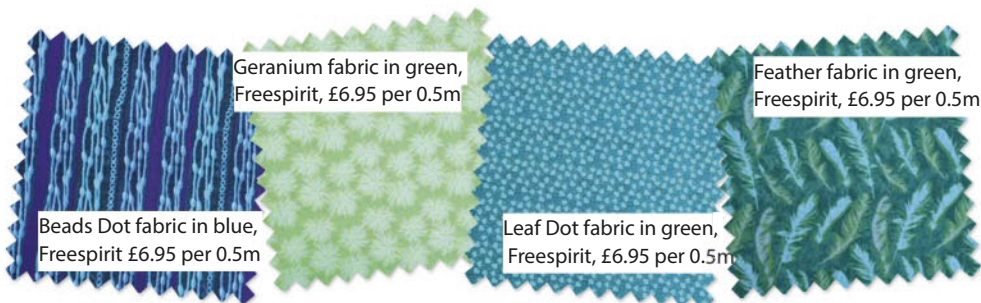
A GIFT FOR YOU!

With any purchase at Sewing Quarter, you'll get a pair of Sewing Quarter Dressmaking Scissors absolutely free!* Use the exclusive discount code, SEWINGLOVE1 to grab yours! These dressmaking scissors come with 23cm (9") sharp stainless steel blades for precision cutting. Their comfortable, easy-to-hold handles make them easy to use, and they're effective on light and heavy-weight fabrics alike. Find them (and lots more essential haberdashery, tools, and fabrics) at www.sewingquarter.com



EDITOR'S PICK

SEASONAL TRENDS This month we can't get enough of calming blue, turquoise and green hues – reminds us of tranquil days at the beach, paddling in the sea!



SHOP ONLINE! Browse over 340 designs in our online shop and buy custom-cut fabric ranging from tiny charm packs to half-metres – perfect for dressmaking. You'll also find dress patterns, books, tools, craft kits, rulers, templates, sewing machines, books, jewellery, storage and more at www.sewingquarter.com

DESIGNER UPDATE JENNIFER TAYLOR



Jennifer Taylor has been designing and making projects for Sewing Quarter since its launch in January 2017 and now she's a regular guest on the show!

What's more, last month saw the launch of Jennifer's book, *Girl with a Sewing Machine*, which is packed with tips, guides and inspiration on all things sewing. If you've tuned into the show you'll have seen Jennifer showing off her favourite projects from the book and giving plenty of advice on how to get more from your sewing machine.

Missed her shows? Don't worry you can catch up on all the live shows on our Sewing Quarter YouTube channel at www.youtube.com/sewingquarter



Girl with a Sewing Machine (£12.95) is packed with all the tricks of the trade that Jennifer has learned so far! Get yours at www.sewingquarter.com

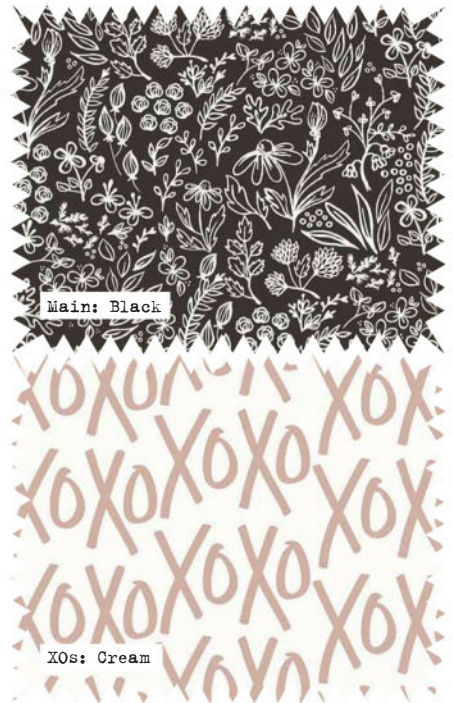


SHINY & HAPPY

GLIMMER SOLIDS

BY CLOUD9 FABRICS

Add a glorious hint of sparkle to your summery projects with this collection of textural cross-woven fabrics in a range of eight tantalising metallic shades, from warm champagne, rose gold and pearl, to cool ice, silver and mineral. Get your shimmer on! www.hantex.co.uk/cloud9



SPICE IT UP

SPICES FUSION BY ART GALLERY FABRICS

Turn up the heat with the gorgeous exotic florals and geometric patterns of the new Spices Fusion collection by Art Gallery Fabrics. Make a bold statement in saturated shades of punchy orange and plum along with dusty jade and mustard yellow, perfect for fabulous skirts and dresses for summer and cheerful accessories and home furnishings. It's time to spice up your sewing! www.hantex.co.uk/agf



LATEST SQUEEZE

YES PLEASE BY JEN ALLYSON FOR RILEY BLAKE DESIGNS

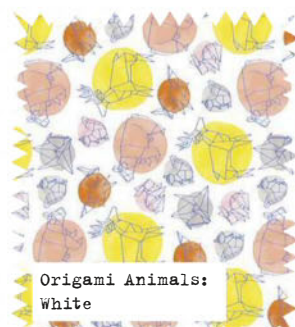
Spread the love with a host of romantic new prints by Jen Allyson featuring pretty florals, folksy arrows, ditsy hearts, plaids, dots, smart stripes and hugs and kisses, all wrapped up in an elegant dusky rose, cream and black palette. www.rileyblakedesigns.com

EASTERN VOYAGE

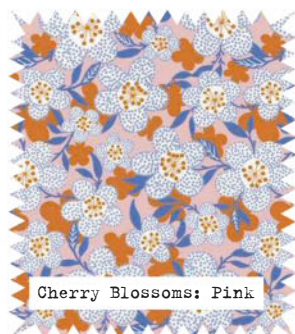
DAYDREAM BY JOSEPHINE KIMBERLING FOR BLEND FABRICS

Surface designer Josephine Kimberling jets us to the Far East in this range of imaginative, colourful prints for Blend.

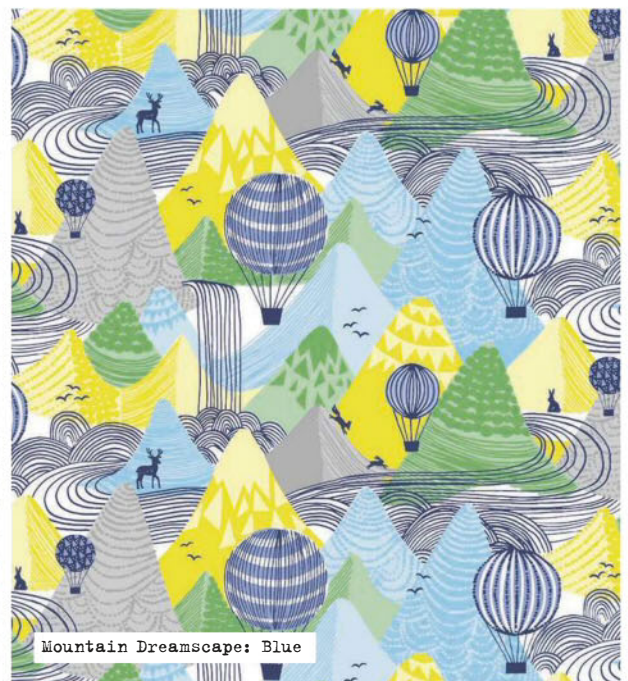
With quirky origami animals (from foxes and squirrels to stags and bears), whimsical mountainscapes featuring hot air balloons floating high above forested and snow-capped peaks (spot the little bunnies!), and a profusion of luscious cherry blossoms, this range has us daydreaming of far-away lands. Josephine has also included glimmering dot-to-dot and geometric stars and delicate floating parasols to add to the Asian-inspired vibe. In fresh pink, blue and green with splashes of zingy yellow, these cotton prints will brighten up your stash and your me-made wardrobe. We're planning breezy frocks for sunny days, and fun makes for the kids and home. www.blendfabrics.com



Origami Animals: White



Cherry Blossoms: Pink



Mountain Dreamscape: Blue

SEW
OVER
IT



New fabrics added every week
£2.50 UK P&P sewoverit.co.uk/shop
FREE for orders £75+ 0207 326 0376

FN FRANK NUTT
SEWING MACHINES

0121 443 5555
17-23 Poplar Road,
Kings Heath,
Birmingham B14 7AA

www.franknutt.co.uk

Three ways to buy



VISIT THE SHOP



OVER THE PHONE



ONLINE



Over 80 sewing machines and overlockers on display ready for demonstration. (Bernina, Brother, Babylock, Elna, Janome, Singer, Juki, Husqvana)

Helpful honest and friendly advice and after sales support

Workshops and training take place on the first floor of the shop

Car park right next to the shop

WIN £299 TEFAL PRESSING PRODUCTS

Win a set of essential ironing and steaming products from Tefal.

We lost count of how many times the *Great British Sewing Bee* judges reiterated the importance of pressing on the show. Whether you're making new garments or home furnishings, pressing will give your projects a professional finish. This month's prize has every pressing necessity covered, with a steam generator, hand-held steamer and steam iron from Tefal, worth £299 in total. From ironing creases out of your fabric for accurate cutting out and pressing seams like a dream, to smoothing any wrinkles in your finished me-mades, this set can do it all! See more at www.tefal.co.uk and enter the giveaway today at www.simplysewingmag.com

WIN
£299
PRESSING
PRODUCTS



Tefal Access Steam
DR8085



Tefal Ultimate FV9736



Fasteo SV6040

See www.simplysewingmag.com to enter today!
(UK only, see competition rules on p6.)

Simply Sewing

FRESH IDEAS WITH FABRIC



START YOUR FREE TRIAL TODAY*!

- ⊕ Download the latest issue straightaway, for free
- ⊕ Your next issue is free too
- ⊕ Get a further 12 issues in your first year
- ⊕ All issues download automatically
- ⊕ Download it once... read it offline forever



iPad is a trademark of Apple Inc., registered in the U.S. and other countries. App Store is a service mark of Apple Inc.

NOOK is a registered trademark of Barnes & Noble, Inc. NOOK Tablet is a trademark of Barnes & Noble, Inc

*Free trial not available on Zinio

SAVE TIME, MONEY AND HASSLE WITH AN ANNUAL SIMPLY SEWING SUBSCRIPTION



23 THINGS TO SEW

Simply Sewing

FRESH IDEAS WITH FABRIC

THE GREAT SAVINGS EVENT
SAVE UP TO 25% OFF
FREE SHIPPING

EXCLUSIVE TICKET OFFER

ISSUE THIRTY TWO

9 KITCHEN ACCESSORIES
SEW FOR YOUR HOME

THE MIA DRESS + TOP
STATEMENT SLEEVES SET
IN SIZES 6-20

JUST TAP
HERE TO
SUBSCRIBE
TODAY

23 THINGS TO SEW

Simply Sewing

FRESH IDEAS WITH FABRIC

THE MIA DRESS + TOP
STATEMENT SLEEVES SET
IN SIZES 6-20

9 KITCHEN ACCESSORIES
SEW FOR YOUR HOME

+ SHIRT DRESS
BABY KIMONO
T-SHIRT TOTE

GET THE LOOK

High street fashion trends to sew at home

HOW TO: Pistil stitch • Shirt refashion • Maternity hacks • Sew with oilcloth • Lace inserts

GET THE LOOK

High street fashion trends to sew at home

Shirt refashion • Maternity hacks • Sew with oilcloth • Lace inserts

TO SUBSCRIBE SIMPLY VISIT: WWW.SIMPLYSEWINGMAG.COM/DIGITAL

* Free trial not available on Zinio.
The digital version of the magazine does not include the cover gift that you would find on newsstand copies.



BUT FIRST, COFFEE

We're celebrating our favourite time of day with heart-motif coffee-break makes in retro prints.

Designer: **JESSICA ENTWISTLE** Styling: **LISA JONES** Photography: **PHILIP SOWELS**





SLOGAN BANNER

Whether we're making a new frock, taking the kids to school or heading off to work – it all starts after we get our all-important caffeine fix! So we're declaring our love for our morning cup of Joe by sewing up this retro-diner-inspired banner for our kitchen (not before we've had our coffee, though!).

HEART COASTERS

We've all got pretty scraps in our stash that we just don't have the heart to throw away, and these heart-motif coasters are the answer! Our stash-busting set gives you a chance to perfect your topstitching and features a protective wadding layer. Swap the hearts for initials for a quick-sew house-warming gift.







HEART APRON

If you're a home sewist looking to give dressmaking a go, this almost-too-nice-to-bake-in apron will give you a chance to try key skills such as adding pockets, using bias binding and making a waistband. Choose graphic, mid-Century prints for a retro, kitsch vibe.

CAFETIÈRE COSY

Keep your coffee piping hot for longer in this simple-sew cafetière cosy with a snap fastening. It can be made in just a couple of hours, so you'll even have time to treat yourself to a cup afterwards (go on, you deserve it).



HEART-SHAPED OVEN MITT

Keep a pair of these oven mitts to hand for when you finally hear that long-awaited 'ding' from the timer – the heart shape makes them flexible and easy to grip, so you can get your own mitts on that delicious cake in no time.

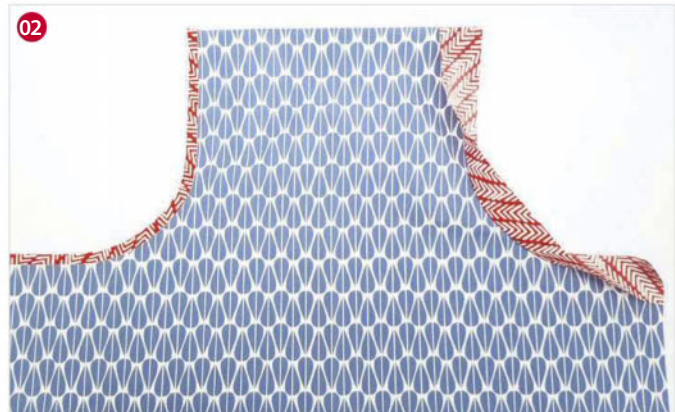
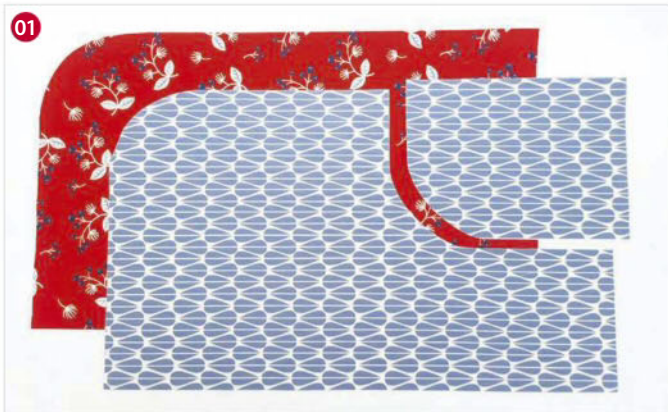
HOT PAD

Protect your worktop by placing fresh-out-of-the-oven treats on this hot pad, made with a layer of insulating wadding to shield your surface and hands from the heat. We can't promise it will protect your baked goodies from being snapped up before the coffee is brewed, though!





MASON CASH



APRON

YOU WILL NEED

- Main fabric: 50x55cm (20x22in)
- Contrast fabric: 70x112cm (28x44in)
- Accent fabric: 45x55cm (18x22in)
- Bondaweb: 12x12cm (5x5in)
- Matching sewing thread
- Basic sewing kit

FABRICS USED

Main fabric: Little Leaves. Ref: MONSL08.

Contrast fabric: Sprig. Ref: MONSL11.

Accent fabric: Herringbone. Ref: MONSL02.

From Simple Life by Monaluna. For stockists visit www.hantex.co.uk/#findstockist

NOTES

- Use a 1cm (3⁄8in) seam allowance.
- You will find the pocket and heart template is on the pull-out pattern sheet provided with this issue.

CUTTING OUT

Step one From the contrast fabric cut:

Lining: 50x55cm (20x22in).

Waistband strip: three pieces, 10x55cm (4x22in) each.

Apron binding strip: 50x55cm (20x22in).

Follow the instructions below for making binding cut on the bias.

Step two From the accent fabric cut:

Pocket bias strips: two strips 4x35cm (1½x13¾in), cut on the bias.

Heart: 12x12cm (5x5in).

MAKING BIAS BINDING

Step one To finish the curved edges, you will need to use binding cut on the bias. To find your fabric bias, fold the fabric so the edges meet to form a triangle and press. This line is the bias grain. Using a long ruler and a rotary cutter, cut enough 4cm (1½in) wide strips to make a 150cm (60in) long bias strip.

If you don't have a rotary cutter then you can draw the lines on in pencil then cut along them.

Step two To join the bias strips together, place two strips at 90-degree angles to each other with right sides (RS) facing and raw edges matching then sew together diagonally.

Step three Press your seam open and trim the

seam. Repeat these steps to join all the strips together to the required length.

CUTTING THE CURVES

Step one Trace the pocket template from the pattern sheet and cut it out.

Step two Fold the main fabric piece in half wrong sides (WS) together so that the 50cm (20in) edges meet, then press the fold.

Step three Pin the pocket template to one of the top corners through both layers, lining it up to the side and top edge.

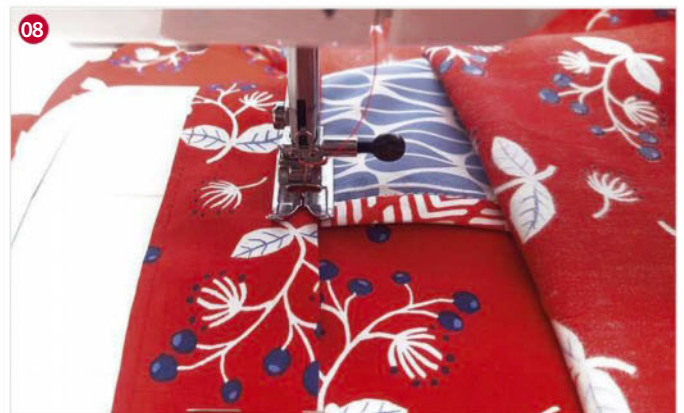
Step four Cut around it through both layers to create the pocket openings.

Step five With this main fabric piece still folded in half, place the curved edge of the pocket template on the bottom corner at the raw edges and draw around it. Cut along the traced curve through both layers of fabric to create curved corners.

Step six Repeat this with the lining fabric to cut the curved bottom corners in the same way as for the main fabric, but this time don't cut out the pocket sections at the top. **01**

MAKING UP THE POCKET FRONT

Step one Take one accent fabric strip and pin to one of the curved pocket edges of the main



fabric piece, matching raw edges.

Step two Using a 1cm ($\frac{3}{8}$ in) seam allowance, sew the bias strip into place all the way along the edge of the curve.

Step three Fold the other long edge under by 1cm ($\frac{3}{8}$ in) then fold it to the WS of the main fabric and pin.

Step four Topstitch the blinding into place.

Step five Repeat this with the other accent binding strip to bind the other pocket curve. **02**

ADDING THE HEART

Step two Press the Bondaweb onto the WS of the heart fabric.

Step two Trace around the heart template and cut it out. Place the template onto the paper side of the Bondaweb and draw around it then cut it out.

Step three Peel off the paper backing then press the heart to the bottom left-hand corner of the main fabric pocket piece.

Step four Topstitch into place just inside the cut edges of the heart to secure. Work two lines of stitching for decoration. **03**

ASSEMBLING THE APRON

Step one Lay the lining fabric RS up. Pin the main fabric piece RS up on top, making sure the

raw edges are matching.

Step two Sew together around the edge, but using just a 5mm ($\frac{1}{4}$ in) seam allowance so this will be hidden by the binding later. **04**

Step three Pin the apron bias strip RS together with the edges of the apron, matching raw edges. Pin it down the sides, around the curves and across the bottom, leaving the top edge unbound.

Step four Stitch into place all the way around.

Step five Fold the other long edge under by 1cm ($\frac{3}{8}$ in) then fold it around to the WS of the main fabric and pin.

Step six Topstitch the blinding into place. **05**

JOINING THE WAISTBAND STRIPS

Step one Place two of the waistband strips RS facing and stitch together along one short edge. Press the seam open.

Step two Repeat this to join the other waistband strip to one end of the joined strips to make one long waistband strip.

MAKING THE WAISTBAND

Step one Measure to find the centre of the length of the joined strips and mark this point.

Step two Place your apron RS up and measure then mark the centre point of the top raw edge.

Step three Lay the waistband down just above the apron, making sure that the central marked points line up. Make a mark on the waistband 1cm ($\frac{3}{8}$ in) beyond the apron edge on both sides.

Step four Fold the waistband in half lengthways with RS together, matching raw edges. Pin together and draw a diagonal line at each end as shown so you can stitch along them.

Step five Starting at one of the marked points, sew together to the short end and along the drawn diagonal line to make it into a point.

Step six Repeat this to sew from the other marked point to the end, making it into a point again. This will leave the central section of the waistband unstitched at this stage. **06**

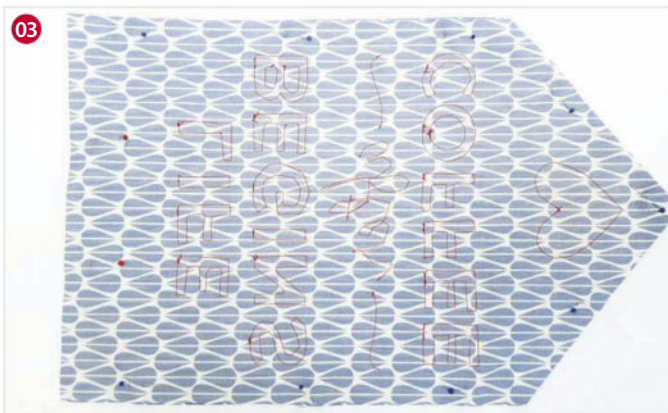
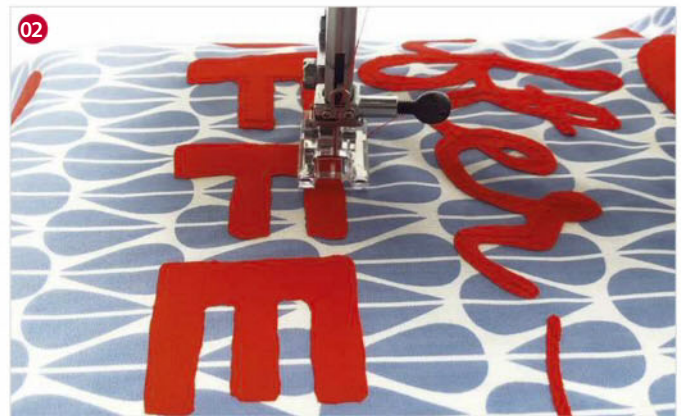
Step seven Clip the corners and turn the waistband RS out through the centre.

Step eight Turn the raw edges of the unstitched central section under by 1cm ($\frac{3}{8}$ in) to the WS to match up with the sewn seams and press.

ATTACHING THE WAISTBAND

Step one Slot the apron into the waistband, making sure the marked central points line up and that the edge of the apron is laying against the inside of the waistband's top fold. Pin in place.

Step two Topstitch all the way around the waistband to join and neaten the edges. **08**



BANNER

YOU WILL NEED

- Main fabric: 50x60cm (20x24in)
- Appliqué fabric: 40x30cm (16x12in)
- Wooden dowel: 32cm (12½in) long
- Twine: 1m (1yd)
- Bondaweb: 40x30cm (16x12in)
- Matching sewing thread
- Basic sewing kit

FABRICS USED

Main fabric: Little Leaves. Ref: MONSL08. From Simple Life by Monaluna.

Appliqué fabric: Pearl Cotton Solids, Red. Ref: CPF5011
For stockists visit www.hantex.co.uk/#findstockist

NOTES

- Use a 1cm (¾in) seam allowance.
- You will find the template needed on the pull-out pattern sheet provided with this issue.

CUTTING OUT

We have given you two different sizes of banner on the pattern sheet so you can choose whether to make a large or small banner. We have made the small banner, so you will need to adjust the fabric measurements accordingly if you want to make the larger one.

Step one Trace the outline of the banner, then add 1cm (¾in) outside the lines for the seam allowance and an extra 6cm (2¾in) to the top.

Step two Use this pattern piece to cut two pieces of the main fabric for the front and the back of the banner.

MAKING THE APPLIQUÉ

Step one Trace over the text and heart on the template onto tracing paper, then turn this over and draw over the back so they are in reverse.

Step two Place the Bondaweb with the paper side up on top of this reversed tracing, and trace over the text and heart.

Step three Press the traced Bondaweb onto the wrong side (WS) of your appliqué fabric, using a medium dry heat.

Step four Cut out the letters and heart. ⁰¹

ATTACHING THE APPLIQUÉ

Step one Peel off the backing paper from your

cut out Bondaweb text and heart.

Step two Place the text and heart on top of the right side (RS) of the banner front fabric piece using the template as a positioning guide.

Step three Once you're happy with the positioning, press them into place until they are firmly attached.

Step four Topstitch carefully around the appliquéd pieces. ⁰²

MAKING UP

Step one Place the appliquéd banner front and back RS facing and pin together. ⁰³

Step two Sew together all the way around, leaving an 8cm (3in) turning gap in the centre of the top edge.

Step three Clip the corners then turn the banner RS out through the turning gap. Carefully poke out the corners.

Step four Tuck the edges of the turning gap to the inside and press.

Step five Fold over the top edge to the back by 6cm (2¾in) and pin in place.

Step six Sew this top edge down close to the edge to make a casing and then stitch the turning gap closed.

Step seven Push the dowel through the casing and tie twine to each end for hanging. ⁰⁴

OVEN MITT

YOU WILL NEED

- Main fabric: 25x50cm (10x20in)
- Contrast fabric: 30x112cm (12x44in)
- Insulating wadding: 25x25cm (10x10in)
- Cotton wadding: 25x50cm (10x20in)
- Matching sewing thread
- Basic sewing kit

FABRICS USED

Main fabric: Sprig. Ref: MONSL11.
Contrast fabric: Herringbone. Ref: MONSL02. From Simple Life by Monaluna. For stockists visit www.hantex.co.uk/#findstockist

NOTES

- Use a 1cm (3/8in) seam allowance.
- You will find the templates on the pull-out pattern sheet provided.

CUTTING OUT

Step one Trace the outline of the half heart oven mitt template from the pattern sheet to use for the main body.

Step two Trace the pocket section, which is the curved part of the heart and the diagonal line.

Step three Cut the main fabric as follows:

Main body: Fold the fabric in half and pin the straight edge of the main body template on the fold and cut around it.

Pockets: Place the pocket template on the folded fabric and cut around it so you have two mirror image pieces.

Step four Cut the contrast fabric as follows:

Main body lining and pocket linings: Cut one main body on the fold and two mirror image pocket pieces in the same way as you did for the main fabric.

Outer binding: Cut and join strips on the bias to make one length 4x60cm (1½x23½in).

Loop: 4x28cm (1½x11in) strip.

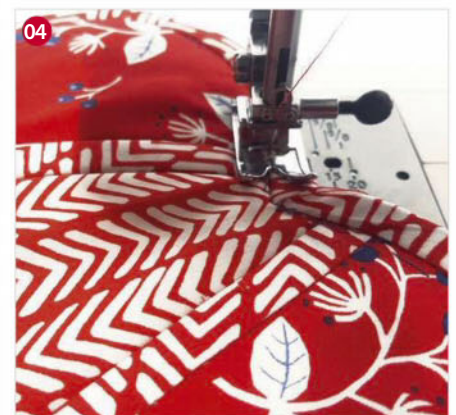
Pocket bindings: two 4x17cm (1½x6¾in) strips.

Step five From the insulating wadding, cut one main body piece on the fold.

Step six From the cotton wadding cut one main body on the fold and two mirror image pocket pieces in the same way as for the main fabric.

MAKING THE POCKETS

Step one Place one pocket lining piece right side (RS) down, place a cotton wadding pocket piece on top, and then the main fabric pocket piece on top to make a sandwich.



Step two Pin together then sew all the way around the pocket edge using a 5mm (¼in) seam allowance.

Step three Take one pocket binding strip and pin it RS facing on the main fabric of the pocket sandwich on the long edge, matching raw edges. Stitch together.

Step four Fold the other long edge of the binding under by just under 1cm (¾in), fold it around the edge of the pocket and topstitch.

Step five Repeat this to make and bind the other pocket in the same way. **01**

SEWING THE MITT TOGETHER

Step one Place the main body fabric wrong side (WS) up, with the insulating wadding shiny side down on top. Place the cotton wadding on top and the main body lining fabric RS up on top. Pin all the layers together.

Step two Sew the layers together all the way around the edge using a 5mm (¼in) seam allowance and a longer stitch length to work through all the layers. **02**

Step three Place the heart pockets on top of the assembled main body, both RS up.

Step four Pin then sew together using a 5mm (¼in) seam allowance around just the outer edges of the heart.

MAKING THE HANGING LOOP

Step one Fold the loop strip in half lengthways with WS together. Open out then fold the edges into the centre, and then fold in half again so the raw edges are enclosed.

Step two Topstitch the folds together.

Step three Fold this in half to make a loop then tack the short ends together.

BINDING THE MITT

Step one Starting at the point where the hanging loop will be attached as shown on the template, pin the outer binding around the main body RS together, matching raw edges.

Step two Sew the binding in place, and when you get to the bottom point and heart top point, stop and pin the binding into a mitre. **03**

Step three Pin the hanging loop with the ends tucked under the back of the binding on the back of the main body.

Step four Fold, press and topstitch the binding into place in the same way as you did for the pocket binding, encasing the ends of the hanging loop as you go. **04**

Step five Turn your hanging loop upwards and restitch it in place along the topstitched line. This will ensure your mitt hangs down flat when you slip the loop over a hook.



COASTERS

YOU WILL NEED

To make four coasters

- Main fabric: 50x25cm (20x10in)
- Appliqué fabric: 20x20cm (8x8in)
- Wadding: 25x25cm (10x10in)
- Bondaweb: 20x20cm (8x8in)
- Matching sewing thread
- Basic sewing kit

FABRICS USED

Blue Tulip. Ref: MONSL10.
 Herringbone. Ref: MONSL02. Little
 Leaves. Ref: MONSL08. Sprig. Ref:
 MONSL11.
 From Simple Life by Monaluna.
 For stockists visit www.hantex.co.uk/#findstockist

NOTES

- Use a 1cm (3/8in) seam allowance.
- You will find the heart template on the pull-out pattern sheet provided with this issue.

CUTTING OUT

Step one For each coaster, cut out each of the following pieces:

Main fabric: cut two pieces 12x12cm (4¾x4¾in) for the front and back.

Appliqué fabric: 10x10cm (4x4in).

Wadding: 12x12cm (4¾x4¾in).

Bondaweb: 9x9cm (3½x3½in).

WORKING THE APPLIQUÉ

Step one Place the Bondaweb paper side up on top of the heart template and trace around it.

Step two Press the traced Bondaweb paper side up onto the wrong side (WS) of the appliqué fabric piece. Use a dry, medium-temperature iron for this.

Step three Carefully cut out the heart along the drawn lines and remove the paper backing.

Step four Place the coaster front fabric right side (RS) up then place the cut out heart centrally on top of it.

Step five Remove the paper backing and press the heart into place. **01**

Step six Pin the appliquéd front fabric RS up on top of the wadding.

Step seven Sew roughly around the heart twice using a contrasting darker thread through all the layers. **02**

ASSEMBLING THE COASTER

Step one Place the appliquéd coaster front piece RS up.

Step two Lay the coaster back piece on top of it so they are RS are facing and pin in place.

Step three Sew the fabric and wadding together all the way around, but leaving a 4cm (1½in) turning gap in the centre of the bottom.

Step four Clip the corners and trim off the excess fabric and wadding. **03**

Step five Turn the coaster RS out through the turning gap.

FINISHING OFF

Step one Turn the edges of the turning gap to the inside and press.

Step two Finally, topstitch all the way around the coaster edge to close the turning gap and to decorate. **04**



CAFETIÈRE COSY

YOU WILL NEED

- Main fabric: see instructions for details
- Lining fabric: see instructions for details
- Insulating wadding: see instructions for details
- Snap fastener and fastening tool
- Hammer
- Matching sewing thread
- Basic sewing kit

FABRICS USED

Main fabric: Blue Tulip. Ref: MONSL10.

Lining fabric: Herringbone. Ref: MONSL02.

From Simple Life by Monaluna. For stockists visit www.hantex.co.uk/#findstockist

NOTE

- Use a 1cm (3/8in) seam allowance.

MEASURING UP

Step one The amount of fabric you need is dictated by the size of your cafetière so you need to take the following measurements:

Height: Measure from just below the spout of your cafetière to just above the bottom of it.

Circumference: Measure around the circumference of your cafetière – don't include the handle in this. **01**

Step two You then need to work out how wide and long you want your cosy fastening flap to be and where it needs to be positioned. Take the following measurements:

Top: This is the distance from just below your cafetière spout to the inside of the top of the handle where it flattens out.

Bottom: The distance from the bottom of the cafetière up to the just below the handle.

Width: The distance from just below the top of the handle to just above it where the inside of the handle joins the cafetière.

Length: This is 7cm (2 3/4in).

CUTTING OUT

Step one From your main fabric, cut a rectangle to the following measurements:

Length: This is the calculated circumference of the cafetière + the handle length + 2cm (3/4in) for the seam allowances.

Width: This is the calculated height of the cafetière + 2cm (3/4in) for the seam allowances.



Step two Mark on the left short edge the top distance down from the top edge, and the bottom distance up from the bottom edge.

Step three Mark along the long top and bottom edges 8cm (3 1/8in) in from the left short edge (This is the 7cm (2 3/4in) handle length + 1cm (3/8in) seam allowance).

Step four Using an erasable pen, join these lines to mark a rectangle at the top and bottom of the fabric then cut along them. **02**

Step five Repeat these steps to cut the lining fabric and the wadding to the same size and to cut out the rectangles in exactly the same way.

Step six Make sure your lining fabric is right sides (RS) down when you mark and cut it so it is a mirror image of the main fabric.

ASSEMBLING THE COSY

Step one Place your wadding down flat with your lining fabric RS up on top, then your main fabric wrong side (WS) up on top.

Step two Pin the three layers together all the way around the edge.

Step three Sew together all the way around, but leaving a 6cm (2 3/8in) turning gap along the centre of the uncut short edge.

Step four Trim the seam allowance and clip off the corners. **03**

ADDING A SNAP FASTENER

Step one Turn the cosy RS out through the turning gap. Turn the edges of the turning gap to the inside and press, then slip stitch the opening closed.

Step two Wrap the cosy around your cafetière and work out where you want the snap fastener to be positioned.

Step three Mark the point with an erasable pen and add a snap to the fabric following the manufacturer's instructions. **04**



HOT PAD

YOU WILL NEED

- Main fabric: 36x49cm (14 $\frac{1}{2}$ x19 $\frac{3}{4}$ in)
- Contrast fabric: 55x50cm (21 $\frac{1}{2}$ x19 $\frac{3}{4}$ in)
- Insulating wadding: 38x50cm (15x19 $\frac{3}{4}$ in)
- Cotton wadding: 38x50cm (15x19 $\frac{3}{4}$ in)
- Matching sewing thread
- Basic sewing kit

FABRICS USED

Main fabric: Blue Tulip. Ref: MONSL10.

Lining fabric: Little Leaves. Ref: MONSL08. From Simple Life by Monaluna. For stockists visit www.hantex.co.uk/#findstockist

NOTES

- Use a 1cm ($\frac{3}{8}$ in) seam allowance.
- Insulating wadding is an insulated lining used to protect your table and hands from heat transferred from a hot dish. It consists of hollow, polyester fibres needle punched through Mylar. The hollow fibres resist conduction and the reflective Mylar resists radiant energy. The shiny side should face the hot (or cold) item to allow it to reflect the energy back to its source. The polyester protects your hands. The material is also machine washable. It's best to use cotton wadding as well to absorb any condensation created from the heat absorbed.

CUTTING OUT

Step one We made our hot pad to measure 48x35cm (18 $\frac{7}{8}$ x13 $\frac{3}{4}$ in) so that it would fit a baking sheet on top with a little extra around the outside. You can adjust the measurements to make it bigger or smaller if you prefer.

Step two From the contrast fabric cut:

Backing: 38x50cm (15x19 $\frac{3}{4}$ in).

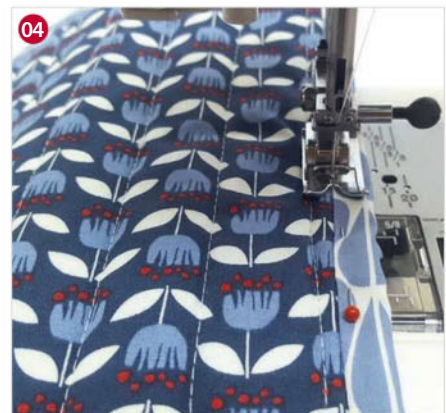
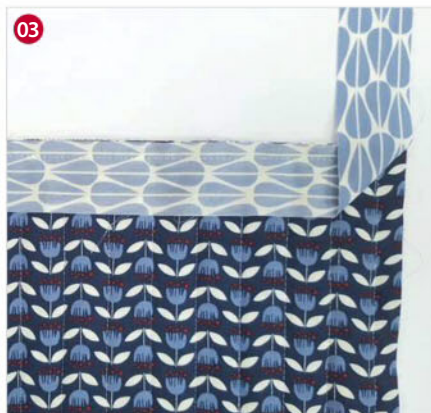
Binding: cut three 4x50cm (1 $\frac{5}{8}$ x19 $\frac{3}{4}$ in) strips.

ASSEMBLING THE HOT PAD

Step one Place the backing fabric wrong side (WS) up. Place the cotton wadding on top, then the insulating wadding shiny side up on top.

Step two Finally, put the main fabric right side (RS) up on top in the centre of this sandwich. **01**

Step three Pin then tack all the layers together.



Step four Quilt your fabric sandwich. Use a long stitch on your machine for this and take it slowly. Our pad is quilted in long rows spaced 2.5cm (1in) apart. You may find it easier to also pin it whilst you quilt and use a walking foot if you have one.

Step five When you have finished quilting all of your rows, stitch together 1cm ($\frac{3}{8}$ in) in from the raw edges of the main fabric. This will hold your sandwich together after trimming off the excess fabric. **02**

Step six Trim off the loose threads and then cut the quilted pad down to 35x48cm (13 $\frac{3}{4}$ x18 $\frac{3}{4}$ in). You will be trimming right up to the line you stitched around the edge.

BINDING THE EDGES

Step one Join the binding strips RS together on the short ends to make one long strip.

Step two Turn one short end under by 1cm ($\frac{3}{8}$ in) to the WS.

Step three With RS together and matching raw edges, pin this end to the centre of one long edge of the quilted pad.

Step four Using a 1cm ($\frac{3}{8}$ in) seam allowance, sew the bias to the pad, stopping 1cm ($\frac{3}{8}$ in) from the end. Backstitch then take it out from under your machine.

Step five Fold the binding up at an angle where the stitching ends. Keeping the top edge straight, fold the binding back down along the next side of the pad and pin into place with RS together again. This will create a mitred corner.

Step six Start sewing the second side from the top edge, sewing over the folded corner.

Step seven Repeat this process to stitch the binding around the edges and fold to mitre each corner in the same way. **03**

Step eight When you reach the start of the sewn-on binding, overlap and stitch the binding strip by 2cm ($\frac{3}{4}$ in) then trim off any excess binding.

FINISHING OFF

Step one Press the front of your pad as well as the binding.

Step two Turn the pad over to the WS. Fold the binding raw edge to the WS by just under 1cm ($\frac{3}{8}$ in), then pin the folded binding to the back of the pad. The pinned binding needs to be slightly wider at the back of the pad.

Step three When you get to the pad corners, fold the corner flat and it will make a neat mitre. Pin in place.

Step four Topstitch the binding into place to finish off. **04**

nominette®

www.nominette.co.uk



BOLT by Girl Charlee

HOMESTEAD LIFE



10% off with code SIMPLY - Free UK shipping over £50

www.girlcharlee.co.uk



Maud's Fabric Finds

Specialist in jersey fabrics

A large selection of dressmaking fabric including 100's of high quality cotton jersey



Shop Now Open

15% OFF

at checkout enter **Simply15**
www.mauds-fabric-finds.com

13 Pyart Court, Forest of Dean, Coleford, GL16 8RG Open: Mon - Sat - 09:30 - 05:30

New Summer Fabrics



DRAGONFLY FABRICS



Modern Dressmaking Fabrics



Cotton Lawns Poplins Linens Chambrays
Art Gallery Jerseys Rayon Challis

www.dragonflyfabrics.co.uk Tel 01892-731087





THE MIA SET

Sew the statement sleeve trend with **The Mia Set** in UK sizes 6-20, a 1960s-inspired shift dress and top with fluted and flared sleeve styles to mix and match.

THE MIA SET

This summer is all about the sleeve! Flared, fluted, floaty, pleated, ruffled, cold-shoulder, bell-shaped, bow-adorned – all the gorgeous sleeve styles we've spotted on the high street this season have us feeling inspired to add statement sleeves to our me-mades, too.

The Mia Set, in UK sizes 6-20 (US 4-18/EUR 34-48), is a modern update on the oh-so-flattering shift dresses of the 1960s and includes two sleeve options to play with: flared and fluted. With so many possibilities for getting creative with sleeve styles, we'll be making more than one Mia! The pattern is designed for lightweight fabrics with plenty of drape, such as cotton lawn, viscose and rayon, to create feminine floaty sleeves.

The clear step-by-step instructions will take you through sewing bust darts, constructing a simple top or dress, finishing a neckline, adding a simple hook and eye closure (so no fiddly fastenings, hurrah!), and inserting flared and fluted sleeves and hemming them by hand or machine.

Celebrate the season of the sleeve with us and share your statement sleeves using #simplysewingmag – we'd love to see!

YOU WILL NEED

■ Fabric:

Dress: 115cm (45in) width fabric x 3m (3¼yds);
140cm (55in) width fabric x 1.8m (2yds) for all sizes

Top: 115cm (45in) width fabric x 3m (3¼yds);
140cm (55in) width x 2m (2¼yds) for all sizes

■ Hook and eye

■ Matching thread

FABRIC SUGGESTIONS

- Light to medium weight fabrics such as cotton, cotton lawn, crepe and crepe-style fabrics, viscose and rayon.

GETTING STARTED

First, pre-wash and dry your fabric according to the care instructions to allow for any shrinkage. Unfold the pattern sheets included in the pattern envelope and find the line style for your size on the pattern pieces using the key provided. Follow these lines to cut your pattern pieces out – it can be helpful to mark your size with a highlighter before cutting. Turn to our guide on page 91 for more tips, plus a glossary of key terms.

Read through the instructions in the pattern envelope before you start sewing, and make sure you do all the steps in the correct order. Get your sewing kit ready so you have everything you need to hand, press your fabric to ensure accurate cutting out, and you're ready to start on the fun part – sewing your Mia top or dress.

TWO SLEEVE OPTIONS

Choose from flared or fluted sleeve styles.

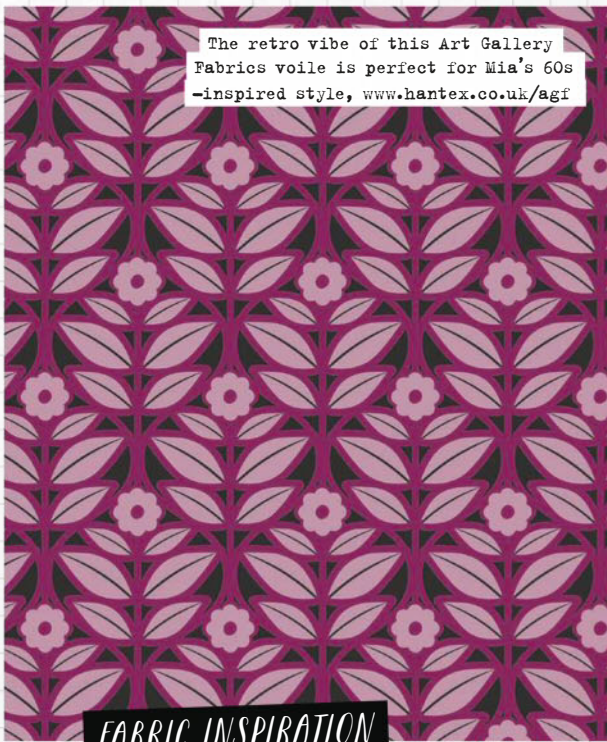
TWO-IN-ONE DESIGN

Make as a knee-length shift dress or feminine blouse.

TIMELESS STYLE

The dress and the top have a classic shift silhouette.





The retro vibe of this Art Gallery Fabrics voile is perfect for Mia's 60s-inspired style, www.hantex.co.uk/agf



Branch Silhouette Blue, www.hantex.co.uk/agf



Specks of Rambutan, www.hantex.co.uk/agf



Bonny, www.hantex.co.uk/cloud9

FABRIC INSPIRATION

STATEMENT STYLE

Don't be shy with choosing bright hues and eye-catching designs for your Mia. Statement sleeves = statement prints!



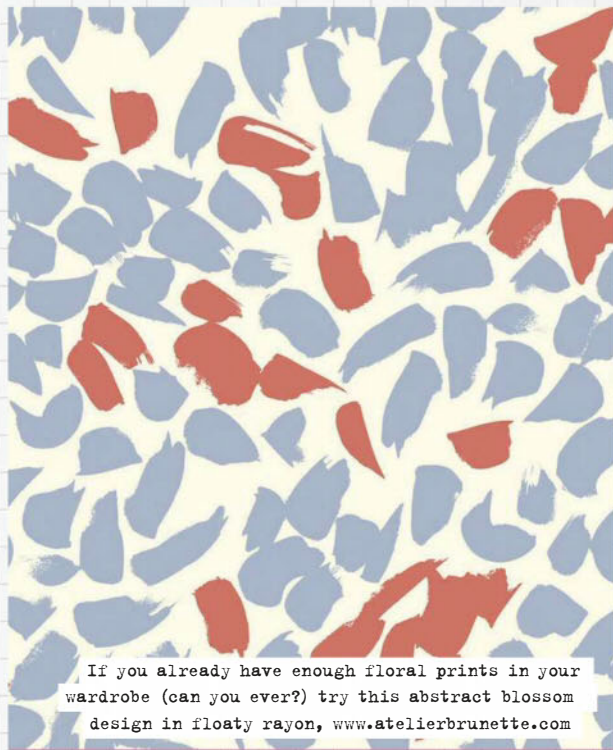
Spherical Buds Peach, www.hantex.co.uk/agf



Limestone Feel Indigo, www.hantex.co.uk/agf



Sparkle Melba, www.atelierbrunette.com



If you already have enough floral prints in your wardrobe (can you ever?) try this abstract blossom design in floaty rayon, www.atelierbrunette.com

WEAR IT WITH

CHERRY RED

Embrace 2017's boldest trend yet: head-to-toe scarlet.

We'll never get bored of a classic red manicure, £1.75, www.asda.com



Let the prints do the talking with subtle sparkle, £6, www.apricotonline.co.uk

Printed trousers are perfect for those I-don't-know-what-to-wear days, £26, www.mandco.com



Go matte for a modern way to wear the tried-and-tested red lip, £10, www.marksandspencer.com



Upgrade your everyday bag with a bright tote in a timeless style, £32, www.mandco.com

A textured finish gives a plain pair of kicks a luxe feel, £12, www.asda.com



MY SEWING WORLD

by Lisa Comfort

After welcoming a new arrival this spring, Lisa Comfort reflects on how motherhood has changed her work-life balance and sewing style.

Well, life has changed a little bit since I was last here! At the beginning of May we welcomed our beautiful little girl, Jasmine, into the world, and since then it's all been about getting to grips with having a tiny little person in our lives. It's wonderful being a family of four – I say four because obviously our dog Poppy is still included! I'm currently writing from maternity leave whilst Jasmine is napping. I've been surprised to find my time away from the office has been easier than I thought it would be. In many ways Sew Over It is my first baby, but now we have a real munchkin in the house I've been surprised by how easy I've found it to switch off from work. I guess I just don't have the headspace for everything. I'm lucky to have a brilliant team who are running the show at the moment, and having complete faith in them has allowed me to relax. And I'm sure any new mother will tell you that you gain a lot of perspective when you have a baby. I definitely feel that has been a gift from Jasmine!

KEEPING CREATIVE

One work thing that I have been getting stuck into, however, is dreaming up ideas for new sewing patterns. I have a lot of time in the wee hours when I'm feeding Jasmine to browse Pinterest, flick through magazines and devour films. When it's time to go back to work I'll definitely be rejuvenated with creativity.

In terms of sewing, it's been a slow start. I did lots of sewing during my pregnancy because it was important to me that my wardrobe was still mostly handmade. I really wanted to retain my style and still feel like me, even as I was getting bigger. Since then my productivity has suffered



Browse Sew Over It patterns, fabrics and more at www.sewoverit.co.uk

"I'm lucky to have a brilliant team who are running the show."

Life has been a bit of a balancing act over the last few months... in more ways than one!



Here she is! We welcomed our little girl Jasmine to the world in May.



These pretty pastel prints will be sewn up into a keepsake quilt.

"I'm favouring quick projects at the moment. Baby clothes are perfect."

a little dip, but I'm able to fit in more sewing time than I expected. I'm lucky Jasmine is a good sleeper, so I'm still squeezing in a dose of dressmaking.

QUICK QUICK SEW

Because I can't commit to long stretches at the sewing machine, I'm favouring quick projects at the moment. Baby clothes are perfect because they're so small. Sewing for Jasmine has really opened my eyes to a whole new world of indie pattern designers – there are so many to choose from for children. Jasmine is going to have such a stylish wardrobe!

Another project that I've been able to get stuck into is a little patchwork quilt I started for the baby whilst I was pregnant. I picked the prettiest pastel colours and can't wait until it's finished so I can wrap Jasmine up in it. I have a new respect for quilters though – everything takes ages! Still, it'll be a labour of love that hopefully she'll be able to enjoy for years. That's the great thing about quilts – you don't grow out of them! As for me, my selfish sewing has slowed down. I made a lot of clothes for my pregnancy, many of which I can alter so they will fit me going forward. Most of the time, all it takes is leveling off the hem and then they'll be ready to wear again.

Despite not doing too much sewing for myself, I have worked out what my wardrobe needs. Because my tummy isn't up to high-waisted clothes at the moment and I'm breast feeding, loose shapes and button-ups are my friends. I'll be living in Alex Shirts and Kimono Jackets this summer. Sadly Betty will be staying in my wardrobe for a little while longer!



Jasmine is going to have such a stylish handmade wardrobe!



I'll be getting plenty of wear out of these super-comfy Kimono Jackets this summer.

Keeping me inspired...

This month, it's all about the simple things in life. Since Jasmine came along my life has slowed down masses - and I am really relishing it! I take a daily walk through my favourite park in Hackney and actually have time to stop and notice things. My phone is full of photos of flowers! My favourite children's pattern brand at the moment is Puperita Patterns, which I found on Etsy. Their designs are so sweet - I'll definitely be making their super cute Happy Frog romper for Jasmine for summer.



It's been lovely to slow down and relish the simple things.



Poppy has been enjoying daily walks in our favourite park.





Maternity hack with
SEW OVER IT

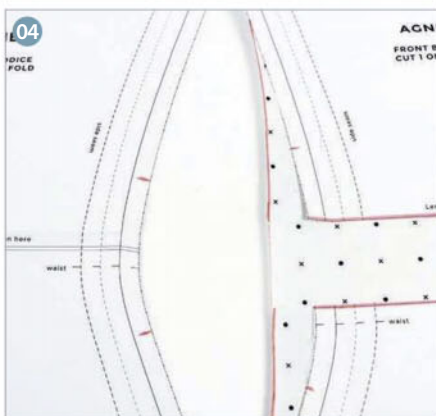
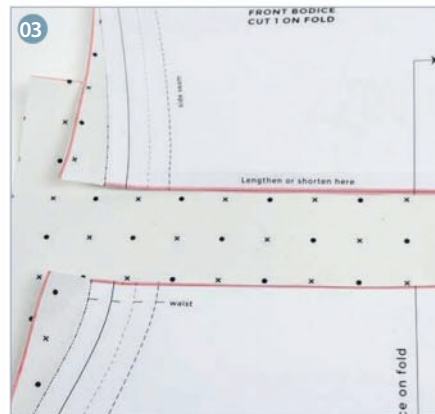
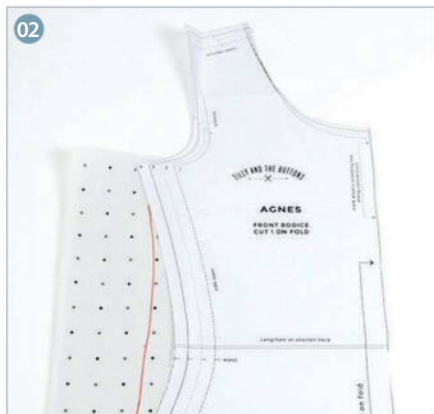
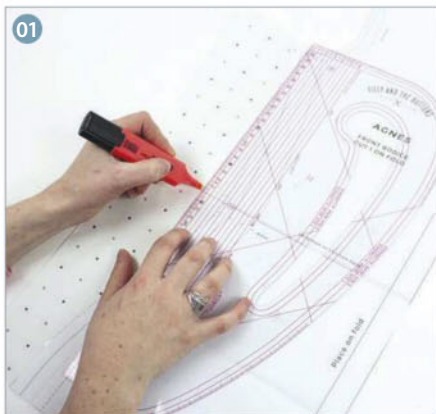
In part one of **Lisa Comfort's** maternity pattern hack series, she makes an everyday jersey dress using a simple top pattern.

**MATERNITY
HACK**
PART ONE



PART ONE

- Lengthen a pattern
- Adjust a waistline
- Alter side seams for the perfect fit



YOU WILL NEED

- Fabric: jersey, see instructions for details
- Pattern for a jersey top
- Elastic: 5mm (1/4in) width x 50cm (20in), (optional)
- Stabilising tape: 8cm (3 1/2in) width x 25cm (10in)
- Pattern paper
- Basic sewing kit

CUTTING OUT THE BASIC PATTERN

Step one Look at the size chart on your chosen pattern (we used the Tilly and the Buttons Agnes pattern) then measure your bust size. Cut out the pattern size that best corresponds to this measurement. If you are between sizes, choose the next size up.

Step two You will need to work out the fabric quantity you need from your newly adjusted pattern, so don't buy any just yet.

STRAIGHTENING THE SIDE SEAMS

Step one As the Agnes top is shaped at the waist, the first step is to straighten out the side seams. To do this, start by attaching pattern paper to the side seam of the front piece.

Step two Find the smallest part of the waist and mark 2cm (3/4in) horizontally from this. **01**

Step three Using a ruler or patternmaster, redraw the side seam, aligning the underarm, the new waist point and the hem with a much shallower curve. **02**

Step four Repeat this to adjust the back pattern piece in the same way.

LENGTHENING THE TOP

Step one We have changed this Agnes top into

a dress, so first you need to decide the length you want your dress to be. Measure from your shoulder down to that length.

Step two Cut along the lengthen/shorten line then stick the front pattern piece to a larger piece of pattern paper. Extend the centre front and the side seam until they reach your desired dress length. **03**

Step three To create the side seams for the dress, lengthen the newly drawn side seams on the top straight down. **04**

Step three At the desired length, draw a hem perpendicular to the centre front, including a 1.5cm (5/8in) hem allowance.

Step four Repeat this for the back pattern piece, using the same measurements.

ADDING EXTRA ON THE WAIST

Although jersey stretches, you will find you still need to add some room to the front of the dress to accommodate the bump.

Step one Cut along the shorten/lengthen line on the front pattern piece and separate.

Step two Insert a piece of pattern paper between the two pieces, adding 15cm (6in) of room for a third trimester-sized bump or you can adjust this accordingly.

Step three When you're happy with the extra room, stick the pieces together, redraw the side seam line and cut out the new pattern.

Step four Add two new notches to the front dress, 5cm (2in) either side of the shorten/lengthen line you cut along.

Step five Add two new notches to the back dress pattern, 5cm (2in) either side of the shorten/lengthen line, to match the front piece notches. **04**

CALCULATING FABRIC QUANTITY

Step one The Agnes top includes several sleeve options, so choose the one you prefer.

Step two Measure your pattern pieces to work out how much fabric you need to buy.

CUTTING OUT

Step one Fold the fabric in half lengthways.

Step two Lay the front piece along the fold line and pin into place. Repeat with the back piece below the front piece.

Step three Position the sleeve and neckband pattern pieces on the fabric matching the straight of grain and pin into place.

Step four Mark all notches with tailor's chalk or tacking stitches, then cut out the pieces.

SEWING THE DRESS

Step one On the front piece, sew two rows of gathering stitches between the notches you drew on the pattern. Keep these within the 1.5cm (5/8in) seam allowance. **05**

Step two Following the instructions included with the Tilly and the Buttons Agnes pattern, stabilise and stitch the shoulder seams, stitch the neckband in place and attach the sleeves.

Step three With right sides (RS) together, lay the front dress on top of the back dress matching the raw edges of the underarms, sleeves and dress hems.

Step four Match up the notches on the side seams, then gather the front piece by pulling the gathering stitches and adjusting the gathers evenly between the notches. Pin the gathers into place, using plenty of pins to hold it securely. **06**

Step five Sew the whole side seam with one continuous line of stitching.

Step six Repeat to gather and stitch the other side of the dress.

FINISHING OFF

Step one Overlock or machine zigzag the seam allowances together and press.

Step two Following the rest of the instructions for the Agnes pattern, finish the dress with a neat hem on the sleeves and lower edge.

NEXT MONTH

Make a maternity shift dress with a waist tie using Sew Over It's Ultimate Shift Dress.



GET 20% OFF TILLY'S WORKSHOP

Get 20% off Tilly and the Buttons' Learn to Sew Jersey Tops online workshop, which includes a PDF or printed copy of the Agnes pattern, using code SIMPLYSEWING. Code valid until midnight GMT on 24 August 2017. Sign up at www.tillyandthebuttonsworkshops.com



threaders™

BY CRAFTER'S COMPANION

SEWING ESSENTIALS



Threaders Template & Stencil range

Includes template sheet and co-ordinating stencils for inking, appliqué, quilting, embroidery, paper piecing and so much more!

AVAILABLE
NOW

QUICK FIX

Raid your stash of pom pom trims and whip up our quick-sew summer scarf in super-soft cotton batiste.

MAKE YOUR OWN IN AN AFTERNOON!



We used a lightweight cotton batiste fabric, Wilder (ref: CGFR158912), from Cloud9's Frolic collection. For stockists visit www.hantex.co.uk/cloud9

YOU WILL NEED

- Fabric: lightweight, 100x100cm (40inx40in)
- Pom pom trim: 2m (2¼yds)
- Basic sewing kit

CUTTING OUT

Step one Fold the square piece of fabric in half by folding opposite corners together diagonally. Press it to create a crease, open it out and cut along the crease line.

Step two You will now have two triangles, so you can make two scarves if you like.

HEMMING THE TRIANGLE

Step one Fold the raw edges under by 5mm (¼in) to the wrong side (WS) and press.

Step two Turn the edges under by 1cm (¾in) to the WS all the way around and press.

Step three Machine stitch the hem into place along all the three edges.

ATTACHING THE POM POM TRIM

Step one The pom pom trim is only stitched to the two shorter sides, not the long diagonal one. Place the pom pom trim right side (RS) down on top of the WS of the edge of the scarf.

Step two Make sure that the pom poms sit proud of the edge and that the tape of the trim can't be seen from the RS for a neat finish.

Step three Turn under and trim the short ends to fit at the edges and then pin into place.

Step four Tack the trim to the hem as it's much easier to stitch the trim in place neatly.

Step five Hand-stitch the pom pom trim in place with small, neat slip stitches which can't be seen from the RS.

FINISHING OFF

Step one Press your scarf to finish.





THE DROP SET

Update your weekend wardrobe with **Madeit Patterns'** Drop Set, a casual knit dress or tunic top in UK sizes 6-18 with a flattering asymmetric shape.



THE DROP SET

As much as we love sewing up special frocks, we want to fill our wardrobe with me-mades for all occasions, from dressed-up dinners to dinner-and-a-movie at the weekends.

This issue's Drop Set by Madeit Patterns (www.madeit-patterns.com) is in the latter category – designed for stretch knits and so comfy it's like wearing secret pyjamas, this staple jersey style nails the luxe-casual trend with its unique asymmetric drape and can be made as a dress or tunic top in UK sizes 6-18 (US 4-16, EUR 34-46). Olu and Anna of Madeit Patterns say: "It's an addictive sewing experience; quick, easy and enjoyable. Once you Drop, you won't stop." *Psst! Read our full interview with the Madeit duo on page 56.*

Never sewn with knits before? No problem! The clear step-by-step instructions will take you through working with stretch fabrics, how to adjust the pattern for the perfect fit, constructing the dress and top, attaching the neck binding (with two different methods to choose from to suit your skill level), adding the sleeves and neat hemming.

Share your Drop dress or top with us using #simplysewingmag – we'd love to see!

YOU WILL NEED

■ Fabric:

Dress: 115cm (45in) width fabric x 2.5m (3yds);
150cm (60in) width x 2m (2¼yds) for all sizes
Top: 115cm (45in) width fabric x 2.35m
(2¾yds); 150cm (60in) width x 1.9m (2¼yds)
for all sizes

- Clear elastic: 5mm (¼in) width x 1 metre (1yd)
- Matching thread

FABRIC SUGGESTIONS

- Medium weight stretch knit fabrics such as viscose/elastane or a true knit.

GETTING STARTED

First, pre-wash and dry your fabric according to the care instructions to allow for any shrinkage. Unfold the pattern sheets included in the pattern envelope and find the line style for your size on the pattern pieces using the key provided. Follow these lines to cut your pattern pieces out – it can be helpful to mark your size with a highlighter before cutting. Turn to our guide on page 91 for more tips, plus a glossary of key terms to refer to while you're sewing your Drop Set.

Read through the instructions in the pattern envelope before you start sewing, and make sure you do all the steps in the correct order. Get your sewing kit ready so you have everything you need to hand, press your fabric to ensure accurate cutting out, and you're ready to start sewing!

NEW SKILLS

The pattern includes two methods for attaching the neck binding for a neat finish.

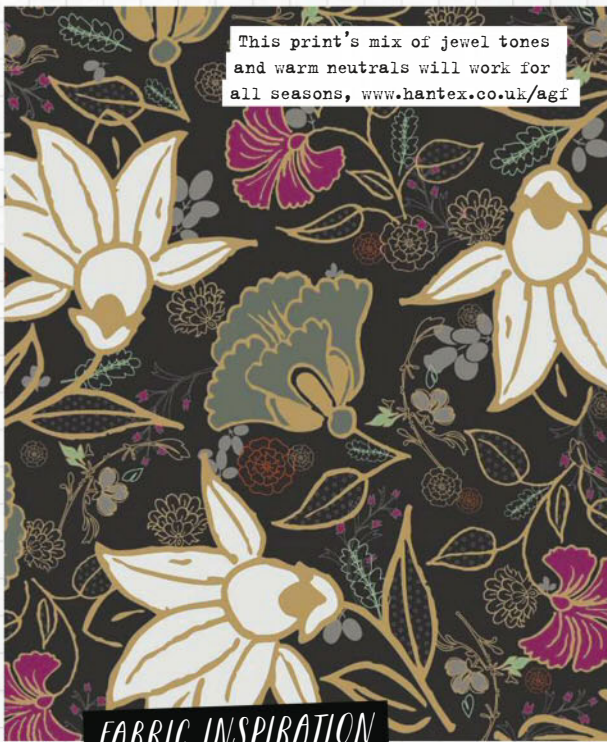
TWO LENGTHS

Make as a casual slouchy dress or tunic-length top.

UNIQUE SHAPE

The asymmetric style gives the dress and top a flattering drape.





This print's mix of jewel tones and warm neutrals will work for all seasons, www.hantex.co.uk/agf



Springs Sun, www.hantex.co.uk/agf



Panache Profundo, www.hantex.co.uk/agf



Specks of Carambola, www.hantex.co.uk/agf

FABRIC INSPIRATION

PATTERN PLAY

This style's asymmetric silhouette is ideal for experimenting with prints, from geometrics to stripes. Let's play!



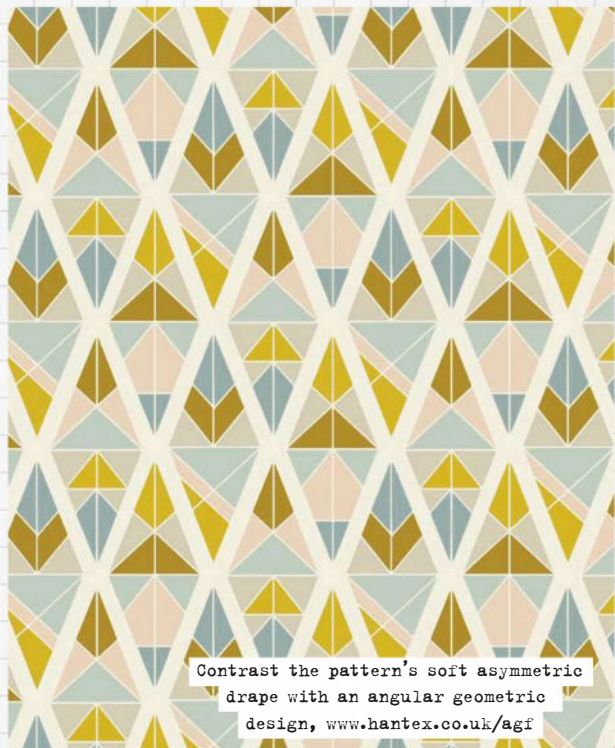
Frilly Flutters Mist, www.hantex.co.uk/agf



Plumage Poppy, www.hantex.co.uk/agf



Stripe Navy, www.hantex.co.uk/cloud9



Contrast the pattern's soft asymmetric drape with an angular geometric design, www.hantex.co.uk/agf

WEAR IT WITH

FIFTY SHADES

Layer up different neutral hues for an effortless weekend look.

Swap your classic nail colours for on-trend steel grey, £6, www.marksandspencer.com



Throwback to the 1970s with a minimal, modern take on mix-and-match wooden beads, £32, www.oliverbonas.com



Add interest to a simple outfit with a multi-textured bracelet, £16, www.oliverbonas.com



No need to switch bags – this camel tote is a wear-with-anything staple, £45, www.oliverbonas.com

Denim trends may come and go, but our fave high-waisted skinnies are forever! £30, www.very.co.uk



Dress up a casual look for day to night with these block-heel beauties, £80, www.dunelondon.com

Europe's leading patchwork
and quilting show

The Festival of Quilts 2017

10th – 13th August

Hall 7, 8 & 9

NEC, Birmingham, England

A celebration of quilting with over 300 exhibitors offering essential supplies, extraordinary galleries from international artists and over 1600 quilts on display.

**Ticket Offer: Quote SIMPSEW
for £2.50* OFF!**

* Discount valid on adult tickets in advance (£1.00 off concessions).
Terms and conditions and £1.50 fulfilment fee applies.

For more information call: 0844 581 1289
(+44 121 796 6347 from outside the UK)

www.thefestivalofquilts.co.uk

Workshops in association with

Hamline 
CROVERS

UPPER
STREET
EVENTS

 twistedthread

 Quilters' Guild



The festival of
QUILTS
the festival of quilts

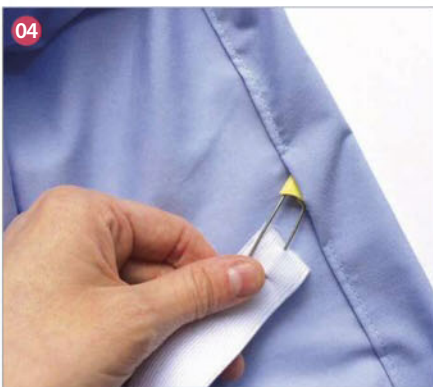
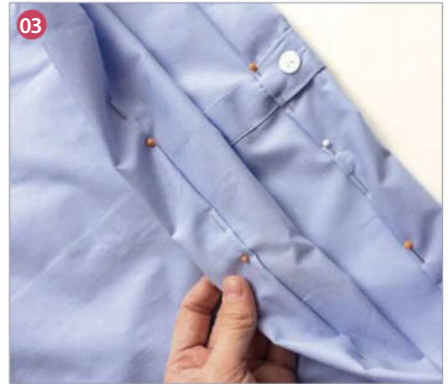
Image: Helen McBride Richter – thirty four?

PLAY IT COOL

Be a cool customer on hot days in this strapless sundress by **Jennie Jones**, made from a man's shirt.



TRANSFORM IT!



YOU WILL NEED

- One oversized shirt
- Elastic: 2.5cm (1in) width x 2m (2¼yds)
- Basic sewing kit



Use the biggest shirt you can find – we used an 18-inch neck shirt for a UK size 10 dress.

CUTTING THE SHIRT

Step one Trim off the collar and sleeves from your shirt. **01**

Step two Tidy up the armholes by sewing a line from the open top and down to the side of the shirt, keeping the sides at the top straight. Stitch close to the edge to retain as much fabric as possible at the sides. **02**

MAKING THE CASING

Step one Fold the top cut raw edge over by 2.5cm (1in) to the wrong side (WS) and press.

Step two Turn over again to the WS by the same amount to make a double hem, then press and pin in place. **03**

Step three Starting at the back, stitch the casing in place near the bottom edge of the fold, leaving a 5cm (2in) gap for feeding the elastic through later.

ADDING THE ELASTIC

Step one Take the elastic and wrap it around your chest and under your arms but above the bust. Pull so it is tight but not uncomfortable then cut to fit, allowing an extra 2cm (¾in) to overlap and join the ends together.

Step two Attach a safety pin to the end of the elastic then feed it through the opening in the casing and all the way around. **04**

Step three Overlap the ends of the elastic by

2cm (¾in) and sew together securely. **05**

Step four Slip stitch the opening closed.

MAKING THE EMPIRE LINE

Step one Take the elastic and wrap it around your rib cage under your bust. Pull so it is tight but not uncomfortable then cut to fit, allowing an extra 2cm (¾in) to join the ends together.

Step two Make a loop with the elastic, overlapping the ends by 2cm (¾in) and making sure you don't twist the elastic.

Step three Sew the two ends together securely as you did before.

Step four Try the dress on and measure the distance from the top to under the bust. Take off the dress, turn inside out and mark where the elastic will go on the WS with a pencil. **06**

Step five Pin the elastic hoop in place using only a few pins just to stop the elastic moving around whilst you sew.

Step six Sew the elastic into place just along the top edge, pulling it as you sew so the fabric gathers.

FINISHING OFF

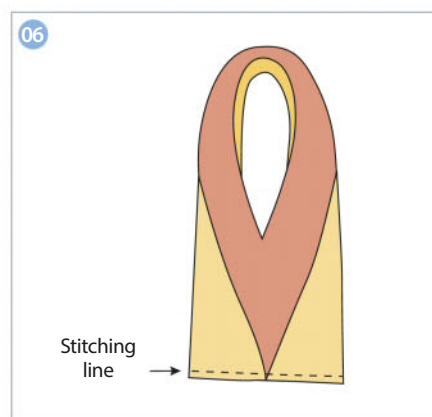
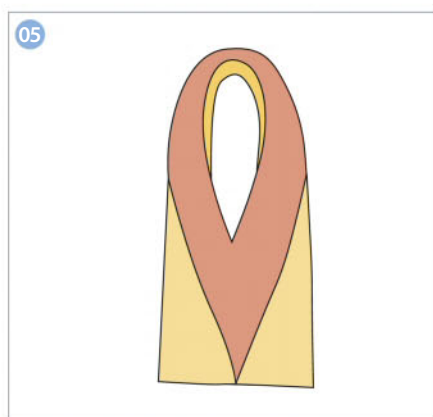
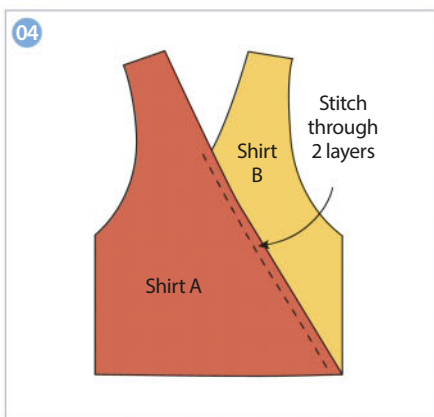
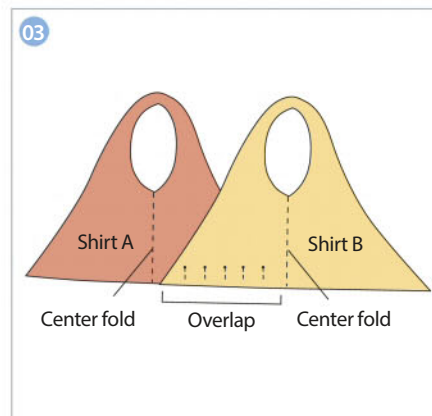
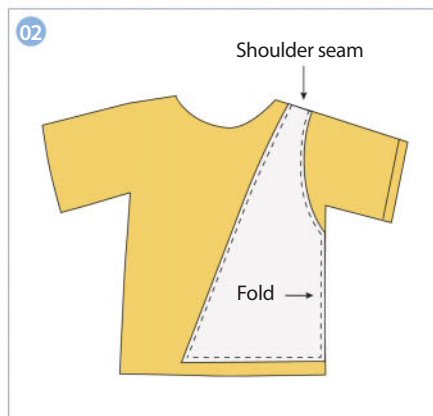
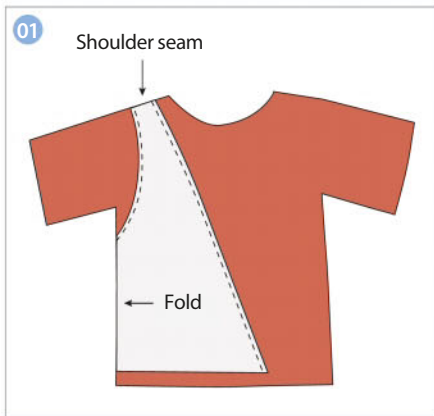
Step one To finish, pin the placket down just in the bust area of the dress between the two loops of elastic.

Step two Topstitch to hold it in place to finish your dress.



GOOD AS NEW

Upcycling enthusiast **Jenelle Montilone** shows you how to use two old tees to whip up a new colour-block tote.



YOU WILL NEED

- 2 large T-shirts
- Basic sewing kit

NOTES

- Use a 1cm (3/8in) seam allowance unless otherwise stated.
- You will find the template needed on the pull-out pattern sheet provided with this issue.

CUTTING OUT

Step one Lay one of the T-shirts (label this T-shirt A) flat on your work surface with the front of the T-shirt facing up. Smooth out any creases to make sure that your cut edges will be even, otherwise you'll end up with jagged edges. Run your hand over to make sure all creases are smooth on the back layer too.

Step two Trace around the template and cut it out to make your triangle pattern piece.

Step three Place the pattern onto your flat T-shirt A so that it sits on the shoulder and side seam of the T-shirt as marked on the pattern and shown in the diagram, then pin it into place. ⁰¹

Step four Cut through both layers of the T-shirt, keeping the shoulder seams and the side folds intact. Using a rotary cutter to do this will keep the T-shirt still and flat, but you can use scissors instead if you cut carefully.

Step five Repeat this with the other T-shirt (label this T-shirt B) but turn the pattern over so it is in reverse and place it on the opposite shoulder and side seam to T-shirt A. Pin it into place and cut around it as before. ⁰²

LAYERING THE PIECES

Step one Open out piece A and lay it flat, right side (RS) down. You'll notice a subtle crease line just below the arm cut-out. Use that as a visual marker for the centre fold. If there is no crease then fold the piece in half and lightly press one.

Step two Open out piece B and lay it on top of piece A with RS down and with the edge of piece B at the midpoint of piece A.

Step three Match the bottom hems and pin them together along the bottom where one piece overlaps the other. ⁰³

Step four Fold piece B in half on top of itself, then fold piece A over the top of piece B.

Step five Pin the two pieces together along the bottom where piece A overlaps piece B, through the top two layers of fabric only.

SEWING THE BAG TOGETHER

Step one Pin the two pieces together through the top two layers only along the diagonal edge of piece A, from the hem up to the V at the top of the overlap.

Step two Using a coordinating thread and

removing the pins as you go, sew a straight line through the two layers of the T-shirts from the V down to the bottom on one side of the bag. Remember to only sew through the two layers of pieces A and B so you are just stitching the front of the bag. ⁰⁴

Step three Turn the pieces over and repeat the pinning and stitching on the other side to join the piece for the back of the bag.

FINISHING THE BAG

Step one Turn the bag WS out and match up the bag handles, which were originally the T-shirt armholes, so that they create an arch facing you.

Step two Carefully lay the bag onto your work surface so that the bag has been moved to look more like a colour-blocked V. ⁰⁵

Step three Pin the bottom hems together and sew closed through all four layers of pieces A and B. ⁰⁶

Step four Turn the bag RS out, give it a quick press to flatten the seams and you're ready to shop.



This triangle tote bag project is one of 28 T-shirt upcycling ideas featured in *The Upcycled T-Shirt* by Jenelle Montilone, published by Stash Books (£16.99, www.ctpub.com)

Kirstie Allsopp
presents

The Handmade Fair

15-17 September 2017

The Green at Hampton Court Palace

Join Kirstie Allsopp, Sophie Conran and Annie Sloan for a weekend of inspiration and creativity. Try wirework, calligraphy, or machine sewing in hands-on workshops, shop for unique handmade products from 350 sellers, and tickle your tastebuds with delicious food and drink.

Save £3
and get a
FREE Jewellery
Maker kit worth £20

Quote
SIMPLY4



Book tickets today at thehandmade.com

In association with

Mollie
MAKES

Official partners

Annie Sloan

SWAROVSKI
CREATE YOUR STYLE



Historic Royal Palaces
Hampton Court Palace



The Handmade Fair



@handmade



The Handmade Fair



@handmade

Offer applies to adult Full Experience tickets, and tickets cost £29 + BF (usually £32 + BF). Offer closes 11.08.2017 or when sold out. Kit includes all you need to make your own piece of jewellery, and will be collectable from the Mollie Makes Café at The Handmade Fair



The Ziggy Top, Anna's debut pattern for Madeit, is what first attracted business partner Olu to the brand. And the rest is history!

MADE FOR LIVING

Adorably chic clothes designed for children's rough and tumble? Anna and Olu of Madeit Patterns understand the value of sewing patterns that allow for plenty of fun.

You may have spotted the Madeit Patterns duo on our Pinboard pages. With deceptively simple designs that make up versatile collections, they devise gorgeous garments we can't wait to get sewing. As so much of their output is focussed on kids, wearability is key, coupled with an unwavering enthusiasm for making. The two bright minds behind the brand, Anna Bruce and Olu Falola, each came to sewing in their own time, and their own way. "I was out shopping with my sister when I was in my late 20s," Olu recalls. "She spotted

a cute denim bag upcycled from a pair of jeans. It was basically a pocket made into a bag with a zip at the top and a long strap. My sister was considering buying it and I told her not to because, 'I could make that'. As I'd never sewn before, she thought it was quite hilarious and replied 'Go on then.' Not one to resist a challenge, a couple of weeks later I presented her with a cute little denim bag similar to the one we saw in the shop."

LAYING THE FOUNDATIONS

Anna's route in began somewhat earlier. "My

mum was always sewing when I was a child," she says. "Growing up with this, I think I just thought sewing was a normal thing to do and I used to love making clothes and clothes patterns for my dolls." As she grew older, Anna enjoyed making clothes from her mum's *Burda* magazines. "Then, as I gained confidence I started to modify them to make them exactly how I wanted by changing the lengths and experimenting with different neck shapes and sleeve designs." She may not have been aware of it at the time, but Anna was laying the foundation for her

career. "It wasn't until I left school and couldn't decide what to do that someone suggested fashion to me as I was always making clothes," she says. "Weirdly I had never considered it before. I enrolled on a BTEC National Diploma in Fashion at Newcastle college. I absolutely loved it and it was then that I knew I wanted to go on and be a creative pattern cutter."

Anna went from there to Manchester Metropolitan Uni, and four years later left with an honours degree in Fashion with Technology. "Since then I have worked in men's tailoring and as a womenswear pattern cutter for several large high street retailers," she says. "I've been technical manager for a childrenswear brand and been involved in the set up of a new womenswear company. Most recently I freelanced for a New York-based childrenswear brand as a creative pattern cutter and production technologist."

It wasn't until 2008, many years after her bag-sewing addiction hit, that Olu tried her hand at sewing clothes. "As a 1st birthday gift for my daughter,

a friend bought me a sewing pattern, Butterick 3846, a cute cross-back top that you pull on over the head," she says.

"I used it repeatedly until my daughter grew out of it, then I bought it again in the next size up." Olu struggled to find more patterns that ignited her interest, and for a time it seemed her passion for sewing might be fizzling out. "I stopped sewing for another five years." When her second daughter came along, Olu was determined to give sewing another chance, and "I soon discovered a whole world of PDF patterns and haven't looked back since."

THE START OF SOMETHING

At around that time, Anna made the leap of launching Madeit Patterns. Anna had always wanted to have her own business, but it wasn't until her son was born in 2011 that the idea sprung to mind. "I was a creative pattern cutter and technical manager for a brand of childrenswear so I knew that it wouldn't be possible for me to start anything whilst working there due to conflicts of interest," she says. "In 2013 when the company closed and I was made redundant I decided to start Madeit Patterns." Anna started selling on Etsy with only two patterns, and then at the end of 2014 launched the Urban range. "It was a bit of an anticlimax to start with as I had worked so hard on the designs, patterns,

tutorials and photoshoot but I didn't actually know how to tell people about it, let alone how to get anyone to buy it," she comments.

Fate intervened when Olu became a loyal customer. "I purchased The Ziggy top, Anna's very first pattern for Madeit, in October 2014," Olu says. "From this pattern it was evident to me that Anna was a cut above the rest. I had tried quite a few PDF patterns but Anna's seemed to be in another league."

Olu left some feedback in her Etsy shop. "From doing this I was entered into a draw, which I won." As her prize, Olu was given five of Anna's patterns. "I was blown away with the designs and quality," Olu exclaims. "Yet it seemed as though Madeit Patterns was very unknown amongst the sewing community. I thought Madeit could definitely do with more exposure, so I offered to run a blog tour for Anna. It was like the excitement of finding a cool new restaurant and wanting to tell everyone about it." The blog tour was a huge success. "During that tour I knew I wanted Olu to be the other half of Madeit

Patterns," says Anna. "I loved her style, her writing was full of personality and humour, she was an extremely talented graphic designer and her ideas were original and new. She was

exactly what the brand needed. A journey is much more fun when you have someone to go with you." Two days later, Anna asked Olu to be her partner at Madeit Patterns. It was a massive moment for the two of them.

"I had dreamt of one day owning my own pattern business, but with no pattern cutting experience, it was a dream in the very distant future," says Olu. "I had no idea this would be how my dream would become a reality. Of course my answer was a big, doubtless yes!"

The pair had never met each other in real life, and hadn't even spoken on the phone. "Anna was putting a lot of trust in me, but it's worked out even better than we imagined!" In August 2015, the new team launched their first pattern collection together: FOLD.

COMPLEMENTARY SKILLS

Having different areas of expertise makes the division of work duties straightforward. "As a graphic designer I see the importance of not just creating a business but building a brand which conveys quality, credibility and experience," says Olu. "I have a natural creative and curious mind, an eye for detail, I'm pedantic, and I like to find solutions that are not always obvious." A new pattern starts

"I HAD DREAMT OF ONE DAY OWNING MY OWN PATTERN BUSINESS, BUT WITH NO PATTERN CUTTING EXPERIENCE, IT WAS A DREAM IN THE VERY DISTANT FUTURE."



Above: Dream team Anna and Olu bring complementary skills to the pattern-making process. Experienced pattern cutter Anna makes the patterns, then Olu tests them: "Olu can see things as a customer would and her attention to detail is ridiculous."

ANNA AND OLU'S TOP STITCHING ADVICE



Anna: "Always sew your seam first before putting in an invisible zip. Oh, and always make a test garment first before cutting into your favourite, fabulous, special fabric."



Olu: "All the time, effort and detail you put into making a garment ensures you will love it more and wear it more. Make clothes that you will want to wear for years; make sure they fit, make sure the seam finishes are neat, add beautiful detail and use good-quality fabric."

life as an idea from either Anna or Olu, "or even our children. We brainstorm together and develop the idea." Once the seedling concept has taken root, Anna makes the pattern, which either she or Olu will then sew. "From this we work out problem areas and how it can be improved."

Once the amends have been incorporated, Anna grades the pattern. "She'll then sew the garment and take pictures for the tutorial," says Olu. "Anna will write the steps and add her images to the tutorial design template I created when I joined. I add our brand personality to the tutorials. All of our patterns come with a dollop of humour!"

Olu takes care to follow instructions precisely – as if she were a customer – and makes up the garment. "When I come across anything that could be clearer or I would do differently, I chat through it with Anna and we make all the necessary changes until we're both happy." Throughout this process, Anna will be working out crucial details, such as size charts, cutting guides and so on. "When we feel the pattern and tutorial are ready, we send it to our amazing team of

testers who usually have a week to sew up the pattern and give us feedback," says Olu. "Any amendments to the pattern will be done by Anna. And any amends to the tutorial will be done by me." Finally, Anna draws the garment illustrations and Olu does a photoshoot. Then it's job done – phew!

"It works really well because Olu can see things as a customer would and her attention to detail is ridiculous. Nothing gets past her," Anna adds. "I'm used to giving instructions to people who know what they're doing, whereas our tutorials are so detailed that a confident beginner could make the more intermediate styles. And that comes from Olu's experience."

The duo have found a rhythm which makes the workday a breeze. "I couldn't have asked for a better partner than Anna – we get on well and have the same sense of

"WHEN WE FEEL THE PATTERN AND TUTORIAL ARE READY, WE SEND IT TO OUR AMAZING TEAM OF TESTERS WHO USUALLY HAVE A WEEK TO SEW UP THE PATTERN."

humour," Olu says. "We laugh all the time, and support each other wholeheartedly." She adds: "I love that Anna has integrity. I believe in her talent and we share the same values, goals and visions." Anna believes their success of their working relationship is thanks to the fact they were business



Above and right: One of Anna and Olu's most successful designs to date has been The Groove Dress, a jersey swing dress for girls and adults, which the pair describe as "addictive" to make. Left: Japanese sewing books provide the duo with inspiration.





partners before becoming friends, “so there has always been a professional line that isn’t crossed, and we have respect for each others’ way of working and opinions.”

BREATHTAKING IDEAS

Notable triumphs to date include the Groove Dress, a swing dress for adults and girls. “Olu has great vision and style – I know that if she’s excited about something we’re onto a winner,” says Anna. “Olu loves the Groove Dress so much that she’s made about 19 of them, and our customers never stop at one either. Literally, as soon as one is finished they are planning the next one.”

Fabrics and techniques offer a wealth of creative possibilities. “I’m inspired by fabrics that I like, details I find interesting and shapes that I find challenging from a pattern-making point of view,” says Anna. “We also like the inside of our garments to look good so a lot of thought is put into the best way to finish seams and hems.” Current passions include the idiosyncrasies of stretchy fabrics. “We’re loving jersey, so have incorporated a couple of options for doing a bound neckline; an easy way and a more advanced method,” says Anna. “I can’t live without my overlocker but we take into consideration that a lot of people don’t have one so give an alternative that will achieve a professional finish.”

LONG-DISTANCE TEAMWORK

One of the biggest challenges is working in different cities. “We don’t share an office, because I live in Essex and Anna lives in Cheshire,” says Olu. “I have a tiny sewing room next to my daughter’s bedroom. It’s a wonder that she never wakes up with the sound of my sewing machine at 2am. On my desk I have my iMac, Bernina 350, second-hand Husqvarna overlocker, an A3 printer, my daughters’ homework and a heap of mess.” Anna is more nomadic. “If I’m sewing I work in my office, but anything computer-based can be anywhere from my kitchen table to a coffee shop.” Despite the separation, the pair find ways to stay in tune with each other. “We communicate daily (actually, hourly) via WhatsApp, email or phone,” says Olu.

Future plans include “developing more patterns for womenswear,” says Anna. “We have some great ideas.” Every design springs from the pair’s delight in sewing. “We don’t so much follow trends as concentrate on creating something that people will be able to add their own individuality to,” says Anna. “At the end of the day, we believe that’s what making your own clothes is all about.”

Written by Judy Darley.

Anna and Olu designed this issue’s Drop Set pattern on page 46. See more of their sewing patterns at www.madeit-patterns.com



Above: Madeit’s latest design goes back to Olu’s sewing roots: “We’re about to launch our first bag pattern, SLING. We’ve had a really good response from our testers.”



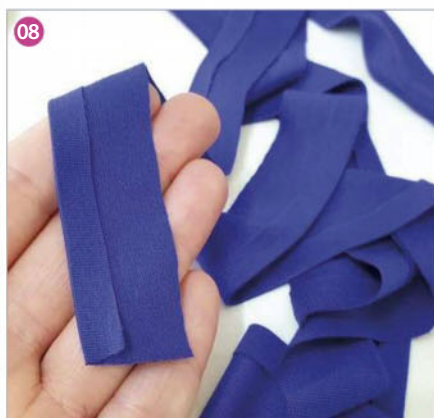
JERSEY SHORE

Go from beach to bar (or ice cream stall) with **Portia Lawrie's** made-to-measure jersey wrap-around dress.



PSST:

This would work as an everyday summer dress to layer with a plain vest top, too – just choose a drapery fabric with stretch.



YOU WILL NEED

- Main fabric: 1.5-3m (1¾-3¾yds) medium-weight jersey with 40-50% stretch
- Iron-on stabilising seam tape: see instructions for details
- Low-tack masking tape
- Basic sewing kit

FABRIC USED

- Milano viscose jersey, available from www.fabricgodmother.co.uk

NOTE

- Use a 1cm (¾in) seam allowance unless otherwise stated.

CALCULATING MEASUREMENTS

Step one Take your bust measurement (at the fullest part of your bust) and multiply this by 1.8. This is the width of your rectangle.

Step two The length of my rectangle is 110cm (43in). You can go up or down on this measurement depending on how long or short you want your wrap to be. **01**

CUTTING OUT

Step one Cut out your rectangle according to the measurements above. For UK size 6-10 you should be able to cut one rectangle from a 150cm (60in) wide fabric. For UK size 12 and up, you will need to cut two squares and stitch together to create your rectangle. **02**

Step two Cut two strips of fabric 3cm (1¼in) wide and 50cm (20in) long for binding the armholes with.

HEMMING THE EDGES

Step one Turn under the long edges of the rectangle by 1cm (¾in) to the wrong side (WS) and press. Use an iron-on stabilising tape under the turned-under edge when hemming knits to keep them neat. Now measure the perimeter of your rectangle to calculate how much tape you need to buy. **03**

Step two Turn under and press the shorter

edges in the same way, keeping the corners neat, and stitch into place.

Step three Give all the hems a good press. **04**

CUTTING THE ARMHOLES

Step one Lay out your rectangle with the long edge at the top.

Step two Stick a strip of low tack masking tape in the approximate position of the armhole and mark a horizontal line 3cm (1¼in) down from the top edge. **05**

Step three Mark a point on that line that is 6cm (2¾in) in from the side edge, this is the shorter one. This is the starting point of your arm 'slit'. **06**

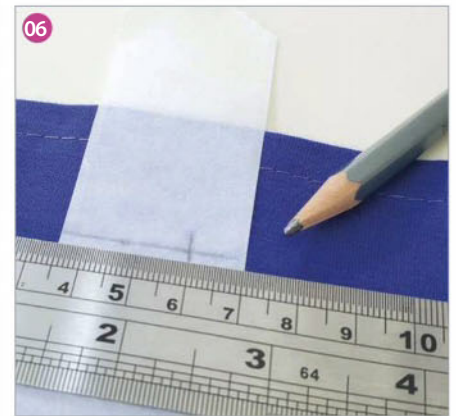
Step four Square a 23cm (9¼in) line down from this point, then cut along that line. The masking tape stops the jersey from slipping around while you're cutting and keeps it stable while you prepare the binding. **07**

MAKING THE BINDING LOOPS

Step one Turn and press under one of the long edges of one binding strip by 1cm (¾in) to the WS for the hem allowance. **08**

Step two Open the strip up flat again.

Step three Place the short ends of the strips right sides (RS) facing then stitch together to form a loop.



Step four Press that 1cm (3/8in) fold back under along one edge again. **09**

Step five Repeat this to fold, press and stitch the other binding strip to make a loop in the same way.

BINDING THE ARMHOLES

Step one Pin the RS of the raw unturned edge of one binding loop on the WS of one of the slit opening edges. Position it so the short end seam is in the centre of one of the slit edges for a neater finish. **10**

Step two Stitch in place all the way around.

Step three Press the binding upwards towards the armhole opening and grade the seam allowances to reduce the bulk.

Step four Fold the binding through to the RS of your main fabric piece.

Step five Pin the folded under edge in place to encase all the raw edges, right on top of the stitching line you just worked. **11**

Step six Topstitch the binding in place close to the folded edge. **12**

Step seven Repeat this to bind the other armhole slit with the other binding loop in the same way.

Step eight Give everything a really good press to finish. Now you're ready to pop on your favourite swimwear and head to the beach!



MORE IDEAS TO TRY

- 1** Make in a midi, maxi or mini length depending on how much you want to cover up.
- 2** Since this is essentially a rectangle of fabric, it can also be worn as a sarong.
- 3** Use stretch terry towelling to make your wrap for super absorbency straight out of the sea or pool.
- 4** Make a matching jersey turban or headband for a coordinated look.

PRINT
FABRIC AT
HOME



CREATE
HOME
DECOR



CREATE
YOUR OWN
JEWELLERY



MAKE
YOUR OWN
SCREENS

The Screen Sensation™ Home Screen Printing Kit has been specially designed to allow you to create professional results in your home.

For ideas, inspiration, tutorials, hints and tips please visit:

www.screensensation.com





SCREEN TIME

Use old jeans to make **Jessica Entwistle's** oh-so-Instagrammable travel pouch to fit your tech.

DENIM UPCYCLE

YOU WILL NEED

- Pair of blue jeans
- Lining fabric: see instructions for details
- Wadding: see instructions for details
- Matching thread
- Elastic: 2mm (1/8in) wide x 10cm (4in), black
- Button
- Basic sewing kit

NOTE

- Use a 1cm (3/8in) seam allowance unless otherwise stated.

CALCULATING MEASUREMENTS

Step one Measure your device all the way around with a tape measure, vertically and then horizontally. This way, your measurements will include the depth of your device.

Step two Add 4cm (1 1/2in) to each of these two measurements. Then divide each of these figures by two and round them up. This will give you a pouch that's snug without being too tight. This measurement also includes the seam allowances.

CUTTING OUT

Step one From the jeans, cut two pieces of denim to the measurements you calculated. If you cut them to include the jeans back pocket in the centre of one piece you will have an extra bit of storage space for USB sticks, earphones and other techy bits and bobs.

Step two Cut two pieces to the measurements calculated from the lining and the wadding. **01**

SEWING THE OUTER

Step one Pin one piece of wadding to the wrong side (WS) of one piece of denim.

Step two Sew together all the way around using a 5mm (1/4in) seam allowance.

Step three Repeat this with the other piece of denim and wadding.

Step four Pin the two denim/wadding pieces with the denim fronts right sides (RS) together.

Step five Sew together down one long side, along the bottom and up the other long side.

Step six Clip the bottom corners.

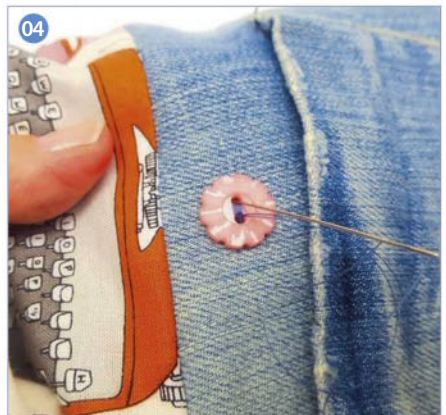
SEWING THE LINING

Step one Pin the two lining pieces RS together.

Step two Sew together down the two long sides and across the bottom, but leave an 8cm (3 1/2in) turning gap in the centre of the bottom seam.

Step three Clip the bottom corners. **02**

ATTACHING THE ELASTIC LOOP



Step one Press the seams open. Turn the denim outer RS out.

Step two Decide where you want the button to be on the front and cut a length of elastic long enough to make a loop to catch it, plus 2cm (3/4in) for the seam allowance. Remember to take into account the thickness of the denim/wadding piece and your device. Our button is sewn 1cm (3/8in) down from the finished top edge and we cut our elastic to 6cm (2 3/8in).

Step three Pin the elastic in a loop to the middle of the RS of the denim back piece, so that the loop ends stick out slightly over the fabric edge and the loop faces down towards the bottom.

Step four Sew into place with a 5mm (1/4in) seam allowance so that it will be hidden inside the main seams later.

ATTACHING THE LINING

Step one With your denim sleeve still RS out, place it inside your lining fabric so that they are RS facing. Line up the side seams and pin together around the top.

Step two Sew together at the top with a 1cm (3/8in) seam allowance. **03**

ATTACHING THE BUTTON

Step one Pull your denim sleeve RS out through the turning gap in the bottom then push the

lining into the denim sleeve.

Step two Mark where the button needs to be sewn in place on the denim sleeve front with an erasable pen by looping the elastic over.

Step three Pull the lining out again and sew the button in place with your hand inside the lining so that the button is sewn just to the denim and wadding and not through the lining fabric. **04**

FINISHING OFF

Step one Close the turning gap with either a slip stitch by hand or with a straight stitch using your sewing machine.

Step two Push the lining back inside then press well to finish.





Simply
Sewing
FRESH IDEAS WITH FABRIC

WORKSHOP

SEWING WITH LACE

Every issue, our sewists present classic projects and techniques.

Designer: **ZOE PATCHING**

LEARN THE TECHNIQUE

Lace is really popular at the moment. Whether it's trimming the hem of a summery top or layered over fabric to embellish the garment completely, lace is the trim of choice this season. Today, lace is largely machine made and is readily available online or from your local haberdashery, but originally lace would have been intricately made by hand with intertwined threads and bobbins.

TYPES OF LACE TRIM

Traditionally, lace was named after the region it was made, such as Chantilly and Honiton, with each region working different techniques, unique to the community. Today we're spoilt for choice by the variety of different lace trims we can get, and it can be overwhelming. Some of the most popular types of lace trim we found stacked on the haberdashery shelves were: insertion lace, edging lace, beading lace and entredeux lace. Before choosing, it's important to have a clear idea of how you will be using the lace, and with which type of fabric.

WAYS TO USE LACE TRIM

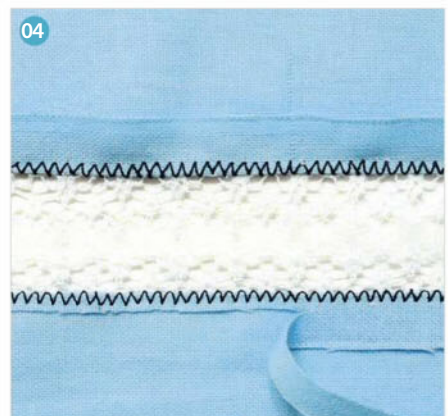
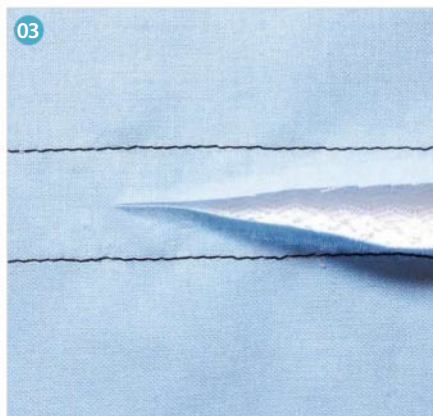
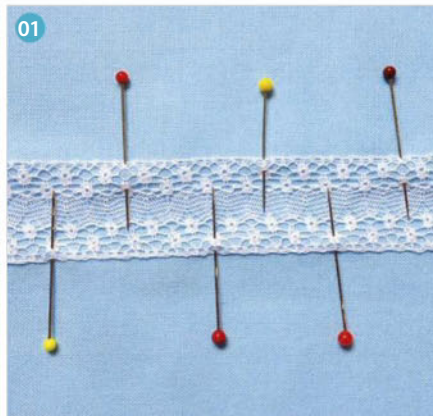
We're adding a delicate lace insert down the back of a short-sleeved blouse using insertion lace, which has a decorative band sandwiched between two selvedge edges. For adding a decorative lace edge, opt for an edging lace – this has one straight edge for hemming and one decorative scalloped edge. Beading lace has a series of openings or slits running along the centre for weaving ribbon through, while entredeux lace has a similar look to broderie anglaise. It consists of a narrow band of fine fabric sandwiching a central row of eyelets, and is often used to join lace edgings to fabric. If the fabric of your garment has stretch, choose a stretch lace so it will stretch with the garment.

BUYING LACE TRIM

Lace trims are bought off the reel usually at 10cm (4in) increments and can easily be cut with a pair of sharp scissors. Pattern repeats tend to be small, making it easy to pattern match if necessary. Buying an extra 20cm (8in) or so will mean you'll have ample for hemming plus extra to practice on.

BUYING LACE FABRIC

Lace fabric is usually bought off the roll as it is much wider compared to trims. Cutting out lace fabric can be less straightforward as pattern repeats are often larger and accommodating this when cutting out needs careful planning. Lace fabric also tends



to slip around, but good pinning with sharp pins and tacking stitches will really help to reduce this and make it easier to work with.

WORKING WITH LACE

Some lace has a definite right and wrong side but some can be tricky to identify. Whichever you choose, be sure to use the same side throughout. Keep track by marking the right side with tailor's chalk or a tacking stitch. Lace can be heavily starched – to soften it, soak it in hand-washing detergent. Check that the care instructions on both your garment and your lace trim are compatible. For the best results, wash your garment first, before adding your trim, to avoid shrinkage and puckering when you wash the finished item for the first time.

CARING FOR LACE

Cotton, polyester and metallic are some of the thread types which make up machine-made lace, and as each has different characteristics, care should be taken when it comes to working with

each type. Lace will benefit from being pressed, rather than ironed, before you start. Pressing is less likely to stretch and distort the lace, which can sometimes happen through ironing. Check the care instructions and make sure you use the correct heat setting on your iron – start on a low setting and work your way up until you find the right temperature. Try using a press cloth too to protect the delicate trim – a piece of cotton fabric is perfect. Simply place over the lace and press on top.

HOW TO MAKE A LACE INSERT

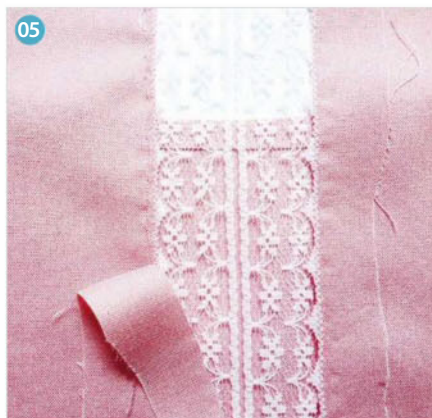
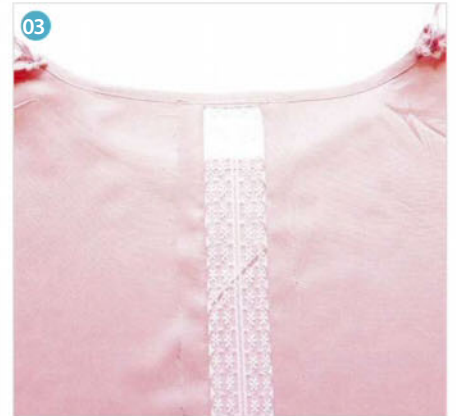
Step one Place the lace face up on the right side (RS) of the fabric. Pin, keeping both layers smooth. **01**

Step two Stitch along the lace edge, removing pins as you go. Repeat on the opposite side. **02**

Step three Place the fabric and lace face down, and very carefully cut along the centre of the fabric between the two stitched lines. **03**

Step four Press the cut seam open and work a small zigzag stitch to hold the fabric in place. Carefully trim the folded fabric away. Press to finish. **04**

ADD A LACE INSERT



YOU WILL NEED

- Blouse
- Insertion lace: to generously fit the length of your garment

NOTE

- Use the instructions on the previous page for preparing and working your lace insertion.

ATTACHING THE LACE

Step one Find the centre line of the back of the blouse and carefully unpick a section of the bias binding around the collar, enough to fit the width of the lace. With right sides (RS) facing up, match the centre lines of the blouse and lace together, and sandwich the end of the lace under the unpicked bias binding. Pin and hand sew the opening together with a neat backstitch. **01**

Step two With the insertion lace pinned smoothly in place along the centre of the back of the blouse, machine stitch a straight stitch along the lace edge, stitching from the edge of the bias binding down the complete length of the blouse. Leave the bottom end of the lace unfinished at this stage. **02**

CUTTING AWAY THE FABRIC

Step one Turn the blouse inside out, and using a sharp pair of embroidery scissors, carefully cut the fabric between the two stitched lines. Snip slowly and use your fingers to gently separate the two layers to prevent snagging or accidentally snipping

the lace. Trim the fabric back to the stitched line at the collar and hem. Press the seam open. **03**

Step two Make a double fold to the back of the blouse to hem the bottom of the lace and pin.

Step three Turn the blouse RS out, and pin the seam open. Zigzag stitch along the edge of the lace, over the straight stitch. This zigzag stitch will also stitch the hemmed lace along the bottom edge. We used a stitch width of 2 and a stitch length of 0.8. **04**

Step four Once both seams have a zigzag edge, the fabric will need to be cut away. Turn the blouse inside out and, with a pair of small embroidery scissors, trim away the fabric, taking care not to snip the stitches or lace. **05**

FINISHING OFF

Step one The final step is to press the seam to set the stitches, first on the wrong side (WS) and then again on the RS. Use a pressing cloth to protect the lace and check the heat setting beforehand. Here's how the lace insert looks, with black fabric behind to show off the pretty patterned lace. **06**

SUMMER

Try a subscription

Craft



5 ISSUES FOR £5
and then save 29%



5 ISSUES FOR £5
and then save 29%



5 ISSUES FOR £5
and then save 29%



5 ISSUES FOR £5
and then save 33%



5 ISSUES FOR £5
and then save 29%



5 ISSUES FOR £5
and then save 29%

Food and Travel



5 ISSUES FOR £5
and then save 23%



5 ISSUES FOR £5
and then save 23%



5 ISSUES FOR £5
and then save 27%

Homes and Gardening



5 ISSUES FOR £5
and then save 15%



5 ISSUES FOR £5
and then save 30%



5 ISSUES FOR £5
and then save 35%

Lifestyle



5 ISSUES FOR £5
and then save 25%



12 ISSUES FOR £1
and then save 46%



5 ISSUES FOR £5
and then save 29%



5 ISSUES FOR £5
and then save 25%

History



5 ISSUES FOR £5
and then save 33%



5 ISSUES FOR £5
and then save 33%

SALE

from just £1*



Science and Nature



5 ISSUES FOR £5
and then save 35%



5 ISSUES FOR £5
and then save 30%



5 ISSUES FOR £5
and then save 30%

Sport



5 ISSUES FOR £5
and then save 30%



5 ISSUES FOR £5
and then save 25%



5 ISSUES FOR £5
and then save 33%

Take advantage of our great trial offers and subscribe to your favourite magazine today. Or why not try a new one?

GREAT REASONS TO SUBSCRIBE:

- Subscriptions from just £1*
- Save up to 46% after your trial period
- Enjoy easy and convenient **delivery direct to your door**
- Never miss an issue
- Perfect summer reading

SEE OUR
FULL RANGE
OF MAGAZINES
ONLINE



YOUR TWO EASY WAYS TO ORDER:

Order online at

www.buysubscriptions.com/summer

or call our hotline: **0330 053 8660**[†]

**OFFER
CODE
SS17DPS**

*This offer closes on 31st August 2017 and is valid for UK delivery addresses and by direct debit only. The discounts shown are savings calculated as a percentage of the full shop price, excluding Radio Times which is calculated as a percentage of the Basic Annual Rate. For overseas rates visit www.buysubscriptions.com. Should the magazine ordered change in frequency, we will honour the number of issues and not the term of the subscription. You are free to cancel your subscription at any time - if you cancel within 2 weeks of receiving your penultimate issue you will pay no more than the trial rate, this is with the exception of Radio Times and Match of the Day, which you will need to cancel 3 weeks before the trial is due to end. Radio Times subscriptions are for 26 weekly issues (6 months) and Match of the Day subscriptions are for 3 months. The Basic Annual UK Subscription Rate of Radio Times is £42. This price is for 51 issues, which includes the Christmas double issue and a contribution towards postage. 'In The Moment' cover for illustrative purposes only. We reserve the right to limit the number of consecutive short term trial subscriptions a customer signs up for if their subscription is repeatedly cancelled during the trial. †Calls from landlines will cost up to 9p per minute. Call charges from mobile phones will cost between 3p and 55p per minute but are included in free call packages. Lines are open 8.00am - 8.00pm weekdays and 9.00am - 1pm Saturday's.





KIMONO CUTIE

Baby shower gifts don't come any cuter than **Ayda Algin's** reversible kimono and matching mittens.

YOU WILL NEED

- Main fabric: 40x112cm (16x44in)
- Lining fabric: 40x112cm (16x44in)
- Bias binding: 2cm (¾in) width x 2m (2¼yds)
- Ribbon: velvet, 5mm (¼in) width x 75cm (30in)
- Suede strip: 5mm (¼in) width x 50cm (20in)
- Stranded cotton: pink and green
- Basic sewing kit

NOTES

- Use a 1.5cm (⅝in) seam allowance unless otherwise stated.
- You will find the templates needed on the pull-out pattern sheet provided with this issue.

CUTTING OUT

Step one Trace the kimono front, kimono back, pocket and mitten templates and cut them out.

Step two From the main fabric cut:

Kimono front outer: cut one pair.

Kimono back outer: cut one on fold.

Mitten outers: cut two 10x12cm (4x4¾in).

Pocket: 8x8cm (3⅞x3⅞in).

Step three From the lining fabric cut:

Kimono front lining: cut one pair.

Kimono back lining: cut one on fold.

Mitten linings: cut two 10x11cm (4x4¼in).

Pocket: 8x8cm (3⅞x3⅞in).

MAKING THE KIMONO

STITCHING THE TEDDY

Step one Trace over the pocket and teddy template and cut out roughly outside the lines.

Step two Place the main fabric right front piece right side (RS) up then place the traced pocket and teddy underneath as shown. **01**

Step three Trace over the pocket and teddy using an erasable pen.

Step four Back stitch over the traced teddy lines with three strands of stranded cotton.

MAKING THE POCKET

Step one Pin the main and lining pocket fabrics RS together then place the pocket template centrally on top and draw around it.

Step two Stitch along the traced line through both layers of fabric, leaving a 3cm (1¼in) turning gap in the centre of the top edge.

Step three Turn the pocket RS out, tuck the edges of the gap to the inside and press.

Step four Topstitch along the top edge to close.

Step five Pin the pocket to the kimono front in the traced position and topstitch in place.

MAKING THE OUTER AND LINING

Step one Cut the ribbon in three equal pieces.

Step two Pin one length of ribbon 10cm (4in)



up from the bottom left side of the kimono back outer, matching raw edges.

Step three Place the kimono front and back outer pieces RS together, matching side edges.

Step four Stitch together across the shoulder and around the side and sleeve seams.

Step five Pin another length of ribbon 3cm (1¼in) below the left arm of the kimono back lining, matching raw edges as before.

Step six Stitch the kimono lining pieces together in the same way as for the outer.

ASSEMBLING THE KIMONO

Step one Pin the lining inside the outer wrong sides (WS) facing and matching seams. Place the third piece of ribbon 10cm (4in) above the bottom edge of the front right, matching raw edges as before, and pin into place.

Step two Starting in the centre of the neckline, fold the bias binding around the raw edges of the front and back opening and sleeve hems.

Step three Turn under and trim the short end to overlap where you started. Topstitch the binding in place, encasing the ribbon end. **02**

MAKING THE MITTENS

Step one Stitch one mitten outer and lining RS together along the short edge. Press open.

Step two Place the template on the outer, with

the bottom edge on the seam, and mark the buttonhole position. Repeat on the lining. **03**

Step three Stitch the buttonhole in place.

Step four Repeat this with another mitten outer and lining.

Step five Fold the joined mitten pieces RS together then place the template on top, on the seam, and draw around it. Sew together along the lines but leaving a 3cm (1¼in) turning gap in the lining. **04**

Step six Turn RS out and push the lining inside and press. Using three strands of green stranded cotton, work a running stitch through both the outer and lining all the way around 3mm (¼in) above and below the buttonhole to make a casing.

Step seven Cut the suede strip in half and thread one piece through the casing.

Step eight Now repeat to make the second mitten in the same way.



This matching baby kimono and mittens set is one of 20 gift ideas in *Made for Baby: Cute Sewn Gifts* by Ayda Algin. £14.95, www.tuvapublishing.com

— FAST FAT QUARTER —

QUICK
PROJECT
USE 1 FAT
QUARTER



UP AND AWAY



Pack everything you need for a summer adventure in Jennie Jones' patch-pocket drawstring bag. Let's go!

FAST FAT QUARTER



YOU WILL NEED

- 1 fat quarter
- Contrast fabric: 10x14cm (4x5½in), for the pocket
- Bias binding: approx 25cm (10in)
- Thick piping cord: 2.5m (2¾yds)
- Basic sewing kit

FABRIC USED

Fat quarter: Summer Balloons from Sweet Escape by Dashwood Studio. Ref: SUES1189. Available from www.sewcraftyonline.co.uk

Contrast fabric: ZigZag Corn Yellow by Premier Prints. Ref: ZIGZACW. Available from www.fabric-yard.co.uk

NOTE

- Use a 1.5cm (¾in) seam allowance unless otherwise stated.

CUTTING OUT

- Step one** From the fat quarter cut two pieces 49x28cm (19¾x11in) for the bag.
- Step two** From the bias binding cut:
- Pocket edging:** one piece 12cm (4¾in) long.
 - Loops:** two pieces 6cm (2¾in) long.
- Step three** Cut the cord in two equal lengths.

PREPARING THE BINDING

- Step one** Fold the pocket bias binding around the top long edges of the pocket and topstitch.
- Step two** Fold the lengths of the loop bias binding in half lengthways and topstitch. **01**

ATTACHING THE POCKET

- Step one** Fold the raw edges of the pocket piece and bias binding under by 1cm (¾in) to the wrong side (WS) and press.
- Step two** With right sides (RS) up, place the pocket 8cm (3¼in) up from the bottom edge of a bag piece, centred across, and pin. **02**
- Step three** Topstitch the sides and bottom.

ADDING THE LOOPS

- Step one** Fold one of the loops in half widthways and tack the short ends together.
- Step two** Place the pocketed bag piece RS up then place a loop on top of the bottom edge, matching raw edges, 1cm (¾in) in from one side. Tack into place.
- Step three** Repeat to place then tack the other loop in the same position in the opposite bottom corner of the same bag piece.

ASSEMBLING THE BAG

- Step one** Place the bag pieces RS facing and pin together along the bottom and sides. **03**

- Step two** Stitch the pieces together down the sides and across the bottom, but leaving the top 10cm (4in) of each side unstitched.

- Step three** Turn the unstitched sections at the top of the bag to the WS and press. **04**

MAKING THE CASINGS

- Step one** Turn the raw side edges of the unstitched sections at the top under by 1.5cm (¾in) to the WS and topstitch to hem.
- Step two** Press the top edges of the bag front and back under by 1.5cm (¾in) to the WS.
- Step three** Fold over again so the first pressed fold meets the top of the side seams.
- Step four** Pin and then topstitch along the bottom edge to hold the casings in place. **05**

ADDING THE CORD

- Step one** Cut the cord in half then thread one piece through the casing all the way around, starting and finishing in the same place. **06**
- Step two** Thread both ends of the cord through the loop on the bottom of the bag that's on the same side then knot the two ends of the cord.
- Step three** Repeat this with the other piece of cord but starting and finishing at the opening of the casing on the opposite side seam and knotting it though the other bottom loop.

TURTLE POWER

Dive into fun and games with Flipper and Fin, Jo Carter's sea-dwelling duo with snuggle-friendly soft patchwork shells.





YOU WILL NEED

- Main fabric: plain solid, for main body, flippers and tail 45x45cm (18x18in)
- Contrast fabric: print, for bottom shell, 40x25cm (16x10in)
- Six assorted fabric scraps: for side and top shell, 10x10cm (4x4in) each
- Pair of 12mm black plastic safety eyes
- Polyester toy filling
- Stranded cotton: black
- Basic sewing kit

FINISHED SIZE

Approx: 22x18cm (8¾x7½in)

NOTES

- Use a seam allowance of 5mm (¼in), unless otherwise stated.
- You will find all the templates needed on the pull out pattern sheet included with this issue.
- As the flippers and tail are sewn directly into seams it is advisable to sew over the joins to make sure they are well secured.

CUTTING OUT

Step one Trace and cut out all the template pieces. The templates include the seam allowances and the arrows indicate the print direction for marking and cutting out. The notches are used to match pieces when stitching together, so mark these too. When the pattern specifies to cut two or more of a template, after marking out half of the pieces required, the template needs to be turned over to mark out the remaining half so that the pieces are cut as mirror images.

Step two Using an erasable pen or pencil, draw out the pattern pieces onto the wrong side (WS) of the fabric and cut out as follows:

From the main fabric:

- Upper head, cut 2.
- Chin, cut 2.
- Tummy, cut 2.
- Flipper, cut 8.
- Tail, cut 2.

From the contrast fabric:

- Bottom shell, cut 2.

From the fabric scraps:

- Top centre shell, cut 1.
- Side shell, cut 5.

JOINING THE HEAD AND TUMMY

Step one With right sides (RS) together, sew a chin piece to its corresponding upper face

piece, pivoting at the central corner in the 'mouth' seam. Close the dart at the top of the upper face. **01**

Step two Sew the back of the head to the front of the tummy RS together, making sure that the head is the correct way up. A marker on the tummy indicates the position of the chin/upper head seam. **02**

Step three Repeat for the other half of the head and tummy.

ADDING THE FLIPPERS

Step one Place two mirror-image flipper pieces RS together and sew around the sides, leaving the top open. Clip the curves, turn RS out, stuff and then tack the end closed. **03**

Step two Place the joined body sections RS together and sew from the dart in the upper head to the top short edge of the tummy.

Step three Position the flippers in between the markers on the RS of the tummy and tack in place, making sure they are facing in the right direction. **04**

MAKING THE TOP SHELL

Step one With RS together, join the top side of each of the side shell pieces to the top centre shell piece. **05**

Step two With RS together, taking care not to catch the top centre shell in the seams, sew



all of the sides of the side shell pieces together except for one.

MAKING THE BOTTOM SHELL

Step one Find the side shell piece that falls opposite the one open unsewn side and, with RS together, line up the centre of that side shell piece with the marker at the top centre of the inner curve on a bottom shell piece (this will be the upper bottom shell). Starting at this top centre point, sew one side of the shell to the upper bottom shell. Return to the top and sew the remaining side together. Joining the shell sections in two parts like this helps to ensure that they fit together straight and evenly. ⁰⁶

Step two With RS together, sew closed the remaining side of the side shell pieces and the upper bottom shell.

Step three With RS together, line up the seam that joins the top of the tummy pieces with the marker at the top centre of the inner curve which is in the remaining (lower) bottom shell piece.

Step four Sew one side together from that top centre point to just beyond the back flipper. Don't sew all the way to the back of the body as the tail is not yet in place. Repeat for the remaining side of the tummy and lower bottom shell. ⁰⁷

ADDING THE TAIL

Step one Place the tail pieces RS together and sew together, leaving the end open. Clip the seam allowance at the tip.

Step two Turn RS out, stuff and tack closed.

Step three Sew the tummy pieces RS together from the back along the centre bottom for 6cm (2 $\frac{3}{8}$ in). Sew the short ends of the lower bottom shell piece together. ⁰⁸

Step four Tack the tail to the RS of the tummy pieces so that the centre back of the tail lines up with the seam in the back of the tummy.

Step five Sew the remainder of the bottom shell to the tummy to fix the tail in place.

ADDING THE EYES

Step one Make the smallest holes possible through which to allow the shank of the eye in the upper head pieces where shown on the template.

Step two Fit the eyes in place according to the manufacturer's instructions. When using thin fabric, it's best to fit a small square of felt or wadding over the eye shank before fitting the back to support the fabric around it.

JOINING THE SHELL AND BODY

Step one Sew the head together from the dart around the front of the turtle and down to the tummy and finishing to leave an

opening in the tummy approx 7cm (2 $\frac{3}{4}$ in). Clip V-shaped notches in the seam allowance around the curved front of the head. ⁰⁹

Step two Sew the upper and lower bottom shell pieces together all the way around the outer edge. ¹⁰

Step three Turn the turtle RS out through the gap in the tummy seam and press.

Step four Hand sew the upper and lower bottom shell together around the inner curve using co-ordinating thread so that the stitches will not be visible. ¹¹

FINISHING OFF

Step one Stuff the head and body.

Step two Embroider a mouth following the seam using black stranded cotton.

Step three Sew some shaping between the eyes by bringing the needle out at the front of one eye, securing the thread with a few small stitches and then taking the needle through the head to the other eye and then back again to the first eye (don't make the shaping stitches too small as they may pull and damage the fabric). Pull lightly on the thread to bring the eyes together slightly, giving the face a little more character. ¹²

Step four Adjust any stuffing that has become disturbed and then close the opening in the bottom of the turtle using ladder stitch.



Learn how to make a reversible tote bag and leggings/yoga pants with vivacious Miss Libby Rose.



TV personality and keen crafter Jenny Elair will be hosting the 1,200-seat Super Theatre.

GOING LIVE

We're buzzing about a brand new show happening this September, and you're all invited. Come along to join the fun at **The Great British Sewing Bee Live!**

Written by Judy Darley.

Photos: www.angelinemurphy.com



Make a cute memory bear and revamp an existing skirt or top with a peplum with Angeline Murphy.



We love a live craft show, especially one that features an abundance of sewing. Add the ingredients that have made *The Great British Sewing Bee* such compelling viewing, and you know you're onto a winner! With comedian and actress Jenny Elair hosting the Super Theatre and a sterling line-up including *GBSB* judges Patrick Grant and Esme Young, drop-in clinics, demonstrations, stalls and a fantastic assortment of workshops taught by former contestants and industry experts, we're beside ourselves with anticipation!

The Great British Sewing Bee Live comes to London from 21-24 September and is being billed as the UK's largest new dressmaking and sewing event. It's organised by the same folks who do the Knitting & Stitching Show, so you know it's going to be inspiring and entertaining. Sewing Quarter – our sister TV channel – is one of the event sponsors, and we'll be there too, with a stand where you can drop by for a chat and join in a voile pom pom scarf workshop taught by one of the *Simply Sewing* team.

And we're not the only ones who are excited: "I think The Great British Sewing Bee Live is a great progression from the original programme," says season three contestant Paul Clarke. "It will offer the chance not only to watch participants working and ask us questions, but also to take part in the experience."

We chatted to some of the talented sewists preparing to pass on their skills to find out what's on offer at the show, and what they're looking forward to most.

CHOOSE YOUR WORKSHOP

From beginner to professional level, there are over 250 workshops and demonstrations, so first things first, you need to know what you want to learn, or decide whether you're more interested in working with a particular past contestant and reliving a fond *GBSB* memory!

With a variety of workshops on offer, this is the perfect chance to master a few new techniques. As well as *GBSB* contestants, there will be classes from a host of top UK sewing tutors, including Celia Banks, Claire Tyler, Wendy Gardiner and Miss Libby Rose, teaching classes ranging from dressmaking to using overlockers, all taking place in the spacious architecture of ExCel London.

"Taking a class means you can choose to

Photos top left: www.misslibbyrose.com; Photo top right: www.thegreatbritishsewingbeelive.com

brush up on specific techniques from zip insertion to welt and bound buttonholes, learn to use an overlocker, make a garment or two or make accessories such as bags or ties," says Wendy Gardiner, who put the programme together. "Classes range from one hour to three hours in length, catering to different abilities ranging from absolute beginners to those with advanced skills, so there really is something for everyone. There will also be demonstrations and talks in the theatres, too – so loads to do and see and, of course, many great exhibitors selling fabulous products, fabrics, haberdashery, sewing machines and more."

Premium haberdashers Milward and Vlieseline (Vilene), a company known for its interfacing and craft products, sponsor the workshop programme. Read on to discover our pick of the workshop highlights.

COUTURE TECHNIQUES

Season four's Jamie Kemp (www.maledevonsewing.co.uk) is teaching workshops focused on couture techniques such as hand-sewn buttonholes, canvas interfacing construction for tailored jackets and beautiful welt, jetted and flap pockets.

"I'm very excited to be a part of the event as it will be more than just a sewing show," Jamie says. "There are hundreds of different workshops running over the four days aimed at all levels of sewer. It will give everyone the opportunity to learn new skills and try techniques they might otherwise be scared of, in a really relaxed atmosphere." He is looking forward to finding out what else is happening, too. "The event will be focused on the visitors



and will clearly show why the television show is so popular," he says. "And, of course, there will be plenty of the past contestants to have a chat with. I'm really excited to meet many of the social media friends I've not actually met but who have supported my sewing adventures over the years."

{ "CLASSES RANGE FROM ONE HOUR TO THREE HOURS IN LENGTH, CATERING TO DIFFERENT ABILITIES." }

UPCYCLED FINESSE

Angeline Murphy (www.angelinemurphy.com) from season four of the show is teaching two very different workshops.

"The first class is on making a memory bear," she says. "This is a fun project for beginners where students can get to grips with pattern cutting, machine sewing, embroidery, hand sewing and bow making. It's suitable for all levels including beginners and children aged 12 years and older."

The memory bear project transforms a treasured item of clothing into a cute keepsake, and we love the fact that, as

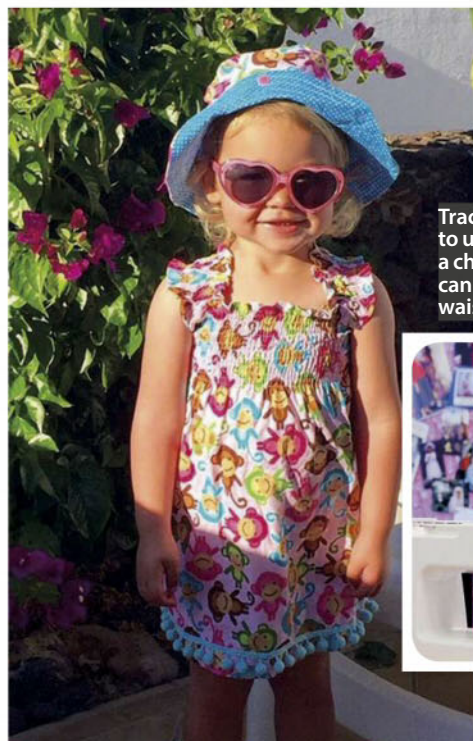


Miss Libby Rose will be running two pattern hacks to show how easy it is to create a personalised design from a pattern.

Angeline points out, the bears make thoughtful presents. "Students will walk away from the class with something very special and feel fulfilled at having learned a skill to use in the future," says Angeline.

Angeline's second class is ideal if you're interested in adding a cunning garment-updating skill to your sewing arsenal. Under Angeline's guidance you'll learn to revamp an existing skirt or top with a self-drafted peplum. "By attaching a peplum, you can add detail and volume to almost any existing garment," she says. "The peplum is a current fashion trend that adds a feminine touch with just the right amount of style."

Angeline can't wait to reunite with some former competitors, or should that be allies? "I'm very excited to meet my fellow Bees



Tracey Symonds shares how to use shirring elastic to make a child's sundress which you can then use on cuffs and waists on adult clothes, too.



Discover couture sewing techniques with Jamie Kemp, from perfect pockets to hand-sewn buttonholes.



Paul Clarke shows you how to recreate his elephant ballerina headwear and alter it to suit a variety of sizes.

and judges again," she says. "I had so much fun on the show, it'll be great to catch up with everyone. I'm also looking forward to meeting all the GBSB enthusiasts and teaching some sewing techniques."

GETTING CREATIVE

Sewing and fashion design teacher Miss Libby Rose (www.misslibbyrose.com) will be bringing her quintessentially vivacious approach to her workshops at the show.

"My passion is teaching people a skill that will go on way beyond the class," she says. "What you gain is so much more than the ability to make a single garment or accessory. Instead you'll come away with the skill to continue taking this further by creating your own versions." Miss Libby will be teaching four classes. "In the leggings/yoga pants class we first learn the skill of measuring up," she says. "This process is all done in a very light-hearted manner while



Get zip savvy with Jade Earley who demonstrates how to insert a centre zip, an invisible zip and a metal chunky zip.

maintaining the focus to achieve precise results. It all begins with drawing on paper to shape burgeoning ideas into personal designs. Next we choose suitable, stretchy fabrics such as jersey, and use the walking foot on the machine as we get sewing! This class gets everyone bubbling."

Miss Libby's second workshop, Making a Reversible Tote Bag, will equip sewists of all abilities to create a fully lined tote bag from four pieces of fat quarter fabric. "The skills and knowledge gained in this class will take the nervousness out of lining and spur you on to tackle more projects! There's also the option of using some Bondaweb to

"join in FOR THE CHANCE
TO HAVE A CHAT AND A
LAUGH WITH CONTESTANTS
FROM THE SHOW."

create a cute appliqué shape."

The other two classes, she says, are "pattern hacks using Simplicity patterns. I usually only teach design from scratch so this type of class is something I've been wanting to do on a big scale for some time. For a quick and easy dress, I want to show how easy it can be to create a personalised design from a shop-bought pattern."

WEAR, GIVE, EMBELLISH

Workshops from season four's Tracey Symonds (www.polkadotdesigns.co.uk) will explain how to draft a simple trapeze swing top pattern, walk you through making a child's cotton sundress and offer an insight into free motion embroidery.

"I'm really excited to be taking part," Tracey enthuses. "I think it's going to be a great event for anyone interested in sewing, whether they're new to it, or have been sewing for years! There's a wide range of workshops aimed at all abilities, so visitors will find something to suit them, or they can just join in for the chance to have a chat and a laugh with contestants from the show." For her workshops, Tracey decided she wanted to cover skills you could apply to other garments, "not just the ones made in the workshops. So, for example, in my workshops on making a child's sundress, the aim is to learn how to use shirring elastic, which you can then use for cuffs or skirt waists on adult clothes."

Likewise, in Tracey's workshop on



Join Joyce Bellingham to make a skirt using a single piece of fabric and without a pattern!

drafting a trapeze top, the principles of adding ease and taking measurements will apply across lots of garments. "My final workshop is about free motion embroidery skills," she says. "It's my newfound passion, and once you've learnt the basic techniques you can produce everything from artwork and embroidered garments to cushions and soft furnishings. It's addictive! My husband warns everyone who comes to our house not to stand still or they'll be embroidered."

Tracey is looking forward to spending some time with her fellow contestants, as well as meeting participants from previous series. "Of course, it will be lovely to see Patrick and Esme again, too, but I'll have to make sure what I wear is perfect," she says. "I'll be there for all four days of the show so when I'm not running a workshop I'll be wandering round the stands, saying hi and, of course, buying more fabric!"

THAT ELEPHANT COSTUME

Paul Clarke will be showing sewists how to recreate his elephant ballerina headwear from the children's fancy dress week of season three. "I designed the elephant head costume myself from a basic balaclava idea, with added ears and a trunk attachment that works as a way of fastening the headdress under the chin," says Paul.

We think this is the most playful garment being taught at the show and, as Paul points out, "it's just as appealing for small children and large children, aka adults!" From start to finish, Paul will demonstrate ways to alter the pattern to suit a variety of sizes. "During this workshop I hope people will experience the fun and the laughs I had making this during the filming of children's fancy dress week in the GBSB sewing room."

Paul will also be tutoring the art of double welt pockets. "This workshop will show you the basic pieces you need for

construction and I will take you through all the stages to complete a pocket," says Paul. "An additional feature will be how to add a flap into the double welt. I'm hoping I can pass on the excitement of my first ever time of making a double welt pocket and the amazement of the process which literally turns a few pieces of fabric into a stylish garment design." As well as the event offering him the chance to share his love for sewing, Paul is anticipating the delight of meeting contestants from other seasons of *GBSB*. "There are a few I've already met, and others I've just chatted to on social media. I think there will already be a bond between us from having taken part."

BEADS, ZIPS AND BIAS BINDING

GBSB's youngest ever contestant, Jade Earley from season four, will be sharing how to make a child's PJ set and yoga pants using four-way stretch fabric, and the secrets of successful sewing with beaded and sequin fabrics. She'll also cover all the challenges of zips, demonstrating how to insert a centre zip, an invisible zip and a metal chunky zip. "I'm hoping that people will come away from my workshops knowing more about the type of fabric they're using but also the types of machines they use," Jade says. "I'm excited about meeting the people who have booked onto my workshops but also having four days of sewing, seeing all the lovely sewers, and, of course, seeing Patrick and Esme again!"

Jade will team up with fellow contestant Joyce Bellingham to provide tips on a key technique: sewing with bias binding. "I'm thrilled to be a part of *The Great British Sewing Bee Live*," says Joyce. "I'm teaching two workshops. The first is with the lovely Jade, when we will be sharing our tips on sewing with bias binding and the different uses for it. We hope this will be a fun session as well as an informative one. We'd like people signing up to go away with lots of bright ideas for using bias binding in ways they had never thought of before!"

In her second workshop, Joyce will show attendees how to make a skirt with a single piece of fabric and without using a pattern. "I hope my fellow sewists attending the workshop will take away a renewed enthusiasm for sewing," she says. "I also hope to inspire them to develop their natural talent for the craft by showing what can be achieved by constructing a simple skirt that can be personalised in different ways to create an exclusive garment." Joyce is looking forward to every part of the show.

Wendy Gardiner put together the workshop programme and will be teaching every day.



"I'm excited about meeting up with old friends as well as making new friends who have a passion for sewing," she says. "I can't wait to share ideas and check out what the sewing world has to offer!"

"WE'D LIKE PEOPLE SIGNING UP FOR THIS WORKSHOP TO GO AWAY WITH LOTS OF BRIGHT IDEAS!"

THE WHOLE PACKAGE

Wendy Gardiner leapt at the chance of being involved with the event. "I'll be teaching every day because I just couldn't resist the opportunity, but when not teaching, I'll be there in the workshop area as I put the whole programme together!" she says. "I think the show will be a fabulous opportunity to meet many of the people we've seen on our screens, and to learn or improve your sewing techniques so you can continue to enjoy sewing at home. And, of course, there'll be the chance to meet other sewing enthusiasts – it's so good to meet fellow sewists, swap stories and share tips."

Wendy is teaching one class on each day

of the show. "On Thursday I'll share tips on one of my favourite topics – Fabulous Feet Demystified." In this two-hour session you'll get to try out different sewing machine feet that will make your sewing projects easier. "These include overedge, walking foot, buttonhole and blind hem. Participants will have fun using them and making their own samples knowing they'll be confident to tackle it all at home." On Friday Wendy will teach a 90-minute class covering *Top Dressmaking Techniques You Shouldn't Be Without*. "So often patterns tell you to do things like 'stay stitch' or 'under stitch'. Many people aren't sure how, so leave it out, but these steps are important. I'll show how to do them and provide tips along the way."

Saturday's class is called *Brush up on Boning*, "a quick one-hour class, showing two methods of inserting boning to add support to bodices," she explains. "And on Sunday I'm going back to basics with *What It All Means: Understanding Paper Patterns*. People are often unaware of how much information a pattern pack has that really helps with decisions on sizing, fabrics, quantities, marking pieces, and more. Once you understand the symbols and markings, construction becomes so much easier and I like to share that! Sewing should be fun."

TICKET DISCOUNT CODE!

Workshop prices range from £15 for a one-hour session to £39 for a three-hour session, including the cost of materials, unless otherwise indicated. *McCalls* will have a *Pattern Classroom* there too, offering free scheduled sessions by tutors who'll share their knowledge. Use code *SMD* at the checkout to get £1.50 off advance adult, OAP and student tickets. Find full details at www.thegreatbritishsewingbeelive.com

FREE
TRIAL FOR
YOU!

DOWNLOAD YOUR ISSUE OF SIMPLY SEWING NOW!

You can buy a digital edition of *Simply Sewing*, ready to read whenever you want. Single issues and subscriptions are available and every issue you purchase is stored in your magazine library permanently. Once your magazine has downloaded, an internet connection is not required so you can take your magazine with you, wherever you go.



To buy your digital copy of *Simply Sewing*, visit

www.simplysewingmag.com/digital

On Android or PC/Mac? Find us on

www.zinio.com/simplysewing



nook



iPad is a trademark of Apple Inc., registered in the U.S. and other countries. App Store is a service mark of Apple Inc. NOOK is a registered trademark of Barnes & Noble, Inc. NOOK Tablet is a trademark of Barnes & Noble, Inc

*Free trial not available on Zinio

STITCH

library

Nº02

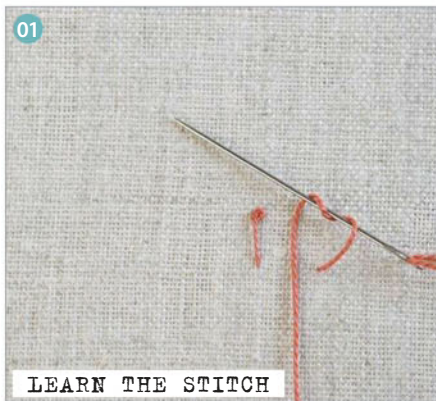
PISTIL STITCH



Embroider a pretty new addition to your sewing kit with **Mollie Johanson's** pincushion project decorated with pistil stitch stars.

CUT OUT & KEEP

PISTIL STITCH



LEARN THE STITCH



USE THE STITCH



YOU WILL NEED

- Main fabric: linen, 15x15cm (6x6in)
- Backing fabric: quilting cotton, 11x11cm (4 $\frac{3}{8}$ x4 $\frac{3}{8}$ in)
- Perle cotton (size 8): in a selection of colours of your choice
- Polyester stuffing
- Crushed walnut shells (or your choice of pincushion filler)
- Basic sewing kit

NOTES

- You will find the embroidery template on the pull-out pattern sheet provided with this issue.
- Use a 1cm ($\frac{3}{8}$ in) seam allowance.

TIP

Crushed walnut shells make a great filler as they keep your pins sharp – you can find them in pet shops.

WORKING A PISTIL STITCH

Step one Bring the needle up through the fabric at one end of the stitch. Wrap the working thread around the needle twice, just as you would with a French knot. **01**

Step two Insert the needle in the fabric at the other end of the stitch. Keep the needle part way through the fabric as you start to pull the working thread taut. **02**

Step three Hold the working thread with one hand as you pull the needle through the rest of the way.

Step four Continue pulling the thread through as the knot at the end of the pistil stitch tightens. **03**

MAKING THE PINCUSHION TRACING THE DESIGN

Step one Trace the embroidery template from the pattern sheet.

Step two Place the main fabric centrally on top and hold in place with masking tape.

Step three Trace over all the lines using a pencil or an erasable pen. If you can't see the design very well then simply tape the template and fabric onto a window so the light shines through.

WORKING THE EMBROIDERY

Step one Using one strand of the Perle cotton, start by working the Pistil stitch stars following the pistil

stitch instructions.

Step two Work the dots between the stars as French knots in a contrast colour.

Step three The small stars, which are between the large pistil stitch stars, are worked as three straight stitches crossing over each other in the centre to form little star shapes.

MAKING THE PINCUSHION

Step one Trim the stitched fabric to 11x11cm (4 $\frac{3}{8}$ x4 $\frac{3}{8}$ in) with the design placed centrally. **04**

Step two Pin the stitched fabric and backing fabric right sides (RS) facing.

Step three Sew together, leaving a 2.5cm (1in) gap in the centre of one side for turning and backstitch at the start and finish to secure.

Step four Trim the corners and turn the pincushion RS out, poking the corners into shape.

Step five Fill the pincushion, alternating between polyester stuffing and crushed walnut shells or your choice of pincushion filler. **05**

Step six Slip stitch or ladder stitch the opening closed for an invisible seam.

TYING THE CORNERS

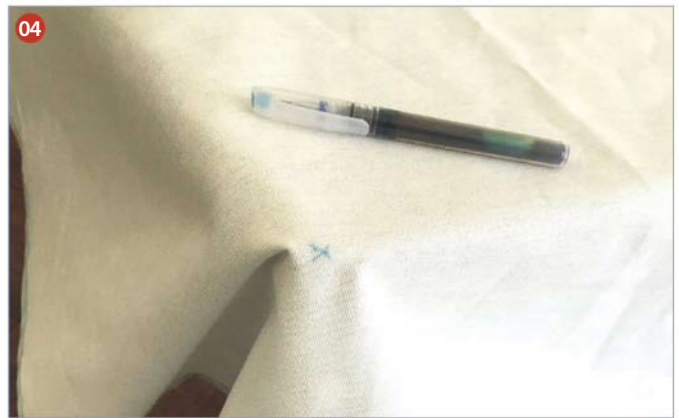
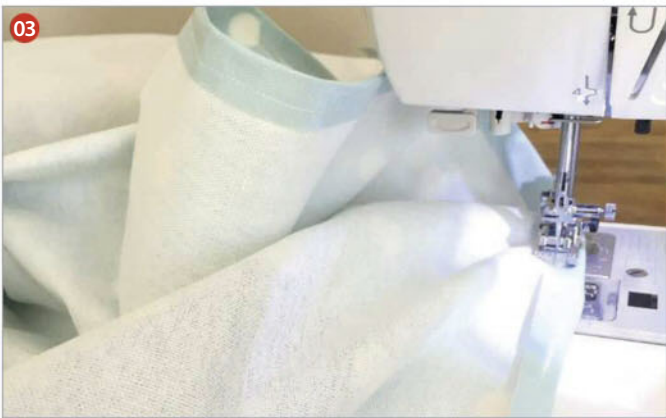
Step one Finish the corners by wrapping each one with Perle cotton and tying with a doubled knot on the underside. **06**

Step two Trim the excess thread to finish.

GREAT OUTDOORS

Ensure the summer breeze doesn't interfere with your al fresco fun with **R&B Designs'** tablecloth made with ties to hold it in place.





YOU WILL NEED

- Oilcloth fabric: see instructions for how much to buy
- Matching thread
- Basic sewing kit

R&B Designs says: "What could be more delightful than to take your table out into the garden and have a meal with friends? Being the UK, though, chances are it will be a tad breezy and the cloth will come off! Well, we have a solution for you. Create a tablecloth with ties to hold it all in place."

MEASURING UP

Step one Measure the top of your table then add 52cm (20½in) to the width and length. This includes a hemming allowance and a 25cm (10in drop) on each side of the table.

Step two You may be limited by the width of the fabric as to the measurement of the drop. If this means that the drop for the width is less than 25cm (10in) then adjust the drop for the length so it is the same for an even look.

Step three Add 16cm (6in) to your calculated length to use for the ties.

Step four Purchase your chosen oilcloth fabric to these dimensions.

CUTTING OUT

Step one Cut two 8cm (3in) strips across the width of the fabric. **01**

Step two Cut both of these strips in half to make four strips. **02**

Step three Cut the remaining oilcloth to the dimensions you calculated if necessary.

MAKING THE TIES

Step one Fold one tie strip in half lengthways with wrong sides (WS) together.

Step two Open out then fold the long raw edges so they meet at the centre fold. Fold in half again and topstitch into place.

Step three Repeat to fold and stitch the other three tie strips.

HEMMING THE TABLECLOTH

Step one Fold all the raw edges of the tablecloth fabric under by 1cm (¾in) to the WS.

Step two Stitch the edges down to hem. **03**

ATTACHING THE TIES

Step one Lay the tablecloth right sides (RS) down centrally on top of the table.

Step two Mark each corner of the table and the place where the legs start beneath it with a cross on the WS of the tablecloth. Take into account the depth of your tabletop, as the legs may start away from the tabletop corners. **04**

Step three Take one tie strip and fold it in half widthways to find the centre.

Step four Place this centre point on top of the marked cross on the tablecloth and stitch across it a couple of times to hold securely in place.

Step five Place the cloth RS up on top of the table then tie the ties around each leg to hold.

STASH SHOPPING

Fill up your stash with fabric, patterns and more from these fabulous shops!

NORTH WEST



Haberdashery & Sewing School

DOLLY'S HABERDASHERY

Dolly's is an inclusive and friendly environment, with ongoing classes from Learning to Love your Sewing Machine to Garment Making.
01925 820780

SOUTH WEST



INCHES FABRICS

Fabrics, wools and haberdashery. Buttons, ribbons and patterns. Knitting and sewing lessons.
39 Parsonage St, Dursley, Glos, GL11 4BP
inchesfabrics.co.uk

DERBYSHIRE



STRAIGHT CURVES

provides a wide range of high quality arts and crafts courses and workshops in the heart of Chesterfield. Discount code: SS08
straightcurves.co.uk

SCOTLAND



ROMY'S SEWING ROOMS

Bright, friendly shop for all sewers, selling patterns, fabric and notions. Sewing classes for all ages and abilities from an experienced dressmaker.
facebook/Romyssewingrooms/

MIDLANDS



HAPPY HARE

An independent sewing store in Chapeltown, Sheffield, stocking a range of fabrics, including Michael Miller, Riley Blake and Tula Pink.
handmadehappyhare.com

MIDLANDS



CRAFTY SEW & SO

Crafty Sew&So have everything you need for your next sewing project! Use code CRAFTY10 to get 10% off your first order online!
craftysewandso.com

SOUTH EAST



SEW BUSY

Stockists of Makower, Robert Kaufman, Clothworks and Windham, among many others. Ribbons, haberdashery, sewing themed goods and classes.
sew-busy.co.uk

SCOTLAND



HAZEL'S FABRIC CRAFT

Patchwork & Quilting Supplies and workshops. Open Fri & Sat 09:30-16:30, Sun 10:00-14:00.
10a Main Street, West Calder EH55 8DA
hazelsfabriccraft.co.uk

SCOTLAND



PURELY PATCHWORK

Doctor Who fabric, £14.00p/m. View the collection at:

purelypatchwork.co.uk
01506 846200 to order

SOUTH EAST



SIMPLY HABERDASHERY

Online haberdashery & fabric store selling all sewing essentials at great prices and FREE DELIVERY. Use code SS10 for 10% off first order.
Simplyhaberdashery.com

NORTH



OAKAPPLE HABERDASHERY

Contemporary fabric and quirky bits and bobs. check out our new subscription box - Sew Darn Sweet. Use code Simply15 for 15% off first order.
oakapplehaberdashery.co.uk

SOUTH



CHALK HILL BLUE FABRICS

Supplier of patchwork fabrics, threads, waddings and notions. Keep up with events on Facebook!
01903 230008
FB/Chalk-Hill-Blue-Fabrics

SOUTH WEST



BECKFORD SILK

Silks & velvet. Natural, printed and dyed. Small quantities at wholesale prices.
01386 881507
www.beckfordsilk.co.uk

SOUTH WEST

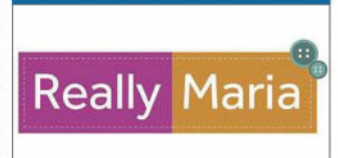
Caffle Crafts

2 miles from J21 M5
(01934) 838327
BS24 6SE

CAFFLE CRAFTS

Family run shop selling Brother sewing and embroidery machines, fabrics and machine embroidery threads. Closed Mondays.
tina@caffle.co.uk

LONDON



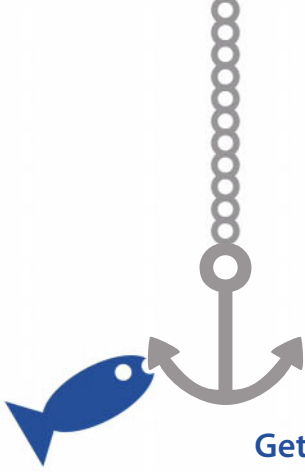
REALLY MARIA

An Extensive range of Fabrics, Wool, Haberdashery, Craft Kits and Workshops. New to London.
0203 5810909
maria@sammur.com

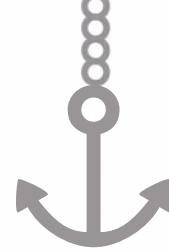
To advertise here contact

Isabel Higuero
0117 300 8538
isabel.higuero
@immediate.co.uk

or Jordana Widt
0117 300 8539
jordana.widt
@immediate.co.uk



LAND AHOY!



Get swept away this summer with these fresh nautical finds!



1



2

1 THE CORNER PATCH

The Corner Patch has a large selection of top quality 100% cotton fabrics, Mettler threads, wadding and haberdashery. We offer classes and workshops for all ages and abilities. Contact Jane on 01785 859360 or jane@thecornerpatch.co.uk. thecornerpatch.co.uk

2 FABRIC CIRCUS

For a wonderful array of popular fabrics this summer season visit Fabric Circus. Exceptional quality cotton for all your crafting needs in a wide variety of colours and prints including nautical, stars & stripes, floral, gingham and much more! fabriccircus.uk



3



4

3 MIBS FABRICS

Mibs fabrics specialise in all things stretchy. From cotton lycra and swim lycra to stretch lace and ribbing with a whole host of other fabrics and a great range of haberdashery too. mibsfabrics.co.uk

4 JJ TEXTILES

As a second generation textile merchants, JJ Textiles offer a range of fabrics for all your sewing needs. In our fantastic summer dress range we have a number of vibrant printed viscoses, crepe de chines, cottons, and much more. thefabricman.etsy.com ebay.co.uk/usr/thefabricman



5



6

5 THE SEWING HUTCH

A small, online business providing a unique range of carefully selected fabrics, buttons, ribbons and more. Take a browse and breathe new life into your home crafting supplies! etsy.com/uk/shop/TheSewingHutch

6 TRUROFABRICS.COM

Trurofabrics.com offers a friendly, high quality service to every customer with an added personal touch from our team of experienced staff. *Red & Blue Nautical – 100% cotton fabric 150cm wide - £12.50 per metre* Trurofabrics.com

Simply Sewing

FRESH IDEAS WITH FABRIC

THE GUIDE

You'll find essential information, useful stitches and key sewing techniques on these pages.

MARKING PEN

Transfer markings to your fabric, then wash them out when finished.

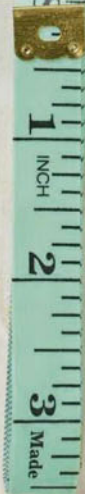


MARKING PENCIL

Choose a colour that shows up on your fabric.

TAPE MEASURE

A flexible fabric tape measure will take accurate measurements.



FABRIC CLIPS

Use these instead of pins when sewing thicker fabrics.



TAILOR'S CHALKS

Chalk temporarily marks fabric and can be easily brushed away.



SEAM RIPPER

This sharp blade cuts through and unpicks stitches.



THIMBLE

Wear to protect your fingers when handstitching.



PINS

Stainless steel pins with sharp points are best.



PINKING SHEARS

These cut a zigzag edge on fabric to neaten.



SHEARS

Keep a pair of sharp shears just for cutting out your fabric.



SMALL SCISSORS

Use for snipping threads and cutting notches.



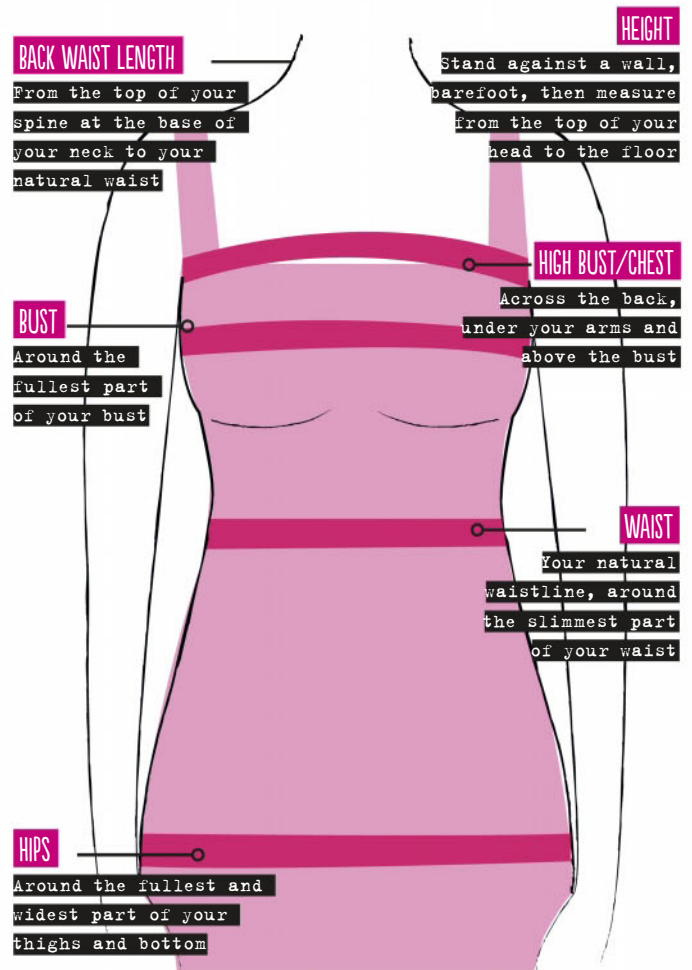
HOW TO MEASURE YOURSELF ACCURATELY

ALWAYS MEASURE YOURSELF BEFORE you choose a pattern size to cut out. The sizes do vary greatly from pattern to pattern, so it's always best to measure yourself accurately and then refer to the pattern's size chart to find your size. The chart will usually be printed on the pattern envelope or on the instructions inside.

Measure yourself in your underwear and preferably in the bra you'll be wearing underneath

your garment as this can alter the measurements slightly. Use a fabric tape measure as it'll curve around your body well for accuracy. You can measure on your own if you stand in front of a mirror, but, for best results, ask a friend to help so they can check the tape measure is sitting in the right places. Make sure the tape measure sits snugly around you but is not pulled tight.

Take the measurements shown in the diagram and note them down.



HOW TO USE A PATTERN

Preparing your fabric and cutting out your sewing pattern accurately is just as important as the actual sewing. Wash your fabric before you begin as fabric can shrink and run. Once dry, press it well.

PREPARING THE PATTERN

Patterns often come with several options of different finishes so you may have more pieces than you need. The instruction sheet will tell you which pieces to use. Roughly cut out all of the pieces outside the lines then press the pieces using a dry iron on a low heat to remove the folds and creases.

CUTTING OUT THE PATTERN

Choose your size using your measurements and the size chart. Cut along the corresponding lines on your pattern. When you reach any fiddly curves, take care to cut along the correct size lines.

CUTTING LAYOUTS

Choose the correct one for the width of fabric you're using, the

size you're cutting and the style of garment. Many patterns have more than one option (or view) and each one can have a different layout.

CUTTING OUT

Lay your fabric flat and smooth it out. Fold or place the fabric as shown on the cutting layout. Lay the pattern pieces in the order and right side or wrong side up as shown. Check to make sure that the grainlines on the pattern are parallel with the selvages by measuring. Pin your pattern pieces carefully in place and cut around them through the fabric using a pair of dressmaker's shears.

TRANSFERRING MARKINGS

The markings on the pattern pieces need to be transferred to the fabric. They're really important for matching up fabric pieces later and for positioning elements such as darts and pockets. You can mark these with chalk, fabric markers, snips on the fabric, or with small tacking stitches.

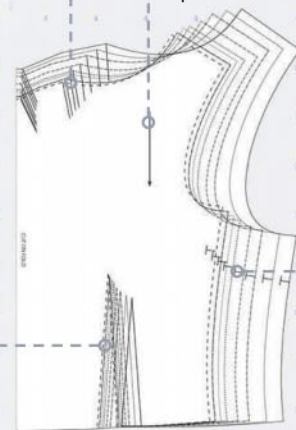
PATTERN MARKINGS

Pleats: These lines are matched up to create pleats on the cut out fabric pieces.

Arrows: Grainline arrows are used to show which direction to pin the pattern on the fabric. The grainline runs parallel to the fabric edge.

Darts: These lines are for matching up to create darts within the fabric pieces.

Notches: Shown as triangles or small lines, these are marked on the edges and are mainly used for matching up pattern pieces.



CHOOSING AND BUYING FABRICS



IT'S IMPORTANT TO CHOOSE the correct fabric for your pattern. Most patterns give suggested fabric types that will work best with the style of garment. Use this to guide you as some patterns need more drape, body or structure than others.

Fabric can be made from natural fibres such as cotton, linen, wool and silk or synthetic fibres such as acetate, acrylic, nylon, polyester, rayon and viscose. All these fabric come in different weights, or thicknesses, which suit different garments.

Lightweight fabrics are ideal for lingerie, nightwear and summer clothing, and include cheesecloth, chiffon, crepe-de-chine, georgette, lawn, muslin, organdie, organza and voile.

Medium-weight fabrics, which work for dresses, shirts, trousers and childrenswear, include calico, cotton, crepe, dupion, linen, poplin and finer wool.

Heavy-weight fabrics are used for garments or projects needing more strength, like coats, jackets, winter wear and bags. Canvas, corduroy, denim, tweeds, velvet and wool are all in this category.

Some patterns require fabrics that are quite fluid and have a good drape to make them hang properly, such as a circle skirt or blouse. Synthetic or synthetic mix fabrics such as rayon, challis, chiffon or lightweight jersey have a better drape to them.

Stretch and knit fabrics such as jersey and lycra are virtually crease free and comfortable to wear. They

can be bought in a variety of thicknesses and qualities depending on their use but are ideal for sportswear and casual clothing.

Interfacing gives an extra layer of support to your fabric – for example, to stiffen facings and collars. Choose an interfacing that's slightly lighter than your main fabric, and if you're using a fusible (iron-on) option then always test it on a scrap of the fabric first as it can melt if the iron is too hot.

Interfacing is available in different weights and as an iron-on (fusible) or sew-in version. With fusible interfacing, press the shiny side to the wrong side of your fabric. Tack sew-in interfacing to the wrong side of the fabric pieces around the edges.

If you're buying fabric off a roll (or bolt) then you'll usually buy it by the metre. This is only the length of the fabric you're buying – the width depends on the width of the roll. Fabrics are sold in standard widths, which vary according to their purpose – for example, dressmaking or quilting fabric generally comes in standard widths of 112cm (44in) or 150cm (60in). Curtain or soft furnishing fabric is normally 137cm (54in) wide and is really useful for bags and aprons as it's thicker and stronger than dressmaking fabrics. The fabric requirements on the pattern instructions will tell you what length of fabric to buy, usually with two width choices. Some patterns, such as large circle skirts, can only be cut from the wider fabrics.

FINISHING SEAMS

ONCE YOU HAVE FINISHED stitching your seam, it's best to press it open on the wrong side so it lies flat. Sometimes it's better to press it to one side to reduce bulk but the pattern instructions will tell you this.

Usually the seam allowances are left as they are as they help to strengthen the seam, but sometimes they cause too much bulk so they are trimmed to half their original width.

If your fabric has a tendency to fray you should neaten the raw edges after you have worked the seam. There are several ways of doing this. To machine-finish them, set your sewing machine to the zigzag stitch then stitch close to the raw edge all the way along. The zigzag must be small enough to stop the fabric from fraying but large enough to enclose the bulk of the fabric. Practise a few lengths and widths before you begin. Alternatively, you can trim the raw fabric edges with a pair of pinking shears. If you have an overlocker then you can stitch, cut and finish the seams all in one process.

MACHINE NEEDLES

There are many different needle types and they vary by the shape of the point, eye and shaft thickness. Choose the correct one for smooth stitching.

UNIVERSAL

A great multi-purpose needle which can be used for woven fabrics and has a slightly rounded point for stitching knit fabrics, too.

BALL POINT

This needle has a more rounded point than the universal needle so you won't get snags, ladders or holes. Perfect for knit fabrics.

JEANS

A strong needle, ideal for stitching several layers of fabric or tightly woven fabrics like denims.

SHARPS

With a sharp point, these are for sewing very fine and delicate fabrics and neat buttonholes.

LEATHER

This needle's wedge-shaped cutting point is used to work strong seams on non-woven fabrics like leather, suede and vinyl.

STRETCH

Designed for sewing two-way stretch knits such as lycra and silk jersey. It prevents skipped stitches on fine knit fabrics.

QUILTING

This will pierce multiple layers whilst keeping straight stitches so it is ideal for patchwork and machine quilting.

TOPSTITCH

This has an extra-sharp point and eye, so thicker topstitching thread can be used. It's perfect for straight stitching with thicker threads on any type of fabric.

TWIN

Used for parallel rows of stitching such as pintucks and hems.

NEEDLE SIZE GUIDE

UK SIZE	US SIZE	FABRIC
60	8	Silks
70	10	Lightweight fabrics
75	11	Medium weight fabrics
80	12	Medium weight fabrics
90	14	Medium weight fabrics
100	16	Heavy weight fabrics
110	18	Upholstery fabrics/denim
120	20	Heavy canvas

GLOSSARY

For a full glossary of sewing terms visit www.simplysewingmag.com

DRAPE

A term used to describe the way a fabric hangs under its own weight. Different fabrics have different drape qualities.

EASE

The addition of extra fabric in a pattern to allow the finished garment to fit the body well.

EDGE STITCH

A row of stitching on the very edge of a garment, usually 2-3mm (1/16-1/8in) from the folded or seamed edge. Used to hold the fabric edge neatly in place.

FACING

This pattern piece is cut separately to stabilise and create a neat finish on the edge of a garment, such as the neckline.

FAT QUARTER

A term used to describe a cut piece of fabric often used for patchwork projects, usually measuring 46x55cm (18x22in).

FINISHING/NEATENING RAW EDGES

This is done to stop the fabric edges, particularly of a seam, from fraying. It can be done by machine zigzag stitch, using an overlocker or trimming the raw edge with pinking shears.

GRAIN/GRAINLINE

The lengthwise fabric grain, running parallel to the selvedge.

NAP

Fabrics like velvet, corduroy and fur have hairs or loops which all lie in one direction and are called the nap, or pile. When cutting out pattern pieces make sure the grainline arrow always runs in the direction of the nap.

NOTIONS

Small tools or accessories used

in sewing such as zips, fasteners, lace and buttons.

RIGHT SIDE (RS) / WRONG SIDE (WS)

The right side of the fabric, also called the 'public' side, has the design on it. The wrong side is the other side – this is usually a little duller or faded on plain fabrics.

SEAM ALLOWANCE

The fabric between the raw or cut edge of the fabric and the seam is called the seam allowance. Your pattern will tell you the required seam allowance measurement. This is usually 1.5cm (5/8in) for dressmaking, but can vary.

SELVEDGE

The finished woven edge of fabric, often with the fabric name printed on it. The grain runs parallel to this and the bias diagonally. Called selvage in the U.S.

STAYSTITCHING

A line of regular machine stitching usually worked 3mm (1/8in) inside the seam line, often used to stabilise curved edges to stop them stretching out of shape.

TACK/TACKING

A line of temporary stitching used to hold fabric pieces together before machine sewing, worked in the same way as running stitch. Known as basting in the U.S.

TOPSTITCHING

A line of stitching worked 5mm (1/4in) from the folded or seam edge. Used to hold the seam in place and as a decorative finish.

UNDERSTITCHING

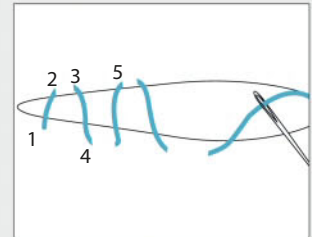
A line of stitching worked through the facing and seam allowance 3mm (1/8in) from the seam to stop the facing rolling to the outside of the garment. Understitching will not be visible on the outside.

STITCH GUIDE

Use these basic hand stitches to complete your home and dressmaking projects.

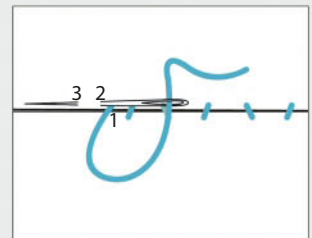
LADDER STITCH

Used to join together and close two turned-under edges invisibly, such as on a dress lining or soft toy. Bring the needle up at 1 on one side of the seam, then in at 2 on the opposite side and out at 3, so the stitch is 3mm (1/8in) long. Push the needle back in the opposite side at 4 and out at 5. Repeat this to close the edges.



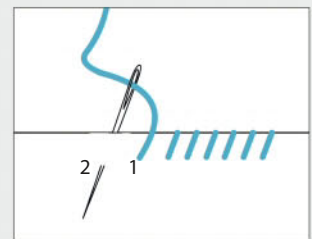
SLIP STITCH

This stitch is used most often for hems where you need to stitch a turned-under edge to a flat piece of fabric using small, almost invisible stitches. Bring the needle up at 1 on the turned-under hem then back in at 2 and out at 3. Make this horizontal stitch as small as possible so it can't be seen from the front. Repeat this by making a vertical stitch back into the turned-under edge then continue in this way to complete the hem.



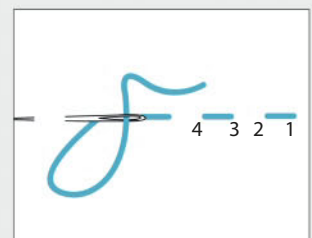
WHIP STITCH

Whipstitch is used to join the edges of two fabrics together, such as felt and other fabrics that don't fray. With the right sides together, bring your needle out at 1 on the front of the fabric, then over to the back of the other, and through and out at 2. Continue to work small stitches close together over the top of the two fabric edges.



RUNNING STITCH

This can be used to gather fabric and as a decorative stitch worked around the edge of a finished project. Bring the needle out at 1, in at 2, then out at 3 and in at 4, and so on. Make the length of the stitches the same length as the gaps between them for an even finish. You can work several running stitches on your needle at once.



From the makers of

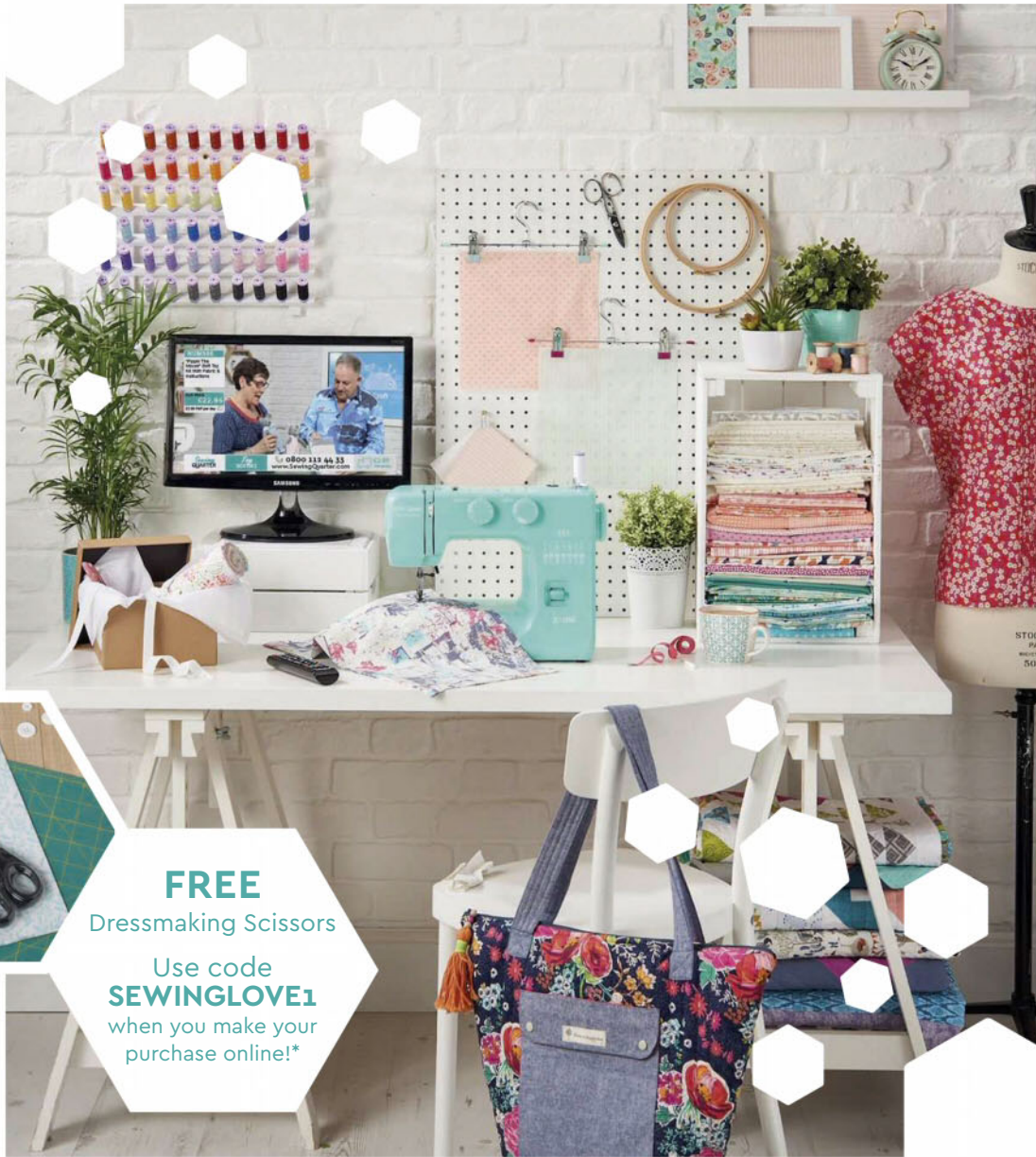
Simply Sewing

LOVE Quilting

TODAY'S QUILTER
Create beautiful quilts for your home

Mollie MAKES

Come on in!



FREE
Dressmaking Scissors

Use code
SEWINGLOVE1
when you make your
purchase online!*

*Offer ends 31st August 2017. Subject to availability. Must be over 18 to redeem. Full terms and conditions on the SQ website.

Sewing QUARTER

Join us live from 8am till 12pm on Freeview 78, or visit
www.SewingQuarter.com

INCLUDES
PATTERN
GIFTS

BACK ISSUES

ONLY
€6.99

INCLUDING
FREE UK P&P



ISSUE 31

Update your holiday wardrobe with a jersey maxi dress, summer tote bag and travel accessories.



ISSUE 30

Join Sew Over It's maxi sewalong (part one) and sew a skirt, Liberty tote and hallway accessories.



ISSUE 29

Make a summer maxi dress, travel accessories and a girl's skater dress and learn machine embroidery.



ISSUE 28

Sew nautical home updates, Liberty gifts, a girl's summer outfit and a staple jersey dress and top.



ISSUE 27

Make a classic shirt dress, party props and Easter gifts and learn how to sew buttonholes and collars.



GET ORGANISED

Each slip case can hold a year's worth of magazines (13 issues) and ensures your growing collection remains in perfect condition for future reference. To order a slip case please visit www.buysubscriptions.com/binder

2 WAYS TO ORDER

Visit the website: www.buysubscriptions.com/backissues
or call us on **01795 414729**

*Lines open weekdays 8am-8pm, Saturdays 9am-1pm. Overseas please call +44 (0)1795 414729. Calls will be charged at your local call rate, calls from mobiles may vary. EUR price €6.99, ROW price £7.99 USA £7.99. Binder price EUR €9.60, ROW €11.50. All prices include p&p. All orders subject to availability. Please allow 28 days for delivery.

Never miss an issue again, turn to page 18 and subscribe today!

NEXT ISSUE



Floaty poncho
Padded hangers
Easy-sew vest
Maternity hack
Colour-block top
Blouse refashion
Elephant toy
Make-up bags
And more...

+ FREE PATTERN

3-IN-1 SET WORTH £8.99!

Collect and sew patterns to make two floaty poncho-style tops and matching vests in sizes 6-20.



ON SALE THURS 10TH AUGUST

WWW.SIMPLYSEWINGMAG.COM



MADE FOR EACH OTHER

Sewing Bee Rumana Lasker Dawood shares the make she's most proud of: the graduation dress she nearly gave up on.

"THIS IS THE SECOND DRESS I HAD EVER made for myself. I've only ever worn this a handful of times, but it's the memories attached to it that make it special.

Before I started sewing I found it really difficult to find ready-to-wear clothes that worked for my requirements (covering my arms and legs, high necklines). Rather than face the high street to find a graduation dress I decided to make one myself. It was probably a bit ambitious of me – until then I had only made one dress and inserted one zipper!

I printed the PDF pattern on the back of old lecture notes and spent the next seven days working away on my mini sewing machine. I accidentally bought a tall pattern (I'm a petite) and hacked my way through the adjustments.

I happily sewed without trying on the dress (rookie mistake) until day five when I realised the fit was completely off. At that point I was ready to pack it in. I even had a back-up dress all the way from Australia! But I convinced myself to keep going. Being so frustrated with the dress had worn away all my excitement, so it was only on the day of graduation that I fell in love with it. I loved the shape, the colour and the fit. I loved that it was a product of all my hard work, even when I felt like I was out of my depth. I loved that it couldn't have symbolised me graduating more. There had definitely been sweat, blood and tears put into getting my degree. The two were, quite literally, made for each other."

Visit www.thelittlepomegranate.co.uk

Stay in touch!



WWW.SIMPLYSEWINGMAG.COM • #SIMPLYSEWINGMAG

[facebook.com/simplysewingmagazine](https://www.facebook.com/simplysewingmagazine) twitter.com/simplysewing [pinterest.com/simplysewingmag](https://www.pinterest.com/simplysewingmag) [instagram.com/simplysewingmag](https://www.instagram.com/simplysewingmag)

Go ahead... get creative!



MC15000

The incredible Memory Craft 15000v2 incorporates all the best features for sewing, embroidery, quilting and craftwork and has the largest work area of any equivalent model available. It's the first machine of its kind to have Wi Fi, the first to work with an iPad and the first to have its own Apps!



MC14000

This long arm combined sewing and embroidery machine has many of the features found on our top of the line Memory Craft 15000 for sewing, embroidery, quilting and craftwork.



MC9900

The Memory Craft 9900 is a combined sewing and embroidery machine. It offers lots of powerful features for sewing as well as professional-style embroidery at home. It also has 3 inter-changeable coloured panels to personalise your machine.



MC500E

The Memory Craft 500E is a dedicated embroidery only machine and offers professional-style embroidery at home, capable of designs up to 200 x 280mm. It's easy to embellish garments, furnishings and accessories.

For limitless embroidery possibilities optional embroidery design software is available which can convert artwork into stitches and stitches into works of art.

**For further information:
Telephone 0161 666 6011 or visit www.janome.co.uk**

The world's leading sewing machine manufacturer

Add a decorative touch of beautiful embroidery to fit your lifestyle

The world of Janome professional style embroidery brings amazing tools to your creative talents. Janome embroidery machines utilise intuitive technologies.



JANOME