

Installing a Hardwood Border and Feature

Extreme How-To

The Enthusiast's Guide to Home Improvement

UPDATE FOR DECK BUILDERS

March 2013 | www.extremehowto.com

\$4.99US \$4.99CAN

03>



PLUS:

GIVING BACK WITH
HABITAT FOR HUMANITY

A ROOF TOP RENEWAL

NEW TOOLS FOR
MEASURING AND LAYOUT



www.MyTGTools.com

YOUR ONE SOURCE SOLUTION

FASTER EASIER CLEANER

KIK® Forstner Bit

KIK® HS Brad Point

KIK® Spade Bit

**135° Split Point start from Contact
3-flat shank, less chuck slippage**

Concrete



Stronger, Faster
Less Walking

High Speed



General Purpose

Titanium
Coated
High Speed



Longer Lasting

Heavy Duty



Heavy Duty
Steel Usage

Solid Cobalt



Heavy Duty
Steel Usage

S&D



Special Use Heavy
Duty Steel Usage

www.MyTGTools.com 1-800-687-4122

TG® Tools • 1010 Cedar Ave. • St. Charles, IL 60174 • ph 800-687-4122 • fax 630-584-4722

This Joint



NEW E•Z Pro™
Mortise & Tenon Jig
lets you make perfectly
matched mortise & tenon
joints with one jig.



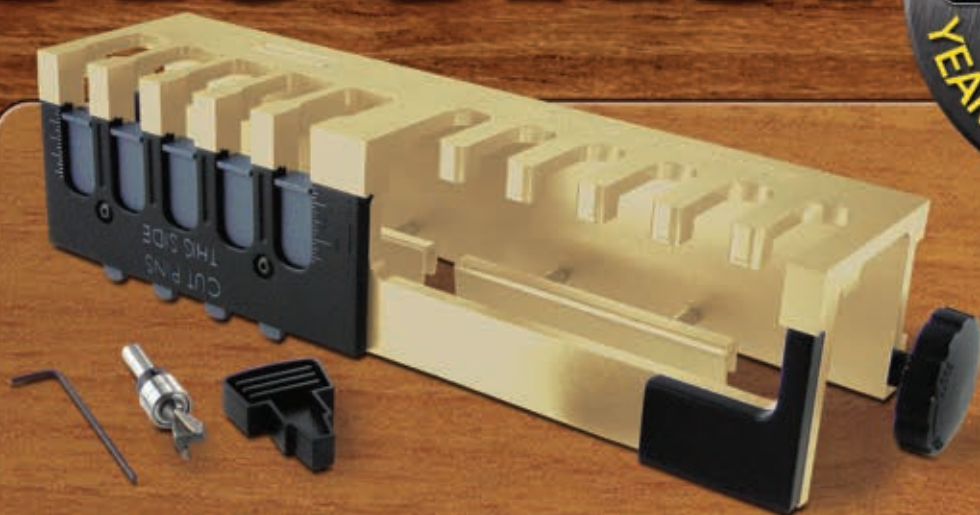
It's your job—General Tools make it easier.



That's what you'll be saying every time you make a wood joint with an **E•Z Pro™** wood-joining jig. Our innovative line covers a broad range of joinery needs with unmatched products like our new **Mortise & Tenon Jig**, **Dovetailer II Jig**, **Doweling Jig**, and award-winning **Pocket Hole Jig**. With these heavy-duty woodworking tools, you can make professional joints *right out of the box!* That's why they're not only ideal for furniture building, cabinet making, and other professional carpentry projects, they're also a joy to use. So this weekend, skip going out to find a rockin' joint—head to your shop and make some rockin' joints of your own.

For more information on General's new Mortise & Tenon Jig and the rest of our E•Z Pro™ line of innovative wood joining jigs, visit: **generaltools.com/woodjig**

Rocks!



**The E•Z Pro™
Dovetailer II Jig**
lets you make
dovetail and box
joints – through
or half-blind.



**The E•Z Pro™
Pocket Hole Jig Kit**
has everything you
need to make flush,
corner and angle
pocket hole joints.



**The E•Z Pro™
Doweling Jig**
lets you make perfectly
aligned dowel joints
every time.





www.MyTGTools.com

YOUR ONE SOURCE SOLUTION

FASTER EASIER CLEANER

KIK® Forstner Bit



KIK® HS Brad Point



KIK® Spade Bit



135° Split Point start from Contact
3-flat shank, less chuck slippage

Concrete



Stronger, Faster
Less Walking

High Speed



General Purpose

Titanium
Coated
High Speed



Longer Lasting

Heavy Duty



Heavy Duty
Steel Usage

Solid Cobalt



Heavy Duty
Steel Usage

S&D

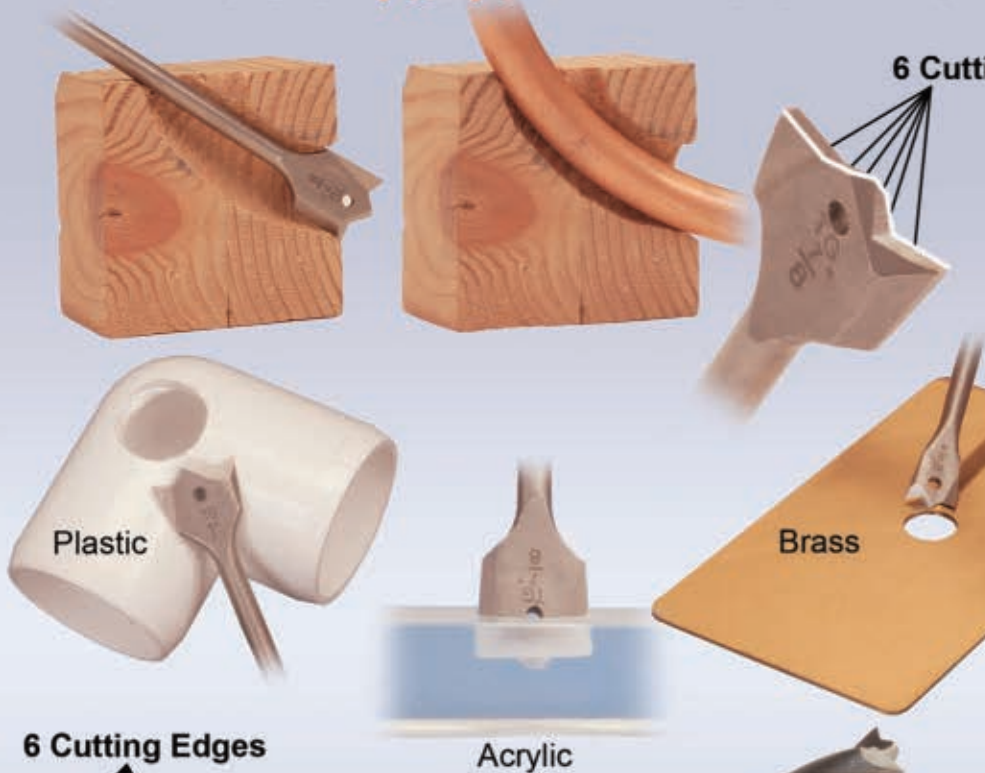


Special Use Heavy
Duty Steel Usage

www.MyTGTools.com/kik1.php 1-800-687-4122

TG® Tools • 1010 Cedar Ave. • St. Charles, IL 60174 • ph 800-687-4122 • fax 630-584-4722

We Put a **KIK**[®] in Your Boring Tasks!



6 Cutting Edges

The revolutionary **KIK**[®] Spade Bit has over 30% more cutting surface making them much faster and longer lasting than standard spade bits. There is no protruding tang to bend or break allowing these bits to even bore non-ferrous sheet metals and curved holes too! Tested and Proven Superior by an Independent Lab.

6 Cutting Edges



Acrylic

Brass

KIK[®] HS Brad Point

Independent Lab Tested and Proven
Designed for Drilling Sheet Metal, Wood and Plastic Faster, Cleaner with Longer Life and no Walking on the Surface.

In Wood:

- **Approximately 100% Faster** Compared to Common Brad Point
- **40% Faster** Compared to Standard Drill Bits

In Sheet Metal:

- **50% Cleaner Entry**
- **Consistently Round Hole**
- **20% Less Walking**

In Acrylic:

- **No cracking** Drilling Acrylic
- **150% Faster** Compared to Standard Drills
- **690% Faster** Than Other Brad Points

KIK[®] Forstner Bit

Proven Superior by an Independent Lab
Cleaner Entry and Exit

9 Cutting Edges
3 on Each Blade



- **Titanium Coated**
- **3-Flat Shank**
Open Head Design for no Clogging
Easy Drilling and Direction Control

- **Bores through Hard Woods 100% Faster** Compared to Standard Forstners

- **Bores Mills Routes Cuts**
- **Bores Curved Paths Channels**

- **Bores Through Acrylics Cleanly Without Melting**
Able to Bore 90 Degree Curved Paths

www.MyTGTools.com/kik1.php **1-800-687-4122**

TG[®] Tools • 1010 Cedar Ave. • St. Charles, IL 60174 • ph 800-687-4122 • fax 630-584-4722

CONTENTS

March 2013



Best Prices
Hardwood Floors starting at **89¢** sq.ft.

Highest Quality
The longest warranties on the market

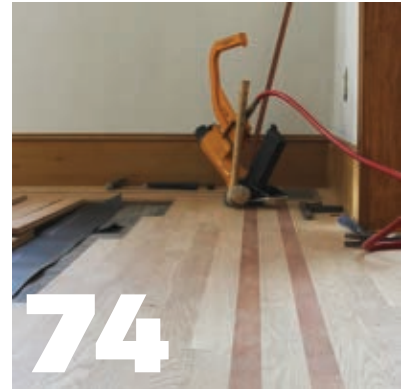
Biggest Selection
340+ varieties to choose from

Expert Advice
Flooring experts in every store

Casa de Colour - Walnut Hickory



HARDWOOD FLOORS FOR LESS!
LUMBER LIQUIDATORS
www.lumberliquidators.com
1-800-HARDWOOD



FEATURES

34 Tearing Down and Giving Back

Keeping Building Materials Out of the Landfill with Habitat for Humanity

46 Update for Deck Builders

Building Code Changes, plus New Products and Materials

74 Feature Presentation

Installing a Hardwood Border and Feature

STOPS LEAKS HERE



...AND HERE

Touch 'n Foam sealant products actually pay you back by keeping heat and A/C in the house where it belongs.

SEAL YOUR HOME WITH

Touch 'n Foam

- Fills gaps and cracks
- Stops drafts and energy loss
- Indoor and outdoor applications

Use smartphone scan or visit www.touch-n-foam.com for energy saving tips, to calculate your potential payback, and to find a retailer near you.



ENERGY TAX CREDIT ELIGIBLE

**CONNECT RAILS & POSTS
IN JUST MINUTES**

SPRING BOLT™
THE Strongest Surface Mount
Railing Hardware Available



QUICK
Cut installation
time by 60%

STRONG
Unmatched
strength for both
interior and
exterior use

EASY
Less drilling, less
sanding, no wood
plugs and completely
hidden when installed

available at
www.spring-bolt.com & www.homedepot.com
1.800.HOMEDEPOT

SPRING BOLT™
The Improved Wood Rail &
Newest Post Fastener



Thermalox
STOVE PAINT



www.stovepaint.com
(800) 537-7023

CONTENTS

EVERY ISSUE

- 8 From the Editor**
- 103 Advertisers Index**

COLUMNS


- 10 Q & A**
- 14 Tool School**
New Tools for Measuring and Layout
- 26 Material Market**
Transforming a Porch Ceiling

DEPARTMENTS

- 88 Project Next**
A Roof Top Renewal
- 96 Everything Auto**
Fresh Juice
- 102 Hot Products**



Cover photo courtesy of TimberTech



You've done your homework.

You've got your **GAME PLAN** and today is **GAME DAY.**

Don't let an inferior fastener come between you
and the **LEGACY** of a well-built deck.

GO ÜBERGRADE™ - IT'LL BE WORTH IT



GRKFASTENERS™
ÜberGrade™

800/263-0463 - GRKFASTENERS.COM

2013 IBS — visit us at Booth #N2316



For homeowners with a taste for the contemporary, a recent report projects the top home design and remodeling trends for 2013. The Neil Kelly Company, an award-winning design-build remodeling firm based in Oregon, enlisted a team of 20 experienced design professionals to come up with the top trends.

"While every homeowner has specific ideas on style, the overall trend is toward simpler living and low-maintenance design," the company reports, "but with accent marks of color and splash that don't overpower ... from clean and simple kitchen cabinetry to 'bulletproof' countertops, pre-finished wood flooring and solid 'pops' of glass, color and sparkling textures. The trend toward simplicity is also manifested in a growing demand for safer, healthier and more sustainable homes."

Here's a glimpse at the top 10 trends so you can beat your neighbors to the punch:

Kitchen Cabinets. "A clean, simple, contemporary look will be popular with homeowners looking to economize and eliminate unnecessary clutter and fussy details." For a budget-friendly remodel, re-facing or refinishing cabinets will offer more bang for the buck.

Countertops. "While granite isn't going away and still has many die-hard fans, the new king of countertops will be quartz composite—the closest thing to no-maintenance, bulletproof countertop materials available today.

Hardwood Floors. "Pre-finished and engineered wood flooring will become more popular than the once gold-standard of site-finished flooring. Pre-finished woods provide a hard, durable finish, are an installation time saver, and eliminate the sanding dust dilemma."

Glass Backsplashes. "Glass mosaic tile is on the way out. Taking its place are glass/stone/tile mosaic composites that can add more texture and visual interest and that tie in more readily with stone or quartz countertops."

Simple Sinks. "With accessories such as fitted colanders and dish drains, deep single-bowl sinks have all the benefits of a divided sink, plus the large size. Stainless is still popular, but the quartz composites are a great value and durable option."

Color Palette. "Charcoal is the new black. 2013 will find this silky color everywhere as it blends the right amount of chocolate, grey and a touch of green."

Bathroom Stone. "Calacatta marble will find its way into both traditional and contemporary bathrooms. Calacatta is a rarer stone than Carrara marble, but is quarried in the same region. It is valued for a whiter background and bolder grey veins.

Texture and Sparkle. "Glossy glass tile backsplashes and sparkle on polished nickel fixtures trend in 2013."

Living In Your Home Longer. "Designers predict a growing trend to help aging baby boomers safely 'grow old' in their homes, for as long as possible. Watch for easy kitchen and bath upgrades to enhance functionality, comfort and safety."

Healthy Living. "Green and sustainable design is here to stay. More homeowners are taking advantage of federal and state incentives to evaluate their home's energy efficiency and overall performance. Upgrade trends include the use of low-VOC materials to improve indoor air quality, testing combustion safety and radon mitigation."



EDITOR-IN-CHIEF
Matt Weber
mweber@latitude3.com

ADVISORY BOARD
Monte Burch
Rob Foster
Kathy Ziprik
Mark Clement

CREATIVE DIRECTOR
Wesley Glassco

CIRCULATION
Jennifer Pentecost

PUBLISHER
Jeremy Hollingsworth
jhollingsworth@latitude3.com

SENIOR ACCOUNT EXECUTIVE
Jan Logan
jlogan@latitude3.com

ADVERTISING SALES
Martin Smith
msmith@latitude3.com

Jonathan White
jwhite@latitude3.com

ONLINE MEDIA ASSISTANT
Sonia Griffin

BUSINESS MANAGER
Dusty Statham

SUBSCRIPTIONS
Customer Service
888-587-8911

PRESIDENT
Trent R. Boozer

EXECUTIVE VICE-PRESIDENT
Chad Gillikin

EXECUTIVE VICE-PRESIDENT
Val Carrier

Extreme How-To is published by
LATITUDE3 MEDIA GROUP, LLC
1111 Edenton Street
Birmingham, AL 35242
Phone 205.949.1600 • Fax 205.949.1601
www.extremehowto.com

Extreme How-To (ISSN 1540-5346) is published and distributed monthly to DIY home improvement enthusiasts by Latitude3 Media Group, LLC, 1111 Edenton Street, Birmingham, AL 35242 (executive and editorial offices). All rights reserved. Neither this publication nor any part of it may be reproduced, stored in a retrieval system, or transmitted in any form or by any means, electronic, mechanical, photocopying, recording, or otherwise, without permission of Latitude3 Media Group, LLC. Subscriptions: U.S. and possessions: 1 year (9 issues - \$18.97); foreign, 1 year (9 issues - \$32.50) U.S. funds only. POSTMASTER: Send address changes to: Extreme How-To P.O. Box 4320, Oregon, IL 61061. SUBSCRIBER SERVICE: To order a subscription or change your address, write to Extreme How-To P.O. Box 4320, Oregon, IL 61061, or call 888-587-8911; or E-mail to ehtw@pubdmgroup.com; or visit www.extremehowto.com. To order back issues, call (205) 949.1603.

The information in **Extreme How-To's** editorial content is intended to explain and simplify home-improvement tasks. Tools, products, materials, techniques, building codes and local regulations change; therefore, **Latitude3** assumes no liability for omissions, errors or the outcome of any project. The reader must always exercise reasonable caution, follow current codes and regulations that may apply, and is urged to consult with a licensed professional if in doubt about any procedures. **Printed in the USA**

ROBO REEL®

MOTORIZED POWER CORD SYSTEM
NO MORE KNOTTED OR TANGLED CORDS.

WINNER
OF THE
BUSINESSWEEK AND
IDSA GOLD DESIGN AWARD

IDSA
INTERNATIONAL DESIGN ASSOCIATION

BusinessWeek

CEILING



ONE TOUCH

AUTOMATICALLY
RETRACTS
THE POWER CORD



ONLINE
VIDEO

PORTABLE



1-888-GR8-STUFF

50FT
12GA
15AMP

WWW.ROBOREEL.COM



One-Touch Retraction

Winds in the cord automatically with a touch of a button on the unit or cord end.

No 'whipping action' on retraction.



360° Rotation

Allows RoboReel to be your central power hub with no more knotted or tangled cords.



Light Weight & Portable

Designed to be easily moved to where it is needed, or mounted to a bench or wall.



Power Sensor

Will not accidentally rewind while power tool is in use.



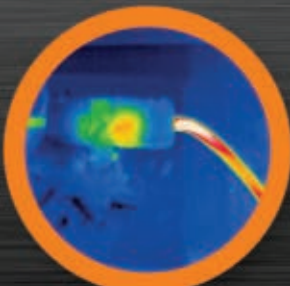
Premium Lead-Free Cord

Engineered to resist "corkscrewing" and extend the life of the cord.



Stops When Obstructed

Motor stops if it senses obstructions during rewind, preventing damage.



Reduces Fire Hazards

Dual thermostats and circuit breaker help prevent overheating and fire.



Emergency Power Shut-Off

Power shuts off immediately if cord is completely severed to prevent electrical injuries.

Q. What's the best way to remove pencil marks from the pieces of a woodworking project? Sanding seems unnecessarily abrasive, while using an eraser tends to smear the markings and cause an even bigger mess.

A. Try using denatured alcohol. Dampen a rag and lightly wipe away the graphite from the wood surface. This makes the wood easier to clean up before finishing, and the alcohol will not raise the woodgrain the way that water can.

Q. I built a coffee table and would like to finish the wood with a clear coat. My neighbor recommends that I first seal the wood before applying the clear coat. Is this necessary?

A. Using a wood sealer, such as clear shellac, penetrates deeply into the wood fiber to encourage a more even top coat by preventing the wood from absorbing finish at different rates in different spots. The sealer flattens the wood surface and improves the adhesion of the top coat. Apply the sealer with a brush or sprayer, allow it to dry and then lightly sand with a very fine-grit abrasive, before applying the top coat. A single coat of sealer should suffice.

READY SEAL

STAIN AND SEAL LIKE YOU MEAN IT.

Protect, beautify and prolong the life of any outdoor project with Ready Seal®, the professional-grade stain and sealer in one. Ready Seal goes on with no laps, runs or streaks for perfect results, every time. Available in one and five-gallon sizes.

MAHOGANY-030 DARK WALNUT-025B REDWOOD-020

GOLDEN PINE-100G LIGHT OAK-005 NATURAL CEDAR-012 PECAN-015B

ORDER ONLINE OR BY PHONE
www.ReadySeal.com | 888.STAIN4U

Scan this code with your smart phone QR reader to view our website.

Don't rip it out. RegROUT!™



This new tool is not only the most effective grout removing tool on the market, it's also the most economical and least likely to damage tiles. The HYDE® RegROUT™ Tool is safe and easy to use. It can be adjusted for the speed and precision required for deco insert tiles, liners, V-caps, quarter-round and 90° corners.

The HYDE® RegROUT™ Tool

- Removes grout at up to 1" per second
- Removes sanded or non-sanded grout up to 1/8"
- Will not damage tiles
- 3-speed control



For a better finish, start with HYDE.®

www.hydertools.com • 800-872-4933

Q & A Got a?

Questions About Home Building, Remodeling? Have Your Own How-To Tip? Visit our blog at blog.extremehowto.com and click on Ask Our Experts.

Q. My kids have torn a towel rack off the bathroom wall twice. The mounts are not located over wall studs, so I've been using toggle bolts to fasten the rack, but do you have a stronger recommendation?

A. You might consider fastening a hardwood board roughly the size of your towel rack into the wall studs at the location where you want to hang the rack. Then, screw the mounts securely onto the hardwood rather than into the drywall.

The hardwood board can be routed with a decorative edge, stained or painted to your preference.

Q. I'd like to get an early jump on this year's gardening. What edible plants are suited for sowing in March?

A. Unless you live in a very cold climate, March is a good month to start sowing seeds for hardy plants such as leeks, peas, parsnips and spinach. In case of a late cold spell, you might consider sowing them indoors this month and planting them the next. March is probably your last chance to plant fruit trees and bushes, such as apples, pears, blueberries and blackberries. It's your last chance for garlic, too. You can also get a jump on lettuce, onions, radishes and other salad crops. Asparagus can be grown from seed, but it's easier to use ready-to-plant rootstocks called "crowns," which can be planted in trenches in March or April. **EHT**

STANDARD PAINTS, INC.
Wood Defender™
Guaranteed Fence And Deck Sealer

Specifically formulated for ease-of-application, Standard Paints exterior **Wood Defender™** stains help protect and beautify wood structures. With **one coat** you are assured of **uniform application** with **no runs, drips or back brushing**. Mildew resistant, Wood Defender stains contain ultraviolet inhibitors to stabilize wood color and provide long lasting wood protection. **Our products, techniques and equipment are proven by hundreds of successful applicators that we have trained.**

MADE IN THE U.S.A.

INQUIRE ABOUT EQUIPMENT, START UP PACKAGES AND TRAINING. REGISTER TODAY!

WWW.WOODDEFENDER.COM • (817) 477-5060 • (817) 477-5030

STANDARD PAINTS, INC. 940 S. 6th Ave. Mansfield, TX 76063

PROFLEX HYDRA SEAL

PROTECT YOURSELF FROM WATER DAMAGE!

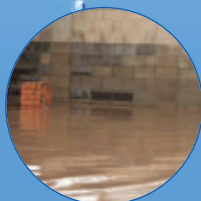
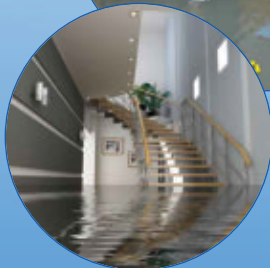
Severe water damage and flooding affects **one in four homes** during a typical 30 year mortgage. Statistically, you are **3 times more likely** to have a major water intrusion than a fire.

Often times there is little that can be done to prevent a flood or water intrusion. But you can take steps to protect surfaces from water damage and to minimize structural repairs after the water is gone.

PROFLEX™ HYDRA SEAL is a semi-fluid applied product designed for waterproofing and moisture control applications.

HYDRA SEAL can be applied to concrete and exterior grade wood surfaces, and will adhere to a variety of irregular forms such as base flashing and walls.

Ideal for use in showers, steam rooms, bathrooms, and areas requiring positive waterproofing.



PROFLEX HYDRA SEAL

877-PROFLEX (877-577-6453)
www.proflex.us

- APPLIES EASILY WITH BRUSH OR NAP ROLLER
- CRACK ISOLATION TO 1/4"
- POSITIVE WATER-PROOFING PROTECTION
- EXCEEDS ANSI 118.10 REQUIREMENTS
- EXCEEDS ASTM C-836-89 REQUIREMENTS



New Tools for Measuring and Layout



The 419D also performs quick calculations of area (square feet/meters) and volume, and includes an easy-to-use addition and subtraction function. Plus, the compact carrying pouch secures to a tool belt. Visit www.fluke.com.

DIGITAL SLIDING T-BEVEL

The new Digital Sliding T-Bevel (828) from General Tools & Instruments takes the guesswork out of angle measurement and duplication, and eliminates the confusion associated with interpreting analog readings and transferring manual measurements. According to the company, General's Digital Sliding T-Bevel is the first and only digital T-bevel on the market. It's perfect for measuring, storing and transferring inside and outside angles for carpentry, cabinet building, tile installation and more. It operates as both a digital T-bevel and a protractor, offering easy-to-read angle measurements via a large LCD and integrates an 8-in. stainless steel blade with a steel locking knob. The Digital T-Bevel can measure angles ranging from 0° to 360° in any plane to an accuracy of +/-0.3°. It also features function buttons for zero calibration, hold/reverse, flip viewing, auto shut-off and a two-year battery life.

Visit www.generaltools.com.



By Matt Weber

What can be said about the importance of accurate measuring? Without it, our buildings sure would look funny. Here's a handful of some of the latest measuring devices to help keep your projects plumb, level, square and true.

FLUKE 419D LASER DISTANCE METER

Fluke offers three professional-grade laser distance meters: models, 414D, 419D and 424D. The *EHT* staff tested the 419D, which can instantly measure distance at

the push of a button. Our field testers were impressed with the range of the 419D, which utilizes a laser beam to measure a target up to 260 feet away—more than enough for most serious DIY and professional projects alike. With accuracy of +/- 1mm, it saves time and reduces errors and includes enhanced features such as a 3-line backlit display, plus memory storage for 20 complete measurement displays. When in tripod mode the mountable laser provides easy targeting for stable, long-distance measurements.

Does your wood need a **MAKEOVER?**



**Restore your
outdoor
living space.**

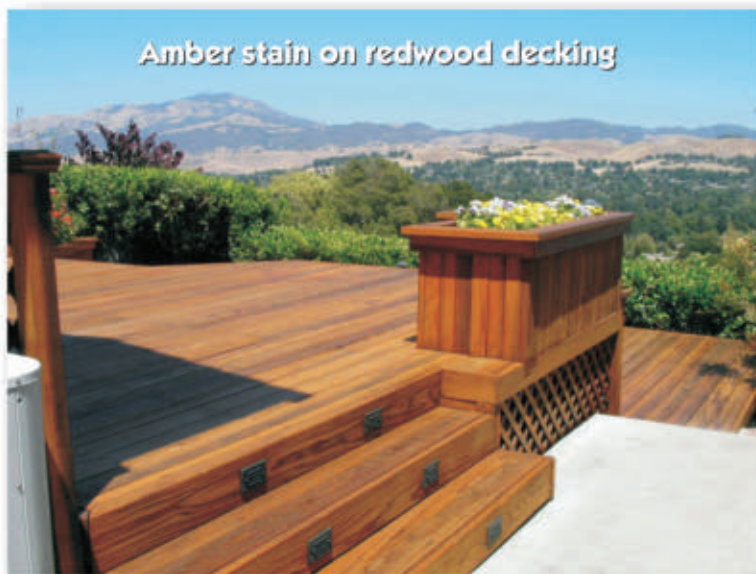
**Put some
WOW in
your wood!**

**“Long Lasting,
Easy to Apply
and a Breeze
to Maintain”**

— Alan Broom,
Professional Wood Restoration Expert
www.shinebritellc.com

**Shipped
Directly to
Your Door**

**For FREE sample cans,
call (800) 916-8211**



ARMSTRONG'S WOOD STAINS



Manufacturers of VOC-Compliant, Oil-Based Wood Finishes
www.armclark.com • (800) 916-8211

PLEASE VISIT THE WEB'S PREMIERE SITES FOR OUTDOOR WOOD RESTORATION TOPICS AND DISCUSSIONS,
www.thegrimescene.com/forums/content www.thewoodpros.com

LASQUARE

The combination square has long been a toolbox staple, but LaGessee Products has smartly redesigned the concept with a 2-in. wide base that can be used on oddly shaped materials such as round or square tubing, handrails, pipe, crown molding, cement blocks, wooden posts and many other materials. Made entirely in the U.S.A., the LaSquare's patented design makes jobs easier, reduces work time and eliminates the need for extra tools. The extra-wide aluminum base adds stability and offers true line accuracy on multiple contact points. Equipped with a built-in level and a stainless steel blade that is fully hardened and tempered, the LaSquare features a satin chrome finish with precisely etched graduation marks in standard measurements. Visit www.lagesseproducts.com.



S15 SPRAY-PRO[®] Ground Driven Push Sprayer

Features:

- ✦ SPRAY-PRO[®] high-speed pump
- ✦ 5gal/22L tank capacity
- ✦ 10" Pneumatic wheels
- ✦ Fully assembled steel chassis
- ✦ 3 Interchangeable nozzles

For information, call 1-800-294-0671 or visit www.earthway.com to find a dealer.



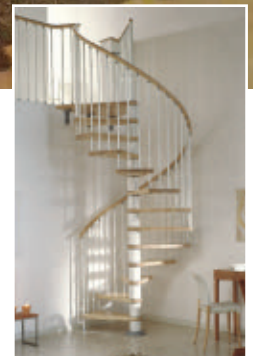
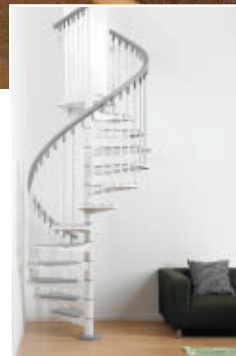
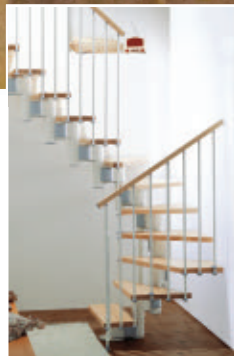


arke
fontanot

SPIRAL STAIRS AND MODULAR STAIR CASE KITS

AVAILABLE THROUGHOUT
THE USA, ARKE SPIRAL
AND MODULAR STAIRCASE
KITS CAN BE BUILT IN A
DAY BY THE AVERAGE
DO-IT-YOURSELF HOME
ENTHUSIAST.

THE KARINA MODULAR SPACE SAVER STAIRKIT IS A UNIQUE AND
STYLISH SOLUTION FOR NARROW ACCESS AREAS, SUCH AS LOFTS
OR ATTICS, WITHOUT COMPROMISING FUNCTIONALITY.



ARKE MAKES BUYING AND INSTALLING A SPIRAL STAIR CASE EASY WITH THE FOLLOWING KEY FEATURES:

- ALL-IN-ONE COMPLETE UNITS: TREADS, LANDING, BALUSTERS, HANDRAILS, HARDWARE AND ACCESSORIES INCLUDED
- NOTHING TO PAINT, WELD, STAIN OR SEAL
- IN STOCK FOR IMMEDIATE DELIVERY

www.arkestairs.com



DIGITAL FRACTIONAL CALIPER

Our groundbreaking Digital Fractional Caliper (147) brings you three universal systems of measurement, making it an equally practical choice for both professional and DIY metalworking, woodworking and mechanical engineering projects. The perfect device for measuring the distance between two opposite sides of an object, the high-contrast digital display easily switches between inches, milli-meters and fractions, with guaranteed accuracy to 0.001. The rugged stainless steel design delivers accurate readings of inside, outside, step and depth measurements. The unit also comes with a foam padded plastic case for safe storage. Visit www.generaltools.com.

DON'T GET STOPPED BY A DULL BIT AGAIN

SHARPEN DRILL BITS WITH EASE

WATCH DEMO 

DRILLDOCTOR.COM

- Easy to use and works every time
- Models priced to fit every budget and sharpening need
- 3 Year Warranty
- Sharpens from 3/32" to 3/4"
- Carbide, HSS, Cobalt, Titanium



Drill Doctor
The Drill Bit Sharpener

JOHNNY SQUARE

A layout square is an incredibly handy tool for professionals and DIY'ers alike. What makes a layout square so useful is its simple and versatile design, serving as five tools in one; a Try Square, Miter Square, Protractor, Line Scriber and a Saw Guide. Johnson Level now offers their own version of the layout square, the Johnny Square, which offers the unique feature of continuous 1/8-in. pencil notches specially marked for scribing 2x4 and 2x6 rip cuts. Plus, the square has an integrated bottle opener, which turns out to be a welcome feature at the end of most EHT projects. Visit www.johnsonlevel.com.



JOHNSON

Another **BRIGHT IDEA...**



1707 Series

...from Johnson Level


Glo-View® technology naturally illuminates vials
for hassle-free leveling

Built **JOB SITE TOUGH™** for unbeatable durability

Domed level vial offers 360° visibility

Large “soft touch” comfort grip hand holes

Expect accuracy with a **LIFETIME WARRANTY**

For FREE tool giveaways, visit Johnson Level on 

See our complete line of levels with Glo-View® at www.johnsonlevel.com.



1708 Series
available with:



RARE EARTH
5X STRONGER MAGNETS

STARRETT MEASURING & LAYOUT TOOLS

When it comes to measuring critical dimensions, generations of craftsmen and toolmakers have relied on Starrett tools, with proven quality and expert tech support. Invented by Laroy S. Starrett in the 1870s, the Starrett Combination Square consists of a hardened steel graduated rule with a movable combination head, precision ground with a 90° square face and a 45° miter face. It's an excellent tool for many measurement and inspection



tasks, including checking ends and edges for squareness, drawing layout lines, checking miter angles, calibrating blades, setting cutting depths, measuring dadoes and much more. These days Starrett also offers a diverse selection of pocket tapes, levels, protractors, utility knives, hole saws, and blades for jigsaws and reciprocating saws. Visit www.starrett.com.

Make it straight and true, every time.

Big job or small, it's easy to do a great job the first time with a **CHECKPOINT Professional Level.**



EV600 Laser Level is a rugged, compact and loaded with features.



EV300 Level is perfect for the Do-It-Yourselfer that takes pride in their work.

CHECKPOINT
PROFESSIONAL LEVELS

Designed for the professional, priced for the Do-It-Yourselfer!

www.checkpointlevels.com • 818-686-3466

TRAIL VAC

Quality Lawn Vacuums, Lawn Equipment, & Lawn Accessories



The 520C Trail Vac has a 5.5 hp engine and a fabric cover that assures long life. It expands collection capacity to 20 cubic feet.

For more info call:

Palmor Products, Inc.

1-800-872-2822 or visit us on the web at www.trailvac.net

THE NEXT BIG THING IN PROTECTING YOUR NEXT BIG THINGS.



The New Touchscreen Deadbolt.

With features like a built-in alarm, keyless entry and Nexia™ Home Intelligence compatibility, what's on your doors is now as advanced as what's inside them.

Learn more at Schlage.com.



GENERAL LASER DISTANCE METER

The new Laser Distance Meter (LDM60) from General Tools & Instruments quickly and accurately measures length, width and

height, and easily determines area and volume. With its superior accuracy (+/-0.06 in. / 1.5mm), the LDM60 eliminates errors and typically saves professionals enough time and labor to pay for

itself after the first use. It turns a two-person job into a one-person job and prevents the hassle of rearranging rooms for measuring. The average measuring job can be completed in about one third the time needed to use a tape measure—and with much greater precision. Plus, the LDM60 is priced considerably below competitive products and features a measurement range up to 200 ft., with distance displays in feet or meters via a large backlit four-line LCD. It offers a fast response time of 0.33 seconds. Operating modes include addition, subtraction, continuous measurement (tracking) and min./max. distance to a reference along with a 20-measurement memory. The LDM60 comes with a tool belt holster and a three-year warranty. Visit www.generaltools.com.

SANDS
— SINCE 1895 —
THE FIRST NAME IN LEVELS
MADE IN USA

Making professional-quality levels in the USA for 118 years

Aluminum Levels, Wood Levels, Squares, Straightedges and Tools

Sands® Solid Set Cat's Eye Yellow double bent level vials
Accurate to .0004" per inch

For the complete line of products, visit www.KraftTool.com

Sands® is a Kraft Tool Co.® brand





Our reputation is on the line with **EVERYTHING** we make!

Maze Nails is America's Largest Manufacturer of Specialty Nails

Ultimate corrosion resistant nails in double hot-dipped galvanized and stainless steel for the following applications:

- ★ FIBER CEMENT SIDINGS AND TRIM
- ★ CEDAR AND REDWOOD SIDINGS
- ★ PRESSURE TREATED LUMBER
- ★ FENCING
- ★ POST FRAME BUILDING
- ★ ROOFING
- ★ GUTTERS AND TRIM
- ★ PVC MOLDINGS AND TRIM
- ★ DECKING
- ★ LOG HOMES AND TIMBER FRAMES



Use the **RIGHT** nails to get the **BEST** performance!

1.800.435.5949

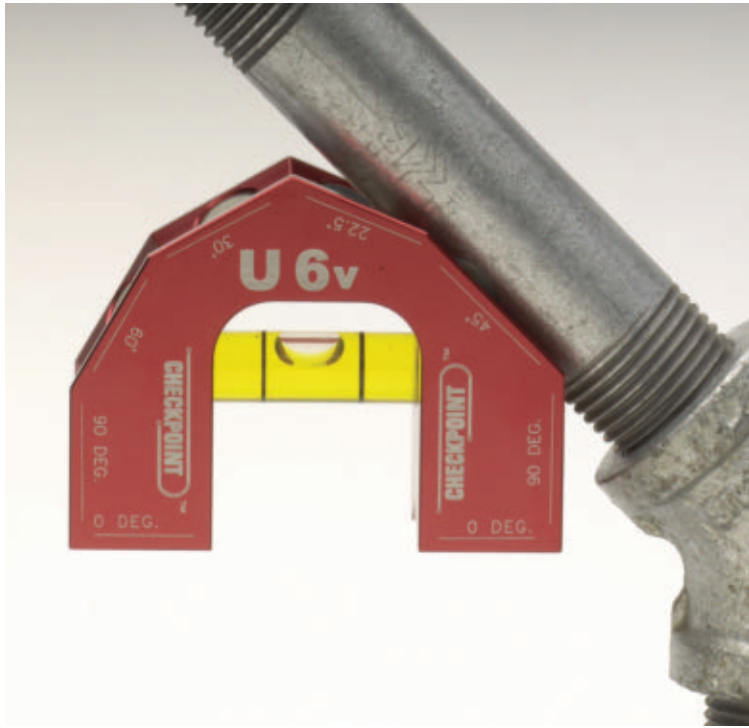
Division of W.H. Maze Company

Helping to build America since 1848

Get to mazenails.com **FAST!**

Scan this barcode using an application on your mobile device.





CHECKPOINT U6 LEVELS

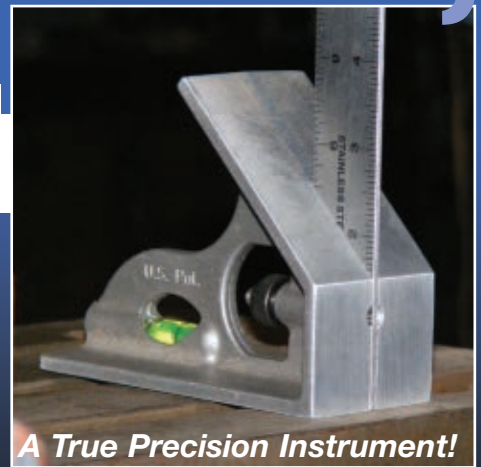
Checkpoint's U6 Levels—both the standard Multi-Reading Level, and the U6 V-Groove—are made from solid aircraft-grade 6061-T6 aluminum billet that's CNC-machined into its unique shape to read at 0, 22.5, 30, 45, 60 and 90 degrees. A precision bubble vial is the heart of the U6, and eight rare-earth neodymium magnets are used to keep the U6 rock-solid on virtually any ferrous surface. A high-quality anodized finish and laser-etched graphics make the U6 Levels ready to go right out of the box. And for those who need extra versatility, the Checkpoint U6 V-Groove has a unique design that allows it to mount securely onto pipe and conduit, fencing and much more. Measuring just 2-1/2 by 1-3/4 by 3/4 inches, the U6's patented design is compact enough to work in the tightest job conditions—from ductwork and plumbing in confined space, to table layouts and on-site setups that demand close tolerances. Plus, the U6 is small enough to fit in your pocket. Visit www.checkpointlevels.com.

**MEASURE ONCE,
CUT ONCE.**

Our 2" WIDE BASE combination square is the only square you will ever use again!

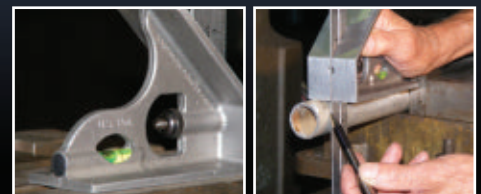
WIDER IS BETTER:

- Reduces Work Time
- Makes Difficult Jobs Easier
- Overcomes Short Comings of Traditional Squares
- Eliminates Need for Extra Tools
- Used in All Trades
- Extra Wide Precision Aluminum Base
- Flush Mount Rule
- Precision Ground Machinist Blades Available in 12", 18" & 24"
- Designed for the Professional



A True Precision Instrument!

Patented Design | Made in the U.S.A.



ONLY available online at www.lagesseproducts.com/squares



GENERAL DIGITAL ANGLE FINDERS

The new 5- and 10-in. Digital Angle Finders (822 & 823) from General Tools are time-saving tools that easily and accurately measure inside, outside and reverse angles. Features include digital readout, twin rules graduated in inches and millimeters, reverse angle and hold buttons, and a locking knob. Both tools are ideal for framing, custom furniture-building, stair and patio construction, flooring, tiling—a wide range of woodworking, carpentry and contractor needs. Visit www.generaltools.com. **EHT**



NEW

**Introducing
Starrett, Starrett Exact and Starrett Exact Plus**

**Measure twice...
~~once~~**

What company always measures up?



See the entire new hand tool line!
www.starrett.com



starrett.com

Starrett®
Innovation Rules

Transforming a Porch Ceiling

Synthetic building materials create a new porch ceiling with rustic woodgrain beams.



The home Roth worked on was originally built in the Civil War era in Hillsdale, Michigan. To renovate an 8-ft. wide by 19-ft. long front porch area he used stainable woodgrain urethane pieces from the Fypon Stone and Timber Collection (www.fypon.com). Roth selected the urethane pieces due to their durability, low-maintenance appeal and style—all of which were important considerations for the rehab that will now be used as a rental property.

STEP-BY-STEP

Step 1

Roth ordered six Shutter 5-Board Panels (SH5P30x144S), five decorative faux beams in mesa style (BMM6x8x144s) and 10 decorative beam straps with four bolts (BMSTRPM6x8) plus premium millwork adhesive for the project. Once they arrived, he painted the pre-primed pieces prior to installation.



The faux timber beam from Fypon is made from high-density urethane, which resists shrinking, splintering, rotting and swelling.

Contractor Steve Roth wanted to give new life to an old porch, so he turned to innovative urethane products. To transform a decaying oriented strand board ceiling, Roth first added Fypon polyurethane board panels to cover the entire ceiling and then faux beams and straps to create a lodge-style look.

“Working with the Fypon products in the past I’ve found they’re a creative solution to easily creating unique looks on the home,” says Roth. “These high-density urethane products don’t have the problems inherent with wood products, like shrinking, splintering, rotting and swelling, so they’re a joy to work with and provide lasting results.”

Hi-Velocity Systems™

Looking for Superior Indoor Air
Quality in *Every Room*?



- Quiet Operation
- Constant Air Circulation
- Easy Installation & Maintenance
- Space Saving Small Diameter Ducts
- Superior Heating, Cooling and IAQ
- Programmable Energy Smart Motors
- Eliminate Hot and Cold Spots

Perfect for **Retrofit Applications**, the Hi-Velocity Small Diameter Duct System fits in confined areas with **no major remodelling!**

Our attractive Metal, Wood and Plastic Vent Plates blend in with their surroundings, and can be painted or stained to match with any color scheme.



Visit www.hi-velocity.com or call **1-888-652-2219** to find a distributor near you!

Proudly Manufactured by Energy Saving Products Ltd. - Family Owned and Operated since 1983

Celebrating **30 YEARS** *in Business*

Step 2

From the ceiling dimensions, Roth first laid out how the seams of the board panels would relate to the urethane beams, making sure that any seams would be covered by the overlay of the beams.

Step 3

The panels were cut with a circular saw to fit the ceiling areas, then applied with PL Premium Construction adhesive on the back side of the panel and attached with non-corrosive screws to the existing ceiling.

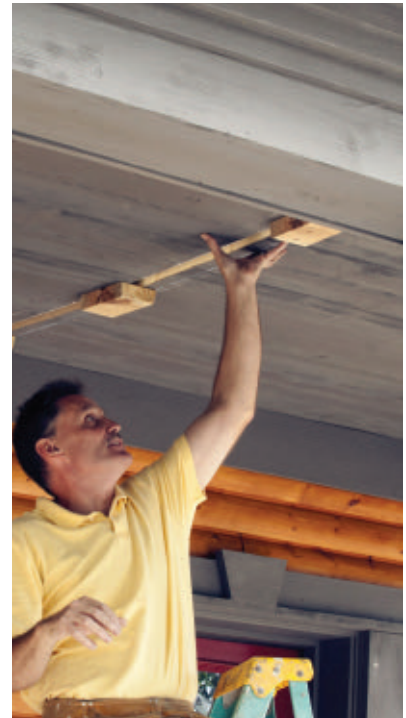
Step 4

Once the panels covered the existing ceiling (which took approximately four hours), Roth laid out the dimensions of the beam



Chalk lines guide the layout to ensure square installation along the porch roof.

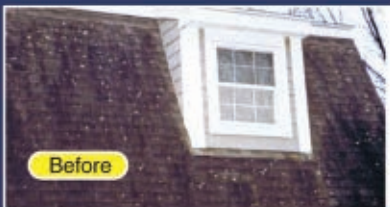
locations so that they would cover the ceiling panel seams. He chalked the layout lines for the beam locations and then cut and installed 2x4 blocking to the ceiling.



Steve Roth installs nailing blocks that slip inside the hollow beams.



CLEAN YOUR STAINED ROOF OR DECK EASILY WITH STAINHANDLER



Stainhandler Roof & Deck Cleaner will clean asphalt shingles, shake roofs, wood decks, and fencing every time! Easy, quick spray-on hose off application removes dirt, pollen, mildew and algae stains. Stainhandler Roof & Deck Cleaner makes stained and discolored roofs and decks look like new. **Order Today!**



Stainhandler
Roof & Deck Cleaner

Cleans approx 2000 sq.ft./gallon. Does not contain chlorine bleach. If you want to keep your roof clean for as long as you have it, use **Stainhandler Roof Protector Zinc Strips**. See how easy and inexpensive it will be at www.stainhandler.com

For FREE information call, fax or mail
Stainhandler-E, 2710 North Ave, Bpt. CT, 06604
Ph: 800-942-3004, Fax: 800-606-2028

Name _____
Address _____
City _____ State _____ Zip _____
Email: _____

www.stainhandler.com Use code **EHS10**
at checkout for 10% SAVINGS.

Got an idea?

100kGarages connects you with people who can turn your thoughts into things.

Anne & Gary



Jeff



Anne Filson and Gary Rohrbacher have created designs for beautiful, functional furniture (called AtFAB) that customers can fab themselves or have made for them using a ShopBot or other CNC tool. To prototype and make the pieces ready-to-fab, they connected with Jeff Shapiro through 100kGarages, and have been collaborating for the past two years. Says Anne, "We've become friends as fellow makers. That's been central to our success."

Get it made.

Got a CAD design file, or just a napkin drawing? We have free resources to help you get your dream project made.

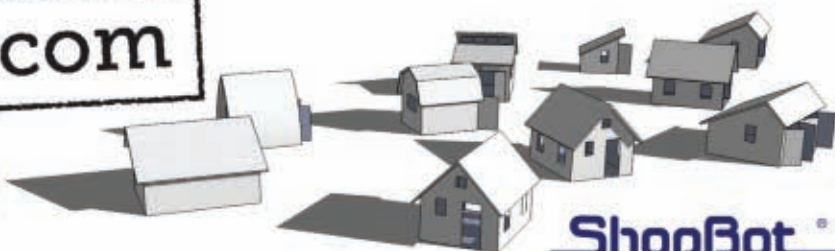
Want some help from a designer? Post your project on **100kGarages.com** for designers to bid on.

Is your idea designed and ready for fabbing? Post it now and get fabbers to bid on making it!

Making connections on 100kGarages.com is FREE. Search and find 100's of people working with 2-D or 3-D digital fabrication tools to cut, machine, drill, sculpt... or print in 3-D. It's easy to find someone near you.

100kGarages.com

connect. collaborate. create.



100kGarages is a project of ShopBot Tools

ShopBot

888-680-4466 • ShopBotTools.com

MATERIAL MARKET

Step 5

With the blocking in place, Roth measured and cut the beams to length with a handsaw. He positioned each beam in place with its hollow core on top of the blocking and then fastened the beams securely with screws to the wood blocking.

Step 6

The beam straps were attached at both ends of the beams creating a tight fit to the porch ceiling area. Polyurethane adhesive was used to secure the straps on the beams, and then non-corrosive screws were added. The addition of the beams and straps took approximately two hours.



The beams fit over the blocking and fasten in place with a combination of screws and polyurethane construction adhesive.

Supergrit® SANDPAPER		MIRKA & INDASA products at best prices!	
PREMIUM QUALITY • DISCOUNT PRICES • CLOSEOUTS			
WOODWORKING		AUTO BODY & MARINE	
METAL WORKING			
BELTS: BEST QUALITY RESIN/RESIN, A.O., "X" CLOTH			
Size	Price/ea	Size	Price/ea
1 x 30	\$.85	3 x 24	\$.90
1 x 42	.90	4 x 21 or 21 1/4	1.40
2 1/2 x 14	1.00	4 x 24	1.50
3 x 18	.90	4 x 36	1.90
3 x 21	1.00	6 x 48	3.80
3 x 23 1/4	.90		
		price quoted 100 grit 10/box	
		Spindle Sander Sleeves	
		all other sizes	
A/O CABINET-BROWN OR GARNET-ORANGE		2" KIT \$18	
Grit Size	Sheets per Pack	Price/Pack	
40D	50PK	\$20.00	
60D	50PK	\$17.00	
80D	50PK	\$16.00	
100C	100PK	\$27.00	
120C, 150C	100PK	\$26.00	
180A, 220A, 320	100PK	\$23.00	
A.O. Sampler 10 Grits 40-320A	100PK	\$24.00	
DRUM SANDER CLOTH ROLLS		3" KIT \$20	
1", 2", 3", 4", 4 1/2", 6", WIDE JWT and XWT			
BLACK WATERPROOF S.C.	9" x 11" Sheet	Grits 150-2500	\$30/100
WHITE NO LOAD S.C.	9" x 11" Sheets	Grits 220-600	\$24/100
WEILER (USA) Wire Cups & Wheels		Dust Collection Hose, Fittings, Adapters	
Nitrile Gloves	9" H & L DISCS Fits PORTER CABLE 7800 DRYWALL SANDER		
\$17.50/100	Foam pad + 5 discs per set		
	Grits 80, 120, 150, 180, 220		\$12.50/set
Gator (USA) Sanding Sponges		3" x 5" x 1" Assorted Grits	
			\$9/10
ABRANET DISCS - 3" \$27/50, 5" \$30/50, 6" \$36/50,		FREE 48 Page Color Catalog	
Red HILL CORP., P.O. Box 4234, Gettysburg, PA 17325			
TEL (800) 822-4003 • FAX (717) 337-0732 • www.supergrit.com			

Aerosol Spraying Made Easier!

INTRODUCING
CAN GUN 1
Spray Can Tool

NRHA
PACKAGING AND MERCHANDISING AWARDS
Silver Award Winner

Easy To Use With Gloves
Highest Grip Comfort
Ergonomic Design & Antistatic Friendly
Easy On & Off
Reusable

MADE IN USA
CAN GUN 1

EXCLUSIVE FEATURES:

- ▶ E-Z Pull FullGrip™ Trigger
- ▶ Up To 8X Easier To Spray*
- ▶ Easy To Use With Gloves
- ▶ Fits ALL Spray Cans! ▶ Reusable
- ▶ Made In USA ▶ Recycled Plastic
- ▶ Suggested List \$3.99 ea.

Avail. At: Ace Hardware • SKU# 1390657
Lee Valley Tools • P.N.# 27K0690
Tractor Supply • SKU# 1038713

Call Now
800.743.0115

up to **8X EASIER TO SPRAY**
*than other products in this category.

BUY WITH TOTAL CONFIDENCE

©2010 SafeWorld™ Int'l, Inc. info@cangun1.com cangun1.com



The beam straps were installed as a finishing touch.



WOOD STOVES | PELLET STOVES | CORN STOVES | FIREPLACES



Find us, friend us,
and follow us...



"As a busy mom, I know we made the right choice in a Magnum Countryside. My kids are warm, it's a snap to operate, and our heating bill isn't a worry any longer."

-Beth Gasser

To read more about our story visit us at blog.magnumheat.com

toll free: **800-495-3196** | locally: **320-587-6565**

Step 7

Roth went back to all areas and added lightweight exterior spackling in the screw and nail-head areas and then applied touch-up paint afterwards. For the entire project he used latex flat sheen paint to complement the natural wood siding color of the home exterior. **EHT**



TIPS FROM THE PRO

According to Roth, this easy one-person project simply requires a drywall lift to position and hold the ceiling panels in position. Without a lift the project could be done with two people placing the panels.

“The challenge for this project was visualizing the use of common products in a unique application,” says Roth. “Using shutters as a ceiling cover was different, but I knew these lightweight products would be ideal for this ceiling and complement the overall look I was trying to achieve.”

Roth offers these tips for contractors and DIY’ers tackling a similar project:

- Pre-finish your materials before application. The Fypon products come factory-primed, and it’s much easier to paint the products for the ceiling application before they’re installed and then to go back and do light touch-up work afterwards.
- Use non-corrosive fasteners so your fastener heads do not rust.
- Be creative and take time with the Fypon catalog. There are so many components to select from that you can create a very custom project by using stock items in unique ways.

Woodworker's Hardware

A must have catalog for every do-it-yourselfer!



Knobs & Pulls



Hinges
Decorative & Concealed



Drawer Slides
Undermount & Side Mount



Request a
FREE catalog!

Kitchen Organizers

Tools & Supplies



Bottom Mount Wood Waste Containers



Heavy Duty Mixer Lift



Compound Mitre Saw Blades



Sanding Discs



Titebond Wood Glue

Also stocking:

- Lazy Susans
- Fasteners
- Locks
- Lighting
- and much more...



Woodworker's Hardware woodworkershardware.com
1-800-383-0130



www.betterwayac.com

INGRAM'S
WATER & AIR EQUIPMENT

Guaranteed Lowest Prices!



HEATING & AIR CONDITIONING:

Air Conditioners, Geothermal Heat Pumps, Split System Heat Pumps and more!

WATER EQUIPMENT:

Water Softeners, Water Coolers, Faucet Mount Filters and more!

AIR PURIFICATION:

Electronic Air Cleaner, Low Micron Media Filter, Humidifiers, Portable Air Units and more!

INGRAM'S OFFERS:

FRIENDLY SERVICE.

We are a friendly, family-owned business that enjoys getting to know our customers. Your concerns have our utmost attention.

LOWEST OUT THE DOOR PRICE.

We guarantee to have the lowest out the door price. This is after shipping cost, special handling fees, insurance, and etc.

FAST SHIPPING.

All HVAC shipments are easily monitored from our door to yours. We strive to save you additional money on freight cost, call us for the lowest available shipping quote.

Save Up To \$500 With
Our Industry Exclusive

PRESSPLAY
REWARDS

Call us **1-866-465-7582**

Visit us **BetterwayAC.com**

TEARING DOWN

*Keeping Building Materials
Out of the Landfill with
Habitat for Humanity*

AND GIVING BACK

By Rob Robillard

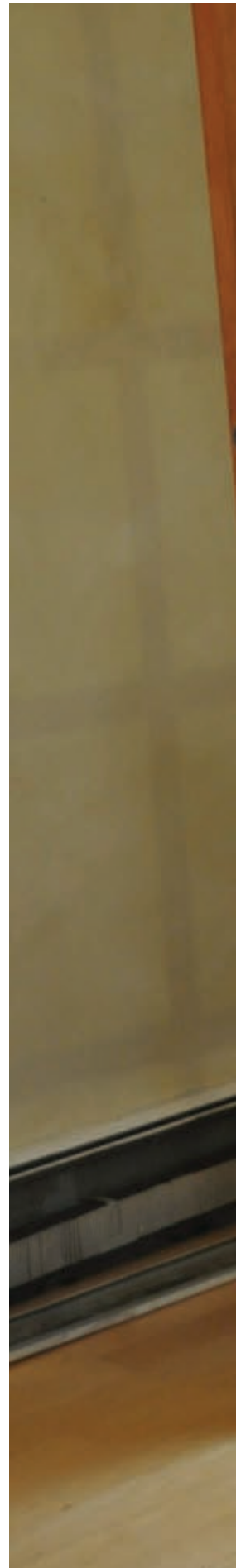
When you're a carpenter you get all sorts of questions and requests for favors: How do I fix this? Can I borrow one of your tools? Is your pickup truck free on Saturday? One recent request really got my attention.

A good friend asked if I would help her remove some of the newer windows and doors from her house, already slated for demolition. She and her husband wanted to donate the items to the Habitat for Humanity ReStore.

STORY BEHIND THE STORY

My friend is tearing down a circa 1960, energy-inefficient house that that was in need of major updating, exterior and interior, including all of the bathrooms and the kitchen.

They plan on saving the existing foundation and building an updated, better constructed home for their family with more energy efficiency.





TEARING DOWN AND GIVING BACK

When my friend and I met to go over the salvage mission she was emotional, explaining that they have 11 years of family memories in the house and could not justify destroying parts of the home that were in great shape and could be used by someone else.

She told me she had first heard of Habitat for Humanity when her husband had worked a few days constructing a house as part of a team-building effort his employer had organized. He shared his excitement with her and had always considered volunteering again for Habitat for Humanity.

While researching a place to donate her building materials, she came across the Habitat for Humanity website and wanted to work with them.

WHAT IS HABITAT FOR HUMANITY?

Habitat for Humanity is a charitable nonprofit organization dedicated to building simple low-cost homes by forming partnerships with low-income families in need of decent and affordable housing.

Through volunteer labor and tax-deductible donations of money, land and materials, Habitat for Humanity builds or rehabilitates nice, simple houses.

Families are selected based on their level of need, willingness to work, acceptance of responsibilities and ability to pay a mortgage. Families must complete at least 300 hours of sweat equity and an additional 100 hours of homeowner education classes. Qualified families purchase Habitat homes with zero-interest mortgages, enabling them to own their home.

WHAT IS A HABITAT FOR HUMANITY RESTORE?

There are approximately 825 Habitat for Humanity ReStores (retail outlets) in the United States

Several doors, windows and sinks were salvaged from this project.



and Canada, and they accept donations of new and gently-used building materials and household goods. All materials are donated by local retail businesses, building contractors, suppliers and individuals. The Habitat ReStore sells new and used items to the public at a fraction of the retail price, typically 50 to 90 percent off.

The proceeds benefit Habitat's mission to build affordable homes and help low-income families acquire them. All donations are

tax deductible, and proceeds go back to the local Habitat for Humanity affiliate to build houses for families in the local community.

Habitat for Humanity and the Habitat ReStore rely heavily on corporate sponsors, donors and volunteers. What I liked most about the Habitat ReStore is that it gets folks who might not usually be interested in volunteering on a construction site to become involved in the process.

I AM A DECK BUILDER. I AM

WOLMANIZED®
OUTDOOR® WOOD

"I prefer the natural beauty of wood decking, but it's more than appearance. Wood encourages people to enjoy their decks more so than artificial materials. People have an inherent connection with wood. I build decks that are used, not just admired through a window."

"I use Wolmanized® Outdoor® wood. I don't worry about termites or decay; my clients and I can rely on the protection of Wolmanized® wood."

John Paulin
Tailor Decks
Statham, GA

Winner of multiple awards for his decks, including 2011 Deck of the Year from the North American Deck and Railing Association



GooHousekeepingSeal.com
GreenApprovedProducts.com

TEARING AND GIVING DOWN BACK

The Habitat ReStore is also a "green" process in that it's an environmentally and socially responsible way to keep good, reusable building materials out of landfills.

The Habitat ReStore is operated by a local Habitat for Humanity affiliate and each one is unique. Most Habitat ReStores focus on home-improvement goods like

furniture, home accessories, building materials and appliances.

VOLUNTEERING

After hearing my friend's emotional plea and the story of the Habitat ReStore, it clearly sounded like a win-win situation to me.

A home's shelter is a basic need for all people and I was sold on the idea. I spoke immediately to my carpentry crew to see if they'd help me salvage items from the house prior to demolition day. They agreed that this was a worthy use of time and we scheduled the salvage detail for that Saturday.

SALVAGE DAY

The homeowner received pre-approval for the items to be donated and then marked all of the items with blue tape to make identification easier for me and my crew.

We arrived at 7:00 a.m. and had to have everything removed

SWEEP- AWAY

CABINET VAC
BY GALAXIE

No more bending over with a conventional dust pan, simply sweep dirt and debris away!!



Available for either right (shown above) or left mounting applications.

The **Sweep-Away** Cabinet Vac is a fully self contained vacuum cleaner that functions as an Automatic Dustpan and a Central Vacuum

The **Sweep-Away** mounts easily into most kitchen or bathroom cabinets and is mounted under a space saving powder coated metal shelf. Simply screw the metal shelf to the floor and wall of the cabinet and plug it in.

The Automatic Dustpan mounts into the kickboard of the cabinet and is connected to the **Sweep-Away** with flex hose. The Automatic Dustpan mounts flush to the kickboard, never in the way and is virtually unnoticeable.



GALAXIE

also offers
Do-it-Yourself central vacuum kits for those who are looking for a complete central vacuum system



Easy-to-Order, Easy-to-Handle, Easy-to-Install Packages!

Our installation kits are designed and packaged to fit your Home or Business and specific application needs.

Contractors as well as do-it-yourselfers can take advantage of our experience with one of our "Complete Kits". Contact your dealer for complete information.

Basic Package Contains:

- Power Unit matched to your unique system requirements
- 30' Crushproof Hose with Hanger
- 5 piece cleaning Tool Kit + Mesh Tool Storage Bag
- Sufficient Valves, Tubing, Fittings and Hardware for any Selected Number of outlets. (We can help you select how many outlets you'll need)
- Detailed Installation Manual



Another Innovative Product From ...

GALAXIE

www.galaxie-vac.com



The first step to remove the windows was to pry away the interior trim.



The sill plates were pried away.

by 10:00 am when the Restore truck was scheduled to arrive.

In order to run our reciprocating saws we had to run 200 feet of 12-gauge extension cords. The house power was disconnected and the jobsite's temporary power was not yet live.



The siding was pulled off to reveal the window's nailing flange.



Extract each of the nails from the flange to free the window.

Careful use of a cat's paw or nail puller was the key to removing the "roofers."



REMOVING THE WINDOWS

While we've installed plenty of new windows, we don't usually remove them so this was an exercise in reverse for us. First we removed all of the interior trim

and window sills before taking off the exterior clapboard siding immediately surrounding the window.

Once the siding was removed we were able to expose the window nailing flange, which was

Build For Life



The same **ArmorCore**[®] ballistic resistant panels that protect security-risk locations, including money rooms, courtrooms, cashier areas, and military personnel carriers can be effectively used to create a Safe Room or Storm Shelter in a home or office.

Easily concealed within walls and fixed furnishings, **ArmorCore**[®] fiberglass panels provide unrivalled "**Forced Entry Protection**," and have been certified to withstand large missile impacts common from debris in both hurricanes and tornados.

Visit our website and discover that the benefits include:

- Full range of protection levels available
- Easily installed with basic tools
- Available cut to size
- Factory-Direct pricing

Call us for more information about how **ArmorCore**[®] can help you protect your family and property.



Contact: Waco Composites, Ltd.
Toll Free: 888-688-3088
Phone: 254-752-3622

www.ArmorCore.com

TEARING AND GIVING DOWN BACK

fastened approximately every 4 to 6 inches with roofing nails.

Careful use of a cat's paw or nail puller was the key to removing the "roofers."

After that it was simply a matter of tilting the window out of its opening and carrying it to the garage, our designated transfer location.



The windows were in good condition to be donated to a Habitat for Humanity ReStore.



Some of the upper-level windows required careful staging for removal.

SHELVES THAT SLIDE

- Custom Made for Your Cabinets
- Kitchens • Pantry • Bathrooms
- Limited Lifetime Warranty
- Baltic Birch Construction
- 100 Pound Capacity

1-800-598-7390
www.shelvesthatsslide.com

Order On-Line

**Custom pull out shelves
and Kitchen cabinet accessories**



Call or email for a free catalog

REMOVING EXTERIOR DOORS

Three newer exterior doors in this home were designated for salvage. Two were quality wood-frame doors and the third was an Anderson sliding door unit.

Upon closer inspection one of the exterior doors, a Simpson brand 15-lite door, had damage to its oak threshold so we made a decision to remove and salvage the door slab and hardware and leave the door jamb behind.

This Simpson door had a nice brass Baldwin knob and hinges set, so we removed the hinges from the door jamb but left them attached to the door for safe keeping. We took the hinge screws and strike plates, placed them into a plastic baggie and taped them to the door.



These French doors were in excellent shape for salvage.

The front exterior door was protected by a porch roof and was in fantastic shape, so we removed the door and jamb, keeping them together as a unit.

To remove this door and jamb we first removed the door from the frame. To do this we used a nail set and hammer to tap the bottom of the hinge pins up, which allows for easy removal.

All three hinge pins were removed and then the door was removed and set aside. We used trim pry bars to remove the interior and exterior trim to expose the door jamb shims. Once exposed we used a reciprocating saw to cut the nails and then tilt out the door jamb from the framing.

REMOVING INTERIOR DOORS

Removing the interior doors was similar to the exterior doors, but easier to remove because they were installed with only a few finish nails.

The first step was to remove the door from the hinges, then all of the trim, both sides. Some carpenters do not use shims or install finish nails through the



Always remove the lower hinge pins first and work your way to the top.



For some exterior doors, only the slab could be salvaged. However, with the interiors we saved the doors and the jambs.

STOP DREAMING AND START LIVING

Does your living space stop on the ground floor because your basement is damp and uninviting? Reclaim that 1/3 of your home with **DRYLOK®** Masonry Waterproofer. Your basement can be a playroom, laundry room, workshop and more in one weekend.

STOPS WATER

3 PROVEN FORMULAS

INDEPENDENTLY TESTED

DRYLOK
BRINGS LIVING TO
THE NEXT LEVEL

Visit DRYLOK.COM for inspirational photos, how-to videos and brochures

TEARING AND GIVING DOWN BACK

door jamb, and you'll find out if they did at this stage. If the door has shims, it most likely has nails that need to be cut with a reciprocating saw.

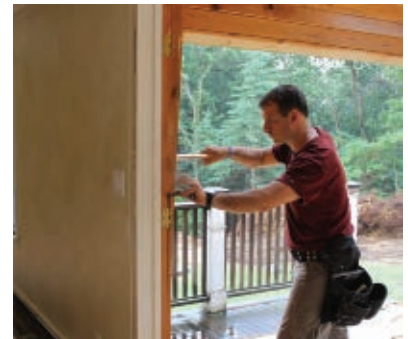
PREPPING THE DOORS FOR TRANSPORT

With the doors and door jambs removed from the framing we prepared them for transport. The

doors were placed back into the jambs and the hinge pins were reinstalled.

A helper then held the doors in the frames to prevent sagging, and we installed one finish nail through the jamb and into the door, leaving the head of the nail exposed for easy removal.

Securing a door this way allows the door and its jamb to be transported and stored as one unit and also prevents the delicate three-piece jamb from sustaining twisting damage.



Remove the door trim to access the jambs.



Cut the jamb fasteners with a recip saw.



Be careful with the jambs to avoid damage from racking or twisting.

"Ergonomics at work when you sit or stand."

ErgoTradingdotNet

(800) 870-3746



Home Office?
Protect your Floors!

Now Two 'Greener' Alternatives:
Both available in styles for either carpets or hard-surface floors!

1.

ecoKLEER® Chair Mats
Made with Tritan™ CoPolyester



5-Year Limited Warranty
46" x 60" Rectangle
Straight Cut Edges



\$149.95
includes shipping*

\$169.95
includes shipping*



2.

Natural Origins™ ChairMATs and DESKpads
The First Chair MAT Made from Renewable Plant Sources

Made in the U.S. A.

*Ground Shipping to 48 contiguous United States only.
Mats are shipped rolled in boxes.

HOBART[®]

WELDING PRODUCTS

Trusted Performance Since 1917



Don't take your metal projects to a weld shop...feel the satisfaction of making sparks and melting metal at home. Check out our full-line of welding and cutting equipment at HobartWelders.com today. Because your garage was built for fixing stuff.

800-332-3281

www.hobartwelders.com

Get Connected



TEARING AND DOWN GIVING BACK

REMOVING THE SLIDER

Removing the sliding door for reuse was like installing it in reverse. First the top retaining strip was removed so the moving

doors could be lifted off the tracks and removed.

After the moving doors were removed the next step was to unscrew the fixed panel's top "L"

bracket and the four to five screws in the bottom of the threshold. Once all of the fasteners were removed the fixed panel slid toward the center and then tilted and lifted out.

Jamb screws were removed next, usually three to four on the side jambs and then three to four along the top jamb.

To remove the slider's jamb we needed to expose the nailing flanges by removing the exterior clapboard siding / trim and any roofing nails in the slider flange.

The last step was to tilt the slider jamb and attached threshold out of the framing. We attached two diagonal braces to the opposite top and lower corners to keep the jamb from bending and damage.

REMOVING THE MANTEL

Most fireplace mantels that I have installed or removed were fastened with finish nails. This mantel was no different. Using two pry bars I worked my way down the mantel shelf and legs, prying the finish nails loose.

GET EXTREME With Weeds This Summer



Put the heat on them with the "All American" Torch Line!

Red Dragon
PROPANE TORCH KIT
500,000 BTU
The perfect choice for farm, ranch, construction & big jobs. Our Most Powerful Vapor Torch!

Weed Dragon
PROPANE TORCH KIT
100,000 BTU
North America's #1 home & garden torch kit. Fully assembled and perfect for most jobs.

Mini Dragon
PROPANE TORCH KIT
25,000 BTU
The perfect torch kit for spot weeding and smaller jobs. Uses standard 1lb. cylinders.

50 Years
1939-2011

MADE IN THE USA

DESIGN CERTIFIED

CERTIFIED

Find out more about Flame Weeding Today!
www.RedDragonTorch.com • 1-800-255-2469

POWER TOOLS OVERHEATING

Because we were using a super-long extension cord, we paid close attention to the tools' temperature and any burning odor. Overheating means that your motor is working too hard and a drop in current can result in motor damage.

When a tool does not receive enough voltage to the motor, the motor may overheat. Overheating can lead to irreversible damage to the motor. Long extension cords gradually lose their ability to supply voltage. This loss can lead to overheating in tools so you need to use a shorter connection to the power supply if possible.

If you must use a long extension cord, use the thickest, lowest gauge extension cord you can find. We used 12-gauge cords and had no problems.

Once a space large enough for my hand was created I simply pulled the mantel off the wall.

We used end cutters to pull the finish nails out of the mantel from the rear to avoid damaging the mantel face.

REMOVING SINKS

The water in the house was turned off. We removed four Kohler sinks with attached faucets.

The drain at the P trap and the water lines were disconnected and then we focused on the caulking at the countertop.

We found that the best way to loosen this caulking was with a multi-tool and a scraper blade. The multi-tool easily cut the old caulking, allowing us to easily lift the sinks out of the counter hole. **EHT**

Editor's Note: Robert Robillard is a remodeling contractor based in Concord, MA. He is also the editor of a www.AConcordCarpenter.com Visit his website to learn practical solutions to your home improvement problems

GREAT STUFF, GREAT PRICE, GREAT CAUSE

Working to salvage items from this house was a very positive experience for all of us. And time well spent. Volunteering makes a meaningful, positive impact on my community and the well-being of individual families. What better way is there to connect with your community and give something back?

This is a great way to make that little corner of the world where you live just a little bit better. Whether you're looking for a convenient place to donate, a rewarding place to volunteer, or a great deal on that one-of-a-kind item, check out your local Habitat for Humanity ReStore or visit online at www.habitat.org.



The mantel was fastened with finish nails and was pried away from the wall in a single piece.

Keeps Paint Out. Keeps Lines Sharp.®

FROGTAPE® Pro Painter's Tape

FrogTape® is the only painter's tape treated with PaintBlock® Technology. PaintBlock® forms a micro-barrier that seals the edges of the tape, preventing paint bleed. Visit FrogTape.com to see PaintBlock in action, get painting tips and more!

[f](#) [t](#) [y](#) [p](#)

FrogTape.com
877-FROGTAPE
(376-4827)

PATENTED
FROGTAPE
Keeps Paint Out. Keeps Lines Sharp.

©ShurTech Brands, LLC 2015/522817

A photograph of a wooden deck with a wicker chair and a glass railing. The deck is made of light-colored wood planks. The chair has a dark metal frame and brown cushions. The railing is made of clear glass panels held in a dark metal frame. The background shows a wooden wall and a door.

UPDATE FOR DECK BUILDERS

By Matt Weber

Deck construction is an evolving art. Every year new materials are introduced, technology advances, tools are innovated, and building codes get updated. In this issue, *EHT* offers an update for the deck builder, to keep both professionals and DIY'ers abreast of what's now required, what's now available, and how to get the project completed successfully.

NEW 2012 CODE CHANGES FOR DECK CONSTRUCTION

If you're planning to build a deck near a pool or spa, then you should be aware of some new building code changes from the International Code Council. The 2012 International Swimming Pool and Spa Code stipulates new rules for deck surfaces adjacent to "adequate vessels", which the code defines as any vessel that holds more than 12 inches of water and is used for recreation. According to section 306 of the new code, decks around water must be designed to reduce the hazard of slip-and-fall accidents due to standing water on the walking surface. Here's a quick look at the details.



UPDATE FOR DECK BUILDERS

Slip resistance. According to section 306 of the code, the walking surface of decks built adjacent to water vessels must be slip-resistant. Unfortunately, the code fails to provide a test standard, which makes this a confusing requirement for the installer. The deck surface must be “treated or constructed to significantly reduce slipping,” which sounds as if unaltered wood would no longer be accepted. Some manufactured texturing product may be required, such as a coating or as an integral feature of the decking material.

Deck slope. Section 306.4 requires a deck pitch that drains water. The code states that standing water on the deck cannot exceed 1/8 inch in depth 20

minutes after rain ceases to fall. To meet the standard, the code now requires that deck surfaces around pools and spas be sloped at least 1/8 inch—but no more than 1/4 inch—for every 1 foot.

Gaps between deck boards. In section 306.5 you’ll find new spacing requirements for decks installed around pools and spas. “Gaps shall be provided between deck boards in wood decks.” This requirement allows drainage between the boards and may eliminate the use of tongue-and-groove decking products for such applications. Tripping hazards must also be avoided: “The difference in vertical elevation between the pool deck and the adjoining sidewalk shall be not greater than 1/4 inch.”

Blunt edges. On top of these new slip-prevention measures, the ICC also requires constructing the edges of the structure so they’re as safe as possible if someone were still to lose their footing on the deck. Section 306.7 requires: “The edges of all decks shall be radiused, tapered, or otherwise designed to eliminate sharp corners.”

These are brand-new code changes, and most local authorities have not yet adopted the new requirements. However, the ICC is a model for most building ordinances, so expect your local inspector to eventually follow suit. In the meantime, always consult with local authorities to determine what is currently required in your area.



If you're planning to build a deck near a pool or spa, then you should be aware of some new building code changes. Photo courtesy Wolmanized Outdoor Wood. Visit www.wolmanizedwood.com.

Maine Deck Bracket

A Revolutionary method of attaching Decks, Stairs, Signs and other appendages to buildings!

Maine Deck Brackets are **Rugged Aluminum Extrusions**, specifically designed for proper attachment of stairs, Decks, signs, porches, or any other appendage to buildings.

Maine Deck Brackets allow attachments without creating openings or pockets for water, debris, or insects to enter.

Our system design is so unique it holds two U.S. Patents!

- Patented profile provides high strength, ease of installation, and excellent load distribution.
- Helps prevent moisture from ever getting into buildings at attachment points.
- Customer satisfaction is increased due to superior rigidity and longevity.
- Super strong and lightweight custom designed monolythic extrusion.
- All T6 Aluminum construction **WILL NOT RUST.**
- Easy installation reduces labor costs.
- Allows free air circulation.
- Frustrates insects.

***Proudly made by
Maine craftsmen!***

***Your Source for 100%
American-Made Brackets!***

207-212-0888



www.deckbracket.com

UPDATE FOR DECK BUILDERS

NEW DECKING PRODUCTS

NYLODECK

NyloBoard is a manufacturer of building products that uses recycled carpet fiber to create exceptionally strong, durable and eco-friendly composite building materials that contain no wood or PVCs. All NyloBoard products are impervious to moisture, rotting, termites, mold and mildew and possess excellent strength, durability and performance qualities. NyloDeck is the company's new decking and dock material for contractors, remodelers and builders. The deck boards are strong, lightweight, UV-protected and impervious to water, mold and termites. Plus, a proprietary embossing process creates natural looking, unique woodgrain patterns on every board. According to the manufacturer, the material offers the best expansion and contraction rating of all composites, and the boards' strength and rigidity enable joist spans up to 24" O.C. Visit www.nyloboard.com.



DECK2WALL™
spacer

US Patent Nos. 6,945,004 & 8,087,207

The Ultimate
LEDGER CONNECTION PROTECTION™

Fast & Easy to Use
Perfect Alignment Every Time
Rugged, Durable and Non-Corrosive

DECKS UNLIMITED
TOLL FREE 888 511-2231
WWW.DECK2WALLSPACER.COM

DON'T LET YOUR DECK ROT YOUR HOUSE



The full line of ipé decking, Ultra-Tec Cable™ systems, Deckorators™ products and Aurora Deck Lighting are all available directly at Bristol Valley Hardwoods. (or ask your architect or contractor to contact us)

Bristol Valley Hardwoods

800-724-0132

Visit our website at www.bristolvalley.com

For a free sample package of our ipé woods mention code 5695.*
*shipping additional



ORNAMENTAL WOOD TIES

Ornamental Wood Ties are essentially decorative structural wood connectors for decks, pergolas, sun shades, pavilions and more. Ornamental Wood Ties hardware produces strong connections and enhances your project design. With a wide range of connectors and components, you can use your imagination to build a project that is uniquely your own. All the hardware products are made of heavy gauge steel that is hot-dipped galvanized after fabrication. The parts are then finished with an exterior-grade powder coating for the ultimate protection in harsh environments and suitable for contact with ACQ-treated lumber. The decorative wood ties have been engineered to make installation faster and easier with industry-leading features and attachment techniques. Visit www.OZCOBuildingProducts.com.



Cepco Tool COMPANY

800-466-9626 www.cepco.com

SIMPLY PLACE THE BOWRENCH® DECKING TOOL ONTO A JOIST, SWING THE HANDLE, AND LET GO.

The BoWrench® straightens boards to make decks, docks, floors, ceilings, walls, and tongue-and-groove installation easy and fast.

FREE YOUR HANDS!



BoWrench®

UPDATE FOR DECK BUILDERS

MAINE DECK BRACKET

The Maine Deck Bracket is a long-lasting and reliable method of attaching decks, stairs, signs and other appendages to buildings. Maine Deck Brackets are rugged aluminum extrusions that allow structural attachments without creating openings or pockets for water or debris to collect, or insects to infest. The unique bracket system is protected by two patents to provide high strength, easy installation and excellent load distribution. Plus, it helps prevent moisture from penetrating buildings at the attachment points, which is a common weak spot for decks with standard ledger systems. Made in the USA with custom-designed monolithic extrusion, the bracket's T6 aluminum construction will maintain rigidity and will not rust. Visit www.deckbracket.com.



Attach-A-Deck

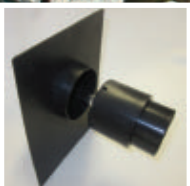
A Ledger Attachment Device (for wood, vinyl, or existing stucco)



**Eliminates
Moisture
Problems!**

Attach-A-Deck provides an air space that eliminates moisture buildup that is commonplace between the ledger and the home in all climates.

- Prevents ledger rot and mold
- Extends the life of the deck's ledger
- No need to remove siding
- Eliminates Flashing
- No hazardous waste mitigations
- Use on all types of siding or existing stucco
- IAS accredited Lab Testing



The Stucco Boot (for new construction stucco)

Used in combination with the Attach-A-Deck provides all the features of the Attach-A-Deck **PLUS:**

- 100% water proof connection between the ledger and the home
- Maintains a continuous application of the waterproof membrane beneath the stucco
- No unnecessary flashing OR seams



www.attachadeck.com

Why is Transformation Deck & Fence the Better Stain?



It's the Best of Both Worlds:

Acrylic Deck Stains



Oil Deck Stains



Transformation Stain



Transformation
Deck & Fence **Stain.**



Get the free mobile app
at <http://gettag.mobi>

Keep up with Sashcoinc on:



sashco
Products That Work

www.sashco.com • 1-800-767-5656

Before You Paint or Stain, Waterproof Exterior Wood from Our 100% Non Toxic Wood Treatment

Seal It Green organic wood treatment products are safe and non-toxic to people, pets and the planet. They are the best home owners treated wood alternatives that are 100% non-toxic. All of our non-toxic wood treatments are perfect for decks, fences, docks, siding applications, lam beams, and log homes. Contractors and home owners love them.



Hmm...
protecting wood,
let's make it
simple

IMAGINE

Being able to quickly and easily stain and seal your wood or bamboo in a wide range of colors and finishes. A coating *guaranteed not to peel, flake or hide the natural grain and beauty of the wood...* Never power wash again.

Check us out at sealitgreen.com (800) 555-5555

Our **Seal it Green XTREME** products are unique in that our products can protect your wood from mold and fungus growth all while preventing insects including termites. **XTREME** will keep your wood stable by migrating to the core of the wood to prevent warping.

XTREME's ability to migrate down to the core of the wood can last up to 50 years or more. If you want your deck to last 50 or more years, choose **XTREME**.

the Inside Out with

anet. Our natural pesticides offer
tment products work for decks,
e how easy it goes on.

maintain all exterior
s - even clear, with a
de the natural grain
sh again!

(800) 914-1440

oils offer Wood what most other wood protection products
ose from. They provide a broad spectrum fungicide stopping
uding termites, carpenter ants and wood borers. Seal it Green
ore ensuring less checking, cracking, splitting, cupping and



Seal It Green

sealants

Wood protection to the core

XTREME



makes us not only a stand-alone product, but ideal for pre-coating at the
ars, along with easy maintenance, make sure you tell your mill to pre-coat

UPDATE FOR DECK BUILDERS



TRANSFORMATION DECK & FENCE

Newly launched in 2012, Transformation Stain Deck & Fence combines the benefits of both oil and acrylic deck stain technologies into one stain. Acrylic deck stains provide great wood surface protection but do not penetrate the wood surface. Eventually, acrylic stains will peel from the surface in patches, making re-staining difficult. Oil deck stains penetrate well into the wood but do not always leave adequate protection at the wood surface. Transformation Deck & Fence penetrates into the wood for great adhesion but also leaves protection at the surface to battle the sun, moisture and foot traffic. The stain erodes instead of peels and wears evenly across your deck for easy maintenance. Combine that with water clean-up and it is among the easiest stains to maintain. Visit www.sashco.com

Deck Building SOLUTIONS

The answers for a long lasting, more beautiful deck.

Hidden Deck Fasteners

The Hidden Link
HIDDEN DECK FASTENING SYSTEM

SHADOE TRACK
The Ultimate Deck Fastening System

Mantis
DECK CLIP SYSTEM



Composite Deck Screws

You want
this...



No More Mushrooms!

NOT
this...



Contact us to see how
we can help you
increase your profits

Ty-Lan Enterprises Inc.
1570 North Routledge Park
London, ON N6H 5L6
1-800-742-3632
www.bestdeckfasteners.com

Sure Drive U.S.A.
634 Reese Drive
Conover, North Carolina
1-866-767-1850
1-828-468-1088
Fax 1-822-469-1080
www.suredrive.com

SKYLIFT ROOF RISER HARDWARE

The SkyLift Roof Riser Hardware is an innovative and elegant solution to the problems caused by low-pitch flat patio covers. The hardware is designed to elevate a patio roof above an existing structure's roof. Engineered to hold the weight of standard beam construction, the brackets are cut through the existing roof, bolted to a structure's exterior weight-bearing walls, and sealed with a standard pipe jack waterproof flashing to form the roof support system. The elevated roof increases pitch that helps water flow and discourages debris accumulation, solving most of the leakage and rot problems of low-pitch or flat covers. The higher roof also provides the patio with an airier feel and opens up the view. The brackets create a gap between the two roofs, allowing



natural light to spill in and releasing trapped heat. Weather protection is not compromised because the roofs overlap. Visit www.skylifhardware.com.

TIMBERTECH EVOLUTIONS RAIL

TimberTech's Evolutions Rail for decks and patios features a sleek, flat, continuous top rail, uninterrupted by posts and a flat surface suitable for holding drinks or small plates. The railing system accommodates the choice of three infill options: metal balusters, composite balusters or stainless steel cable. Evolutions Rail is made from precision-engineered composite with a durable polymer cap that gives it the structural feeling of wood, but with low-maintenance properties and superior moisture resistance. Evolutions Rail kits are available in standard



6- and 8-ft. sections with 36- or 42-in. rail heights and include top rail, bottom rail and mounting hardware. The rail system is currently available in Brick, Traditional

Walnut and Classic Black color options and is compatible with TimberTech's DeckLites low-voltage lighting system. Visit www.timbertech.com.



Decks • Porches
Cottages • Barns
Additions &
Much More!

Bigfoot Works For You!

Build Stronger. Safer. Better - with Bigfoot!

Bigfoot Systems® pre-molded, ready-to use footing forms have a well-established advantage. Its round shape offers the footing superior structural stability.

Bigfoot supports you, it doesn't fall down on the job, it's there for the long haul.

With Bigfoot in your corner you can install our footing forms in a single day, saving up to 90% of your installation costs!





800-934-0393

www.bigfootsystems.com




UPDATE FOR DECK BUILDERS

DECK WASHER

The new Deck Washer from HomeRight is the first scrubbing broom with water-jet nozzles to pressure-clean while you sweep. This new deck and patio cleaning tool is a scrubbing broom with water nozzles that connects to a garden hose. The Deck Washer loosens and pushes debris simultaneously. A row of 14 powerful water nozzles multiply water pressure for deep cleaning. Combine that with specially-designed scrubbing bristles, and dirt, grime and debris don't stand a chance. Simply screw the three-piece handle and brush head together, attach a standard garden hose and get to cleaning. The Deck Washer includes an on/off valve attachment to standard garden hoses. It is sold with a 54-in. long extension handle. The high-quality bristles are ideal for scrubbing away grass clippings, leaves, dirt, mold and mildew. Visit www.homeright.com.



DeckWise™ SMART SOLUTIONS FOR TOUGH DECKS

1 STRAIGHTEN **2 FASTEN** **3 PROTECT**

Place On Joist

Rotate Handle

Holds Boards In Place

Hidden Deck Fasteners

Deck Tile Connectors

Board Spacers

Hidden Siding Fasteners

Colormatch Screws

Hardwood Plug Kits

Untreated End-Cut

End Treat

Treated with Ipe Seal™

Untreated Ipe Decking

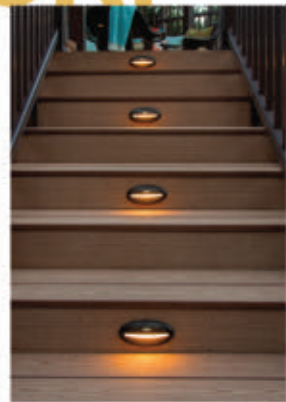
Surface Treat

Treated with Ipe Oil™

www.DeckWise.com

1-866-427-2547

YOUR REPUTATION RIDES ON EVERY DECK.



straight talk
candid questions
straight answers



Have a question about composite decking? Ask us or just follow the conversation at timbertech.com/straighttalk



OURS, TOO.

Compromise Is Not An Option. Your customers expect high-performance decking and low-maintenance living. That's why you depend on TimberTech. Built on more than 60 years of extrusion experience, TimberTech products are made from the highest quality materials, utilize the most innovative technology in the industry and are backed by a 25-year limited residential warranty. When your reputation is on the line, build with the best. Build with TimberTech. See the full product line at timbertech.com

 **TimberTech**
Less Work. More Life.

DECKING | RAILING | LIGHTING | FASTENING | FENCING

UPDATE FOR DECK BUILDERS

DEFY DECKING PRODUCTS

Savers Systems offers an extensive line of deck stain and sealant products, including DEFY Extreme Wood Stain, which is a synthetic-resin, semi-transparent wood stain

formulated using state-of-the-art Nano-Technology for exceptional durability. The company also offers DEFY Composite Deck Cleaner, a safe, oxygen bleach cleaner that's highly effective at removing black



stains caused by algae, dirt, grime and weathered graying from composite wood surfaces. For refinishing projects, Savers Systems also offers DEFY Wood Cleaner, DEFY Wood Stain Stripper and DEFY Wood Brightener.

DECK2WALL SPACERS

Deck2wall Spacers help prevent rot from occurring at deck-ledger connections. The spacers separate the ledger from the supporting structure, providing a path for water and debris to flow harmlessly through the assembly, while promoting circulation and drying. Stacked washers have often been used as spacers but Deck2wall Spacers have many advantages over standard washers. The Deck2Wall Spacers have attachment holes to keep spacers in



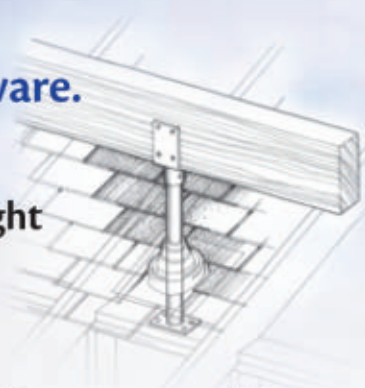
THIS CHANGES Everything!



SkyLift
roof riser hardware™

RAISE THE ROOF *with*
SkyLift roof riser hardware.

- › Avoid low-slope problems
- › Expand view and natural light
- › Increase air circulation
- › Retain weather protection



*The simple solution to
patio cover problems!*



Learn more at:
SkyLiftHardware.com

Made in USA

perfect alignment for a faster and easier installation. They offer more bearing surface for better load distribution, and the plastic spacers are non-corrosive. Plus, the one-piece design and installation method provides superior water-proofing. The Deck2Wall Spacers also provide a long-lasting solution for attaching shade structures, posts, stair stringers, landings, built-up beams or mechanical equipment. Made in the USA, the spacers are injection-molded, fiberglass-reinforced polypropylene, 5/8-in. thick with a 2-1/2-in. diameter and a 11/16-in. bolt hole (use #6-8 corrosion resistant screws in attachment holes). Visit www.deck2wallspacer.com.

EVERFLASHING

Developed and patented by a carpenter with 28 years of experience, EverFlashing is a new type of ledger flashing. When attaching a deck to a house, building code

requires house wrap as well as flashing a deck's ledger board. This is required to stop the rim joist from rotting and the deck pulling away from the structure. Everflashing has a siding flange to minimize water and dirt intrusion between the deck boards and the siding. The siding flange gives a clean, finished look to the decking where it meets the house. This also allows for the ledger board to be installed and the project sided long before the deck is built. Everflashing also has a 1/2-in. drip flange down the face of the ledger board to further ensure water protection. Everflashing comes in two sizes: 1-1/2-in. for standard ledger installations and 2-1/8-in. for deck-to-wall spacers. Available in 8- and 10-ft. lengths, the flashing is available in heavy gauge metals, stainless steel, G-185 galvanized and pre-painted aluminum. Visit www.ledgerflashing.com.



TOUGH Clear, Serious Strength EPOXY

Gorilla Epoxy combines superior strength, speed and clarity to deliver the highest performance bond, whatever the application. It's serious strength when you need it.

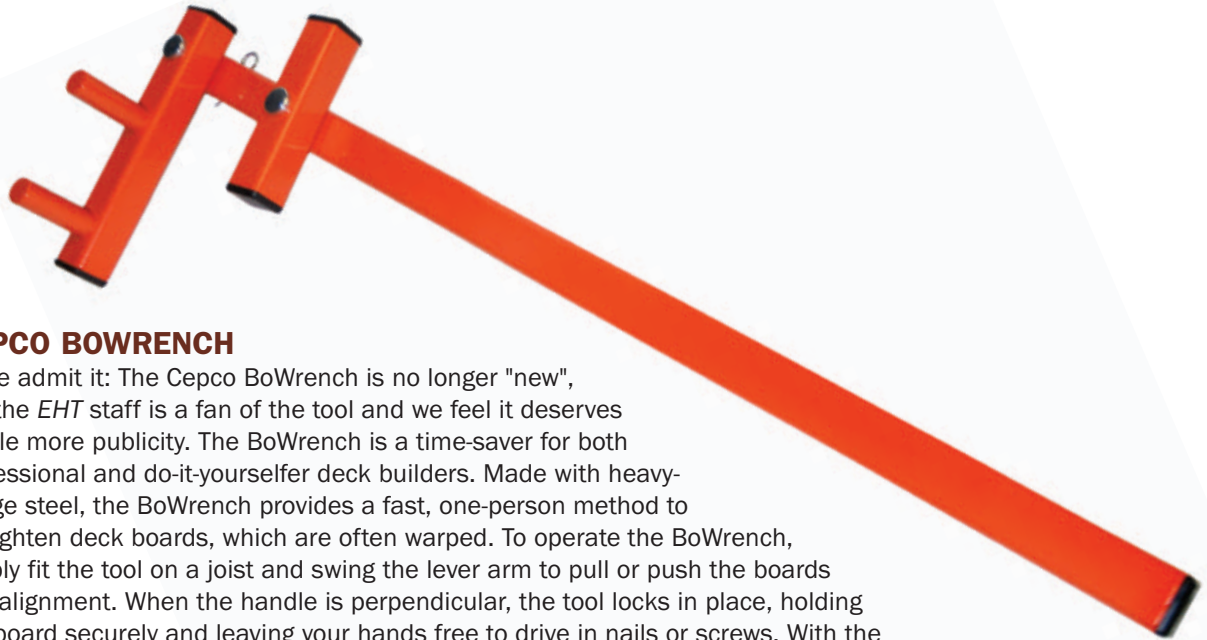


**For the Toughest Jobs
on Planet Earth®**

www.gorillatough.com

©2013 The Gorilla Glue Company

UPDATE FOR DECK BUILDERS



CEPCO BOWRENCH

We admit it: The Cepco BoWrench is no longer "new", but the *EHT* staff is a fan of the tool and we feel it deserves a little more publicity. The BoWrench is a time-saver for both professional and do-it-yourselfer deck builders. Made with heavy-gauge steel, the BoWrench provides a fast, one-person method to straighten deck boards, which are often warped. To operate the BoWrench, simply fit the tool on a joist and swing the lever arm to pull or push the boards into alignment. When the handle is perpendicular, the tool locks in place, holding the board securely and leaving your hands free to drive in nails or screws. With the BoWrench, you'll save time, create a long-lasting surface and maximize your materials. Visit www.cepcotool.com.

Highest Quality, Lowest Cost

GREAT RAILING

Railing • Decking • Fencing

VINYL RAILING



Square Spindle
Square Rail Kits \$10 a foot



Colonial Spindle
Colonial Rail Kits \$12 a foot



Round Spindle
Round Rail Kits \$11 a foot



Highest Quality and Lowest Cost!

These Rails are Great!

Passes even the "Toughest" building codes

1,350 Pounds of Concrete!



AMPRO
DECKING

Light Grey
Khaki
Dark Grey
Tuscany

100% Solid PVC Decking Starting at \$2.45 a Lineal Foot

856-875-0050

www.GreatRailing.com





RELAX...DUCKBACK HAS YOU COVERED!



BEFORE



**AFTER USING
DECK & DOCK**



OUTDOOR SUCCESS!
FOR ALL SEASONS AND ALL ENVIRONMENTS

DIY FRIENDLY COATINGS WITH CONTRACTOR GRADE RESULTS

NEW! Superdeck® Deck & Dock Elastomeric Coating fills cracks and resurfaces extremely damaged wood by sealing and protecting it from further damage. Skip total deck replacement by using Deck & Dock!

For all your home improvement projects look no further than Superdeck.

Choose from a full line of exterior wood stains and finishes for maximum protection of wood siding, decks, fences and more. The ease of use and longevity of Superdeck coatings have made it a DIY and contractor's favorite for over 20 years!



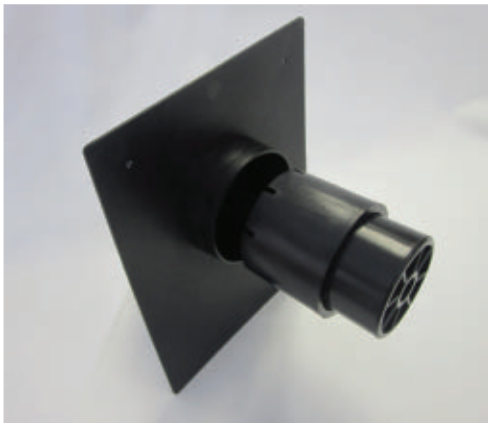
DUCKBACK™
DUCKBACK.
Live the Outdoors!.

SUPERDECK.COM 1-800-825-5382

UPDATE FOR DECK BUILDERS

ATTACH-A-DECK

The Attach-a-Deck device along with the Stucco Boot mounting platform are tested structural deck-ledge spacing systems designed to help prevent water from seeping into the building envelope. There is no need to remove siding from the home with the use of Attach-a-Deck devices. The deck ledger serves as the custom template for laying out the holes that are drilled through the siding down to the structural rim/band joist of the house. The mounting holes are drilled through the siding, and the Attach-a-Deck cups are then mounted and sealed to the house prior to installing the ledger board. Attach-a-Deck can be



used on all wood siding, existing stucco, Hardiplank, vinyl and log construction. The Stucco Boots are used along with the Attach-a-Deck devices for new construction stucco and in stucco remodeling projects when the sheathing has been exposed during the remodeling process. The Stucco Boot acts as a waterproof platform to mount the Attach-a-Deck device, ensuring an almost 100-percent waterproof attachment. The Stucco Boot allows for an uninterrupted application of synthetic and concrete-based stucco with no flashing break at the deck's intersection to the home, where leakage is most common. Visit www.attachadeck.com.

DECK STAINING TIPS FROM DUCKBACK

Planning to stain or refinish your wood deck? The experts at DuckBack, makers of SuperDeck Transparent Stain & Sealer, offer the following application tips for a professional-grade finish:

1. Brushing is the preferred method of application. Brushing works well on all surfaces and provides smooth and even coverage. Natural bristle brushes are recommended, although poly or pad applicators can be used.
2. Roller applicators work well on rough sawn surfaces. Use a short to medium nap roller.
3. Garden sprayers are a quick and efficient means of application. Back-brush after spraying to eliminate pools and puddles.
4. Airless sprayers are the preferred method for large jobs. Use the lowest setting and a large orifice tip to obtain a reasonable spray pattern and to avoid a fine mist. Back-brush after spraying to eliminate pools and puddles.

Learn more deck-staining techniques at www.superdeck.com.



It's a new day.

Introducing a new generation of NyloDeck. Meet an unmatched combination of beauty, strength and reliable performance that's like no other material. Proven in the marine industry, a patented process using recycled carpet fiber makes NyloDeck incredibly durable and eco-friendly. Great looks and versatility make it the ideal, worry-free deck today and for years to come.

- Impervious to water, mildew, mold and termites; no rot or swelling
- Lightweight, yet strong and easy-to-use
- Unique grain on every color-through, UV-protected board
- Spans up to 24 inches and up to 24-foot lengths

Let us help you build the ultimate deck or dock upgrade, with the confidence of a 25-year warranty and hands-on customer support.

Find out more at www.nyloboard.com.



NyloDeck®

No Wood. No PVC. No Worries.

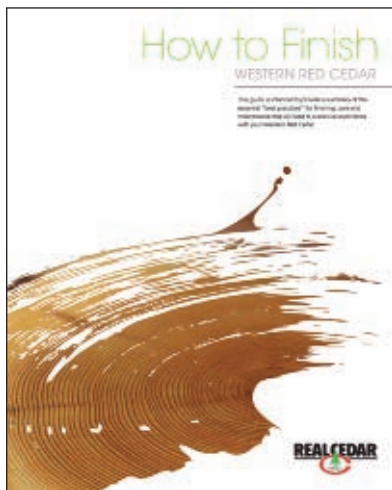
Find us on:



UPDATE FOR DECK BUILDERS

WRCLA GUIDE TO FINISHING CEDAR

Western Red Cedar is a popular decking material because it is easy to work with, and the natural preservatives in the wood fiber help it withstand insects and harsh weather conditions. When properly installed under normal conditions, cedar deck boards lie flat and straight and resist splintering. And in the era of "green" building, Western Red Cedar is a carbon neutral material, while non-wood materials produce consider-



able amounts of carbon during their extraction and production. If you're considering building a cedar deck or other outdoor structure, you can now visit the Western Red Cedar Lumber Association (WRCLA) website for the free guide, "How to Finish Western Red Cedar." Simply go to www.wrcla.org and download the instructions as a PDF.

R4 SELF-COUNTERSINKING SCREWS

GRK Deck Fasteners lead the pack when it comes to quality fasteners for everything inside and outside of the house. The *EHT* staff has used the GRK product line extensively for a wide range of projects, and we've never had a fastener break or cam-out. For wooden decks, the company's R4 Self-countersinking Screw has a new under-head with saw-like teeth and six self-contained cutting pockets for steadfast holding power. Together these features act like a circular saw blade, transporting the "drill dust" away from the edge of the screw hole while cutting a perfectly clean hole into

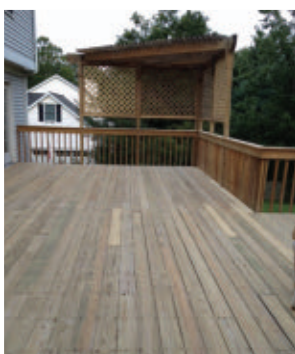


even the most brittle materials without cracking any surface treatment. This design enhances the R4's versatility by allowing the fastener to countersink into even the hardest woods. The screw head closes off the hole with precision, leaving no damaged fibers around the head. R4 screws, which are 2 in. and longer, have a CEE thread that enlarges the screw hole for the non-threaded portion of the fastener. This technological advancement allows the wood to settle easily and increases the screw's drawing strength, reducing the friction on the screw shank and lowering the driving torque. The R4 is a multi-purpose screw that can be used in all woodwork and plastic applications.

DIY DECK RENEWAL

Many old and worn wooden decks can be revived by flipping the decking and staining the opposite sides of the boards. This was the approach taken by homeowner Gary Huston of Basking Ridge, New Jersey. His 20-year old, 720-sq. ft. pressure-treated deck had splintered badly over the years. He reversed the boards, replacing a couple that were badly cupped, and added new top rails. He cleaned the deck with sodium percarbonate, sanded the entire surface and applied a deck brightener. He then applied a single coat of Armstrong Clark Semi-Cedar oil-based wood stain (9 gallons). The pictures show the striking results, and Huston plans to add a following coat after winter.

Refinishing your existing deck boards is not only an economical way to rejuvenate an old deck, but it's an environmentally friendly choice as well. It keeps the existing wood out of a landfill, and saves those replacement boards for someone else's brand new deck. Learn more about Armstrong-Clark wood stains at www.armclark.com.





Build Beautifully with western red cedar

Western Red Cedar has unique, natural performance characteristics that bring warmth, character and longevity to interiors and outdoor living projects around the world. Equally important, Western Red Cedar specifically, has a low environmental impact and carbon foot print when compared with other building materials. But let's face it, its best feature is its stunning beauty that is unmatched by any man made material.

Western Red Cedar offers enormous versatility in styles and applications. Whether you choose to add warmth to an interior, enhance curb appeal or create that outdoor living space you always wanted, Western Red Cedar will help turn your house into a home.

Assure yourself of quality Western Red Cedar for your next project, insist on Real Cedar from members of the Western Red Cedar Lumber Association. Call us or visit the website to find suppliers near you.

www.wrcla.org 1.866.778.9096



UPDATE FOR DECK BUILDERS

I-LIGHTING

i-lighting has upgraded its "Easy Plug Installation System" with new wiring that virtually eliminates installation miscues. Designed with the proprietary "Lighting Simplified" harness technology, each Stair, Deck and Landscape Lighting Kit can be installed separately or in conjunction through a series of connections that easily plug together using either end of the i-lighting extension cables. The new generation wiring system eliminates the A and B connectors and simply plugs together, taking nearly half the time of traditional outdoor lighting systems to install. All of i-lighting's LED lighting systems are developed to provide contractors and homeowners with an all-in-one kit, offering a complete set of fixtures with unique

LED spotlights, wiring harnesses and the fasteners needed for quick and easy installations. Furthermore, each LED light uses approximately 80 percent less energy than incandescent bulbs and is rated for 50,000 hours of

operation. Photocell technology senses ambient light and automatically turns lights on and off, and a remote-control dimmer option can be integrated into the power supply. Visit www.i-lightingonline.com.



Clamping Technology | Cutting Technology | Precision Steel



Simply better.

For 120 years now, whether it is clamping, cutting or steel technology, BESSEY® offers superior innovation, customer service and product quality.

Make the most of our innovative edge and accumulated experience and see for yourself why BESSEY® is... "Simply Better".

Join us on...

YouTube <http://www.youtube.com/user/BesseyTools>
 Facebook <http://www.facebook.com/BesseyToolsNorthAmerica>
 E-Newsletter <http://eepurl.com/erGnk>
 Website <http://www.besseytools.com>
 For information call - 1-800-828-1004

RAPID ACTION CLAMP

The Rapid Action Clamp comes with a double spindle mechanism (for accelerated clamping action) and a guided clamping bolt for very direct pressure. A robust tool to enhance shop productivity.

BESSEY® Simply Better.



AV2 SPACER

With adjustable settings (5-20 mm), durable construction and a wide contact surface area, the AV2 Floor Spacer is a big improvement over wedges or scrap wood for the laminate flooring professional.

BESSEY® Simply Better.



AV2 Video



AUTO-ADJUST TOGGLE CLAMP

The BESSEY Auto-Adjust Toggle Clamp automatically adjusts to variations in work piece dimensions while maintaining constant clamping force from 25 to 550 lbs.



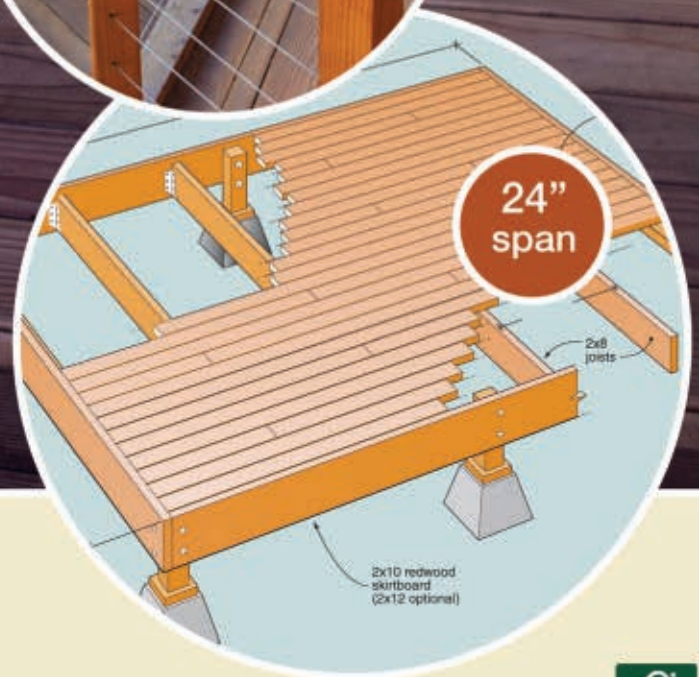
BESSEY Tools offers two horizontal versions and an Inline version with new offerings coming Fall 2012.

Toggle Video



Legendary Strength That Passes The Test Of Time

Humboldt Redwood™ is one of nature's finest and strongest building materials with shear strength up to five times greater than plastic composite lumber. Its strength allows for 24" on-center joists, while other materials require 16" and sometimes even 12" on-center joists... that's almost like building a deck under your deck. So if you want to build an amazing deck with less substructure, less labor, and less cost the natural choice is FSC® certified Humboldt Redwood.



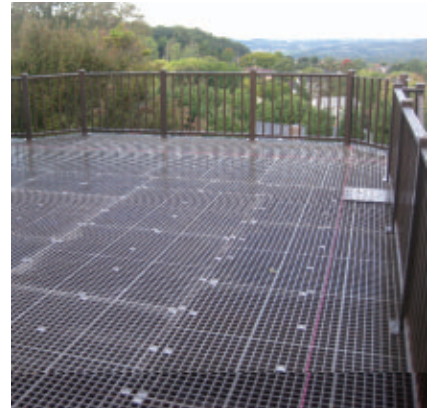
**Humboldt
Redwood™**

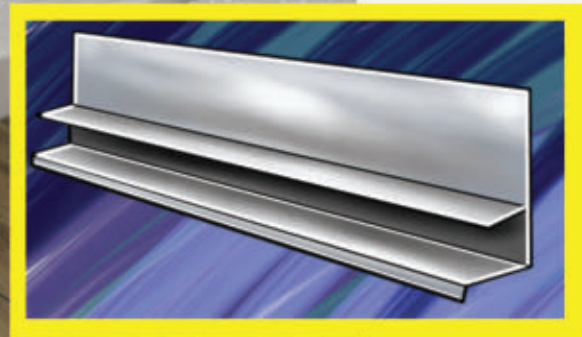
NATURALLY STRONG, NATURALLY BEAUTIFUL

UPDATE FOR DECK BUILDERS

DEXSYSTEMS OUTDOOR FLOOR SYSTEM

DexSystems' Outdoor Floor System is an excellent choice for surfacing the walking surface of your outdoor rooms in any climate and application condition, and all without the use of traditional cement-based mortars, grouts or adhesives. This outdoor flooring system converts traditional decks to a stone deck or terrace with your selection of gauged stone or tile. Or, surface the DexSystems' underlayment system with brick, concrete or stone pavers without traditional sand beds. Construct a rooftop patio or outdoor floor with removable panels. The lightweight engineered components of the Outdoor Floor System make outdoor living practically a maintenance-free reality. The standard application condition is to fasten the GratedeX underlayment panel directly over joist framing members at 16- or 24-in. on-center. The open-celled structural panel is rock solid, and because it's lightweight, no framing modification is required. Visit www.outdoorfloorsystem.com. **EHT**





“There are an estimated 40 million decks in the United States which are over 20 years old,

resulting in more than 224,000 deck failures over a five year period. Nearly 60% of these failures were due to structural issues which led to 79% of all deck related injuries. Failure of the house to ledger connection was a contributing factor.”

**Reduce
moisture related
deck ledger
issues with our**

EVERFLASHINGTM

Patented

The leading edge Flashing for the Deck Professional

Protect your deck and minimize water intrusion and possible ledger failure with Everflashing— an approved non-corrosive flashing available in Stainless Steel and G-185 Galvanized IRC Code R703.8

**premium
deck flashing!**

Call 800-550-1667 for a distributor near you.

www.qualityaluminum.com www.everflashing.org www.ledgerflashing.info



- Beautifies garages, shops, & work areas
- Easy to install & custom fit
- Hides cracks and stains
- Helps prevent concrete damage
- Reduced noise
- Insulates
- Cushions floor
- Reduces amount of dirt tracked into home
- Durable—5-year warranty
- Virtually seals floor
- Non-porous surface

**Easy
Peel & Stick
Application**



BLT


Better Life Technology LLC

Contact BLT for purchase locations
customerservice@bltllc.com
www.jumbo-floor-tile.com
Qualified distributors—please apply

MADE IN

USA
Patents Pending

G-FLOOR

RaceDay Peel & Stick Floor Tile



Twelve popular colors now available

Fan-Favorite colors of the teams you like best!!



**Available in sizes
12" x 12"
24" x 12"
24" x 24"**







FEATURE

PRESENTATION

Installing a Hardwood Border and Feature

By Rob Robillard

Hardwoods floors offer an unrivaled sense of quality that survives home building trends and decorating fads. Hardwood flooring includes many species of wood and finishes, ranging from traditional classics such as oak and ash to contemporary styles like maple and the unusual patterns of exotic hardwoods like Brazilian Tigerwood or African Sapele.

If your personal style is more cozy and rustic, you might want to consider hickory or cherry hardwoods. Add a hardwood border and feature strip to any hardwood flooring installation and you're talking high-end curb appeal. A border usually consists of 8 to 12 inches of similar flooring material running along the wall. A feature strip is an accent that highlights and shows off the decorative borders as well as enhances the hardwood flooring installation.

WHY USE A BORDER AND FEATURE STRIP?

Adding a border and feature strip to your next hardwood floor installation is a great way to show off your artistic side and create a floor that either follows a classic design or showcases your artistic flair.

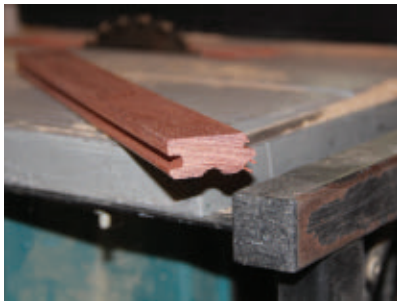
FEATURE

PRESENTATION

When I see a border and feature strip installed in a hardwood floor I immediately think “high-end and quality.”

Border and feature strips are becoming more popular these days and are mostly seen or associated with expensive homes and remodels. Borders are typically done in the same material as the rest of the floor or “field”. A border frames the “field” of the flooring much like a picture frame, enclosing the ends of the rows with flooring that runs perpendicular to the rows, so the rows do not terminate into a wall.

A feature strip, which can highlight the border, is usually darker and can be made from many different materials, shades or sizes. Walnut and mahogany seem to be the most popular in my neck of the woods, probably because they’re offered in many shades. (This project shows Santos Mahogany.)



For this project the feature strip was made from a dark Santos Mahogany.

The feature strip connects to the flooring with a tongue-and-groove joint.



In hardwood floors, a border frames the “field” of the flooring much like a picture frame, enclosing the ends of the rows with flooring that runs perpendicular. A feature strip is a course of flooring made from a different material that accentuates the border.

When considering installing a feature strip in your hardwood floor, the best time to do it is when the floor is being installed. The cost of installing a feature strip is mostly labor since the amount of materials used is minimal.

People often ask where a feature strip should be placed. That’s a personal choice but many if not most features strips run along the borders of walls, typically 6 to 12 inches off the wall but not so far that it disappears under the outer perimeter of an area rug.

One rule of thumb that I follow is to use one strip in smaller areas and double strips in actual rooms or larger spaces. Typically I use standard width boards for blind-nailing purposes. Thinner strips can also be used by milling down strip flooring and installing face nails.

Adding a border is usually a separate labor charge, and the

feature strip can add anywhere from \$1.50 to \$10.00 per lineal foot depending on the material cost.

DESIGNING A BORDER AND FEATURE STRIP

When deciding on a border and feature strip, make sure to research and choose a material with a density similar to your flooring so it will wear evenly. If you choose different density materials you may be unhappy in a few years when they wear at different rates.

Layout is also important. The border and feature strip planning and measuring must be done before a single board is laid. One small mistake can grow exponentially into an installation disaster later.

Use a combination of 3-4-5 triangle measurements, large squares and parallel measurements to determine the layout of

Continuing to Innovate for Your Flooring Comfort!

For more than 10 years we've been manufacturing flooring underlayments from recycled materials. We were "Green" before it was fashionable. In the early days, our competitors scoffed at our "ugly" pads, but today everyone else is scrambling to "invent" their own green story. Thanks to all of you that have helped make QuietWalk one of the best known, best selling, and best performing floating floor underlayments on the market today.

Thousands of satisfied customers have installed literally acre after acre of our products. There's a reason that more and more architects and designers specify flooring underlayments from MP Global Products... and most qualify for LEED credits (Leadership in Energy and Environmental Design) as established by the United States Green Building Council. Furthermore, our products are certified by Scientific Certification Systems (SCS) for recycled content and as a clean air contributor.

Made in the U.S.A.



QuietWalk[®] Acoustic Floor Underlayment

NEW! From the company that brought you QuietWalk...



VERSAWalk[™]

Universal Underlayment

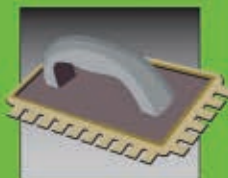
Our most Versatile Underlayment product yet!



Float It



Nail It



Glue It



global products L.L.C. BOOTH #B3363

888.379.9695 | quietwalk.com



FEATURE

PRESENTATION

your border and feature strip.

There is an old carpentry rule that a small error in the foundation can compound itself and become a big error by the time

you build the roof. This is also true for hardwood flooring.

Be sure to allow a minimum expansion gap of 3/4 inch around all vertical obstructions.

COLOR, SHADE AND JOINTS

Hardwood flooring comes in boxes and often you might receive different cuts or "lots" of wood from a flooring manufacturer. Take the time to open and install the flooring from several cartons at the same time to ensure a good mix of color and shade.

Go Dustless It's not dustless... unless it's **Dustless®**

NEW! **SawBuddie™**

DustBubble™

Stick it
Drill it
Toss it!

Turbo Drywall Sander

ORBITAL

Orbital sanding head is powered by air flow from the vacuum.

HEPA and Wet/Dry Vacuums

DustBuddie®

CutBuddie®

DiscBuddie™

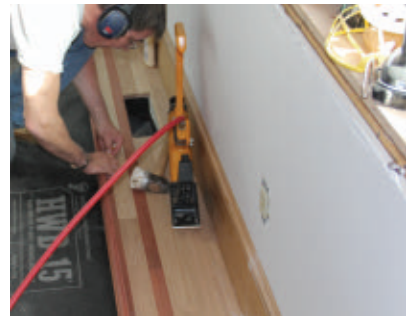
BitBuddie®

Dustie®

ChipBuddie™

BitBuddie®

Dustless®
800.568.3949 TECHNOLOGIES
See online videos at dustlesstools.com



Eight to 12" out from the wall is a good place to end the border and start your feature strip.



The flooring was fastened over a moisture barrier using a heavy-duty flooring stapler.



The ends of the intersecting rows of the border use a consistent and overlapping pattern in the corners, not unlike a herringbone pattern.



Stagger the joints of floor boards at least 4 to 6" between adjacent rows.



When filling the field of the floor, work from the two opposite longest rows toward the center of the floor.



Where the field rows terminate into the exposed tongue of the border, carefully mark the length of the final boards.

The layout of your flooring is important. Be attentive to joint spacing and staggering the ends of floor boards at least 4 to 6 inches, between adjacent rows. This small detail will make a big difference once the entire floor is in. By installing the floor with random joist spacing you will achieve an overall nicer looking installation.

INSTALLING A BORDER AND FEATURE STRIP

As with any hardwood floor installation, take the time to orient or, if needed, cut and scribe the

first border boards to ensure the row is parallel to the opposite wall. Check and double-check this before starting the installation.

Contrary to popular belief, there

Goddard Spiral Stairs

- CUSTOM DESIGNED
- HANDCRAFTED
- BUILT TO YOUR SPECS!



At Goddard Manufacturing Co., we specialize in custom designed, handcrafted spiral staircases - built to your specifications. You can choose from several different styles of spiral staircases and our professional craftsmen can custom design a spiral staircase to fit almost any application.

MENTION THIS AD FOR A \$10.00 DISCOUNT!

Goddard Manufacturing Company
PO Box 502, Logan KS 67646

Toll Free: 800-536-4341

www.spiral-staircases.com

FEATURE

PRESENTATION

is no need to “square” your border around the walls of the room. Borders don’t look right if not running parallel to the walls.

Use the same flooring material on the borders as in the middle “field” boards.

When installing the border and feature strip, use a consistent and overlapping pattern in the corners. This pattern, not unlike a herringbone pattern, is a pleasing finish detail.

Generally you will follow the walls with your feature strip and avoid going into small nooks with it, which makes it look too busy. In these situations, fill in the nook with a larger border (“field” boards).

When installing the feature strip you can either install a full width board and blind-nail the board or rip it smaller to a desired width and face-nail it in place. Since the feature strip is highlighted in the floor I prefer to hide the nails.



Use a tongue-and-groove router bit to shape the ends of the boards.



Tools⁴Flooring

The Professional's Choice—Worldwide

Selection, Service & Price on Brand Name Quality Products



- Most orders ship within 24 hrs.
- FREE shipping available
- All major credit cards accepted
- Secure on-line ordering
- Lease-To-Own financing available



- Bosch • Bullet Tools • Crain • Duo-Fast • Felker • Gundlach • NCE
- Orcon • Personna • Powernail • Roberts • Sinclair • Taylor • And many more...

Call us Toll-Free 866.634.1189

www.tools4flooring.com

Elastilon[®]

Self-Adhesive Hardwood Flooring Installation System

70 year
Limited Warranty



Now You Can Install Solid
Hardwood Floors In Any Room.
**NO NAILS, NO GLUE.
NO MESS.**

Elastilon is the patented self adhesive hardwood flooring installation system that is revolutionizing the way floors are being installed around the world. The Elastilon Strong system **replaces nails, nailing guns, compressors, messy adhesives, specialized adhesive trowels and chemical cleaners** with one simple installation tool — a utility knife. **Installation times are cut in half** and installations are so simple that even a home handyman can do it.

Elastilon allows almost any species and thickness of hardwood flooring up to 3/4" thick to be installed over almost any surface, be it wood, old vinyl tiles, linoleum, ceramic tiles and, with the proper installation, directly over **concrete** — above, on or even below grade. No fuss, no mess!

Once your floor is installed with Elastilon there is a permanent elastic bond that allows for the natural expansion and contraction of your floor while always helping to reduce gapping, cupping and buckling. The Elastilon membrane reduces both airborne and impact sound transmission, increase underfoot comfort, allows for installations over in floor heating and can be walked on immediately following installation.



Want to learn more about Elastilon and save money at the same time? Visit us at www.elastilonusa.com/coupon for complete details on becoming an Elastilon Expert and find out how you can receive up to a **\$500 cash back rebate** on your first purchase.



Elastilon[®]USA

TOLL-FREE (877) 526-9663 www.elastilonusa.com

FEATURE

PRESENTATION



With grooves cut into the ends, the final boards in the field should lock onto the tongue of the border.

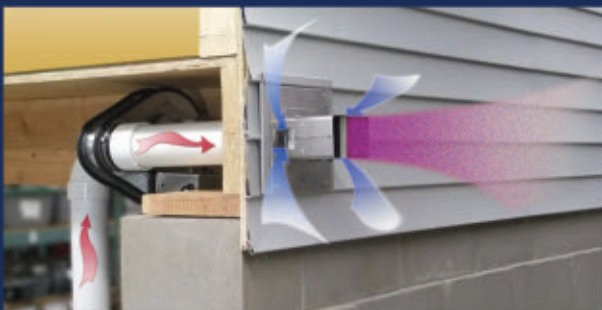
It's a good idea to use construction adhesive to glue down the final center board.

For a good finish, it helps to sandwich the feature strip between two similar direction border boards. This keeps all the end joints of the field boards off the feature strip.



RADON VAC™ Side Wall Radon Mitigation System

*The Effective and Low Cost
Solution for Existing Homes*



- ◆ Hood dilutes and propels exhaust away from home
- ◆ Eliminate intrusive interior or ugly pipe runs up home's exterior
- ◆ Sealed blower housing prevents leakage
- ◆ Quiet, efficient operation—uses only 50 watts
- ◆ 10-year, no maintenance warranty



Tjernlund Products, Inc.
800-255-4208 • www.tjernlund.com

TJAK®

ALL PURPOSE SUPPORT TOOL

The T-JAK support tool easily adjusts from 53 in. to 84 in. and safely supports workloads up to 400 lbs.



The complete T-JAK Support System adjusts from 15" to 108"

- kitchen Cabinets
- Drywall Ceilings
- Shelving
- Deck Building
- Light fixtures
- Garage Doors
- Bay and Garden
- Windows
- Tub Surrounds

Pro-Pak Introductory Offer

\$100 Discount!

See our website for details.

1-800-662-3557

www.tjak.com

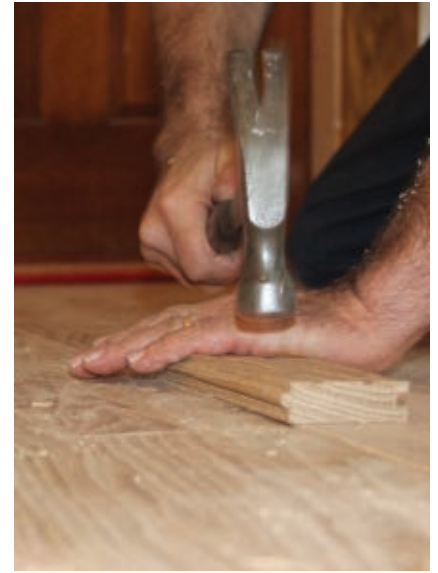


FILLING IN THE FIELD

Complete the entire border and feature strip on at least three if not all four walls prior to filling in the middle “field” boards.

When you reach the opposite end of the room, use a tongue-and-groove router bit to rout the ends of the field boards so they fit onto the border tongue and lock in place. When doing this, hold the last two boards slightly off the floor at their joint. Slowly lower the two boards down and then slide the boards into place over the previously installed board tongue.

Routing the last board is better than gluing and nailing it in place. Routing this board provides a much better joint and allows for natural and seasonal movement without breaking apart. If a glue bond fails, then you will end up with gaps.



Use a table saw to rip the tongues off the boards in the final row to finish the field. It may be necessary to rip the final row to a width that will fit.

You may need the assistance of a wood block to “persuade” the final board into place.



**Unmatched Comfort.
Unrivaled Technology.
Easy Installation.**

Warmboard-R is an ideal radiant heating solution for remodels. Our fast-response panels use the lowest water temperatures in the industry, reducing your energy bill year after year. Nail hardwood down directly or use any flooring type. Install manuals, videos and our helpful staff are available to answer any questions.

Get started today.
1.877.338.5493

warmboard.com

INSTALLING A FLOOR WARMING OR RADIANT SPACE HEATING SYSTEM

It was the beautiful look of traditional hardwood flooring and ceramic tile that excited my wife and I at first, but we had to find a radiant heating system that would work with them and we found ZMesh. How did we find out about ZMesh? A good friend of ours, in the remodeling biz, told us about ZMesh by Heatizon Systems and described how versatile and easy it was to install. After further investigation we confirmed that ZMesh could warm the carpet, hardwood, and ceramic tile flooring we wanted and it was easier to install and offered more features and value than the other systems we considered, but there were other things that swayed us that I want to share below.

THE TECHNICAL SUPPORT

Since we planned to install the radiant product ourselves, the availability of technical support was important to us. Heatizon offered complete technical support from its Murray, Utah headquarters via chat, telephone, and email without a hassle.

THE WARRANTY

Obviously we wanted a radiant heating system that was designed to last for a very long time, which is another reason we selected ZMesh. ZMesh is made of bronze so it won't wear out, corrode, or break down like some of the other products do (over time) that we evaluated. ZMesh is also backed by a 25 year warranty.

CHANGING FLOOR COVERINGS

After seeing and installing ZMesh, we can easily see why the friend that recommended it said: "ZMesh is the last radiant heating product you will ever need to purchase." When we need to replace our floor coverings there is absolutely no reason to think that we will need

to replace ZMesh. Unlike cable and pex products that are embedded in cementitious materials, ZMesh is installed "under" our floors not "in" our floors.

STATE OF THE ART TECHNOLOGY

ZMesh can be nailed through! This eliminated the need for sleepers, light weight concrete, and unnecessary floor buildup. Also, ZMesh creates a very mild and gentle heat that warms the floor. ZMesh also satisfies the needs of most heat loss requirements for primary heating. We found many electric radiant products require special equipment to be installed in the distribution panel, but ZMesh does not require a (GFCI) breaker because the safeties are built into the Control Unit and this computer technology constantly monitors the entire system.



DESIGNING & INSTALLING OUR FLOOR WARMING SYSTEM

Once we had selected ZMesh for our project, the next step was to get a quote and installation plan. All we needed to provide were the dimensions of each area, whether we wanted to only warm the floors or to heat the entire space, what floor coverings we had selected and where we wanted the control unit and thermostat located. Within 24 hours after providing the information we had a firm price quote for the exact materials we needed. Once we made the decision to purchase, the materials arrived shortly after and Heatizon helped us with a plan to lay out the system for the installation as well as any other preparation questions we had. We did take advantage of the quick, personalized and responsive technical support program from Heatizon and also watched the installation videos available on their website at www.heatizon.com throughout the installation process. We really felt we were dealing with knowledgeable and experienced professionals.

The installation of this system went nicely and we have now been enjoying our radiant heating system and can attest to the fact that Heatizon products work as advertised and are so easy to install that even we could do it.



RADIANT HEAT

Low Voltage ZMesh



Line Voltage Heatwave



Low Voltage Tuff Cable



Safety, Longevity, & Reliability



*Thin Profile
Installs in Showers
Can Nail Into ZMesh
For Large & Small Areas*

**Floor & Space Heating
products for any application**

Browse our
low & line voltage
products online!



www.heatizon.com



Contact us
888-239-1232

HEATIZON
SYSTEMS



Tired of Cleaning Clogged Filters?



The Dust Cobra®

A unique All-in-One high suction dust collector.
(70" SP in inches WC)

Rapid Pulse Filter Cleaner

Internally cleans the HEPA filter in seconds.
No filter removal - no mess!

Perfect for the small shop!

For example:
12" planer, 6" jointer,
portable table saw, all bench top and portable tools.

▶ Full unit HEPA certification - Meets EPA RRP requirements including lead.

▶ Approx. 4' 4" tall and 20" x 20" with Mobile Cart.

See Dust Cobra® Video at www.oneida-air.com

Vacuums not included.
Pat. # 7,282,074

Dust Deputy®

Captures 99% of the dust before it reaches your vacuums' filter.

Deluxe Dust Deputy®
\$89.00

Retrofits to any shop vacuum.



The Dust Deputy® wins cyclone separator shootout! by "The Wood Whisperer.com"

Go to [Dust Deputy's at www.oneida-air.com](http://DustDeputy's.at/www.oneida-air.com) to watch the review.

Dust Collection Systems and Components Since 1993.

Oneida Air Systems™ is a proud sponsor of Rough Cut-Woodworking with Tommy Mac

Like Us Made in the USA

ROUGH CUT
WOODWORKING WITH TOMMY MAC

Call Today for **FREE** Catalog!
1.800.732.4065
www.oneida-air.com



Dust Collection Since 1993.

FEATURE

PRESENTATION



Face-nail to fasten the final row securely.



One rule of thumb is to use a single feature strip in smaller areas and double strips in actual rooms or larger spaces.

One method that works well is to install both sides of the field at the same time and work toward the middle. Working to the middle ensures that the outer edges are consistent and leaves the last board in the center. This ensures that you do not install the last, and most likely thinner, board next to the highly visible feature strip.

When you get closer to the middle, instead of finishing the field with one really thin narrow strip, you can always rip a little material off several boards and re-groove them to finish the floor without bringing attention to a much narrower strip.

Usually, however, a slightly narrower board will not be picked up in the middle of the floor and is usually hidden under an area rug.

For the last piece: On a table saw, rip the tongue off the second to last piece and install it. Then rip the last piece to the necessary width and install it using construction adhesive and face nails. Many times you will need the assistance of a wood block to “persuade” this final piece into place. **EHT**

Editor's Note: Robert Robillard is a remodeling contractor based in Concord, MA. He is also the editor of a www.AConcordCarpenter.com. Visit his website to learn practical solutions to your home improvement problems.



The border and feature can follow the walls throughout a home for a consistent decorative effect.



Shown is the completed floor after finish has been applied.

GUHDO®

Advanced Technology Saw Blades



Precision Balanced



Perfect straightness



Superior grinding



Noise reduction



Maximum Life

Electrostatic Coating



Reduces friction



Protects against corrosion



Prevents resin build-up



Maximum Performance



The new GMAXX series from GUHDO

100 years of German Tooling
Innovation

www.guhdo-gmaxx.com

A Roof Top Renewal

DIY Repair of an Asphalt Shingle Roof



By Clint C. Thomas, Esq. Photos by Zoe Thomas

The roof is one critical component of a house. Every house has one, but very few homeowners know what to do when it begins to wear-out, other than call a roofing contractor. Minor leaks can often be repaired with silicone or roofing cement, commonly called "tar," or as it is known in the industry, "bull." But what about an area of a roof that has multiple leaks that result from hail damage or a roof that has simply exceeded its life expectancy?

One solution to this dilemma is to re-roof just the problem area. Roofs are often divided into

different sections as a result of a home's construction. Adjoining roofs create valleys, as do the intersection of gables with the main roof. Ridges are formed at the apex where two roof planes meet. Each side of a ridge or valley is actually independent of the roof on the other side of that same landmark. Furthermore, some rooms in a house may have different heights than other portions of the house, especially if there has been an addition that has been made to the original construction. These different roof areas help to simplify re-roofing jobs by enabling repair of only the

problem area rather than the home's entire roof system. There are two ways to re-roof a house. One is to remove all of the existing asphalt shingles, install new roofing felt, which is commonly referred to as "tar paper," and then reapply new flashing and shingles. If you have ever done any roofing work at all you know that it is not technically difficult but it is very labor intensive. Stripping old shingles off a roof is hard, hot and nasty work and should not be approached lightly.

The second alternative when re-roofing a portion of a house is to leave the existing shingles and flashing in place and install new shingles over the old. This method avoids the labor involved in a tear-off, the old layer of shingles helps to add an additional layer of protection from the elements, and the old shingles also provide a ready-made grid that can be followed when installing the new shingles. Without the old shingles to follow, it is necessary to lay out horizontal and vertical control lines to follow when installing the new shingles. Without these lines or some other guide, such as the old shingles, the new shingles will not be straight and will look like a twisting snake.

Roofing over an existing roof can be done up to two times without any problem. This means that the original roof can be roofed over once and then once more for a total of three layers of shingles. It is a bad idea to put more than three layers of shingles on any roof because of the shear weight of the shingles. If too much weight is applied to a normal roof it is likely to collapse under the strain.



A Beautiful Roof Transforms a Home Into a Masterpiece

DaVinci polymer shake and slate tiles look incredibly natural, but are much more durable than Mother Nature's creations. Backed by a 50-year limited warranty and a Class A fire rating, our tiles offer the beauty to make your home magnificent, minus the maintenance and frequent repair. DaVinci tiles are designed to withstand the most severe weather conditions, resist fading and are impervious to rot, mold and mildew. With 49 standard colors and the capability to create a custom color or match almost any color, every tile reflects the craftsmanship and artistry that accompanies the DaVinci name.



For more information
www.davinciroofscapes.com
www.bellafortebydavinci.com

PREP STEPS

Before launching into nailing down new shingles it is necessary to estimate the number of new shingles that will be needed. There are two common ways to estimate the shingles needed for a roof.

The easiest method is to begin by finding the roof's area. The formula for determining area is length multiplied by width. In my case, the roof measured approximately 10 by 21 ft. for a total of 210 square feet.



Sweep off the old roof before starting work so it is free of debris.



Use a chalk line to mark a straight line on the back side of any shingles that need to be cut.

The next step is to divide the total number of square feet—in my case 210 sq. ft.—by 32 (some people use 29), which is the approximate number of shingles in a bundle. The resulting number indicates how many bundles are needed. In my case, when 210 is divided by 32 the answer is 6.5625. Always round up when estimating shingles. If the quotient to the above formula ends up as a decimal, such as my 6.5625, round-up to the next whole number which was 7 in my case.

Another method is to determine how many "squares" are in a roof. Roof measurements are often figured by the "square." A "square" is 100 sq. ft., e.g., 10 by 10 ft., or any other measurement that arrives at a total of 100. To use this method you must first determine the total number of square feet of the roof to be repaired. Again, on my project there were 210 square feet. This total square footage is then divided by 100, e.g., $210 / 100 = 2.1$. The quotient of this last computation is 2.1 and this is then multiplied by 3 because it takes three bundles of shingles to cover one "square." When 2.1 is multiplied by 3 the product is 6.3. This means that 6.3 bundles of shingles will be needed. Again, round the product up to 7 bundles to be safe.

The only supplies that should be necessary are shingles and flat-head roofing nails. Normally 1-in. nails are used when installing shingles, but I chose to use nails that measured 1-1/4 inches because they had to go through two layers of shingles, the new layer and the original layer, before penetrating the plywood decking that is under all of the shingles.

As an illustration of the money that can be saved, I spent less than \$150 to re-roof my 210 square feet. The shingles were



The easiest way to cut shingles is to cut them on the back side with a utility knife.



Lay the new starter row of shingles upside-down so the tabs are on the top.

\$22.99 per bundle and a 100 count box of nails cost about \$10. The total \$150 is a fraction of what a roofing contractor would have charged me.

HOW TO REPAIR

Before starting the installation, sweep off the old roof with a broom. If there are any missing or broken shingles, make sure to fill in the holes and gaps with pieces of new shingle. It is important that the shingles on the old roof are all on the same horizontal level. You should try to avoid having any dips in the old shingles because this will create visible low spots in the new roof.

With all of the measurements made and the prep work complete,

it is time to begin installing the new shingles. Begin at the bottom of the roof and install what is called the "starter row." The first row of new shingles will be installed over the first and second rows of existing shingles, and—this is very important—this new row of shingles will be installed upside-down. Shingles are divided into two sections. The upper section is solid while the lower section is divided into three "tabs" by open spaces between each tab. Shingles are normally installed with the tabs facing down and the solid portion on top. A starter row is the exact opposite. The solid row is on the bottom to keep water out. If the tab side were on the bottom of the first row then water would simply run between the tabs and your roof would leak.



Stagger all of the tabs to keep water out of the roof system.

The second row of new shingles is laid with the tab facing down and should abut the bottom edge of old third row of shingles.



Sleek & Discrete Insect Screening System






Installs interior or exterior as well as inside or outside of opening. Accepts any screen. Use on ANY shape opening.

- patent pending -



- NO LOSS OF SIGHT LINES -
- NO REDUCTION IN OPENINGS -

Visit our web site for additional information, retailers, or free product sample

Connecticut Screen Works, Inc. 203.741.0859
www.connscreen.com
Dealer & Distributor Inquires Welcome

THE NEW ENGLAND SLATE COMPANY



The New England Slate Company specializes in providing quality slate roofing for repair work, slate roof restorations and new construction.

- Extensive inventory of most common sizes and colors
- Custom slate-cutting service for special shapes/patterns
- Call our friendly staff to discuss your custom project



888-NE-SLATE
WWW.NESLATE.COM



Nail the new shingles down.

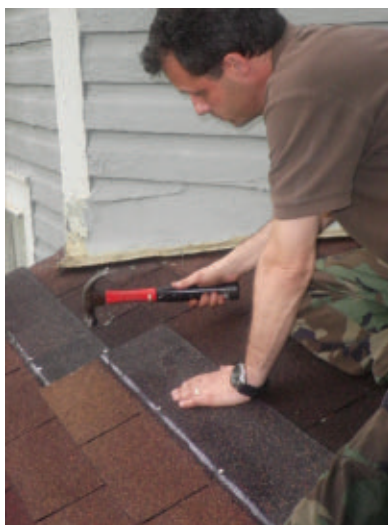


Shown are the first three courses of new shingles laid over the old shingles.

Nailing the new shingles in place is the most time-consuming part of the job.

It may be necessary to cut some of the height off of the "starter row" to keep these shingles from overhanging the edge of the roof too much. You can cut shingles with a standard utility knife, making the cut from the underside of the shingle. The top edge has bits of asphalt embedded to help protect it from the elements (which makes it hard to cut). The underside is smooth and can be cut with ease.

The second row of new shingles is laid with the tabs downward over the upper section of the new starter row, so that the second row overlaps half of the first row. This overlap is what keeps water out of the house. The upper edge of the second row of new shingles is laid adjacent to the bottom edge of the third row of old shingles. The next



upper-most row, the third row in this case, will be used as both a horizontal and a vertical guide for laying the new shingles. The old shingles take the place of the horizontal and vertical lines that I mentioned earlier.

The vertical lines refer to the alignment of the gaps between the tabs on the shingles. If all of the shingles are aligned so that the gaps are directly over the gaps in the lower row then water will run between all of the shingles and the roof will leak. It is absolutely necessary to make sure that every tab of each new row is centered directly above a gap in the preceding lower row of shingles. By staggering gaps and tabs on each successive row, water will not have an opportunity to find its way between the shingles.

Shingles are nailed along the "tar line" in the middle of each shingle. This is the portion of the shingle that is directly above the tabs and gaps. Four nails are used that are evenly spaced along this line with one nail placed one inch inward from each outside edge with two more nails in the middle. The nailing of the new shingles is the most time-consuming part of a re-roofing job, so any help that can be elicited from your friends will save a lot of time.

Square roofs are easy to install because the only cutting required is along the outside edges when

QUICK ROOF ULTRABOND

Cofair Products' new Quick Roof Ultrabond with Steel-Loc adhesive sticks to almost everything. It instantly stops leaks and permanently repairs roofs, gutters, skylights, windows and flashings, and will even stick to brick and concrete. It can be applied to most non-porous surfaces when wet, and in some cases even while submerged under water. The adhesive's remarkable bonding properties are the result of its proprietary blending of unique synthetic co-polymers and butyl rubber. Available in both black and white finishes, it can be installed to temperatures as low as 25° F without the need for primer, and it keeps on sticking from -70° F to 200° F. Made in the USA, Quick Roof Ultrabond has a 15-year limited warranty and is guaranteed to never crack, harden or shrink. By just removing the "easy release" backing paper and pressing in place, both the DIY'ers and pro contractors can easily stop leaks in almost any structure. Visit www.cofair.com.





Use a Speed Square as a straight edge for making short cuts with a utility knife around obstacles or to conform to angles that you encounter.


BELLAFORTÉ SHAKE FROM DAVINCI ROOFSCAPES

As a long-lasting alternative material for new roofing, Bellaforté Shake polymer roofing tiles have a multi-width appearance that replicates hand-split real cedar shakes with slanted sawn edges and staggered lengths. The tiles feature snap-fit tabs and a self-alignment ledge for easy installation. The roofing tiles come in 49 colors and a selection of five color blends, including Abruzzo, Espresso, Toscano, Verona and Harbor Gray. Available nationwide, a square of 12-in. Bellaforté Shake (with 100 pieces per square) weighs just 190 pounds. This lower tile weight helps reduce installation time and transportation costs. Just as with other DaVinci products, the Bellaforté Shake tiles are 100 percent recyclable and come with a 50-year limited warranty. Learn more at www.davinciroofscapes.com.



Spade

6 CUTTING EDGES



Agressive




Spade



Video


Order Spade



Amazon

Brad

6 CUTTING EDGES



Speed

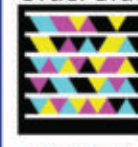


Brad



Video

Order Brad




Amazon

Forstner

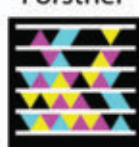
9 CUTTING EDGES
3 ON EACH BLADE



Deep Bore



Forstner



Video

Order Forstner



Amazon

When performance countsTG Tools United Co.

TGTools@sbcglobal.net or 800-687-4122 or www.mytgtools.com

shingles have to be staggered. Invariably, most roofs are not exactly square, or at least have that one odd corner that complicates the do-it-yourselfer's job.



When an angled wall is encountered it is necessary to cut the new shingles in the same geometric shape as the angle.



Old flashing can often be reused by gently lifting up the old flashing with a pry-bar or framing hammer and sliding the new shingles under it.

When an angle is encountered the shingles will have to be cut to conform to that geometric pattern.

Normally, the only flashing that will have to be replaced on this type of project is in the valleys. Unless there is obvious damage, drip edges and wall flashing can typically be reused without any problem. In order to get the new shingles under existing wall flashing it is helpful to have someone else use a crowbar or framing hammer to gently lift up the bottom edge of the flashing while you slide the new shingle beneath it.

In addition to being very labor intensive, roofing work is normally done where there is very little shade. I highly recommend planning any re-roofing project around

the seasons and the elements. Fall and spring will provide the most moderate temperatures for this project. Begin early, as in first light, to take advantage of the sun being low in the sky. Black attracts heat, and since most roofs are dark it is not a good idea to be on a hot roof at 2:00 o'clock in the afternoon in the middle of summer. In fact, most professional roofers will begin work at daybreak and stop working for the day shortly after lunchtime.

The next time that a portion of your roof needs some attention, consider re-roofing over the existing layer of shingles. It will save you a lot of money and it does not require expensive or specialized tools—just a hammer, a box of nails and a utility knife. **EHT**



Here's the completed roof.

RECYCLED RUBBER ROOFING

For both new construction or repair work, Specification Chemicals' time-tested systems take away the worry of leaky roofs. Recycled Rubber Roofing (RRR) contains crumb rubber from recycled tires. It cleans up with water, expands and contracts with the roof surfaces and does not soften or become brittle with the heat of the sun. When used as an underlayment RRR quickly builds up the thickness of the roof coating, saving time and money. A finish coating with White Plastic then seals the roof with a white reflective finish. Visit www.spec-chem.com.



DrySnap

Under Deck Rain Carrying System

Maximize Your Outdoor Living Space!

- Maintenance free vinyl panels
- Creates dry space under decks
- Easy snap together installation

DrySnap.com

Before

Check out our new website at Amerimax.com

Amerimax
EXTERIOR HOME PRODUCTS

YARDCRAFTERS™
Vinyl Railing Systems

Safety Style Performance

Amerimax.com/products_patio_yardcrafters.php

Available in two styles;
"Classic" square balusters and
"Colonial" turned spindles

- Maintenance free
- Guaranteed for life

- Meets building codes
- Many Accessories available



Sand



White



Clay

Fresh Juice

Diagnosing and Replacing an Alternator



By Tim Walton Photos by Larry Walton

Getting started in the morning has always been a challenge for me. Please don't ask my wife about my energy drink budget.

Recently my truck was having a hard time getting started, as well. My Ford's diesel engine uses a glow plug system to preheat the cylinders enough to help combustion on cold startup. This system alone is taxing on the electrical system as it pulls a large amount of amperage. Add to this the sheer weight of the large 7.3-liter engine, which must be turned by the starter. It's little wonder these pickups come equipped with two batteries.

What about the alternator? We're getting to that. When my

pickup began having cold starting issues last winter, I didn't address it or even give it much thought. I ignored that it was cranking longer than normal. This ultimately led to the demise of the batteries, which appeared to be the originals and were probably due anyway, right?

Since the electrical system components are linked, the alternator had to work harder to charge weak or old batteries. Batteries can only take a charge a certain number of times, but even fewer when full discharges are part of the program (like when your vehicle's engine won't even turn over because of lack of power).

The engine cycled slowly, but the death spiral for the electrical

components went on quite nicely. Was it the weak glow plugs that caused the battery failure? The battery failure that caused the alternator's demise? Or was it a failing alternator that brought on the battery death?

The moral of this story: Pay attention to starting issues early, which can save you time and money. Replacing the faulty component can save the others. Ignoring the problem can come at a high price in parts, not to mention the consequences for being late to your destination every morning.

However, if you do have a bad alternator or batteries, you can save yourself some cash by diagnosing the problem early. Installation of these simple components is something you can do yourself.

Here is how we replaced the alternator on my pickup after replacing the batteries.



Make sure to disconnect the battery (or batteries in our case) before doing any work on the electrical system.

Two GREAT Lead based Paint Strippers!

Made from soybeans!

100% Biodegradable • Easy Clean Up • Removes MULTIPLE layers

These two great lead based paint strippers are a great addition to your store for your customers. They contain no methylene chloride, are not alkaline based strippers and each cleans up easy with a degreaser or water. Unlike traditional strippers, SOY•Gel and LEAD OUT let your customers work without the odor indoors or outdoors for a guaranteed safe restoration process!

SOY•Gel™

Paint & Urethane Remover

SOY•Gel is designed to remove multiple layers of virtually any type of coating. Gel formulated for easy use on horizontal and vertical surfaces. During the removal of lead based paint, lead becomes encapsulated in the gel, preventing air born lead particles, allowing for safe and easy disposal. Our tried and true paint stripper SOY•Gel is a customer favourite for any restoration job!



Restored antique kitchen cabinet



Multiple layers of old varnish removed

Franmar's LEAD OUT™

Lead Paint Remediator/Remover

Franmar's LEAD OUT is a new exciting lead based paint remover that renders lead paint nonhazardous for safe removal. LEAD OUT uses a special patented system that reacts with lead at the molecular level to alter the lead compound to a nonhazardous compound permanently. The result is a simple and affordable way to safely remove lead-paint.



Lead paint removed from an early 1900's home in Chicago



Heavy metal paint bridge restoration



** sold in quarts, gallons, 2.5 gallons, and 5 gallons

** sold in quarts, gallons, 2 gallons, 5 gallons

 **FRANMAR**
Chemical®

Call Today!
800-538-5069 www.franmar.com



Diagnosing a problem by replacing parts is often not economical. We used a battery/alternator load tester to make sure the alternator was bad. It could also have been a fusible link or fuse that prevented the batteries from charging.



Locate the accessory/serpentine belt tensioner so you can loosen the belt enough to get it off the alternator pulley. Note the routing of the belt for reinstallation later.



The tensioner on the 7.3-liter Power Stroke accepts a 1/2-in. drive or breaker bar. Rotating the ratchet will give you enough slack to remove the belt.



Remove the bolt that fastens the power lead wire to the alternator.



Disconnect the electrical plug that goes to the voltage regulator. Be sure to release the clip and don't pull on the wiring itself.



Break loose the bolts that hold the alternator in place. The oxidation of the steel bolts and aluminum bracket on some vehicles can act like a thread lock, so a longer handled ratchet can help.



Make sure to remove all the bolts which hold the alternator. On the Power Stroke there are only three bolts, which all match and are very visible and accessible. It's a good habit to keep track of the origin of each bolt because length, diameter and thread count can vary with location for some applications.



Set the wiring aside and remove the defective alternator. Make sure you double-check that the plugs and mounting parts on the two alternators are the same.



1. **oneliner** Water Proofing

2. Pre Pitch

3. Kirb Perfect

4. Quick Pitch

5. CertainTeed™
Vapor Barrier

6. Concrete wall Board

7. Bench Seats
& Shelves

8. Soap & Shampoo
Niche

9. Positive Weep

10. Drains

11. Curb Sills Marble

12. Shower Heat



Our new shiny alternator is a direct fit and will mount using the stock bolts.



Plug back in the voltage regulator harness. Ours needed solid pressure, but it did click into place.



Reconnect the batteries on both sides.



Tighten down the bolts making sure to torque them tight enough, as the accessory belt will be putting a decent amount of force on the pulley. Reference a factory service manual if you're unsure about the torque rating to use.



Turn the tensioner again to put slack into the belt so you can reinstall it over the pulley of the new alternator.



We used a multimeter on the DC voltage setting to confirm that the alternator was working properly. We connected the negative lead to the negative side of the battery and the positive lead to the output wire on the alternator.



The lead wire attaches on the back of the unit. Make sure to not over-tighten the nut that holds it in place on the stud. Spinning the stud could break wires inside the alternator. We left the insulating cover back to check the voltage output of the new alternator.



Make sure that you have the accessory belt routed correctly.



The multimeter read over 14 volts when the engine was running. This was a positive change from approximately 12 volts indicated by the old alternator. **EHT**



ecolife™

Stabilized Weather-Resistant Wood

- Superior Dimensional Stability
- Better "Yarding" and Job Site Performance
- Green Building Product
- AWPA Standardized and Building Code Approved
- Lasting Beauty and Limited Lifetime Warranty



1-800-421-8661

treatedwood.com
Viance Treated Wood Solutions

RIDGID R4090 TILE SAW, "THE BEAST"

The *EHT* staff has relied on Ridgid wet saws for years, and we recently had the opportunity to test "The Beast"—Ridgid's new "best-in-class" 10-in. tile saw (Model R4090). We decided that "The Beast" is an appropriate nickname for this monster saw that should offer tile professionals everything they could want in a high-capacity cutting machine. It features a variable-speed motor to adjust cutting speed for the material, such as glass and porcelain. It offers the largest cut capacity of any tile saw currently on the market (34-in. rip; 24-in. diagonal; 3-3/4-in. depth). The multi-position cutting head tracks left and right along a guide arm, expanding cut capacity and ensuring the best position for the table to support the tile. The sliding table expands along two guide bars



to support the largest of tiles. The cutting head can be adjusted to any angle between 0 and 45 degrees. A removable table extension provides work support for straight cuts in tiles up to 34 in. (in front position) and diagonal cuts for tiles up to 24 in. (in rear position). The whole system rests on Ridgid's Wet Saw Utility Vehicle (WS-UV), which is an integrated mobile work stand that collapses

with single-point release for easy portability on 8-in. semi-pneumatic wheels, and then sets up in seconds as a sturdy working platform. Not only did The Beast slice through tile after tile without a hitch, but we used it to cut natural stone up to 3 in. thick. With its remarkable work capacity, multiple features and exceptional quality of cut, and the *EHT* staff looks forward to using "The Beast" on many tile projects to come. Visit www.ridgid.com/thebeast.

LIQUID NAILS FUZE-IT ADHESIVE

The new Fuze-It product from Liquid Nails is a resealable, multi-surface, all-weather adhesive that comes in a compact squeeze tube, which means you can keep it in your toolbox without having to lug around a caulk-gun for those on-the-fly glue applications. Compatible surfaces include wood, paneling, drywall, ceramic tile, fiberglass, marble, granite and more. The adhesive cures regardless of surface porosity or condition, will not harden or shrink and is VOC compliant. The high-strength solution is waterproof and can withstand a temperature range from -60° to 300° F. Fuze-It comes in a pocket-sized, 5.5-oz. tube that can cover up to 17 linear feet. Visit www.liquidnails.com.



New for 2012—
Simply unroll the
beauty of granite



IMAGE

- ◆ Same tough solid-vinyl floor material as traditional G-Floor flooring
- ◆ Easy roll-out installation and maintenance
- ◆ Available in 9 popular granite colors
- ◆ Two surface patterns—tread and ceramic
- ◆ Protects floors from nearly all common garage floor chemicals

BLT
BETTER LIFE TECHNOLOGY, LLC

www.gfloorgraphic.com
info@gfloorgraphic.com
877-810-6444 ext 321



HOT PRODUCTS

SAVAGE JAB SAW/UTILITY KNIFE

The Savage Folding Jab Saw/Utility Knife from Swanson Tools simplifies life on the job site. Built with the accuracy and durability, this combination tool comes with three saw blades (for cutting dry-wall, PVC, metal and wood), one razor blade and soft carrying pouch that clips to a belt. It features two cutting positions and works with any reciprocating saw blade. Visit www.savageunleashed.com.



W1833 POCKET HOLE MACHINE

For the serious woodworker who makes a lot of pocket holes, Woodstock International offers a new woodworking machine that allows you to make face frames, casework, drawers and more without stopping between operations. This high-production machine features a 1/2-HP, 120V, universal motor that drives 6-in. long bits at 2,500 RPM. The patented "No Adjust" hold-down clamp saves time by eliminating the need to adjust for workpiece thickness. Simply insert any workpiece from 1/2- to 1-1/2-in. thick and pull the handle to drill a pocket hole. Covered by a 2-year warranty, the Model W1833 Pocket Hole Machine features HDPE hold-down and swing stops, and a two-piece extruded aluminum fence. Visit www.woodstockinternational.com.

DELTA BENCH GRINDERS

Delta Power Equipment Corporation's two new bench grinders, an 8-in. Model 23-199, and a 6-in., Model 23-198, make quick work of all grinding, sharpening, polishing and buffing operations. Both Delta bench grinders feature a patented new tool-less, quick-change nut and tool-less wheel cover that make changing wheels fast and easy. They also feature variable speeds with an upfront speed dial allowing for easy control of speeds from 2,000 RPM to 3,400 RPM, which offers an excellent level of control no matter what material the user is working with. Both models feature a cast iron base for durability and reduced vibration and come with four rubber feet to help prevent movement. The full-size clear safety shields have thumb screws for easy adjustment. Visit www.DeltaMachinery.com.



REACH FOR MORE



SEE MORE. LEARN MORE. DO MORE.

Join us in Charlotte for five days packed with exhibits, hands-on workshops and seminars on decorative concrete design, innovation, techniques and applications. You'll be inspired!

GET INSPIRED – JOIN US IN CHARLOTTE
 March 11-15, 2013 at the
 Charlotte Convention Center.
 Register today and save!

ASSOCIATION
PARTNER



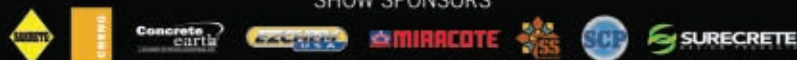
OFFICIAL
COLOR SPONSOR



CEMENT
SPONSOR



SHOW SPONSORS



CHARLOTTE 2013

Training: March 11-15

Exhibits: March 13-15

ConcreteDecorShow.com

(877) 935-8906



Where Decorative Concrete
Means Business.

HOT PRODUCTS

SMART-BIT FOR FIBER CEMENT BOARD

Starborn Industries has introduced the new Smart-Bit for Fiber Cement Board. This tungsten-carbide tipped predrilling and countersinking tool is designed to create a perfect hole and fit for matching fasteners, while ensuring consistently superior finishes. Fiber cement board products are used in a wide variety of construction applications. The Smart-Bit for Fiber Cement is the first tool that makes it possible to pre-drill and countersink in one step at a consistent depth, without damaging the work surface. The Smart-Bit features a free-spinning stop collar, which controls the depth of the drill and countersink. The stop collar is fitted with a rubber O-ring to prevent surface damage or marking. Once the stop collar stops spinning, the hole is complete. Additionally, the tool keeps debris away from the stop collar with its built-in debris cavity, which allows for the tool to maintain a perfect and consistent depth compared to conventional flush-mounted countersinks. The Smart-Bit for Fiber Cement Board is designed for use with #10 gauge flat-head screws, and comes packaged with two different length drill bits for use with either 5/16- or 5/8-in. thick compressed fiber cement boards. Visit www.starbornindustries.com.



“THE ORIGINAL” PROFESSIONAL CAST ALUMINUM LEVEL WITH CASE

Sands Level & Tool Co., Inc. originated the aluminum type level to offer a lightweight quality level for the market back in 1895. Sands continues that tradition of quality with its durable cast aluminum level. This level is precision-milled for an accurate work surface and has solidly set “Cat’s Eye” yellow double-bent vials for accuracy. This level will not warp or rust and can handle any work environment. The level also includes a durable high-impact styrene level case with a hinged lid. Visit www.KraftTool.com



NON-PENETRATING LCD MOISTURE METER FROM GENERAL

The new Non-Penetrating LCD Moisture Meter with Tricolor Bar Graph (MMD7NP) from General Tools & Instruments offers professionals, DIY’ers and hobbyists a powerful instrument at a best-in-class value. When compared with similar moisture meters on the market, the MMD7NP is far more affordable than nearly all of its competitors and, unlike its closest price competitor, the unit features a backlit display and delivers a wider measurement range, deeper measurement depth and finer material definition. The MMD7NP is ideal for measuring the moisture content of wood, and even differentiates between hardwood and softwood. This is helpful for selecting dry timber at the lumberyard as well as checking the moisture level of wood in the workshop or in the field. The MMD7NP can also be used for measuring the moisture content of drywall, masonry or concrete; detecting moisture below the surface of carpets and subflooring; and locating water leaks above ceilings, below floors or behind walls. It has a maximum sensing depth of 3/4-in. As a pinless model, the instrument acquires readings via a non-invasive method, which means it will not mar wood or other materials. Visit www.generaltools.com.



Amerimax	95	Oneida Air Systems	86
Arke	17	Proflex	13
Armorcore	39	Ready Seal	10
Armstrong Clark	15	Red Dragon Torch	44
Attach-A-Deck	52	Red Hill	30
Bessey	68	RoboReel	9
Better Life Technology	72, 73, 103	Sakrete	108
Bigfoot Systems	57	Sashco	53
Bristol Valley Hardwoods	50	Schlage	21
Can Gun	30	Seal It Green	54, 55
Cepco Tool Company	51	Shelves That Slide	40
Checkpoint Levels	20	ShopBot	29
Concrete Decor Show	105	Sky Lift	60
Connecticut Screen Works	91	Specification Chemicals	107
DaVinci	89	Spring Bolt	6
Decks Unlimited	50	Stainhandler	28
DeckWise	58	Standard Paints	12
Dex Systems	IBC	Starrett	25
Dix Systems	99	T-Jak	82
Drill Doctor	18	TG Tools	2, 3, 93
Duckback	63	The New England Slate Company	91
Dustless Technologies	78	Thurmalox	6
Earthway	16	TimberTech	59
Elastilon USA	81	Tjernlund Products	82
Ergo Trading	42	Tools 4 Flooring	80
Everflashing	71	Touch 'n Foam	5
Franmar	97	Trail Vac	20
FrogTape	45	Ty-Lan Enterprises	56
Galaxie	38	UGL	41
General Tools	IFC, 1	Viance	101
Goddard Manufacturing Company	79	Warmboard	83
Gorilla Glue Company	61	Western Red Cedar	67
Great Railing	62	Wolmanized Wood	37
GRK Fasteners	7	Woodworker's Hardware	32
Guhdo	87		
Heatizon Systems	84, 85		
Hi-Velocity Systems	27		
Hobart Welding Products	43		
Humboldt Redwood	69		
Hyde	11		
Ingram's Water & Air Equipment	33		
Johnson Level	19		
Kraft Tool	22		
Lagesse Products	24		
Lumber Liquidators	4		
Magnum Heat	31		
Maine Deck Bracket	49		
Maze Nails	23		
MP Global Products	77, BC		
NyloDeck	65		

NU-WAL®
RESTORATION SYSTEM

Make Walls and Ceilings Like New!

RESTORE CRACKED WALLS

- Cost effective
- One day application
- Remove no trim

SPECIFICATION CHEMICALS, INC.
www.nu-wal.com
800-247-3932



Create something *concrete.*

The Pro's Choice since 1936



Visit us at the World of Concrete at Booth #S10639

1.866.SAKRETE ♦ SAKRETE.COM

Sakrete® is a registered trademark of



Oldcastle®

Your New Stone or Tile Deck in 3 Simple Steps



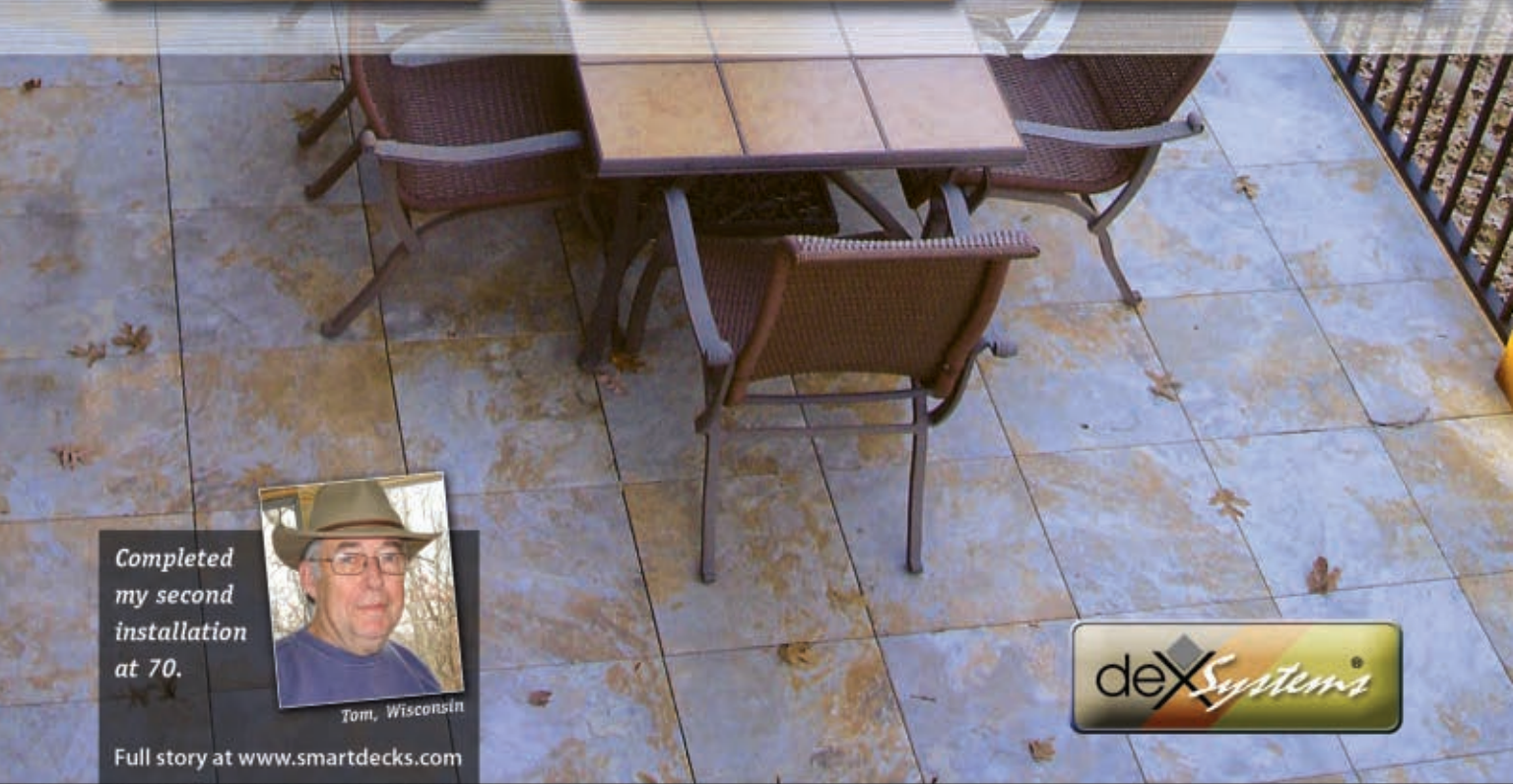
1 Your Joist Framing
24" or 16" O.C.



2 Our Structural Floor
and Fasteners



3 Your Tile or Stone
With Our Adhesive



Completed
my second
installation
at 70.



Tom, Wisconsin

Full story at www.smartdecks.com



Now Relax On Your Maintenance Free Terrace

GRATEDEX.COM
GRATE dex[®]

PIERDEX.COM
PIER dex[®]

Outdoor Floor System[™]

www.outdoorfloorsystem.com

888-883-4098

Safe Heat

for Laminate, Engineered Wood, or Tile Floors!



Heat your
FLOOR
for
PENNIES
a day!

Quiet Warmth®

- Floating radiant heat panels ideally suited for floating laminate, and wood flooring
- Can also be used with other hard surface flooring like tile and glue-down wood
- Much easier to install than most other systems, no need to bury components in thick concrete
- The perfect compliment to SnapStone or Avaire Tile Systems



global products L.L.C.

Your **SUSTAINABLE** Underlayment Specialists



BOOTH #B3363

888.379.9695 | quietwalk.com