

Remodel with Prefinished Stair Treads

Extreme How-To[®]

The Enthusiast's Guide to Home Improvement

HOT PRODUCTS FOR THE
**GARAGE &
WORKSHOP**

PLUS:

SNAP-TOGETHER
GARAGE FLOOR TILE

WATERPROOFING
BASEMENT WALLS



www.MyTGTools.com

YOUR ONE SOURCE SOLUTION

FASTER EASIER CLEANER

KIK® Forstner Bit

KIK® HS Brad Point

KIK® Spade Bit

**135° Split Point start from Contact
3-flat shank, less chuck slippage**

Concrete

High Speed

Titanium
Coated
High Speed

Heavy Duty

Solid Cobalt

S&D

Stronger, Faster
Less Walking

General Purpose

Longer Lasting

Heavy Duty
Steel Usage

Heavy Duty
Steel Usage

Special Use Heavy
Duty Steel Usage

www.MyTGTools.com/kik1.php 1-800-687-4122

TG® Tools • 1010 Cedar Ave. • St. Charles, IL 60174 • ph 800-687-4122 • fax 630-584-4722

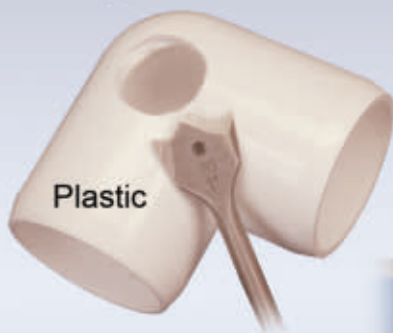
We Put a **KIK**® in Your Boring Tasks!



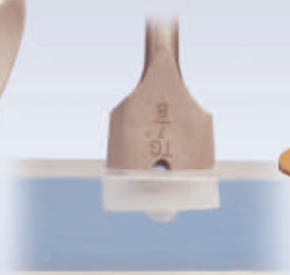
6 Cutting Edges



The revolutionary **KIK**® Spade Bit has over 30% more cutting surface making them much faster and longer lasting than standard spade bits. There is no protruding tang to bend or break allowing these bits to even bore non-ferrous sheet metals and curved holes too! Tested and Proven Superior by an Independent Lab.



Plastic



Acrylic



Brass

6 Cutting Edges



KIK® HS Brad Point

Independent Lab Tested and Proven
Designed for Drilling Sheet Metal, Wood and Plastic Faster, Cleaner with Longer Life and no Walking on the Surface.

In Wood:

- **Approximately 100% Faster** Compared to Common Brad Point
- **40% Faster** Compared to Standard Drill Bits

In Sheet Metal:

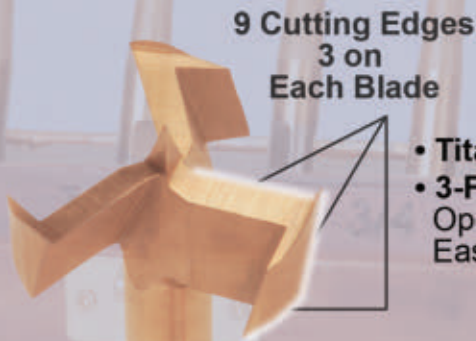
- **50% Cleaner** Entry
- Consistently **Round Hole**
- **20% Less Walking**

In Acrylic:

- **No cracking** Drilling Acrylic
- **150% Faster** Compared to Standard Drills
- **690% Faster** Than Other Brad Points

KIK® Forstner Bit

Proven Superior by an Independent Lab
Cleaner Entry and Exit



9 Cutting Edges
3 on Each Blade

- **Titanium Coated**
- **3-Flat Shank**
Open Head Design for no Clogging
Easy Drilling and Direction Control

- **Bores through Hard Woods 100% Faster** Compared to Standard Forstners

- **Bores**
- **Mills**
- **Routes**
- **Cuts**
- **Bores Curved Paths**
- **Channels**

- **Bores Through Acrylics Cleanly Without Melting**
Able to Bore 90 Degree Curved Paths

www.MyTGTools.com/kik1.php **1-800-687-4122**

TG® Tools • 1010 Cedar Ave. • St. Charles, IL 60174 • ph 800-687-4122 • fax 630-584-4722

Face it!



This is *the* cutting-edge Face Frame Jig System

Clamp, drill and fasten in one simple set-up!

This easy-to-use system increases productivity by simplifying fabrication of face frames, cabinet doors and other woodworking assemblies. In one simple operation, you can align, securely clamp, bore pocket holes and screw components together.

Now available through Woodcraft Supply:
woodcraft.com/generaltools



Specialty Tools & Instruments

Precision, Specialty & Innovation...since 1922



General Tools & Instruments



GeneralToolsNYC

General Tools & Instruments 80 White Street, New York, NY 10013 | tel 800-697-8665 | www.generaltools.com

Check out General's full line of woodworking jigs



Crown King Crown Molding Jig

helps you make seamless, perfectly mitered interior and exterior corner joints.

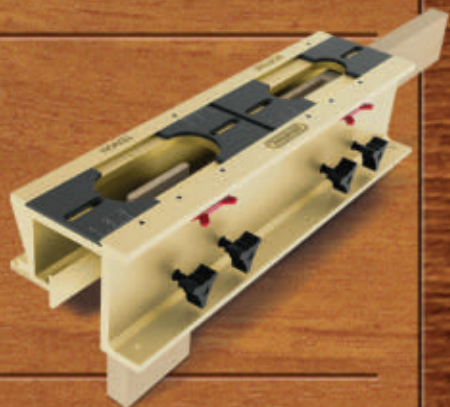
#880



The E•Z Pro™ Mortise & Tenon Jig

lets you make perfectly matched mortise & tenon joints with one jig.

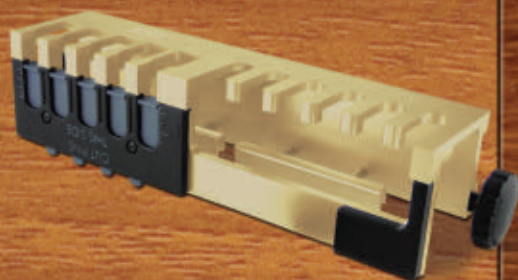
#870



The E•Z Pro™ Dovetail Jig

lets you make dovetail and box joints – through or half-blind.

#861



The E•Z Pro™ Pocket Hole Jig

has everything you need to make flush, corner and angle pocket hole joints.

#850



The E•Z Pro™ Doweling Jig

lets you make perfectly aligned dowel joints every time.

#851



CONTENTS

Fall 2014



FEATURES

20 Garage & Workshop Hot Products

Equip your Project Headquarters

32 Remodel with Prefinished Stair Treads

New Treads in No Time—Here's How to Do It

40 Break on Through to the Other Side

Knock Through a Wall to Build an
Awesome Bar Pass-through

DEPARTMENTS

6 Q & A

10 Do-It-Yourself

Waterproofing Basement Walls

16 Spotlight

Snap-Together Garage Floor Tile

52 Quick Fix

Fix Common Garage Door Opener Problems

56 Everything Auto

Do-It-Yourself Shock/Strut Install



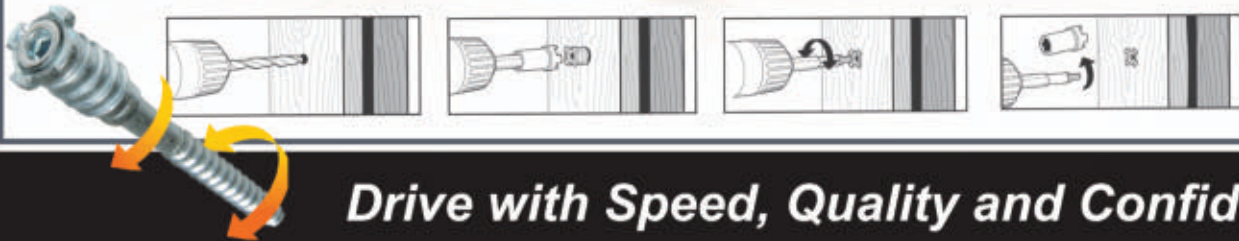
TOP STAR™ DOOR & WINDOW SHIM SCREWS

For Plumb Installations of Doors & Windows. No More Shims.



Complete TOP STAR™ System Includes:
Bit, Crown and Threaded Screw.

ÜberGrade™



Drive with Speed, Quality and Confidence

The inner screw turns independently of the outer screw for easy adjustment--without shims!

FAST & EASY- The patented "shim free" design allows for quick and plumb installation of interior/exterior wooden doors and windows. The unique screw design replaces the traditional use of shims and nails with a screw system that allows you to adjust wooden jambs until they are plumb.

QUALITY INSTALLATIONS- fine Top Star™ Shim screws allow for fine adjustments in both directions, helping to ensure professional finish - no shimming, no hassles.

PREMIUM PERFORMANCE- Once installed, the screw can be hidden by the door-stop. As an added function, after the door has been used for years, opening, closing and slamming the doors can take a toll on a door, even with shims causing the door to go out of plumb. If installed with the Top Star™ Shim Screw, all one has to do is adjust the screw back to its plumb position.

GRK
FASTENERS™
ÜberGrade



800.263.0463



WWW.GRKFASTENERS.COM

Visit our web site for your
FREE SAMPLE of Top Star™
Shim Screws.

Q&A Got a?

Questions About Home Building, Remodeling? Have Your Own How-To Tip? Visit our blog at blog.extremehowto.com and click on Ask Our Experts.

Q. We dropped a piece of furniture on a sheet vinyl floor and caused a large tear. I have some leftover flooring that matches. What's the best method to apply the patch?

A. It sounds like you'll need to perform a surgical removal and replacement of the damaged area of flooring. Use a straight edge and a utility knife to cut out a square section of the flooring that surrounds the damage.

If you have faux grout lines in the pattern of the floor, then hide your cuts in the lines. Peel up the damaged flooring and use a paint scraper to remove the old backing and adhesive. A hair dryer will help soften the adhesive. With your leftover vinyl flooring, cut a replacement piece that exactly matches the removed section. (Use the old piece as a template.) Test-fit the patch. Then, spread flooring adhesive on the subfloor using a notched trowel. Set the patch in place and roll out any air bubbles. After the adhesive sets, carefully apply a vinyl seam sealant to the edges.

THE BEST PORTABLE TOOL STORAGE AVAILABLE



Water Resistant

Lockable

Rolls Anywhere

Stop Lifting and Start Rolling!

- High volume tool storage and transport
- Takes the work out of carrying tools and parts
- Double wall polyethylene durability
- Store - Lock - & Roll tools and supplies to the job **IN ONE TRIP!**



1-800-KADDIES (523-3437)

WWW.KADDIES.COM

Q. I have a plywood subfloor with a few high/low spots. I've read that laminate flooring can only be installed over flat subfloors. Is there any way I can flatten it?

A. High areas, such as peaked joints in the subfloor or other ridges in the wood subfloor can be power-sanded or planed. Low areas that are less than 1/4-inch deep can often be filled with building paper. Any area where the surface dips lower than that should be filled with a Portland cement and latex-based leveling compound, or covered with some sort of rigid underlayment. When using a leveling compound, be sure to follow the manufacturer's recommendations, and allow the compound to dry completely before installing the laminate flooring.

We think outside of the...



...ordinary! Wooster engineers take a fresh approach to designing paintbrushes and rollers. We are the company that others copy. Our products achieve something useful, something more: faster production, smoother finish, easier control, and improved performance. If you want painting equipment that goes beyond expectations, look for what's new from Wooster.

WOOSTER

The Wooster Brush Company • 800-392-7246 • www.woosterbrush.com

Q. I'm about to wallpaper a bedroom but dread the mess of soaking the pre-pasted paper. Is there any way around this?

A. The soaking process of pre-pasted wallpaper can be pretty messy. Some manufacturers, such as Sherwin-Williams, offer a paste activator. The paste activator is brushed onto the back of the wallpaper

just like paste. Once applied, "book" the segment of paper and set to one side so that the paste can become completely activated prior to hanging. Booking the paper means to fold the paper so the back surface touches against itself. Let it sit for five or 10 minutes to allow the paper to expand, which helps prevent bubbles from forming beneath the paper.

Q. I need to cut a piece of cement board into a 30-inch circle. What's the best way to cut this material?

A. You can cut cement backer board with a circular saw or grinder equipped with an abrasive or diamond blade. A reciprocating saw with an abrasive blade will also do the trick, and so will a backerboard scoring knife, which works like a standard razor knife but with a carbide cutting edge. But for circular cuts, a jig-saw equipped with a carbide blade will probably give you the best control of the cut. The carbide blade has no teeth. Instead, it has a rough coating of tungsten carbide, which is extremely hard. Cutting cement board with a power tool is always dusty, so be sure to wear a dust mask and eye protection. **EHT**



UCBs

BLOKKZ

Made in the USA

Universal Clamping Blocks (UCBs)

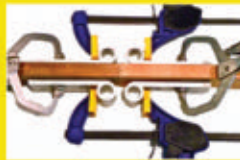
(The Ultimate Clamping Tool)



Clamping Odd Angles



Rabbit Joint



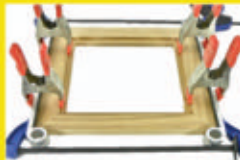
Finger Joint



Butt Joint



Edge Banding



Frame



Stainless Steel Splice



Stainless Steel Wide Angle



Hold-Down (With Accessory Kit)



Woodworker's Centering Punch

("The SQUID")



Sphere



2" Dowel



On Edge



Rectangular End



2-2/8" Square

Blokkz, 2745 E. Diana Ave., Anaheim, CA, 92806,

www.Blokkz.com

Turn Your Garage Into A Pest-Free Airy Space in Seconds!



Lifestyle 
SCREENS
THE MOST VERSATILE GARAGE SCREEN ON THE PLANET

Works With Your Existing Garage Door!

Lifestyle Screens helps you turn your garage into a pest-free space in seconds. The Lifestyle Screen is a fully retractable screen for your garage that works with your existing garage door. Available in a variety of frame colors and screen mesh options, the Lifestyle Screen will give you years of enjoyment!



www.LifestyleScreens.com

Waterproofing Basement Walls

Use a masonry waterproofer to conceal stains and prevent water intrusion.



By Matt Weber

Nobody likes unsightly stains from mold, mildew or water damage, but that's what occurs in countless basements across the nation. Basements have a tendency to be damp by simple virtue of being the lowest level of the house, often below grade. The basement walls are the barrier between your living space and the gallons and gallons of accumulated water that your home sheds during rainfall.

However, roof runoff is usually not the only contributing factor to the massive amount of water collecting at a home's foundation

walls. Basement waterproofing should begin outside your home. Whenever you discover wetness on interior masonry walls, observe what is causing the seepage problem. Check for leaky gutters and downspouts or blocked drainage pipes. Ruts in the landscape or improper grading can also direct water towards your foundation. As the soil around your foundation becomes saturated, hydrostatic pressure forces water through the porous masonry, creating dark stains on the interior surface. For the best waterproofing results, correct all of these exterior problems



By installing a gutter and downspouts, water on the outside is diverted away from the basement walls.

before applying a masonry waterproofer to the interior block.

For example, the house shown in this article had no gutter along its rear roof line. As a result, during a rainstorm the water was cascading off the roof and pounding a trench along the foundation wall, where it was seeping through the ground and migrating through the cinderblock, as evidenced by stains on the interior. By installing a gutter and a couple of downspouts, the water is channeled away from that troublesome trench and diverted across the yard and away from the house walls. The gutter system will



Get rid of ugly stains.

Mowing

GET WORK DONE.



There is no comparison between a Zero Turn Mower and any other powered mower when it comes to getting work done quick and efficiently. A Land Pride Zero Turn Mower can cut square corners, zip around trees, and increase overall productivity on your farm, in your yard or at your business.

Get mowing work done... with Land Pride's Zero Turn Mowers!

Over 280 Products to Fit Your Lifestyle...



A Division of
Great Plains Mfg., Inc.
Salina, Kansas
www.landpride.com



Lp CONSISTENTLY LEADING THE WAY...

address much of the water intrusion on the outside, and the application of a masonry waterproofer to the interior walls will prevent future stains from occurring. Together, both the exterior and interior approaches will ensure a clean, bone-dry basement for years to come.

PREP THE SURFACE

Applying a masonry waterproofing product is basically a painting project, so begin with prepping the surface of the wall for the best adhesion. Clean the block thoroughly with a wire brush to remove all loose and broken mortar, dirt and dust. This particular house had many dirt spots caused by dirt daubers—a type of wasp that builds dirt nests on virtually any flat surface it can grab. Another obstacle to any masonry waterproofer is efflorescence (salt deposits). This white, powdery



Scrub away any loose debris and fill cracks and holes with concrete patch.



substance is formed when water-soluble salt compounds in the masonry are drawn to the surface by water seepage. These deposits prevent the waterproofing product from adhering to the surface of the wall. To control this problem, wash with a solution of muriatic acid, according to the manufacturer's directions. Remove old paint by wire-brushing, sand-blasting or scraping (beware of lead paint). Most masonry waterproofers are warranted when applied over bare masonry only.

As mentioned earlier, the foundation walls of this house also required the removal of mold and mildew stains. Bleach is a well-known killer of mold and bacteria, so I used a solution of bleach and water to scrub away the stains. When all of the mold and other debris is removed, dry the area completely.

Next, use a hammer and cold chisel to chip off any unsightly excess mortar protruding from the joints. If necessary, use a trowel to fill any shallow spots or holes with mortar. Small cracks can be patched with a concrete repair product and troweled smooth.

Also, inspect the floor-to-wall joint for evidence of seepage. When concrete floors cure, they normally shrink and pull away from the wall, creating a gap where water can enter. If this is the case, fill all gaps between the floor and walls with a concrete patching product.

Allow all repairs to dry completely before painting. Then, clear the room of all obstacles and mask off everything you don't want painted. Sheets of cardboard work well to cover the floor during painting. Also, wear clothing that you're willing to sacrifice after painting. The solid material in the waterproofer has a tendency to fly off a paint roller and splatter all over the user.

APPLYING THE WATERPROOFER

Several manufacturers offer masonry waterproofing products, including Ames, Behr, Quikrete, and UGL. For this project we used UGL's latex-based Drylok product in white. Drylok is also available in gray, beige or blue. The product works by penetrating the tiny pores in the masonry surface and bonds itself to act as an integral barrier to stop water seepage. Ordinary paint only adheres to the surface, and oncoming water pressure can force it off. However, the high solids content in the waterproofer actually plugs those tiny pathways with a heavy coating that can withstand hydrostatic pressure of 10 psi—that's the equivalent to water pressure at a



Roll on the masonry waterproofer in 3' sections and then back-brush it into the block.





A thick-bodied product like Drylok fills the porous masonry surface to prevent seepage.



depth of 22 feet (1,440 pounds per square foot). And, hopefully, the walls of your house will never be 22 feet under water.

According to the manufacturer's instructions, one should "apply the first coat with a stiff bristle brush working thoroughly into the pores of the masonry surface." I'm sure that works but I was in a hurry.

I opted to roll on the first coat using a roller sleeve with a very thick pile. Roll on the product slowly to minimize splatter. Even when rolling slowly, a roller achieves quicker coverage than brush-applying the entire wall. I worked in 3-foot sections, and then back-brushed the water-proofer with a paint brush to push the product deep into the surface of the block. Proceed in this pattern, rolling then brushing section by section, until you've completed the first coat over all the basement walls.

Bear in mind that masonry waterproofer is a very thick-bodied paint and is not intended to be spread thin like regular wall paint. One gallon will cover 75 to 100 square feet. Plus, two coats are required to ensure adequate waterproofing and to qualify for

the Drylok's 10-year product warranty. Allow the first coat to dry completely before rolling on the second and final coat.

FINISHING UP

Once completely cured, the masonry waterproofer will keep water and mildew at bay, and protect all the items stored in the basement. To minimize dust and any slight amount of moisture at the floor level, we installed a snap-together floor system called Diamondtrax from the Swisstrax company (www.swisstrax.com). We laid a checkerboard pattern with alternating colors of light gray and slate gray. The snap-together floor provides a durable, low-maintenance, slip-resistant



NEW!



The only wood filler that tells you when it's ready.



Elmer's Carpenter's Color Change Wood Filler takes the guesswork out of finishing wood projects.

It goes on purple and dries white, so you'll know exactly when your filler is ready to sand and paint. Or choose the formula that dries to a natural wood tone for staining.

THE #1 WOOD FILLER BRAND*

FIND IT AT A HARDWARE RETAILER NEAR YOU.

*Based on 2011/2012 U.S. Sales Data

DO IT YOURSELF

floor that provides a softer, more back-friendly walking surface than hard slab concrete. Plus, installation couldn't be simpler. To install the flooring, simply place the tiles side by side, interlocking the pegs under one tile with the loops on the edge of the other. We then installed a decorative edging strip where the flooring met the garage door.

In the end, the basement was transformed into a nice, clean area that serves as a laundry room and storage area, including a wall-mounted cabinet and a few storage racks for brooms and mops. It was a marked improvement over the damp, drab concrete cave it used to be. **EHT**



MASONRY WATERPROOFER RESOURCES

Ames Research
Laboratories
www.amesresearch.com

Behr
www.behr.com

Quikrete
www.quikrete.com

UGL
www.drylok.com

Garage Overhead Storage Racks



- Fits Any Garage
- Friendly Service
- Lifetime Warranty
- Do-It-Yourself Kits



**Fall
Special!**
25% Off

Online Orders Only

Limited One Use Per Customer
Expires: 2/28/15 Code:EXT1114HTMG

877-257-1537
Scan to Visit SafeRacks.com



SafeRacks is Installed by Licensed and Insured Contractors. Accept no Substitutes, Make Sure it's the Real Thing. U.S. Patents D553,401 / 7,357,262 / D697,785

DEALER INQUIRIES WELCOME

Give your wood a **MAKEOVER**



Amber Stain on teak and PT pine

Photo courtesy of Beth and Rod of See Dirt Run!

Professional grade yet homeowner friendly

ARMSTRONG'S WOOD STAINS

Long Lasting, Easy to Apply and a Breeze to Maintain

Manufacturers of VOC-Compliant, Oil-Based Wood Finishes

www.armclark.com • (800) 916-8211

PLEASE VISIT THE WEB'S PREMIERE SITES FOR OUTDOOR WOOD RESTORATION TOPICS AND DISCUSSIONS,
www.thegrimescene.com/forums www.thewoodpros.com

Lookin' Snappy

Snap-Together Garage Floor Tile is Quick and Easy to Install.



By Matt Weber

It's simple to install an interlocking floor tile system for a sweet garage floor, workshop, basement, patio and more. These highly durable floor systems, such as the Swisstrax brand pictured here, provide a highly non-slip and extremely attractive garage flooring that will look great for years to come. These systems add some much needed décor to a lifeless concrete slab floor, provide safe traction and are easy to clean. Interlocking garage floor is available in a wide array of colors and textures from a number of online suppliers. The style shown here is the Swisstrax Diamondtrax pattern in a checkerboard layout with

alternating gray and silver tiles.

These heavy-duty polypropylene tiles each have five interlocking tabs where the edges join the other tiles. The floor system is quick to install and creates an attractive, non-slip, solid surface with a 12-year warranty—and it's guaranteed not to stain.

To install the garage floor, clear away all obstructions and sweep the floor thoroughly. Use 1/4-inch spacing boards at the perimeter of the walls and obstacles such as beams to allow for expansion. After the tiles have been conditioned to room temperature, start in a corner and place the "smooth" edges toward the wall.

Place the next tile against the locking edge, interlocking the pegs under the second tile with the loops on the edge of the first. Continue working in one direction until the first row is complete.

If you only have room for a partial tile at the end of the first row, you may opt to center that row between opposite walls, and cut two matching partial tiles to bookend the row for a more symmetrical appearance. Cuts can be made with a standard circular saw, jigsaw or table saw. Then complete two more rows so you have the first three installed with enough weight and traction to hold the layout in place.

arke[®]
fontanot

SPIRAL STAIRS AND MODULAR STAIR CASE KITS

AVAILABLE THROUGHOUT THE USA, ARKE SPIRAL AND MODULAR STAIRCASE KITS CAN BE BUILT IN A DAY BY THE AVERAGE DO-IT-YOURSELF HOME ENTHUSIAST.

The OAK 70.XTRA ▶

The Oak 70.XTRA is an adjustable premier series spiral staircase that features solid Oak wooden stair treads and landing to complement and add style to any interior living space. Surrounding the full length of the staircase, the horizontal balusters and railing design is visually unique when compared to the traditional vertical baluster design of most stairs. The staircase can be easily installed by the homeowner in a single day using common household tools. The Oak 70.XTRA is available in 2 diameter sizes and is available in 2 choices of color...Hi-Gloss Black and Hi-Gloss White.

- Standard kit includes 12 oak wood stair treads, a landing, a complete handrail, and all necessary hardware and connectors.
- Diameters available include a 5 ft. 3 in. model and a 4 ft. 3 in. model.
- The height range for the standard kit is adjustable from 8 ft. 3 in. to 10 ft. 2 7/8 in. and with additional components, can be installed to a maximum height of 11 ft. 9 5/16 in.
- Powder coat finished painted in either Hi-Gloss Black or Hi-Gloss White.
- Can be installed in a clockwise or counterclockwise rotation.
- Stair treads and landing are made of solid Oak wood with a natural stain and a polyurethane protective coating.
- Balcony rail kits are available in matching color and horizontal baluster and railing design.
- Handrail is manufactured from an aluminum core surrounded by a soft PVC cover to allow the handrail to be curved at the time of installation to accommodate the radius of the staircase.
- Rise between stair treads is adjustable from 8 3/8 in. to 9 1/4 in.
- Interior installation only.
- A complete installation guide is included in all kits and an installation video is available upon request.
- Homeowner should consult with local building department concerning building codes prior to purchase.



arke[®]
fontanot

www.arkestairs.com



Use 1/4" spacer boards against the walls to create an expansion gap.



Tiles can be cut with a table saw, circular saw or jigsaw.



For a symmetrical layout, center the first row and cut partial tiles for each end.

Next, install the next three rows along the wall adjacent to the first three, working toward the door of the garage. Install the interlocking beveled edging along the end of the three rows, making sure the garage door can close clear of the edging and tile. Then continue working throughout the floor, completing the field by snapping it in place tile by tile. The interlocking edges keep everything square and uniform for a great-looking finished project. **EHT**



Install rows 4 through 6 along the adjacent wall toward the garage door.

Install beveled edging at the end of the floor, staying clear of the garage door.



The tiles snap together easily along the edges.





**What drives
your business?**

Do more of that.

Compromise is not an option.

Today's homeowners want low-maintenance living and high-performance decking. That's why so many contractors rely on TimberTech: for the highest-quality materials, unrivaled design options and a 25-year warranty that proves we have your back. Your reputation rides on every deck - ours, too. See the line at timbertech.com.

 **TimberTech**[®]
Less Work. More Life.

DECKING | RAILING | LIGHTING | FASTENING





GARAGE & WORKSHOP

HOT PRODUCTS

Some DIY'ers use a shed or outbuilding, others use a basement or garage. No matter where your work is headquartered, it becomes a "workshop" for projects of all shapes and sizes. Here's a handful of new products to outfit your work space of choice.

GARAGE & WORKSHOP

HOT PRODUCTS



SEAL-KRETE GARAGE FLOOR EPOXY PAINT

Give your garage a showroom finish with Seal-Krete epoxy paint. Painting your garage floor with epoxy paint can provide a tough, durable finish that protects it from oil, gas, antifreeze and salt, and keeps your garage looking great. As with any painting job, surface preparation is key to a long-lasting finish, so take your time and follow the manufacturer's instructions carefully, such as allowing appropriate dry time between product applications. Once you have your floor completely clean and etched, you can apply a concrete bonding primer. Primer is recommended in order to get maximum adhesion from your paint. Epoxy paint is easy to apply with a brush (for cutting-in along walls) and a roller. Most one-part epoxies recommend two coats to get the best looking and longest lasting floor. For

additional protection, you may decide to seal your epoxy floor with a clear sealer. Add a non-slip additive when applying sealer to provide a slip-resistant finish to your topcoat. Seal-Krete has a full line of products for your garage floor. Visit www.seal-krete.com.

DELTA 5000 SERIES TABLE SAWS

If you're a serious woodworker who's lucky enough to have the available space, Delta Power Equipment Corporation has launched what it hails as "the most advanced 10-inch table saw available today." The company's new 5000 Series saws are equipped with a smooth-running, 15-amp totally enclosed fan cooled induction motor for quiet, high-efficient power. Dual voltage (120/240V) capability provides power and efficiency in your shop or on the job site. The large Biesemeyer-style T-square rip fence locks and unlocks with one hand and glides easily over the robust one-piece rail system, providing precision cuts every time. The heavy-duty cast iron main table features extension-wing options and an extension table with support legs—yet thanks to one swivel wheel, two fixed wheels and a one-touch pedal lock/release, it is easy to move around the shop or garage. Visit www.deltamachinery.com.





STARRETT PRECISION PUNCHES

For over 130 years of precision toolmaking, the L. S. Starrett Company has taken Thomas Carlyle's words to heart: "Man is a tool-using animal ... Without tools he is nothing, with tools he is all." There are no tools throughout history more suited to this quote than steel punches, and no tool Starrett takes as much pride in making. The basic definition of a punch is a hard metal rod with a shaped tip at one end and a blunt butt end at the other, which is usually struck by a hammer. As Starrett describes them: Punches are well proportioned, hardened, properly tempered, nicely finished, and have a knurled finger grip. Even Old Tom would agree that having a quality made tool can make all the difference. Visit www.starrett.com.

FYPON GARAGE DOOR DÉCOR

To add pizzazz to the exterior of your garage door, the experts at

Fypon recommend you install decorative urethane trim pieces, such as mouldings, crossheads, pediments and keystones to the garage door surround. The first

basic element is to surround the entire garage door entry with weather-resistant urethane moulding or PVC trim. The pieces are easy to cut and install, plus they resist insect infestations, warping, splitting and humidity. Urethane products come with a pre-primed surface that is ready to paint or stain, so no sanding or additional priming is needed before installation. PVC trim pieces do not need to be painted. As an option to moulding and trim, more detailed pilasters, which stand vertically to frame out an entry door, add dimension and beauty to the sides of the garage entryway. After installing these, you can look at the top of the garage entrance. Crosshead trim comes in lengths up to 207 inches to accommodate large garage openings. Or, you can order two smaller pieces, install them side-by-side and cover the 'gap' with a keystone decorative element placed in the center. Visit www.fypon.com.



GARAGE & WORKSHOP

HOT PRODUCTS



CLEVER CRATES

Pop'em up, fold'em down, Clever Crates are a smart, easy way to store, organize and transport household items. The secret is the unique lightweight and collapsible lift, pop and pack design that creates a spacious container that can be folded, stacked and stored away almost anywhere. It is a perfect tool for space-saving and efficient storage for the garage, workshop or garden, as well as being very useful on-the-go temporary containers for camping, parties, travel and more. Ranging in size from 32 liter (35-lb. capacity) to 62 liter (132-lb. capacity), they come in both open-walled and solid-wall versions and with or without handles. Clever Crates provide portability for both daily activities and in-home storage while being easily collapsible when not in use without cluttering your home or vehicle. The crates are hygienic and easy to wash. They're made from durable, reusable, sustainable and recyclable material. Available in a variety of colors, the crates sell for \$11.99 - \$19.99, depending on size. Visit clevercrates.com.

ZIP-UP CEILING

Zip-Up Ceiling is a smart alternative to drop ceiling tile systems in basements, garages and other residential and commercial spaces. The system provides a quick, easy way to finish open ceilings while saving headroom and maintaining accessibility to overhead plumbing and wiring. An economical and aesthetically pleasing alternative to traditional drop ceilings, Zip-Up Ceiling is comprised of durable interlocking PVC panels and rails and meets Class-A Fire Rating. It is impervious to water, can be cleaned with water, and is mold and mildew-resistant. The system, which provides a flat, grid-free, non-corrugated washable surface, assembles in six easy steps with



just a few components and tools. The E-shaped wall trim attaches to walls around the entire periphery. The main rail runs the length of the room and attaches to the joists. The panels, which are the visible surface of the system, zip into the rails and unzip for access and cleaning. The ceiling drops down only two inches, saving headroom. Zip-UP Ceiling comes in two finishes and colors. These are smooth and serrated, and white and beige. The panels are also paintable with latex paint. Visit www.zipupceiling.com.

DEWALT MULTI-LEVEL WORKSHOP

DeWalt introduces the new Multi-Level Workshop, a four-level, mobile workstation ideal for transporting and storing large tools, as well as organizing hand tools, accessories and other jobsite



necessities. The Multi-Level Workshop allows you to roll around the garage or roll over rough jobsite terrain. A reinforced telescopic metal pull handle offers easy maneuvering and comfortable grip. In one seamless movement users can open and extend the workshop for visible access to four levels of storage. This rolling workshop delivers 90 pounds of load capacity and 22.5 gallons of storage space. Visit www.dewalt.com.

SAFERACKS OVERHEAD STORAGE

SafeRacks is a premier provider of overhead garage storage, offering high-quality ceiling racks designed to utilize wasted space in your garage. SafeRacks offers nine different size racks, but the most popular is the 4x8. The 4x8 SafeRacks can hold up to 600 lbs. and can be installed down from your ceiling up to 45 inches. With each size storage rack, choose from three different types of drop-down lengths (12-21 in., 18-33 in., 24-45 in.) to customize the height to fit your garage and storage needs. SafeRacks are designed to be installed into wood joists in your ceiling, enabling installation almost anywhere in their garage since it does not have to attach to any side walls. SafeRacks also offers accessory hooks that attach directly to the rack so that you are able to hang items such as bikes, strollers, chairs, rakes, umbrellas and much more. Visit www.saferacks.com.

STRIKER PARKING SENSOR

The Striker Parking Sensor is designed to take the guesswork out of parking a car in tight garage



spaces. It features ultrasonic range-finding technology to accurately locate a vehicle within the desired parking constraints. The Striker Parking Sensor is conveniently equipped with a range

selector, making it easy for the user to pick different parking distances from the garage wall. The base unit can be mounted on the wall in front of the car at bumper level. Then, the signal light is mounted in a position easily viewed from the driver's seat. As the driver approaches the parking sensor, they will see a green light indicating that it is safe to proceed. As the car nears the sensor, a yellow light will illuminate as a warning to slow down. Finally, when the car is in the desired parking distance from the sensor, a red light will illuminate, signaling the driver to stop the car. It's easy to install and comes complete with all mounting hardware, instructions and warranty. Visit www.strikerhandtools.com.



GARAGE & WORKSHOP

HOT PRODUCTS



SOLID EASY LINER FROM DUCK BRAND

Now available in an assortment of neutral colors, including black to complement a variety of garage surfaces, non-adhesive Solid Easy Liner shelf liner from Duck brand is designed to make organization and surface protection easy. It features a solid, non-slip surface that keeps things from falling through, while providing an easy-to-clean area that can be wiped down with a rag or paper towel (for bigger messes, it's even machine washable). Its solid surface and gripping bottom also work great for wire shelving often found in garages. Solid Easy Liner is easy to cut and install in just about any space (and is repositionable). Visit DuckBrand.com.

KREG DIY PROJECT KIT

Kreg Tool Company launches the Kreg DIY Project Kit (Item# DIYKIT), which combines three must-have tools for creating

custom home-organizing products: the Kreg Rip-Cut, the Kreg Jig R3, and the Kreg Shelf Pin Jig. With this kit and a few simple

tools you can create high-quality projects for your home easily and economically. The DIY Project Kit makes this possible by simplifying the process of cutting, assembling and customizing projects using three proven Kreg tools. The Kreg Rip-Cut circular saw guide attaches to almost any circular saw, allowing you to cut large sheet goods easily and with more confidence than ever before. The Kreg Jig R3 makes project assembly straightforward, using just a drill and strong yet simple pocket-hole joinery. And the Kreg Shelf Pin Jig will help you create evenly-spaced, consistent holes for pins that hold adjustable shelves. The DIY Project Kit also comes with 10 free, downloadable, step-by-step project plans. Using these plans, you can quickly learn how to easily build custom organizers for every room in your home—garage, closets, basement, bedrooms, kitchen and beyond. Visit kregtool.com.



SHARPEN YOUR BITS

EASY & PRECISE

Quickly sharpen your dull bits back to the original factory standard or better, simply follow the 3 easy steps: align, sharpen, and split.

DURABLE

Drill Doctor machines are built to last. To prove it, we back each machine with a 3 year warranty.

VERSATILE

Drill Doctor can sharpen a wide variety of drill bits including: Carbide, HSS, Cobalt, Titanium, and Coated from 3/32" to 3/4"



NO MATTER YOUR BUDGET, DRILL DOCTOR HAS A MODEL FOR YOU!

HOME

The **350X** is the entry-level sharpener. It is designed for the home hobbyist looking to save money by sharpening old, dull bits.

- Create a consistent 118° point angle
- Sharpens from 3/32" to 1/2" bits

SHOP

The **XP** model is perfect for the serious do-it-yourselfer. It packs plenty of features to keep your bits sharp.

- Create a consistent 118° point angle
- Sharpens from 3/32" to 1/2" bits
- Create self-centering split points

PRO

The **500X** and **750X** are top of the line models. They offer the widest array of sharpening options including:

- Variable point angle [from 115° to 140°]
- Sharpens from 3/32" to 3/4" bits
*With optional 3/4" chuck for 500X
- Self-centering split points

**WATCH
DEMO**



DRILLDOCTOR.COM

**Drill
Doctor**
The Drill Bit Sharpener

GARAGE & WORKSHOP

HOT PRODUCTS

MODULINE

Known for exacting quality and durability, Moduline Cabinets are the premium aluminum cabinet system of homeowners and professional organizations. Made in America and made to order, each Moduline cabinet passes a rigorous inspection process before it leaves the dock. Moduline Aluminum Cabinets are not only extremely functional, they're great looking too. The high-gloss finish along with integrated sealed and anodized frames gives Moduline cabinets their unique streamlined aesthetics, which is sure to complement any space. With precision manufacturing, high-quality materials and innovative features, they're everything you want in a cabinet system. Maximize and



JACKS SMALL ENGINES
"After The Sale It's The Service That Counts!"

**1.5+ MILLION
PARTS ONLINE**



**COMMERCIAL
& BUSINESS
SAVINGS**

1-877-737-2787
JacksSmallEngines.com

transform your garage, shop or trailer into a stylish and functional workspace. Check out the company's informative website and catalogs to help you get organized with style. Trained cabinet experts will be with you before, during and after your purchase to suggest the layout and design of your space. The Moduline experts create CAD drawings so you can see what your cabinet system will look like in advance to ensure satisfaction. Visit www.modulinecabinets.com.

SUPER DUST DEPUTY XL

Single-stage dust collectors lose suction very quickly as the filter becomes clogged with dust. Using a cyclone separator in

conjunction with your collector will separate over 99 percent of dust from the air-stream prior to reaching the filter. This prevents your vacuum's filter from clogging, allowing you to work safer and longer while saving valuable time and money on replacement filters and bags. Oneida Air Systems has a new addition to the Super Dust Deputy pre-separator family. The Super Dust Deputy XL is made to handle bigger 3- to 5-hp systems. The Super Dust Deputy XL captures over 99 percent of the waste before it reaches your single-stage collector, eliminating clogging and loss of airflow. Made of static conductive plastic, it

is both lightweight and durable. Visit www.oneida-air.com. **EHT**



**You've suffered
the rest...**



**Now try
the best!**

The Bone Big-Wheeled All-American Mechanics Creepers

BoneCreeper.com



Knobs & Pulls



Hinges



Concealed Undermount



Heavy Duty Pullout Pantry



Cam Lock



Drawer Lock



Combination Lock



Chest Lock



Ball Bearing
Soft-Close Available



Heavy Duty File Drawer

Locks

Drawer Slides



Lazy Susans



Heavy Duty
Mixer Lift



Bottom Mount Wood
Waste Container



Maple Pullout Pantry
Organizers

Kitchen Organizers

A must have catalog for every do-it-yourselfer!



Star Drive Screws

Kreg Jig Pocket Hole System

Desktop Fasteners

Wood Biscuits

Fasteners



Also stocking:

- Lazy Susans
- Fasteners
- Locks
- Lighting
- and much more...

Request a **FREE** catalog!



5" Discs

Stikit Sanding Blocks



Sanding Belts



Electric Random Orbital Sander



Stikit Sheet Rolls



Sanding Sponges



Pre-Glued Wood

Abrasives

Edgebanding



Wood Glue



Silicone Sealant



Solvent & Water Based Filler



Spray Adhesive



Blades



Respirators & Masks



Bits



Safety Glasses

Adhesives & Fillers

Tools & Safety



REMODEL WITH PREFINISHED STAIR TREADS

*New Treads
in No Time—
Here's How
to Do It...*

By Matt Weber

Retro-fitting stair treads is the simplest solution for a DIY'er intent on installing hardwood treads over an existing flight of stairs. High-quality prefinished stair treads are made of solid edge-glued wood—not a veneered or engineered material—and can be used to “cap” or reface an existing tread. The primary advantage of using the prefinished stair treads is the ease of installation.

For example, the stairs shown in this article were built of lumber and covered with carpet. Once the carpet was removed, the raw lumber tread was revealed and it was downright ugly. Rather than reinstall carpet, I opted to go with hardwood stair treads to match the newly installed sapele flooring on the upper level.

By refacing the stairs with the new prefinished treads, there was no need to remove the old lumber tread. This is a particularly important advantage when dealing with “pre-fab” staircases that are built in a factory and delivered to the jobsite during construction. It is impossible to remove a tread in a pre-fab staircase without completely disassembling the stairs. However, with retro

treads, I only had to prep the staircase to accept the “caps,” and then install the treads and risers. Here's how it went.

PLAN OF ATTACK

Obviously, the first step is to assess the number of risers and treads you need, record the measurements of your existing treads and risers, select your wood species and order your materials to suit.

I ordered the treads from www.stair-treads.com, which serves as an online one-stop shop for prefinished stair treads. Stair-treads.com offers solid-wood prefinished treads and risers, in a wide variety of wood species, as well as prefinished handrails, cove molding and more. If you have a need for stair treads, the company likely has it covered, including return stair treads with mitered corners, oversized treads, open or closed treads, as well as RetroFit replacement treads, which are specially manufactured to match 3/4-inch hardwood flooring. Standard tread depth is 11-1/2 inches, and a variety of widths are available to meet your specifications.

REMODEL WITH PREFINISHED STAIR TREADS



My first step was to cut plywood reinforcement to strengthen the existing risers of my staircase.

Additionally, Stair-treads.com is not simply a distributor but also the tread manufacturer, and the company will custom-stain the treads to your flooring. In fact, I cut a few samples of the newly installed floorboards and mailed them to the company to match. I then ordered 1-inch-thick sapele treads, which arrived prefinished with a rich stain that was like a mirror image of the flooring—perfect.



I nailed plywood over the existing risers, which made the riser flush with the edge of the tread. Another option is to cut the bull nose off the tread so it is flush with the existing riser.

PREPPING THE STAIRCASE

After removing the old carpeting, vinyl or other floor covering, the first step is to eliminate any bull nose on the exposed lumber tread. One way is to cut it off. Using a handheld circular saw or jigsaw, cut the bull nose of the tread back flush with (or slightly behind) the existing riser. Use a flush-cut saw or a hammer and chisel to clean off the edges next to the skirt board.

However, like most remodeling jobs, I ran into some unforeseen challenges. The exposed risers were made from flimsy 3/8-inch plywood, which had warped over the years. To provide more solid support for the soon-to-be-installed risers, I decided to beef up the staircase by installing new, thicker plywood in place of the existing risers. In doing so, I built out the thickness of the riser so it was flush with the edge of the tread, rather than cut the tread to be flush with the riser.

Note: If you're reconstructing your staircase in any way, use screws instead of nails to avoid

squeaks. Also, keep in mind that maximum riser height should be 7-3/4 inches and minimum tread run no less than 10 inches.

Next, do a little dance on each stair tread in search of squeaks. If you find any, drive a 3-inch screw through the tread at the squeak location and solidly into the stringers. Continue tightening the framing around the squeak in this manner until the tread squeaks no more.



I make it a rule to always pre-coat any paint-grade trim before installing it. It's cleaner and easier to simply touch-up the trim once installed, rather than paint it in place.

Next, I cut the painted risers to width.



INSTALLING THE RISERS

Although made-to-order stair treads are available for purchase, I cut my own from some pre-primed MDF trim boards that were leftover from a previous job. MDF trim boards are relatively inexpensive, easy to work with, and usually

SMART, STYLISH SOLUTIONS FROM FYPON



FOR HIGH-QUALITY, LOW-MAINTENANCE POLYURETHANE
AND PVC MILLWORK, FYPON HAS YOU COVERED.

FYPON
It's How You Finish.™

800.446.3040 · www.fypon.com · info@fypon.com

REMODEL WITH PREFINISHED STAIR TREADS



The risers are fastened with construction adhesive and finish nails.

available at home-improvement stores. I pre-painted the boards with high-gloss white latex before cutting to size.

Cut the new risers to completely cover the existing risers. I suggest measuring and cutting each riser individually, rather than cutting them all to the same size. For example, the site-built staircase I was remodeling was constructed

with slight discrepancies from riser to riser and tread to tread. Since the riser sizes didn't match exactly, I had to measure and cut each independently to ensure a tight fit. (This same rule holds true when cutting the treads.)

Risers can be cut to length with a miter saw, handheld circular saw, or even a hand saw. I had to rip the risers to width, which is a

little trickier. It's possible to rip the risers with a handheld circ saw with an edge guide, but you'll get the most accurate results using a table saw with a rip fence. If you accidentally make an ugly cut, install the riser with its ugly edge down, so the thickness of the new tread hides the cut.

Use construction adhesive and finish nails to install the new risers to cover the existing ones. If you're working with thin hardwood risers, then it's a good idea to predrill the nail holes to avoid splitting the wood.



Screw down the existing treads into the stringers to eliminate any squeaks.

TREAD SIZE TO MATCH

To make installation as easy as possible, Stair-Treads.com offers the RetroFit line of replacement treads made of solid edge-glued wood and specially designed to match the thickness of 3/4-inch hardwood flooring. Each RetroFit tread has a 3/4-inch body that keeps the step height within code. With 3/4-inch flooring, installing a RetroFit stair tread actually raises the step height by exactly the same height as your new flooring. The RetroFit stair tread also uses a full 1-inch bull nose along the front edge to simulate a full 1-inch stair tread once installed.



The prefinished sapele treads from Stair-Treads.com arrived at the job-site stained to match the flooring on the upper level of the house.



Cut the treads to width using a handheld circular saw or sliding miter saw.

INSTALLING THE TREADS

Individually measure and cut each stair tread to length with a handheld circular saw or sliding miter saw. To make sure you achieve a near perfect fit, I suggest using an angle finder to make sure the treads should indeed be cut at a straight 90 degrees. If the stair construction is a little out of whack, the stringers might slightly flare or contract toward the top or bottom, in which case it may help to cut the tread at a slight angle to match.

There was no need to rip the treads to width, as the standard



Each tread should be measured and cut individually to account for any differences in size from tread to tread. Dry-fit each tread before installing.

11-1/2 inches was the perfect size to cover the tread and leave an attractive 1/2-inch bull nose over each riser. Use plenty of construction adhesive to secure each tread and fasten with finish nails.

FINISHING UP

I sealed all the nail holes on the new treads with fast-drying wood putty and, once it cured, I stained the putty to match the stairs. I used caulk to fill the nail holes on the risers. I then masked off all the seams between the white risers, white skirt board, and sapele risers with painters tape. Just caulk the seams, clean up your



Use construction adhesive to secure each tread.

REMODEL WITH PREFINISHED STAIR TREADS

caulk lines, remove the tape, and the job is done.

Prefinished stair treads spare you the trouble of procuring the wood, cutting and gluing-up your own hardwoods, and sanding and staining the treads. In other words, half the work is done for you, so installation takes only about 15 minutes per tread. For the do-it-yourself home remodeler, prefinished stair treads are a fast and efficient way to get the decorative results you want. **EHT**



Fasten each tread with finish nails and cover the nail holes with wood putty. Finish by caulking all the nail holes and seams on the risers and skirt boards.

Turn Your Old, Ugly Fireplace Into A Beautiful and Efficient Source of Heat with a Lopi Wood, Pellet, or Gas Insert



Featuring

HYBRID Fyre[®]
Technology

The World's Cleanest
Burning Wood Stoves &
Fireplace Inserts



Ask To See The

GREEN START[™]
Push Button Igniter

Start Your Fire With
The Push Of A Button!

For Your Local Dealer Go To: www.LopiStoves.com or call 1-800-654-1177



www.ProNetwork.com



Where do you stand?

ProNetwork will help you lead the way...



Marketing Tools

- Receive leads to qualified homeowners in your area
- Create personalized window remodeling presentations



Exclusive Training

- Online installation and business training
- Live on-line and on-site training



Valuable Rewards

- Earn points for training and purchases
- Use points for over 50,000 items



Why not sign up today?

Becoming a member of the Simonton ProNetwork is absolutely **FREE** and **EASY**.

Log in or join now to be entered in this month's Great Golf Give away.

See rules at www.ProNetwork.com.

Log in or sign up today at www.ProNetwork.com, provide your number to your favorite distributor to enter into EPOPS and start earning valuable points today.

BREAK ON THROUGH TO THE OTHER SIDE

By Matt Weber

Knock through a wall to build an awesome bar pass-through.

My wife and I bought our home because we saw its potential, not because we were in love with the existing design. In fact, we felt the upper level was a little claustrophobic and we wanted a more open floor plan so family members in the kitchen could easily chat with friends in the family room. When we bought the house, the kitchen and family room were completely separated by a partition wall. Well, we made short work of that wall and now enjoy a new bar pass-through that brings a more spacious feel to the house and provides two additional seats for those big family dinners. Here's how we knocked down a wall and built up a pass-through.

TEAR IT DOWN

I began the pass-through by carefully removing the baseboard along the wall. First, cut the caulk bead with a utility knife. Then, starting at the end of a baseboard run, work a pry bar behind the baseboard, pressing downward so the tongue reaches the sill plate, and pry the baseboard away from the wall. Be sure to pry against the 2x4 sill plate and not against the unsupported drywall, or your pry bar will likely break through the drywall rather than achieve any leverage. Drywall damage won't matter in the areas that you're tearing down, but will require an extra repair everywhere else. I removed the baseboard in whole pieces, and then pulled the nails and filled the holes with putty so they could be painted and reinstalled.







Make sure all power is disconnected from the wall you're about to demolish.



The first rule of thumb for wall demolition is to approach the job safely. At the breaker box, disconnect any power supply to nearby wall outlets, and use a volt detector to verify that no electricity is actively running through the wall.

I then used an electric stud finder to locate and mark the framing studs. We chose to remove only a 5-foot wide section in the middle of the wall, so we made careful note of which areas of the wall to leave undamaged.

There was nothing scientific about the first few strikes to the wall. After verifying there were no water pipes or live wires behind the drywall, I sunk a 22-ounce framing hammer into the “soft spots” between the studs and began removing the crumbling chunks of drywall.

At the two studs that bordered our tear-out area, we set aside the hammer in favor of a drywall saw, which provided a smooth, controlled cut along the studs so we'd have a reasonably straight drywall

joint for our rebuilding phase. Because drywall demolition generates a lot of dust and debris, we only employed the hammer tactic on one side of the wall. To minimize the mess, we used the drywall saw to penetrate the wallboard from the rear on the oppo-



After opening the wall, a drywall saw allows you to remove the wallboard in large sections.

site wall, which allowed us to disassemble the drywall panel in larger, more orderly sections. Be sure to razor-cut the joints at the top, where the drywall meets the ceiling, to avoid ceiling damage.

In fact, I should stress this point further ... tearing down walls is extremely messy. Dust covers everything and spreads throughout the house into seemingly impossible nooks and crannies. I highly advise wrapping plastic over everything you want to keep clean, and use some strategically placed box fans to create an outdoor draft near the work area. We did take a more laissez-faire approach in our case because we were undergoing a full-house remodel and the place was a trainwreck anyway, but be advised that wall demo calls for major cleanup.

STUD REMOVAL

Before ripping through any walls, determine if the wall you plan to penetrate or remove is a load-bearing wall. Consult a structural engineer if necessary. Load-bearing walls support the upper floors and/or the roof above. For

WINTER IS COMING.

Will you be ready?

NEW

SpeedTrace Extreme

Pre-Assembled Self-Regulating Heating Cable



***Pipe and Valve Freeze Protection in
Extreme Cold Conditions down to -40°F (-40°C)***

- *Protects Metal and Plastic Pipes and Valves from Freezing*
- *60% More Wattage Than Typical Heating Cables**
- *Durable, Industrial Grade*
- *Easy-to-Install, Plug-and-Play Design*

*Compared to 5 watts/foot rated self-regulating heating cable.

BriskHeat[®]
Corporation
Your Heating Specialist Since 1949

Visit www.SpeedTraceHeating.com
or call 1-800-848-7673 to learn more.



Cut the drywall joint so it separates from the ceiling without damage.

example, all exterior walls are load-bearing, and any wall that supports lapped joists or sits on a post is load-bearing. In most cases, removal of load-bearing walls should be left to professionals, and the job may also require the approval of a local building inspector.

Partition walls provide no structural support and are used simply to divide a large space into small spaces. If you want a larger space, as we did, removing a partition wall is a good way to create one.

The wall we removed was technically not a load-bearing wall, but for the sake of illustration I braced it as though I would have for a load-bearing situation. I did this by building a temporary support structure from 4x4 posts with a 2x cross-member at both the top and bottom, creating a temporary wall about 3 feet out from the “real” wall, which carries the weight of the upper structure while removing

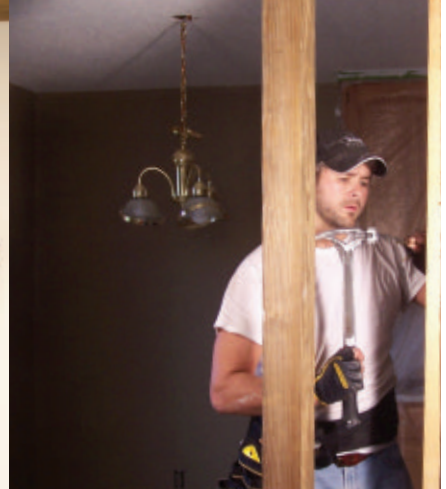
the studs. If using this method, make sure the support members are perfectly plumb and securely toe-nailed at the top and bottom, with the support spanning beyond each edge of the wall area you plan to remove and the posts positioned beneath the overhead joists. Use cardboard to protect finished floor and ceiling surfaces.

To remove the studs, it’s probably easiest to cut them in half at



Load-bearing walls require temporary support walls to carry the weight of the overhead structure.





The header was built from 2x10's and plywood.

mid-height with a circ saw and pry them up with a pry bar or clawed hammer. But if you're doing the job yourself, chances are you're the type of guy or gal who finds lumber very useful. To keep the lumber intact and reusable, take a reciprocating saw to the nails between the bottom of the stud and the floor plate. Cut the bottom first and then pull the studs free by hand.

Luckily I had no pipes to contend with, so no plumber was needed. I did, however, have to relocate some wiring for a couple of electrical outlets. The electrical wire was running vertically up the wall from the shin-high outlets to an overhead light fixture in the kitchen ceiling. I couldn't very well have the wire running up through the countertop of the bar I was building, so I had to re-route the

wire so it ran up the wall a few feet over from its current location, where it would be concealed behind the drywall. This meant disconnecting the wire, venturing into my hot, dusty attic to pull up the wire, drilling a new hole in the top plate, and feeding the wire down into the other stud bay. I did so, and for the time being, the wire dangled there in suspense ... (I'll get back to connecting the wire in a moment.)



FRAMING THE PASS-THROUGH

In general a bar pass-through is constructed just like a door or window, with a header above the opening, doubled "jack studs" that frame the opening, and shorter "cripple studs" to frame the space at the top and bottom.

First, I made the header from two pieces of 2x10 lumber with a 1/2-inch piece of plywood

I drilled a path for the electrical line through the jack studs.



I then nailed the top plate of the bar in place and installed the cripple studs flush beneath it.

sandwiched between them. (Note: Depending on the span of your opening, the header lumber can be as small as a 2x4, but I had some leftover 2x10 and that size gave me the overhead room I wanted without having to cut cripple studs at the top.) The header was cut to fit flush between the studs and against the top plate and toe-nailed in place. I then reused two of the old studs to double the two remaining studs that

book-ended the hole I had made in the wall. These are called jack studs, and I cut them to fit flush beneath the header (tightened with shims).

Next, I designed my countertop from the top surface down. I determined my desired finished height, 42 inches, marked the studs and accounted for all the materials beneath it. There are many ways to build a bar, and your design and materials will determine your

specific measurements. For the sake of example, I had to calculate for tile, mortar bed, cement board, two layers of plywood and two horizontal 2-by-4 plates to support the countertop. Working downward from the finished height, I made similar marks on the wall studs indicating the various layers of material. These markings indicated where I needed to install the support framing. I then leveled and nailed a horizontal 2x4 across the opening and used it to house the new cripple studs—roughly 36 inches—that I toe-nailed into place. The studs should be spaced no wider than 16 inches on center. Planning in advance, I placed my studs so I would have two of them in symmetrical position to install shelf supports beneath the bar.

With the studs in place, I could get back to that pesky wire ... I bored a 3/4-inch hole through the doubled jack studs and into the stud bay that held the wire. Note: Irwin's highly aggressive new self-feeding Speedbor bits make this task a snap. We then used fish tape to retrieve the wire from the hole, and then drilled wire paths through the new cripple studs to make the connections and nail the outlet boxes in place.



The jack studs were notched to accept the countertop.



Sometimes it's what you don't see
That makes a deck beautiful.



Performance,
Durability,
Easy to Install,
Versatility . . .
A Strong and Secure
Concealed Deck
Fastening System

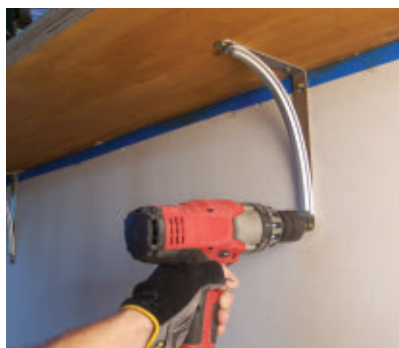


Sure Drive USA® | Conover, NC & Hayward, CA | 800-951-2222 | www.suredrive.com



I then added the countertop, made from cement board and two sheets of 3/4" plywood, and leveled it carefully.

A few 5" RSS screws from GRK Fasteners holds the bar firmly in place. www.grkfasteners.com



For a belt-and-suspenders approach, I screwed shelf supports into the cripple studs and fastened them beneath the countertop.

RECONSTRUCTION

With the framing in place the wall is structurally complete, and you can ditch the 4x4 support rig. All that's left is to make things look pretty again. I used drywall to tie the wall in with the existing style of the room, but panelized wainscoting may be an even easier option for a DIY'er.

I won't go into a long tutorial on drywall installation, but suffice it to say, it takes a lot of patience and sanding if you're not a pro at it—and I'm not. I got the job done, but it took quite a while and did generate one piece of advice I can offer: Plan your drywall installation to use as few pieces as possible, which translates into fewer joints to finish with joint compound.

With the drywall sanded primed and painted, you're ready to knock out your bar top. You have a laundry list of options, but I chose to use 18-inch travertine tiles as my bar or countertop surface. To

make this happen, I doubled the 2x4 top plate to provide plenty of meat to drive some very aggressive screws. I then built the sub-surface of the countertop with two sheets of 3/4-inch plywood laminated on top of each other with construction adhesive and deck screws, and topped with a layer of Hardibacker cement board.

To install the bar, I notched each jack stud to accept the edge of the bar and slid the slab into the notches, squaring it with a framing square and making it perfectly level with a hand level and some strategically placed cedar shims. I then anchored the bar with some 5-inch RSS screws from GRK Fasteners countersunk through the bar top and driven deep into the doubled 2x4. The RSS screws are strong enough to replace lag bolts, and they're probably overkill as far as fastening a bar, but I wanted this thing bullet-proof in case any of my nephews





www.betterwayac.com

INGRAM'S
WATER & AIR EQUIPMENT

**NOW
OFFERING
COMPLETE
SOLAR
KITS!**

Guaranteed Lowest Prices!



HEATING & AIR CONDITIONING:

Air Conditioners, Geothermal Heat Pumps, Split System Heat Pumps and more!

WATER EQUIPMENT:

Water Softeners, Water Coolers, Faucet Mount Filters and more!

AIR PURIFICATION:

Electronic Air Cleaner, Low Micron Media Filter, Humidifiers, Portable Air Units and more!

INGRAM'S OFFERS:

FRIENDLY SERVICE.

We are a friendly, family-owned business that enjoys getting to know our customers. Your concerns have our utmost attention.

LOWEST OUT THE DOOR PRICE.

We guarantee to have the lowest out the door price. This is after shipping cost, special handling fees, insurance, and etc.

FAST SHIPPING.

All HVAC shipments are easily monitored from our door to yours. We strive to save you additional money on freight cost, call us for the lowest available shipping quote.

Save Up To \$500 With
Our Industry Exclusive

PRESSPLAY™
REWARDS

Call us **1-800-360-1569**

Visit us **BetterwayAC.com**

BREAK ON THROUGH TO THE OTHER SIDE

got the bright idea to hop onto the bar as though it were a bench.

For even further support, I installed shelf brackets beneath the bar and into the cripple studs. This bar is supported from the sides (stud notches), from above (RSS screws) and from below. It isn't going anywhere.

FINAL STRETCH

Everything left in the bar pass-through project involved decorative issues. To apply the stone, I cut the tiles to size on a wet saw with a diamond blade, troweled on a mortar bed and leveled the tiles carefully. For countertop edging I routed a bull-nose on some oak and stained it to match our kitchen cabinets, mitering at the corners and fastening the trim along the perimeter of the bar with finish nails. The tile grout was color-matched to the grout that appeared throughout the kitchen. I then sealed the tile, which is highly recommended for natural stone surfaces.

I used a combination of poplar lumber and pre-milled, paint-grade wood trim to create the decorative carpentry around the pass-through. I used two different styles on each side of the pass-through: a crown-molding inspired style on the "living room" side of the bar; and fluted casing with cornice blocks on the "kitchen" side. I basically just mapped out my designs on paper and picked up the supplies at my local Lowe's hardware store.

You have total creative control of your trimwork, and it becomes one of the most fun and personalized aspects of the project. I'll limit my trim carpentry advice to this: Measure carefully and keep your reveals consistent. Caulk all seams and fill all nail holes before painting and you'll have a handsome new home focal point that you can't wait to show your next house guest. **EHT**



Finish up with some creative trim carpentry.





**CLEAN YOUR GARAGE, VEHICLES, WORKSHOP & MORE
WITH A WALL MOUNTED GARAGE VAC BY VACUMAID®**



VARIETY OF COLORS

STEEL CONSTRUCTION

30' OR 50' HOSE

RESIDENTIAL & COMMERCIAL

QUALITY TOOLS INCLUDED



MADE IN THE USA

www.THEGARAGEVAC.com

1-800-221-1862

Fix Common Garage Door Opener Problems



By Justin White

When you face a non-working garage door, you may fear an expensive repair bill. The good news for homeowners is that most garage door problems are simple fixes that may not even require a call to the repair professional. Here are some common garage door opening problems, and the solutions you can try before you call the repair professional.

GARAGE DOOR WILL NOT RESPOND TO OPENERS

Sometimes you will push the button on your remote or your wall opener and the door will not open. When this happens, you are prob-

ably dealing with a power source issue. Make sure the motor is plugged in. If it is, check the circuit breaker or the fuse running to the garage door opener. These are common sources of power failure. If the door runs via a battery, try replacing the battery and see if this fixes the problem.

If the wall switch will open the door but the remote will not, the fault is probably in the remote batteries. Change them and try again. If this still does not work, you may be out of range, so try moving closer. Also, make sure that the antenna on the motor is hanging down to receive the signal from the garage door opener. If all

else fails, try reprogramming the remote. The signal may not be getting to the door. If these steps don't work, you may need a new opener remote.

FAILURE TO CLOSE PROPERLY

Whether the door is not closing all the way or is closing and then immediately opening again, you have a security issue. You need to know that your door will close and stay closed when you ask it to. In these situations, start by ensuring that there are not any items blocking the sensors at the bottom of the garage door. If something is in the path of the garage door safety

ORGANIZE WITH *Style.*



MODULAR ALUMINUM CABINETS

PROFESSIONAL GRADE.
DESIGNER APPEARANCE.
DELIVERED AS PROMISED.

MODULINE
MODULAR ALUMINUM CABINETS

(888) 365-0895
MODULINECABINETS.COM





Lubrication prevents corrosion of metal garage doors and allows the moving components to move more quietly and smoothly with less wear from friction. Lubricate the the chain drive (or screw drive) with white lithium grease, available at any home center. You can coat overhead torsion springs or extension springs with standard WD-40.

sensors, the door will not close. This includes a spider web or any other obstruction. Also, make sure the door is not hitting anything when it comes down that could be causing it to reverse.

Sometimes if the door will not close all the way, the lights on the garage door motor will flash. The pattern of the flashes can indicate what the problem is. Check the garage door opener's manual to see what the light flashing pattern means for your particular type of door.

After making these adjustments, test the door to see if it is working properly. Sometimes you may need to fine-tune the adjustments to get the door in perfect working order.

If this does not fix the problem and the door will not close all the way, disconnect the opener and see if there is a problem when you open the door manually. Check for obstructions or problems on the door itself that are preventing this from functioning as it should.

MOTOR WILL NOT STOP RUNNING

If you are opening your garage door but find that the motor just keeps running, your limit switch may need to be adjusted. For safety reasons, trained professionals

only should make limit and force adjustments to your garage door opener. Check the manual to see if there are additional troubleshooting steps to take.

If you have checked each of these steps and still have not solved the problem, then you may be looking at a professional repair. **EHT**

Justin White is the marketing director for Garage Door Repair, LLC, Living just outside of Washington DC, Justin is extremely resourceful with resolutions on common garage door problems and has helped customers all across the country fix their garage door issues.

If the door doesn't close far enough or returns once it hits the floor, you probably need to adjust the travel setting of the door opener. Check with your manufacturer to determine the adjustment procedure. Some door openers have set screws you can adjust with a screwdriver, while other units have knobs or trip levers for adjustment.





Beautify Exterior Design with a Luxury Hardwood Look

1. Position 2. Click 3. Admire

Now there's a proven, affordable way to extend the home's hardwood flooring to the outside living area.

Deck-A-Floor is the patent-pending composite timber system that requires no screws, joints, or nails to install. The revolutionary system mimics the luxury look of exotic hardwoods right down to the timber's subtle color variations. Architects, designers, and homeowners like the rich, authentic hardwood look that's nearly impervious to sun, wind, rain, snow, temperature extremes, as well as stains, scratches and other entertaining hazards.

The 40-inch long flooring boards snap-in-place to a grid system easily configured to nearly any design requirement. Have a unique outdoor pattern in mind? No problem. It's easy to showcase flooring creativity and a stylish hardwood look with Deck-A-Floor.

- **Perfect for decks, patios, or pool surrounds**
- **Stain-proof, scratch-resistant**
- **Nearly maintenance-free – no sanding, staining, or painting**
- **Hardwood looks in Westminster gray, Spanish walnut, and Peruvian teak**
- **25-year limited warranty**

Homeowner Eric Anderson of Charlotte, N.C. says:

"Deck A Floor is perfect. Our porch has hardwood beauty without maintenance headaches."

Beautify exterior environments with the luxury look of hardwood with the durability and versatility of Deck-A-Floor. Available now exclusively through The Home Depot.

Patent Pending

NewTechWood
281-570-6450
www.newtechwood.com

DECK-A-FLOOR®

By NewTechWood

Shock Treatment

Do-It-Yourself Shock Installation Saves Owners Time and Money



By Bruce W. Smith

It wasn't to the point of needing a Dramamine patch behind the ear, but my 2002 Chevy TrailBlazer's ride and handling seemed to have become a lot more "boaty" over the past year. It wasn't unexpected: 67,000 miles, mostly over country roads and pot-hole-ridden city streets tends to hasten the wear and tear of any vehicle's suspension.

Shocks wear out about the same time as tires and at the same time-warping miniscule rate, so their demise lulls you into not even noticing they are shot until one day you suddenly realize

something is not right and needs to be fixed. Now.

Most standard shocks lose their effectiveness around 15,000 miles. The higher-end gas-filled versions, like the Bilsteins under the four corners of my TrailBlazer, are good for around 50K. After that you might as well say they are just along for the ride—as were mine. They no longer control the vehicle when a big dip in the road swallows it up, nor do they quickly steady the wobbles, bounces, and shakes after crossing the railroad tracks, or help stabilize the movement added by that trailer hooked to the hitch.

Replacing shocks on a pickup or SUV is easy. A bolt on bottom and top are all that keep them in place. But replacing struts is another story; they normally require a trip to the repair shop or dealer where special tools and trained mechanics handle what becomes an expensive half-day task.

We are going to take you step-by-step to show how you can R&R the rear shocks in half the time allowed in the flat-rate book, saving you the \$50-\$60/hour shop labor rate, paying a premium for OEM shocks, and the cost of a front-end alignment. All you need are the right tools and room to work.

When the job is done your GM SUV's ride and handling will be better than it was the day it came off the showroom floor.

A word of note about shocks: OEM/factory shocks do not always provide the best ride and handling. They can also be more expensive than "aftermarket" replacements. We know Bilstein changed the shock setup on their non-OEM shocks for this application to provide what they think is a better suspension package, and we concur.

Editor's Note: This replacement procedure is applicable to all 2002-2006 Chevy TrailBlazer, GMC Envoy, Olds Bravada, and Buick Rainier mid-size SUVs. The procedure may differ for other makes and models of vehicle. Refer to the manufacturer's recommendations.

SIT BACK AND ENJOY THE SNOW!



- Bolt-on model specific 2" front receiver mount included
- Rust-proof anodized aluminum blade never needs repainting
- Heavy duty frame allows blade to move up and down automatically with the terrain
- Simply pull one pin and remove to store
- Fits trucks, SUVs, ATVs, UTVs and more

**\$50 off the purchase of
a SNOWSPORT® HD Plow!**

Now thru 12/31/14 only.

Use Promo Code SSHOWT050

www.snowsportplow.com

Tested. Trusted. Guaranteed.

STEP-BY-STEP
(REAR SHOCKS)



Lift the vehicle and safely secure it. We used a hoist for easiest access, but a floor jack and good jackstands can also be employed. Remove the rear wheels.



We placed an OTC 2018A 2-Ton Tripod Stand under the axle housing to support the side each shock is being R&R'd. (A floor jack will work the same way for those using jackstands instead of a hoist). Use an 18mm socket and box-end wrench to remove both the upper and lower shock mounting bolts.



Apply just enough lift on the tripod stand (or floor jack) to allow both the upper and lower shock bolts to slide out freely. The bottom mount might require a little nudge from a long screwdriver or small pry bar to slide out of the mounting bracket.



Bilstein is a big shock supplier to GM, including those found on the mid-size SUV's such as the TrailBlazer, Envoy and Bravada. But Bilstein's own replacement shocks have different valving and better overall ride control than the factory-spec shocks. So we used Bilstein's shocks instead of the GM replacement versions.



Before installing the new Bilsteins, note that the top mounting bracket utilizes a special "J"-clip/nut on the inward side. This clip can and may slip down just a fraction when you remove the shock. When the new shock is installed you will have to use your finger or thumb to hold the clip up so it aligns with the mounting bolt.



Install both the upper and lower bolts (supplied with the new shocks) and tighten.



Back off the pressure on the floorjack or tripod stand. Reposition the stand or floor jack to the opposite side and repeat the same steps.



After the new shocks are in place, dab a little Anti-Seize on each wheel stud. This ensures the lug nuts will be easy to remove the next go 'round.

THIS IS PAINT-SPRAYING TECHNOLOGY SO ADVANCED, YOUR BACKYARD FENCE WON'T KNOW WHAT HIT IT.



Powerful X-Boost Turbine™ provides maximum control with full coverage.

Revolutionary iSpray® technology sprays unthinned paint.

Quick-change nozzle allows you to easily switch coatings and colors.



INTRODUCING THE REVOLUTIONARY NEW ALL-PURPOSE FLEXiO SPRAYER.

The Wagner FLEXiO™ Sprayer delivers a smooth, professional coat to almost any surface, from garage doors to bathroom walls, from fences to living room ceilings. You can spray almost any paint or stain, including unthinned latex, with enough control for detail work. Say goodbye to old-fashioned brushes and rollers. It's time for a smarter way to paint.

View a video at WagnerFlexio.com



Revolutionary iSpray technology
sprays all coatings
including unthinned paint.

PAINT SMART.

WAGNER



SPECIAL THANKS

Karl Hagar
Hagar's Auto Repair
228.868.7187

GearWrench
gearwrench.com
800.688.8949

Bilstein USA
www.bilstein.com
858-386-5900

Bolt the wheels back on, torque the lugnuts to the specs found in the owner's manual, and check the tire air pressure to make sure they are at the pressure indicated on the vehicle's door placard. That's it. Total time from start to finish: 30 minutes--tops. **EHT**

SAWSTOP MARKS 10TH ANNIVERSARY WITH UNPRECEDENTED OFFER

SawStop, LLC, a world leader in table saw safety, is celebrating 10 years of designing and manufacturing the world's safest table saws. To commemorate the anniversary, between October 1 and December 31, 2014, in the United States and Canada each customer who purchases a new Industrial Cabinet Saw will receive over \$200 in free essentials (2 free SawStop Titanium Blades and 1 free SawStop Brake Cartridge).

This is the first time SawStop has offered a promotion on the Industrial Cabinet Saw. "The saw has been number one in North America for over ten years because of its safety and unparalleled quality," says Vice-President of Marketing, Matt Howard. "Today and until the end of the year, the value is better than ever."

Each SawStop saw stops the spinning blade on contact with skin. The company's saws are designed to minimize saw-related injuries and the costs associated with them. SawStop is North America's #1 cabinet saw.

According to Mr. Howard, the reason for the promotion is simple. "We only turn ten once. To celebrate, we are offering this promotion and giving all those people who have been waiting for just the right time a good reason to join our family. Making the purchase now is better for their fingers, their livelihood and their peace of mind."

This promotion expires on December 31st, 2014. Promotion details are available at sawstop.com/10. The Industrial Cabinet Saw is available through authorized dealers both in stores and online. Find your retailer at sawstop.com.



Aerosol Spraying Made Easier!

INTRODUCING

CAN1
GUN1
Spray Can Tool


NRHA
PACKAGING AND
MERCHANDISING
AWARDS
Silver Award Winner

Spray Paints • Lubricants • Adhesives & More



Patent Pending - U.S. Design Pat. # D592,953

EXCLUSIVE FEATURES:

- ▶ **E-Z Pull FullGrip™ Trigger**
- ▶ **Up To 8X Easier To Spray***
- ▶ **Easy To Use With Gloves**
- ▶ **Fits ALL Spray Cans!** ▶ **Reusable**
- ▶ **Made In USA** ▶ **Recycled Plastic**
- ▶ **Suggested List \$3.99 ea.**



**BUY
WITH
TOTAL
CONFIDENCE**

Avail. At: Ace Hardware • SKU# 1390657
Lee Valley Tools • P.N.# 27K0690
Tractor Supply • SKU# 1038713

Call Now
800.743.0115

up to
**8X EASIER
TO SPRAY**

*than other products in this category.



©2010 SafeWorld™ Int'l., Inc.

info@cangun1.com

cangun1.com